

# Oracle DB to Azure

Customer Account Logo

Presented by:

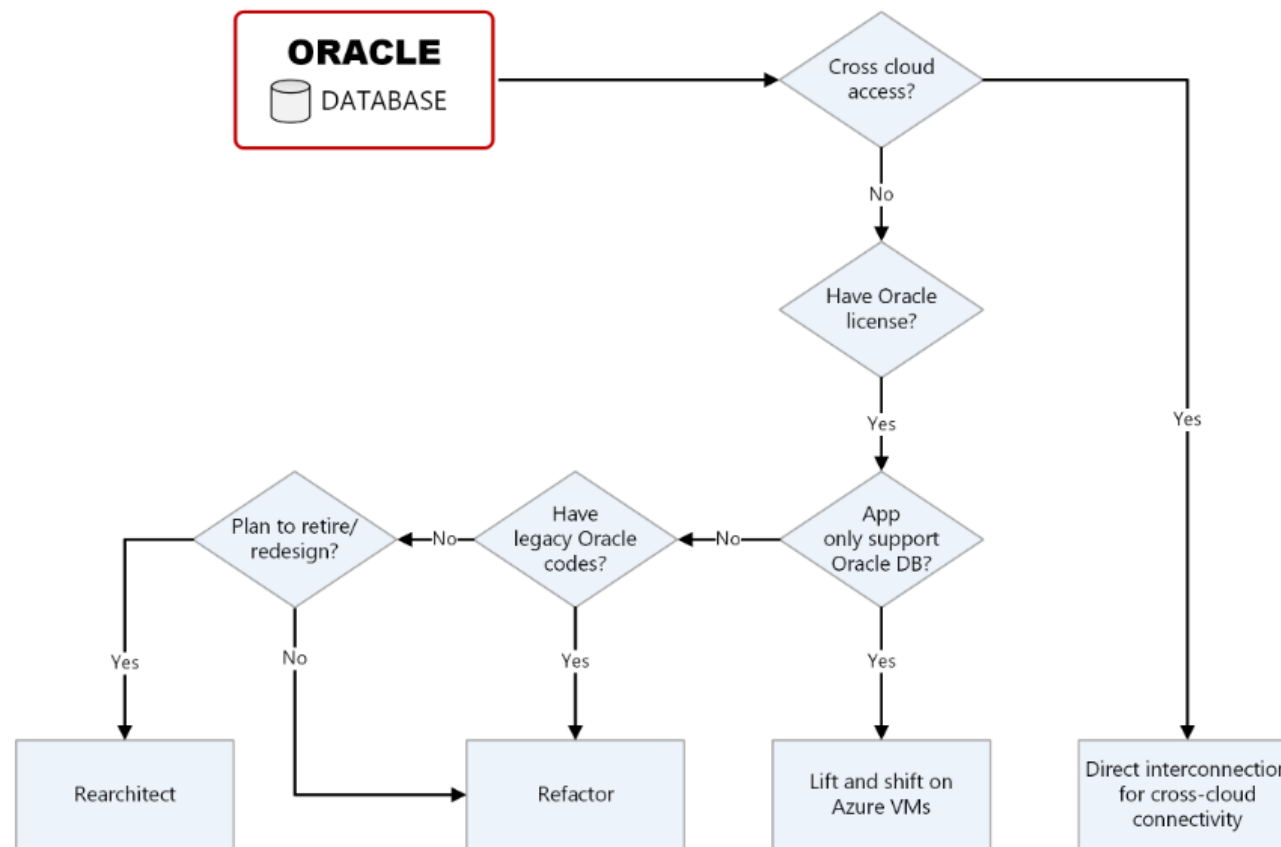
Date:

# Why move off an Oracle database?

- **Cost:** In addition to Oracle license costs, using Oracle databases incurs additional costs for features like partitioning and high availability, and expenses can add up quickly. Open-source Postgres is free to install and use.
- **Flexibility:** For instance Postgres has open-source licensing and is easily available from public cloud providers, including Azure or AWS. With Postgres, you're not at risk of vendor lock-in.
- **Customizability:** Because Postgres is open-source, there are countless extensions and add-ons that can improve database performance markedly, and many of them are free to use. With Oracle, similar features quickly add up in cost.

# What is the best way to bring you Oracle Database to Azure?

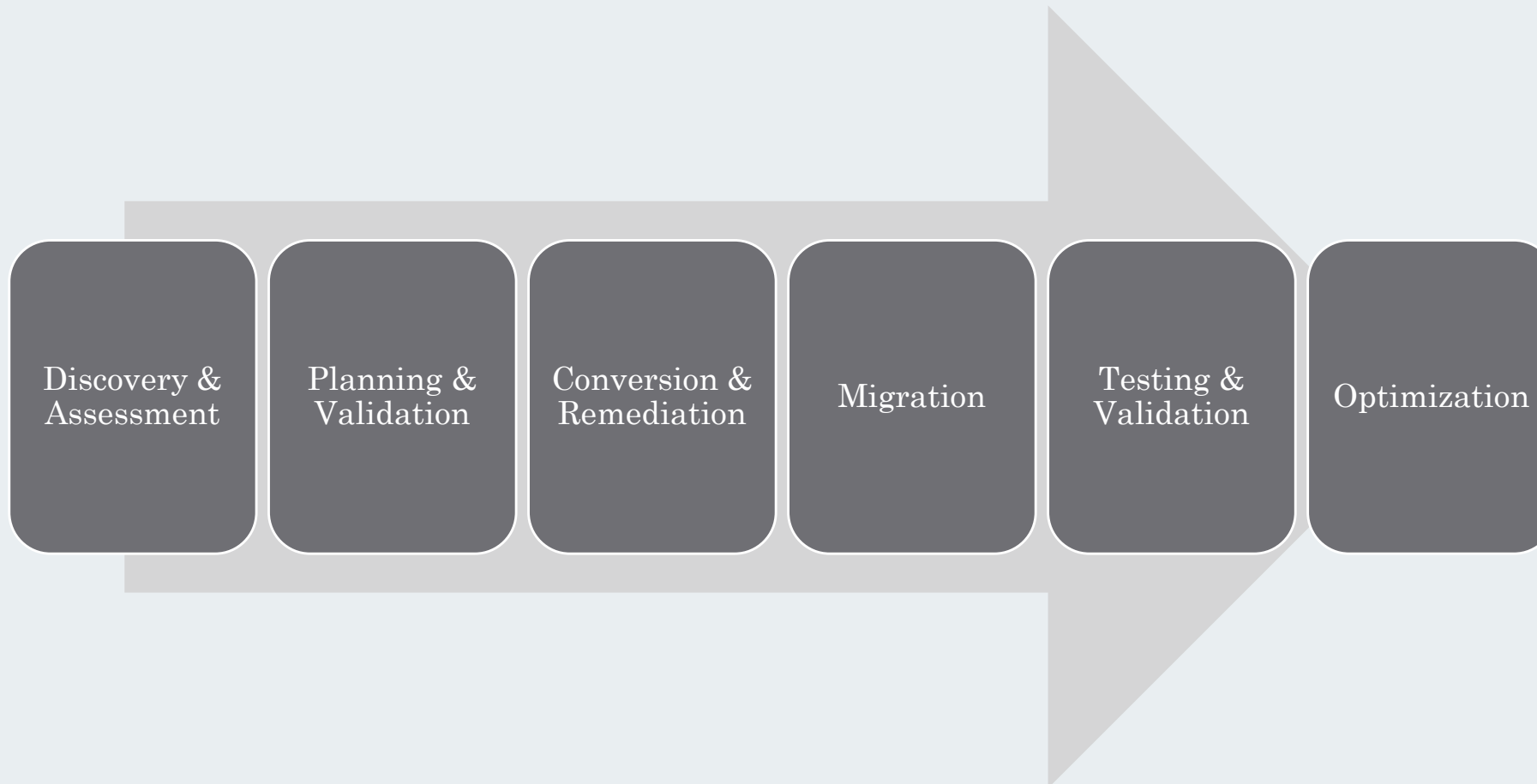
Whatever your Decision Mazzy Technologies has you covered!



What you do next depends on where you wind up on the decision tree:

- **Cross-cloud connectivity:** If you already use Oracle Cloud Infrastructure (OCI), the easy migration path for you is direct interconnection between Azure and OCI.
- **Lift and shift on Azure VMs:** You can deploy your Oracle databases in Azure based on a "bring your own license" model.
- **Refactor:** You have legacy Oracle code and you prefer using an Azure Managed Service.
- **Rearchitect:** If you're planning to retire your old code and redesign your architecture, Azure SQL Database Managed Instance is a good option.

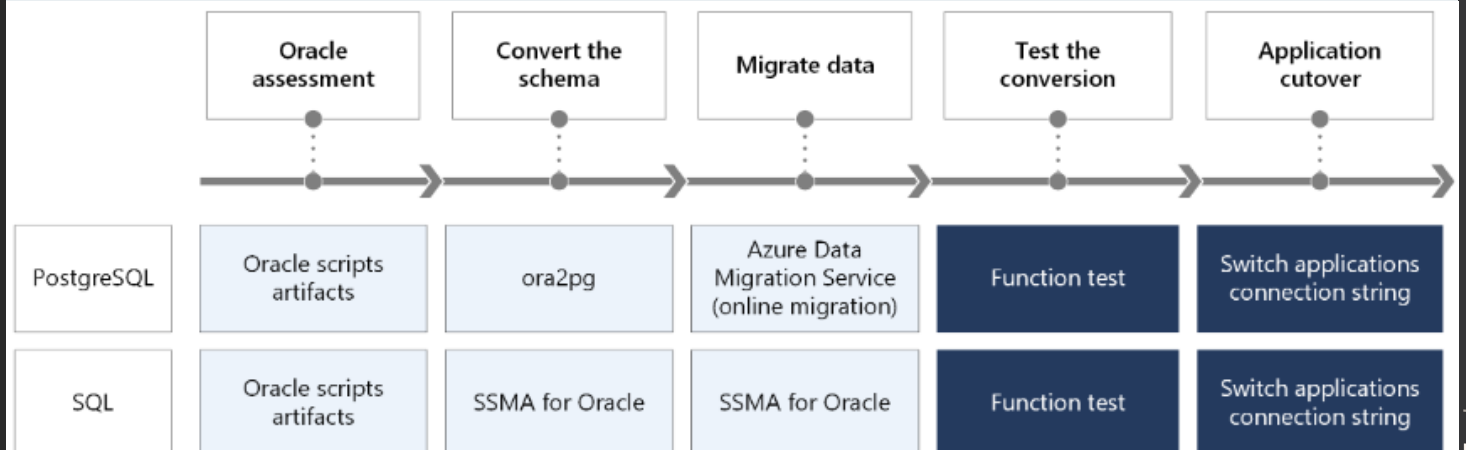
# Oracle DB Migration Process to Azure



This flow chart shows you the steps to move an Oracle database to either a PostgreSQL or a SQL database in Azure. The steps and the details are similar for both migration paths.

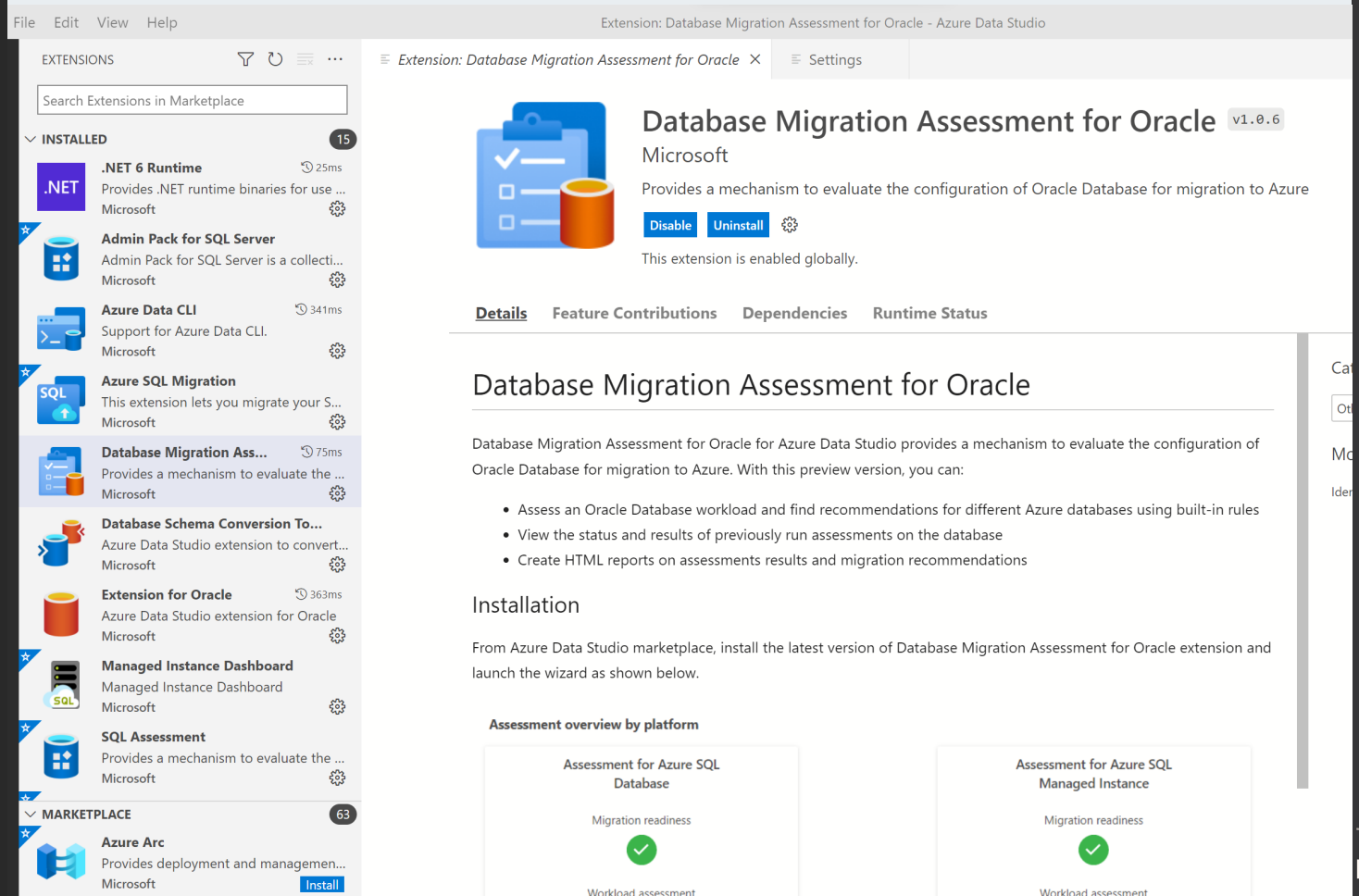
# Workflow

1. Use Oracle script artifacts to evaluate Oracle database.
2. Schema conversion is different for both database types:
  - PostgreSQL: Use ora2pg to convert your Oracle schema.
  - SQL: Use SQL Server Migration Assistant (SSMA) to convert your Oracle schema.
3. Data migration is different for both database types:
  - PostgreSQL: Use Azure Data Migration Service to migrate your Oracle data.
  - SQL: Use SSMA to migrate your Oracle data.
4. Test the conversion using functional tests.
5. Switch the application's connection strings to complete the application cutover.



# Run free Assessment Tools based on Decision Tree

**Database Migration Assessment for Oracle extension in Azure Data Studio:** for Oracle to SQL pre-assessment and workload categorization. If you are in early phase of Oracle to SQL migration and would need to do a high level workload assessment , interested in sizing Azure SQL target for the Oracle workload or understand feature migration parity, try the new extension.



The screenshot shows the Azure Data Studio interface with the 'Database Migration Assessment for Oracle' extension selected in the left-hand 'EXTENSIONS' pane. The main window displays the extension's details, including its icon, name, version (v1.0.6), and publisher (Microsoft). Below the details, there are tabs for 'Details', 'Feature Contributions', 'Dependencies', and 'Runtime Status'. The 'Details' tab is active, showing a description of the extension and a list of features. At the bottom, there is an 'Assessment overview by platform' section with two cards: 'Assessment for Azure SQL Database' and 'Assessment for Azure SQL Managed Instance'. Both cards show 'Migration readiness' with a green checkmark and 'Workload assessment'.

**EXTENSIONS**

Search Extensions in Marketplace

**INSTALLED** (15)

- .NET 6 Runtime** (25ms) - Provides .NET runtime binaries for use ... Microsoft
- Admin Pack for SQL Server** - Admin Pack for SQL Server is a collecti... Microsoft
- Azure Data CLI** (341ms) - Support for Azure Data CLI. Microsoft
- Azure SQL Migration** - This extension lets you migrate your S... Microsoft
- Database Migration Ass...** (75ms) - Provides a mechanism to evaluate the ... Microsoft
- Database Schema Conversion To...** - Azure Data Studio extension to convert... Microsoft
- Extension for Oracle** (363ms) - Azure Data Studio extension for Oracle Microsoft
- Managed Instance Dashboard** - Managed Instance Dashboard Microsoft
- SQL Assessment** - Provides a mechanism to evaluate the ... Microsoft

**MARKETPLACE** (63)

- Azure Arc** - Provides deployment and managemen... Microsoft **Install**

**Database Migration Assessment for Oracle** v1.0.6  
Microsoft

Provides a mechanism to evaluate the configuration of Oracle Database for migration to Azure

**Disable** **Uninstall**

This extension is enabled globally.

**Details** **Feature Contributions** **Dependencies** **Runtime Status**

## Database Migration Assessment for Oracle



Database Migration Assessment for Oracle for Azure Data Studio provides a mechanism to evaluate the configuration of Oracle Database for migration to Azure. With this preview version, you can:

- Assess an Oracle Database workload and find recommendations for different Azure databases using built-in rules
- View the status and results of previously run assessments on the database
- Create HTML reports on assessments results and migration recommendations

### Installation

From Azure Data Studio marketplace, install the latest version of Database Migration Assessment for Oracle extension and launch the wizard as shown below.

#### Assessment overview by platform

Assessment for Azure SQL Database	Assessment for Azure SQL Managed Instance
Migration readiness	Migration readiness
	
Workload assessment	Workload assessment

# Free Data Migration Tools

- Snapshot
- Ora2pg
- Others (Full convert, Ispirer)
- Snapshot - Parallel in chunks
- Schema Tables
- Ora2pg, ora\_migrator
- EDB Migration Toolkit
- Large table in sets
- EDB dblink\_ora module
- Oracle FDW(ora\_fdw)
- Change Data Capture
- EDB Replication Server
- Other tools (Oracle GG, DBConvert)