

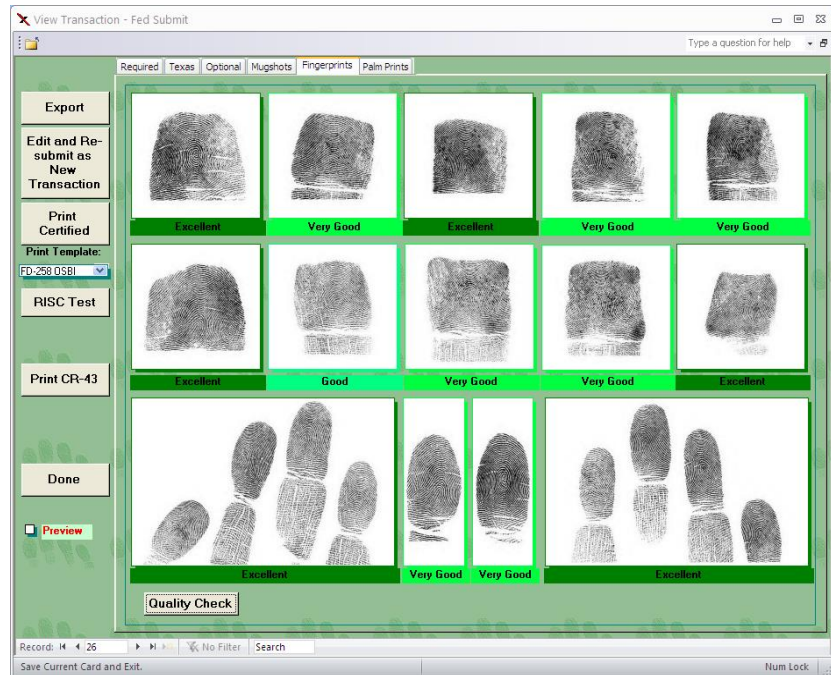
Fed Submit™ (Criminal)

Overview

Mentalix's Fed Submit (Criminal) product is used by law enforcement agencies that submit criminal fingerprint cards and arrest records to outside organizations such as the FBI and/or state agencies. Submitting electronically typically allows booking personnel to verify a suspect's identity within minutes – before having to release the suspect. Fed Submit's adaptability, scalability and affordability enable even very small law enforcement agencies to obtain an electronic fingerprint submission system.

Benefits

- Reduces receipt of results from months (when cards are mailed to outside agency) to minutes.
- Permits a choice between complete solutions or individual components.
- Can be customized to meet a state's special requirements – for example, Fed Submit (TX) is tailored for submitting to Texas DPS and includes additional, state-specific features such as encrypted Internet submission. Contact Mentalix to check availability for your state.
- Improves security with local live scan fingerprint-based searches, which are more reliable than name searches. During booking, you can search for matches to existing records; upon release, you can confirm that the correct inmate is being released.



Fed Submit (Criminal) allows you to perform a quality check on the fingerprint images prior to submitting transactions. The software highlights the print areas in colors to indicate whether the fingerprints should be rolled again to avoid rejection due to poor image quality by the destination agency.

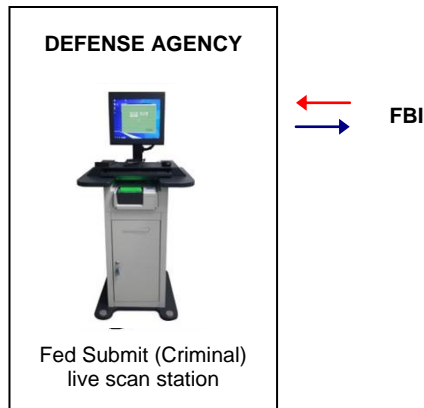
Features

- FBI-certified live scan & card scan support
- Fingerprint & palm print capture available
- 500 ppi FBI certification
- FBI-certified WSQ Version 3.1 compression
- EBTS formatting
- Fingerprint quality check
- Fingerprint sequence check (with live scan)
- FBI-certified card printing on blank card stock with CardPrint add-on & supported printer
- Stores 70,000+ transactions
- Full text search capability
- Transaction reports
- Customized data entry & field checks specific to criminal & applicant cards
- Supports submission of transactions via SMTP using customer-supplied leased line, dial-up or VPN
- Fingerprint-based matching capability within local database for searches or inmate release verification
- Photo/mug shot capture (with add-on) **facial recognition**, quality checks, and import
- Integration with local AFIS matching systems & JMS/booking systems

Flexibility

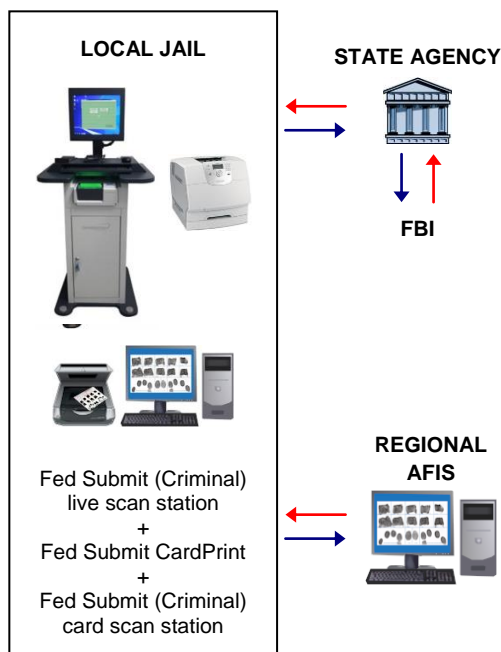
With options for add-ons and multiple stations, Fed Submit (Criminal) can accommodate a variety of needs. Typical configuration examples appear below.

Example 1: Send directly to FBI



Example 2: Send to state agency

This configuration uses live scan for adult booking and card scan for processing juveniles; both send electronic fingerprints to the state agency and to a regional AFIS. Fed Submit CardPrint is used to print certified cards for civilian applicants.



Fed Submit Specifications

Minimum Requirements

Computer

- Mid- to high-end range Intel (Core i5/i7 2.5+ GHz) or similar AMD processor, 8+ GB memory
- PCI-Express video card with 512 MB or more video RAM, capable of 1280 x 1024 resolution
- For desktop PC: 23-inch or larger LCD flat-panel monitor; must be SXGA (Super Extended Graphics Array) capable or better
- For notebook: 15-inch or larger LCD flat-panel display with SXGA or WSXGA capability
- Microsoft SQL Server 2014 Express
- Microsoft Windows 7
- Adobe Acrobat Reader 9 or later
- For remote support: Installed LogMeIn client
- UPS power backup system (not required for notebook)

Connectivity

- TCP/IP network connection
- For live scan: USB 2.0 or 3.0 port and cable.
- For card scan: USB 2.0 port and cable

Live Scan

Supported live scanner (connects via USB 2.0 or FireWire):

- Fed Submit L SCAN Guardian (USB 2.0 only)
- Fed Submit L SCAN 500 (with palm print capture)
- Fed Submit L SCAN 1000 (with palm print capture)

Card Scan

Supported flatbed card scanner (connects via USB):

- Epson Perfection V800 (PHOTO or PRO)

Card Printing

Supported printer with USB 2.0 (local) or TCP/IP LAN (network):

- Lexmark MS810dtn

Maintenance & Installation Services

Software Maintenance

Phone/e-mail/remote support (weekdays 8am-5pm Central Time, excluding holidays) for Fed Submit software, plus maintenance releases (corrections & updates)

24x7 Support Registration

Access to 24x7 per-incident support per site. Per-incident pricing is \$100/first 15 minutes + \$50/each additional 15-minute increment and only applies to after-hours support.

Live Scan Hardware Maintenance

Depot repair/replacement of live scanner for problems that arise during normal, wear-and-tear use of equipment

Installation & Training

On-site system setup and training by Mentalix

Contracts

GSA Schedule 84

MAS Contract # GS-07F-0014V



Mentalix, Inc.

1255 W. 15th Street, Suite 370, Plano, Texas 75075 USA

Telephone: (972) 423-9377 • Facsimile: (972) 423-1145

E-mail: info@mentalix.com • www.mentalix.com

0116

Copyright © 2015 Mentalix, Inc. Mentalix and Fed Submit are trademarks or registered trademarks of Mentalix, Inc. Windows is a trademark of Microsoft Corp. in the U.S. and/or other countries. EPSON Perfection is a trademark of Epson America, Inc. Adobe and Acrobat Reader are either trademarks or registered trademarks of Adobe Systems Incorporated in the U.S. and/or other countries. All other products and brand names are trademarks or registered trademarks of their respective companies; Mentalix disclaims any and all rights in these marks. Specifications subject to change without notice.