

Digital transformation of strategic processes

ANALITICA.

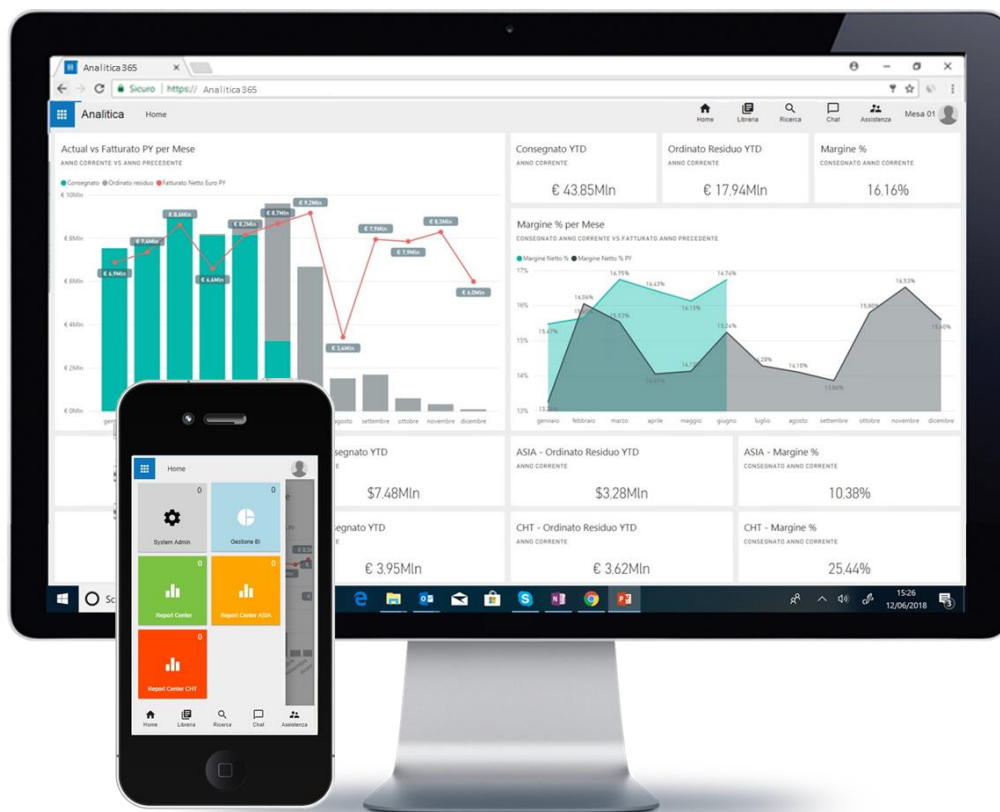
planning & consolidation technology by MESA

A new way of working for
the finance team:
collaborative, proactive,
comfortable.

ANALITICA.

A new way of working for the finance team:
collaborative, proactive, comfortable.

Management Control needs new solutions, analysis models, process logics and special tools in order to obtain quick specific support. Analitica is the solution to manage complexity, to optimize closing and planning processes and to reduce reporting times.



Our technology allows you to modify the information system integrated data through simple but safe and structured **Excel interfaces**, in addition it makes users' collaboration social by phasing out the use of e-mails through **automated workflows** which are **integrated into the organizational structure**.

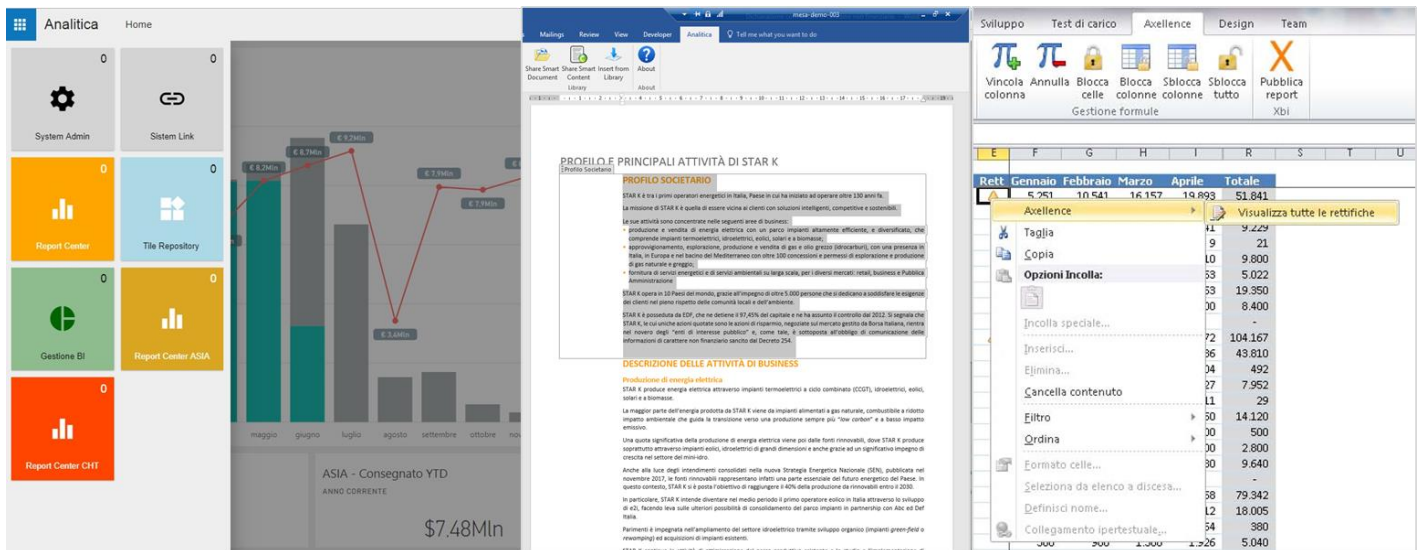
Analitica allows you to **manage workflow processes** with an authorization model operating both on a single-feature level and on the company level. Analitica also allows you to manage authorizations in an international context and in a distributed system.

Natively integrated into **Microsoft Power BI**, it allows even business users to quickly create navigable and dynamic dashboards.

Enhance what you already know, do not let your know-how go to waste!

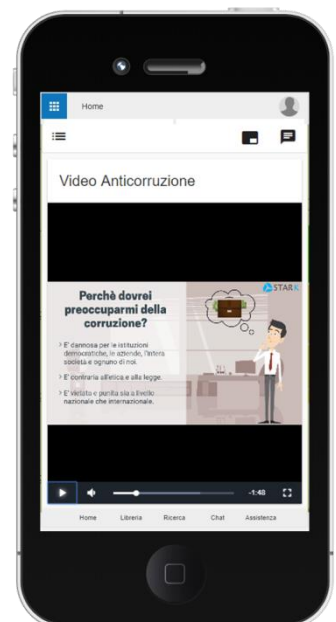
The right technology for any business user

Analitica allows any Business User to interact with the best-known interface, thanks to its integration with Microsoft technologies. For instance, functional managers can work directly on the evolved portal, while those who implement operational changes can use both the portal and Word and Excel centralized interfaces, in order to keep the information under control.



Managing and sharing documents in line with user experience

Thanks to Analitica, any type of file (e.g. videos, presentations and other documents with metadata) can be shared within the company population and potentially with outside partners. It is also possible to share documents with users, assign a task related to them (e.g. «view a video» or «read a document») and keep track of its progress on the management dashboard.



Innovation means accessible data and information

Dashboard and dynamic KPI: the key numbers for strategic decisions

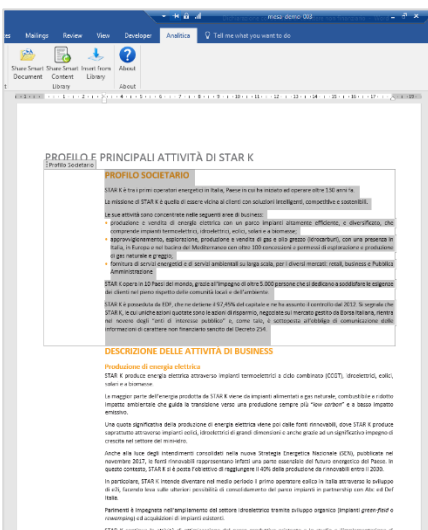
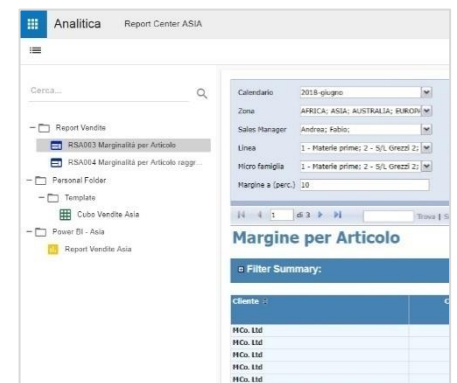
The integration of economic and financial models with the powerful engine of Microsoft Power Bi allows users to effectively and efficiently monitor the company's indicators, easily moving from overview to detail.

Thanks to the new functions of Analitica, you can share the views also with outside partners of your choice (e.g. your clients or your suppliers)!



Report Center, views and accessibility

Thanks to Report Center, you can activate different views and accesses to reports. Each user can access a «corporate» section, with the reports shared within the company, and a «personal folder» section, where they can add personal reports and consider whether to share them with other users – everything in a simple and quick way.



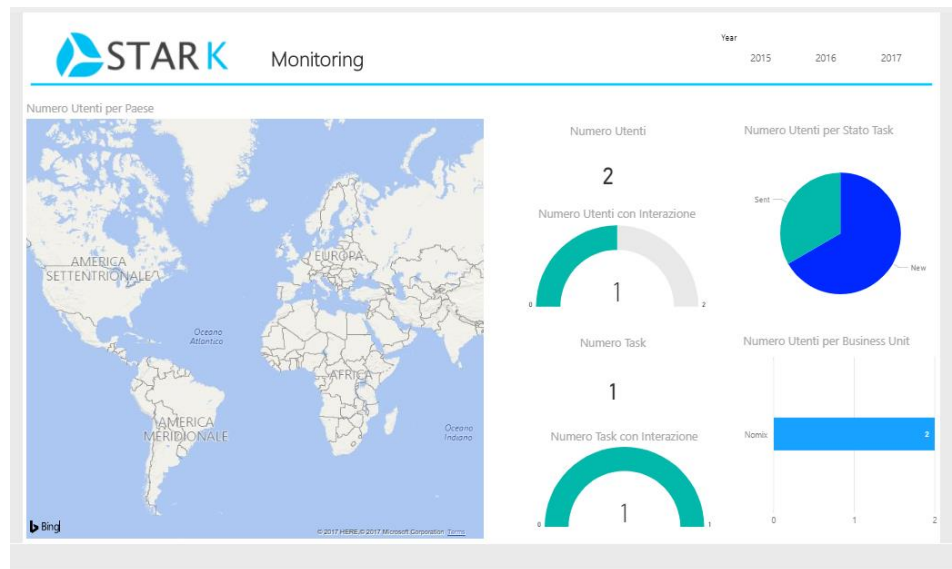
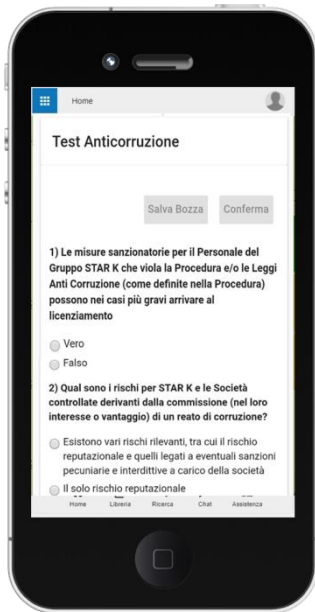
Smart Disclosure: the right information at the right time

The Smart Disclosure developed on Microsoft Word guarantees full support on the "Disclosure" process and makes it more accurate, efficient and interactive through the possibility of managing the whole closing and disclosure process for the documents required by the regulatory system in one application environment, integrated with the FSCP processes.

Immediate collaboration and interaction

Interactive surveys

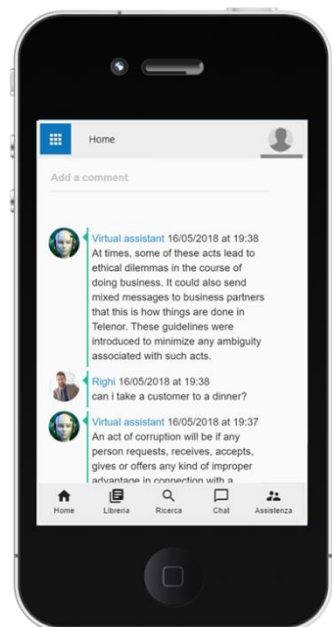
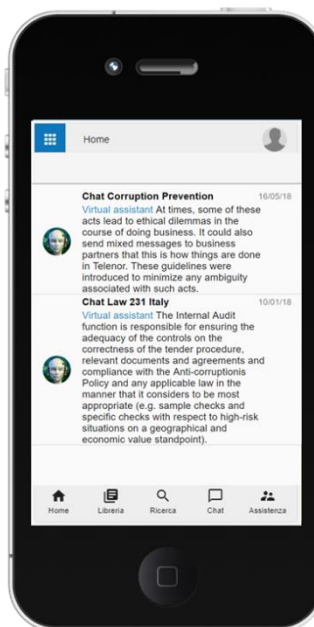
With Analitica it is possible to create and spread fully customizable surveys both within the company employees and to outside partners. Surveys can be filled out by users from both desktop computer and mobile. The data and information coming from the survey can be viewed in real time in the custom dashboards. In addition, Analitica allows you to collect any type of data directly from the portal.



Full user assistance and support at any time

Analitica guarantees full user support through a Virtual Assistant based on a complex cutting-edge Artificial Intelligence Interface.

In addition, an individual and group chat function is available to share or ask for direct assistance to function managers.



Analitica

Some applications

Analitica can be tailored on the client's needs, or it can be purchased in **pre-configured solutions** oriented towards simplification and control process management.

Budget & forecast

The Budget and Forecast module of Analitica enables you to create dynamic and forecasting models in a unique ambient thanks to the engine for managing collaborative and structured processes.

Financial Planning

The Financial Planning module of Analitica allows gathering all the data within one single spreadsheet, both with final data from the company's transactional systems and from the budget projection data.

Fast closing

Analitica allows you to control the Fast Closing process by making it more efficient, to close the accounting cycles and the company books faster while maintaining the integrity of the data and the account balance.

Consolidated financial statement

Analitica allows you to create multidimensional Company and Statutory Consolidated Financial Statements which can be queried in real time, with the possibility to query by single companies and by consolidation entries.

Smart Disclosure

A smart approach to disclosure that allows you to collaborate, share and reuse your information without losing time, providing you a complete control over your data by connecting directly to your company's internal data sources.

IFRS 16

This application allows you to manage the transition to the IFRS 16 standard, rapidly adapting to new standard. Data management, calculations, reporting and disclosure, always in compliance with IFRS principles. Everything integrated into the consolidated modules or into the systems operating within the company.

Order Management

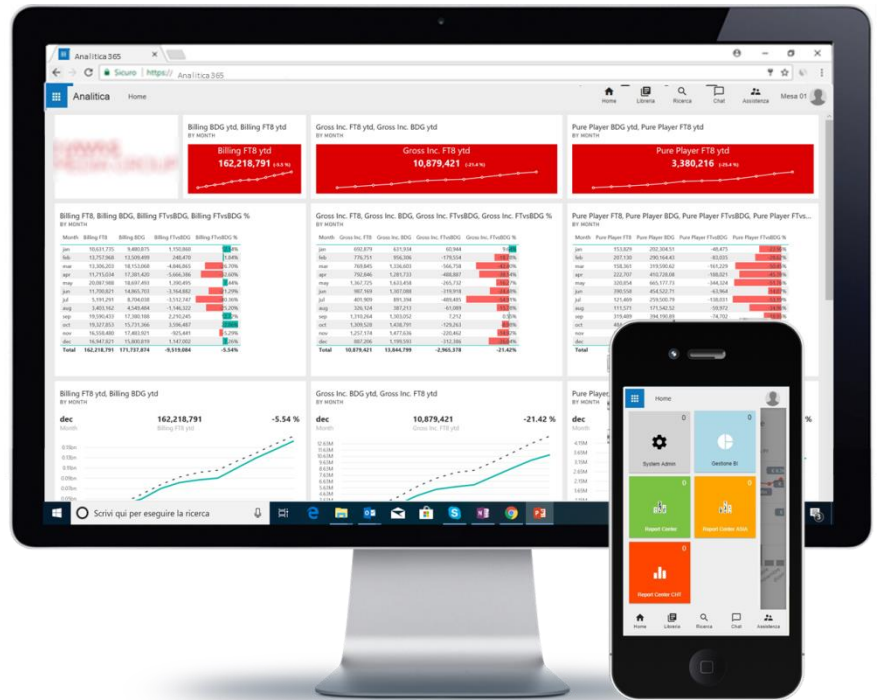
This application quickly allows users to implement an efficient and effective control system by making full use of the already existing data in the management software. Costs control, estimate at completion and activity process management.

APPLICATIONS

Budgeting and Forecasting

This application can structure **dynamic forecasting models** within a single environment, thanks to the possibility of managing **collaborative and structured** processes.

The App leads you through the Budgeting and Forecasting management process up to the creation of **reports and dashboards** to run deviation analysis and performance measurements, and to identify remedial actions.



Features:

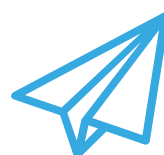
- Collaborative workflows and distributed user interfaces to manage workflow
- Simple and easily-operated front end, thanks to Excel interfaces that anyone can easily use
- Integrated management of Budgeting and Forecasting processes
- Dynamic reporting that, when integrated with the «Fast Closing» App, performs deviation analysis
- Full integrability with any I.T. system already in use within the company



Unified
solution



Time reduction



Reliability



Efficiency

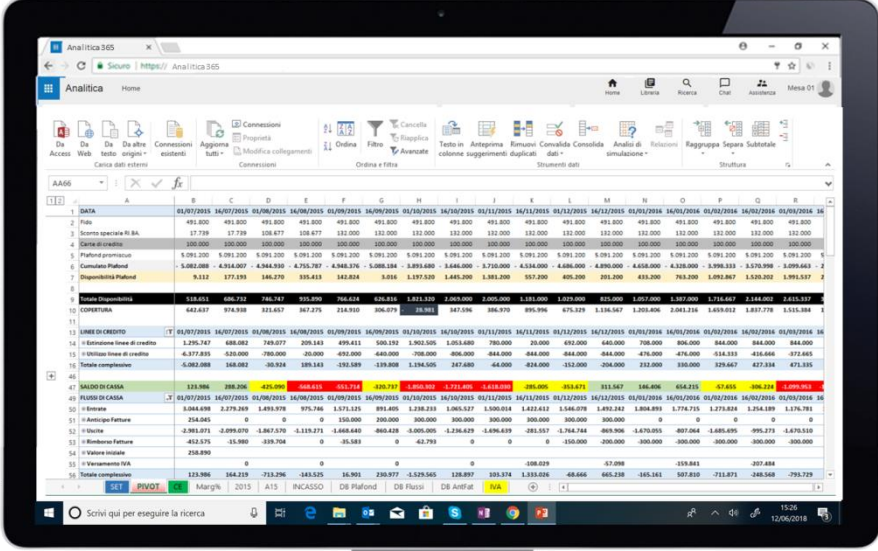
APPLICATIONS

Financial planning

This application is capable of defining **multiple custom variables** (e.g. increase in turnover of x%, reduction of variable costs, etc.) and to **estimate their financial impacts**.

The **forecasting model** is based on **modulated** historical data analysis.

It is possible to collect all the final data in a single **interface**.



	01/07/2015	16/07/2015	01/08/2015	16/08/2015	01/09/2015	16/09/2015	01/10/2015	16/10/2015	01/11/2015	16/11/2015	01/12/2015	16/12/2015	01/01/2016	16/01/2016	01/02/2016	16/02/2016	01/03/2016
1 Fidej	491.800	491.800	491.800	491.800	491.800	491.800	491.800	491.800	491.800	491.800	491.800	491.800	491.800	491.800	491.800	491.800	491.800
2 Spese operative RI BA	17.739	17.739	177.877	177.877	181.000	181.000	181.000	181.000	181.000	181.000	181.000	181.000	181.000	181.000	181.000	181.000	181.000
3 Bilancio di esercizio	300.000	300.000	300.000	300.000	300.000	300.000	300.000	300.000	300.000	300.000	300.000	300.000	300.000	300.000	300.000	300.000	300.000
4																	
5																	
6																	
7																	
8																	
9																	
10																	
11																	
12																	
13																	
14																	
15																	
16																	
17																	
18																	
19																	
20																	
21																	
22																	
23																	
24																	
25																	
26																	
27																	
28																	
29																	
30																	
31																	
32																	
33																	
34																	
35																	
36																	
37																	
38																	
39																	
40																	
41																	
42																	
43																	
44																	
45																	
46																	
47																	
48																	
49																	
50																	
51																	
52																	
53																	
54																	
55																	
56																	
57																	
58																	
59																	
60																	
61																	
62																	
63																	
64																	
65																	
66																	
67																	
68																	
69																	
70																	
71																	
72																	
73																	
74																	
75																	
76																	
77																	
78																	
79																	
80																	
81																	
82																	
83																	
84																	
85																	
86																	
87																	
88																	
89																	
90																	
91																	
92																	
93																	
94																	
95																	
96																	
97																	
98																	
99																	
100																	

Features:

- Custom networks to make everything easily reconcilable with the profit and loss statement
- User-friendly dashboard that displays the prospects of financial flows, according to the company's needs
- Guaranteed univocal data
- Total security thanks to user profiling, with the possibility to customize the authorizations for reading and writing of documents
- Flexibility thanks to the possibility of creating dynamic custom models



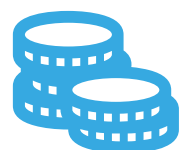
Minimize the unexpected



Improve the negotiation with banks



Development and costs

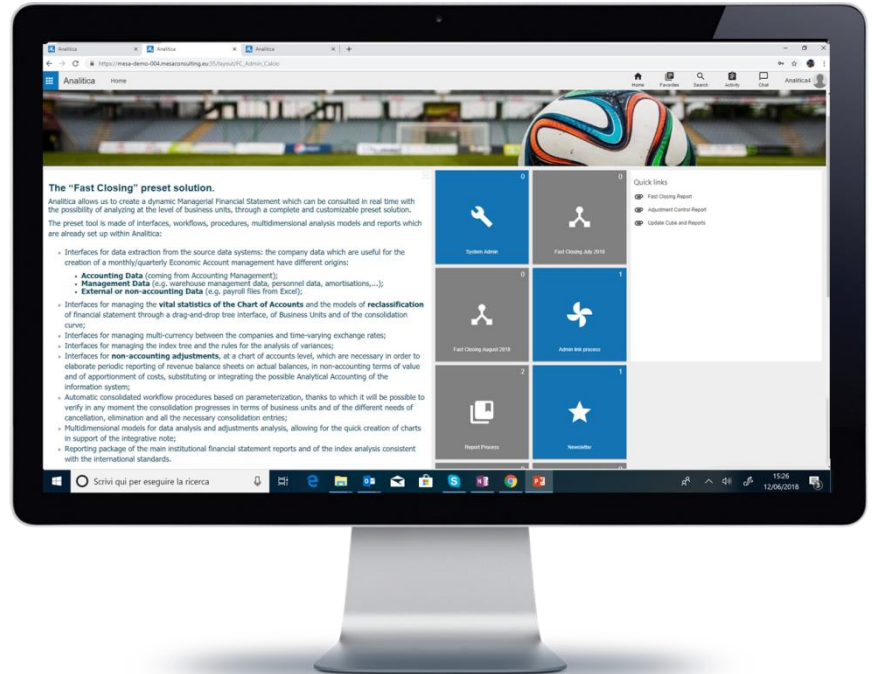


Reliability

APPLICAZIONI

Fast Closing

This application manages the **Fast Closing** process **efficiently** and **effectively**, through a **collaborative** process managed by a **workflow** where the different stakeholders participate in the editing of both the **statutory and management accounts**. Everything with simple **Excel interfaces** for which Analitica guarantees **data integrity** and total **traceability** of who has been rectified, by whom and when.



Features:

- Excel interfaces and automatic procedures to extract data from the feeding systems
- Excel templates to manage the chart of accounts and reclassification models
- Management and monitoring of the deadlines for single activities through an operational timetable integrated with automatic alerts
- Management of non-accounting data with activity tracking
- Reporting package of the main reports, index analysis and all the documents needed by top management



Error reduction



Reliability



Accessibility



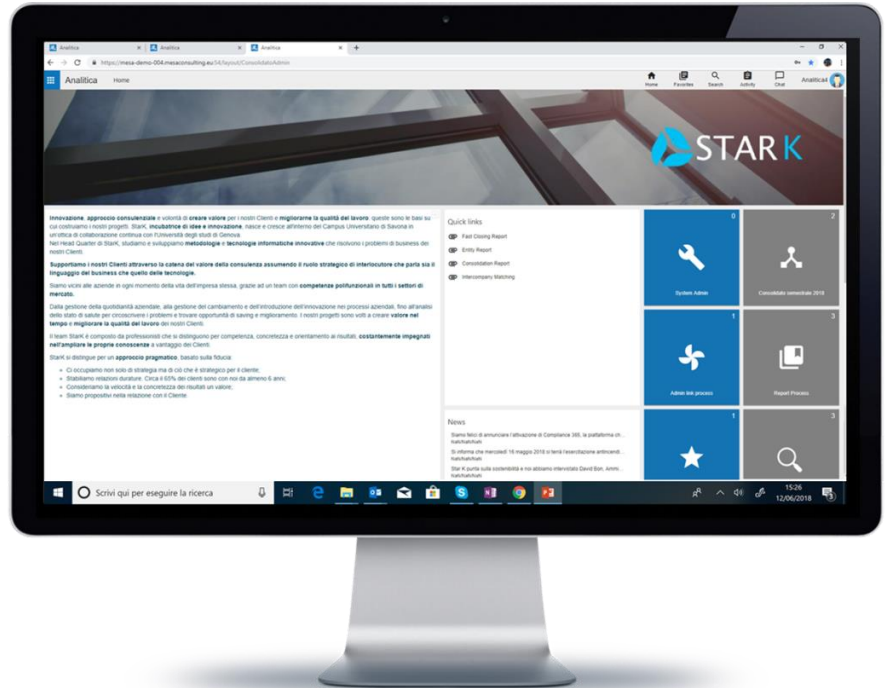
Decision-making
time reduction

APPLICATIONS

Consolidated financial statement

Analitica helps you in developing a **collaborative workflow** that leads you in the editing of the **consolidated financial statement**. Starting from the statements of the single companies, automatically imported by the management systems, it is possible to edit consolidated and intermediate sub-consolidated financial statements and insert the entries required by the existing legislation.

The **workflow structure** is fully customizable.



Features:

- Manage automatic and manual consolidated journals
- Import data from the company systems with automatic procedures and Excel interfaces
- Monitor the intercompany matching
- Manage the consolidated process in a collaborative way, assigning different roles and responsibilities to the users involved
- Edit all the needed reports in real time, also the ones addressed to stakeholders



Efficiency



Reliability



Accessibility



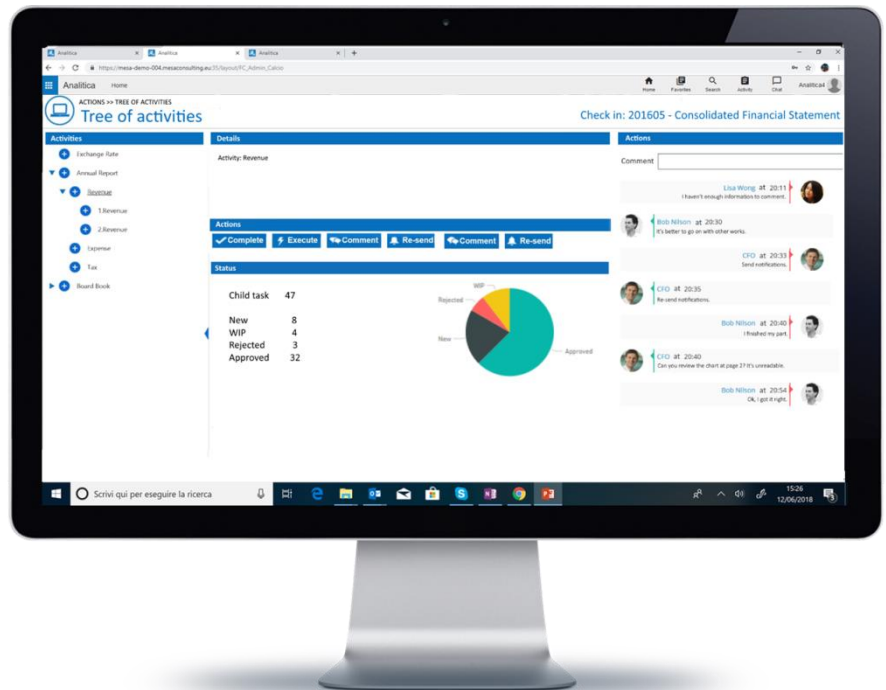
Error reduction

APPLICATIONS

Smart Disclosure

A **smart approach** to disclosure, integrated with the workflow of Analitica and its social portal.

Thanks to the innovative technology of **Smart Documents**, Analitica allows you to **collaborate, share and re-use information** without wasting time, giving you **full control** on data and information connecting with both company sources and documents.



Features:

- It is a unified solution to automate the whole closing and disclosure process
- It allows you to create smart and dynamic documents that are automatically updated
- It gathers elements and data coming from different sources, guaranteeing a single version of the truth thanks to the automated workflow



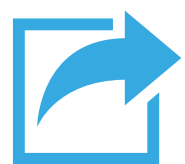
Focus on
insights



Security



Control and
competence



Flexibility

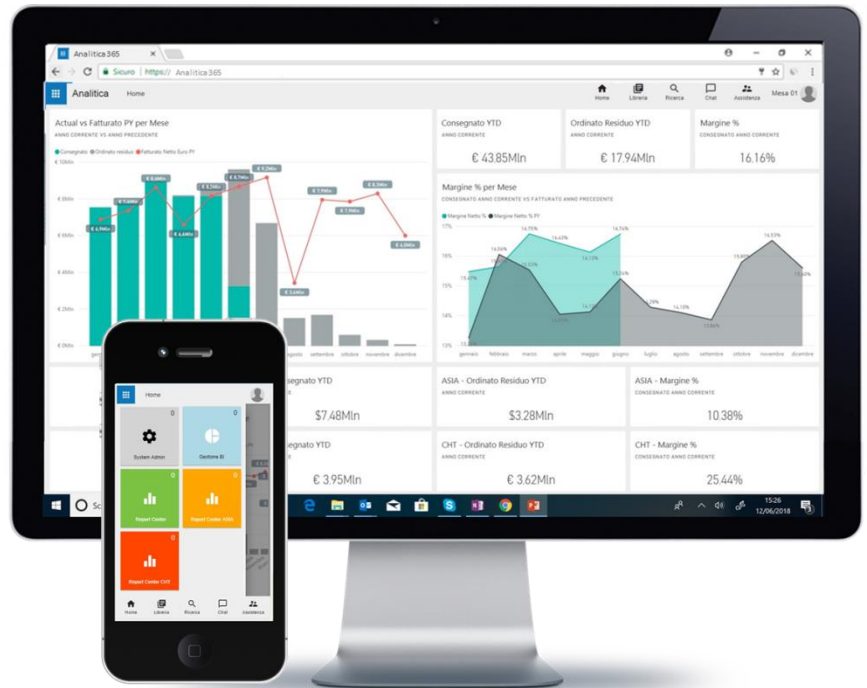
APPLICATIONS

IFRS 16

This application allows you to manage the transition to the new **IFRS 16 standard**.

An automated solution that processes large bulks of data, evaluations, **reporting** and **disclosure**, always according to the principles of IFRS.

Everything **integrated** either with the logics of the consolidated module or with the systems already used in the company.



Features:

- Powerful calculation engine that allows you to manage data and information
- Detailed and navigable graphic visualizations
- Ready-to-use solution containing a standard-compliant data model which can be immediately used by Clients
- Full integrability with the systems already used in the company, allowing easy extraction and uploading of data on any source system
- Easy creation of document in the Office formats (Word, Power Point..) starting from your data, directly with the IFRS Transition module, without copying and pasting



Updated reporting



Simplification



Unified solution



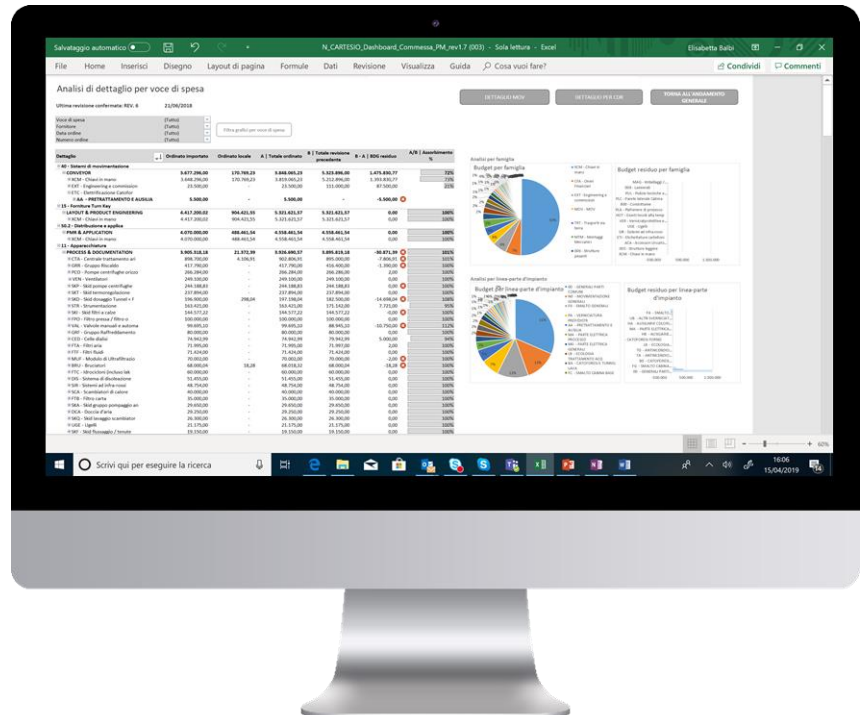
Transparency

APPLICATIONS

Production orders

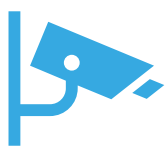
With **Analitica** we created a solution that allows you to quickly implement an efficient and effective **control system**, taking full advantage of the already **existing data** within the company systems.

Analitica is not limited to supervising costs and ETC, but it **manages also activity** progress through a **clear-cut set of stages**.

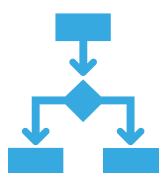


Features:

- It allows you to uniformly manage all the stages of the process in order to easily monitor the outcome of the contract
- It can be easily integrated with the systems already used in the company
- It allows you to take full advantage of the wealth of available data in a structured and collaborative way



Control on all
the stages



Structured
process



Waste
reduction



Security

Analitica is part of an integrated platform to manage other strategic processes

Companies are often structured to manage core daily processes with the use of more or less complex IT systems that coordinate, for instance, production activities or billing and accounting.

What has emerged in recent years is that there are **several strategic business processes not adequately supported by digital technologies** because ERP systems and the **applications used are too rigid and not user-friendly enough** for those people who need to use such tools occasionally.

For these reasons we have developed a truly unique product on the market, **an innovative technology engine** that allows you to **manage all strategic processes** that are not usually controlled and that require a **strong collaborative element**. All this by improving the tools that your resources already know with a software **natively integrated** with **Microsoft** applications.

Today we have different products based on our engine, among which that cover the following areas:

IMPACT.
ESG & sustainability technology by MESA

*It supports corporate **sustainability** in accordance with the most important global standards (**GRI Certified**).*



CONTINUITY.
crisis management & prevention technology by MESA

*It allows you to manage the **holding** of companies in emergency, measure the actions taken and **give evidence** to investors.*



PROCOMP.
GRC & legal technology by MESA

*It guides the **Governance Risk & Compliance** through the «Digital Transformation» improving quality, productivity and efficiency.*



SKILLS.
learning technology by MESA

*It allows to support **synchronous-asynchronous mixed training** through a guided, dynamic and personalized study path.*



ANALITICA.
planning & consolidation technology by MESA

*It manages processes and performances of the **finance** team, a full support for the **CFO** and all the business users.*



OPTIMIZE.
digital twin & artificial intelligence by MESA

*It allows to **optimize** the operation of the product or of the **real process** through digital simulation.*



Who chose us

Satisfying our Clients and improve the quality of their work are our priorities.
Our clients speak for us.



ADVANCED TECHNOLOGY SPORTSWEAR





Contacts:
info@analiticanet.com
0039 019 86 1818

Headquarter
Campus Universitario
Via Magliotto 2
17100 Savona
Italy