

# DEFENCE.

cyber & IT risk protection by MESA

## PRODUCT OVERVIEW

The information contained in this document is the property of MESA and other companies where indicated.  
This document must not be reproduced, published or distributed or made available to third parties or altered in any way.

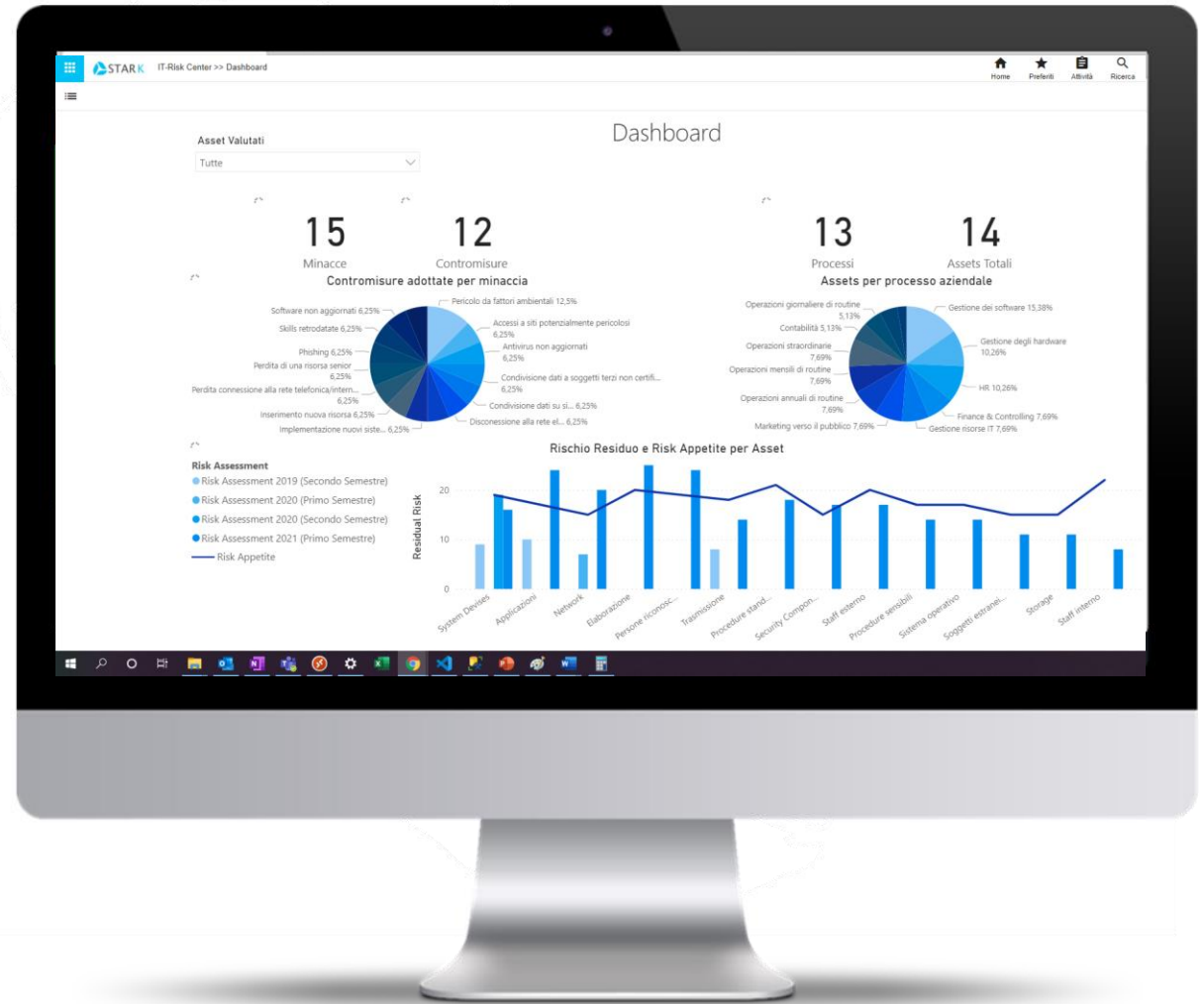


# DEFENCE.

Cyber & IT risk protection by MESA

DEFENCE is the platform that allows you to fully manage cyber & IT security ensuring compliance with the highest standards in use.

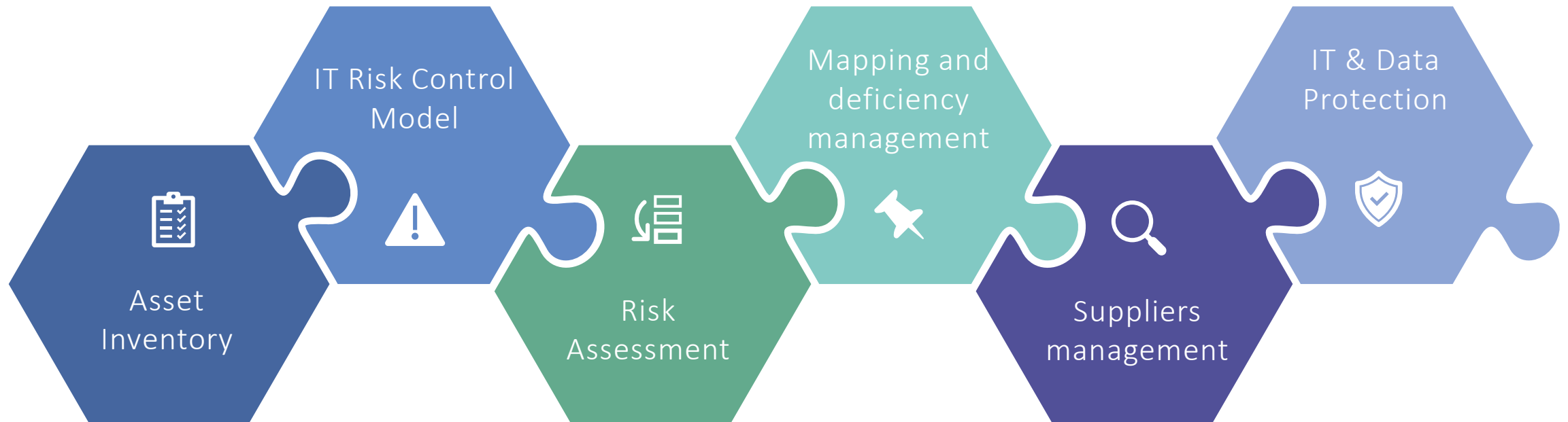
With DEFENCE it's possible to map IT assets and company processes, activate all the necessary security measures guaranteeing effective protection of IT security and compliance with the main standards including ISO 27001.



# WHY CHOOSE DEFENCE. OUR UNIQUE SELLING PROPOSITION

- ✓ Supports the identification, evaluation, monitoring and control of the organization's IT risks, in a complete and integrated way;
- ✓ Allows to manage IT incidents in an organized way by shortening resolution times and by limiting legal responsibilities (d.lgs 231);
- ✓ Facilitates the management of IT suppliers and related document flows by optimizing their timing and governing the formal storing process;
- ✓ Offers the possibility to carry out Risk Assessment on each identified asset and to identify vulnerabilities that put IT security at risk;
- ✓ Includes reports and dashboards useful for capturing situations and obtaining information;
- ✓ It is based on a concrete, operational and updated management methodology;
- ✓ It is a modular, flexible and customizable platform

# 6 INTEGRATED MODULES





# ASSET INVENTORY

## NECESSITY

Simplify the IT asset mapping and updating process

Have a complete and updated 360 ° picture of the IT infrastructure

Manage assets on a daily basis



## SOLUTION

With DEFENCE asset inventory is easy, immediate and updated in real time

DEFENCE gives an updated view of all company assets

DEFENCE allows the detection of all IT assets and allows to manage their life cycle in order to carry out updates or disposals

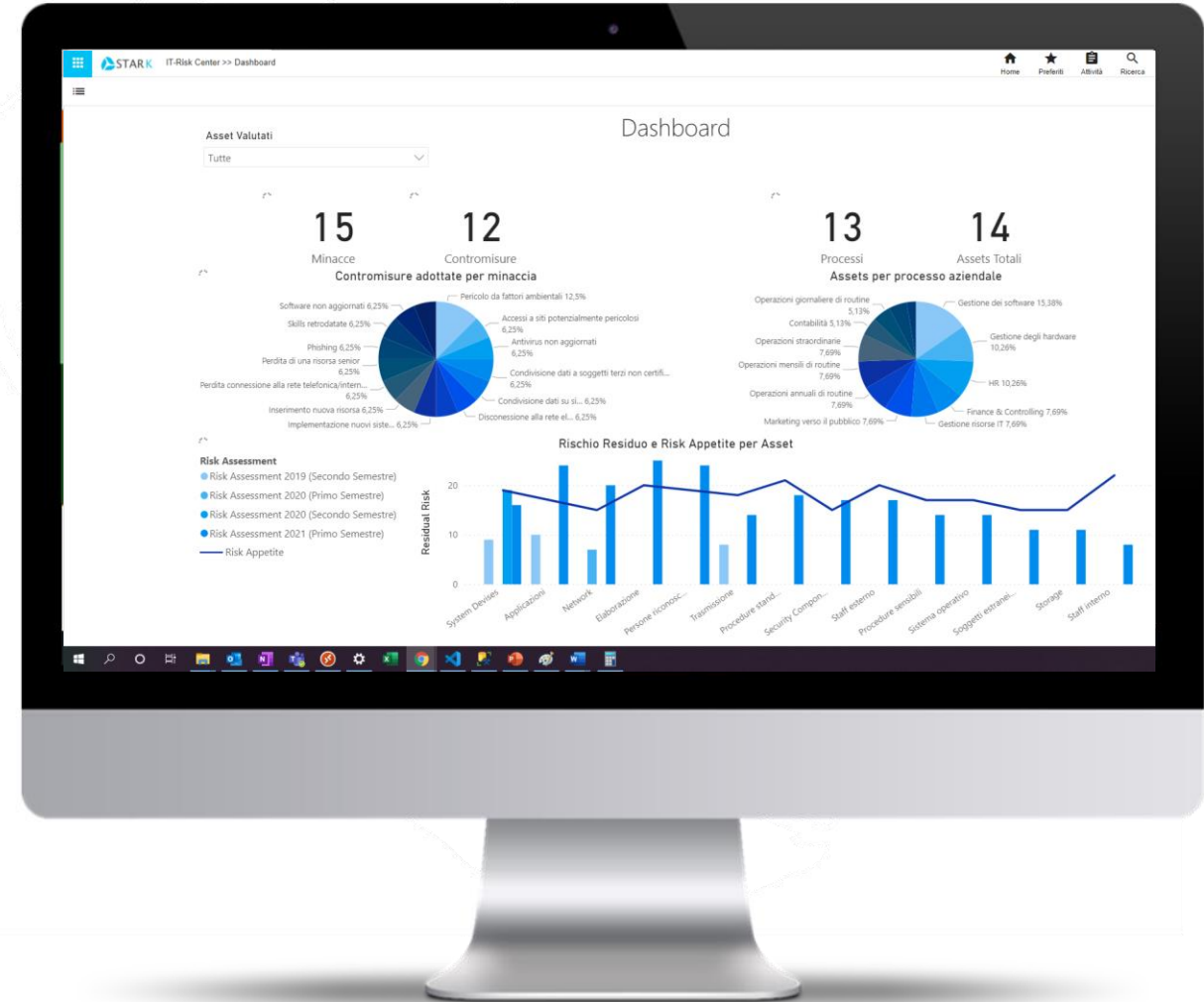


# ASSET INVENTORY

It is the solution for IT assets management within the organization.

Classification of IT assets generates a single updated and categorized inventory to act on for management control (maintenance, updating...).

It keeps track of all **IT resources**, providing a sort of ID of the asset (who uses it, what it contains, what it is associated with ....).





# IT RISK CONTROL MODEL

## NECESSITY

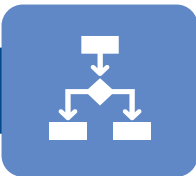
Having knowledge and control of the IT area



## SOLUTION

Full mapping starting from business processes and that associates assets, possible risk scenarios and organizational countermeasures to adopt to limit risks

Process management  
and organization



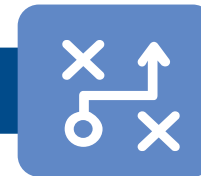
Association of in use  
assets



Assessment of  
related threats



Countermeasures to  
be taken



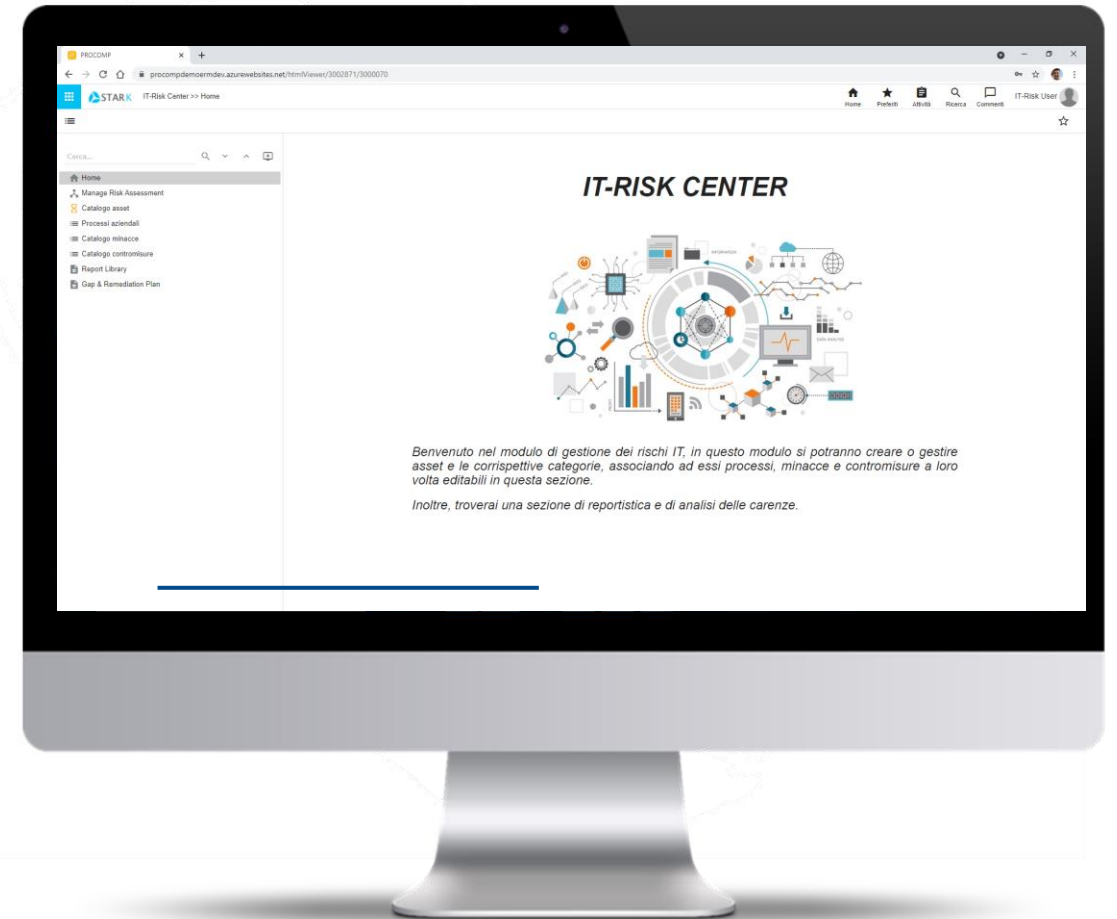


# IT RISK CONTROL MODEL

The module allows business processes and IT asset mapping, cataloging sub and counter measures

IT asset are related to business processes, associated with possible threats and relative countermeasures.

The aim is to ensure maximum knowledge of the risk associated with each identified asset







# RISK ASSESSMENT

## NECESSITY

Assess risk, formalize and keep the result up to date

Be compliant with mandatory regulations, recognized standards and the most up-to-date security best practices



## SOLUTION

DEFENCE digitizes the Risk Assessment process, monitoring the progress and the results obtained with constant updating



The risk assessment performed on assets is based on a methodology that leverages impact quantification against three GDPR scenarios: confidentiality, integrity, and data availability

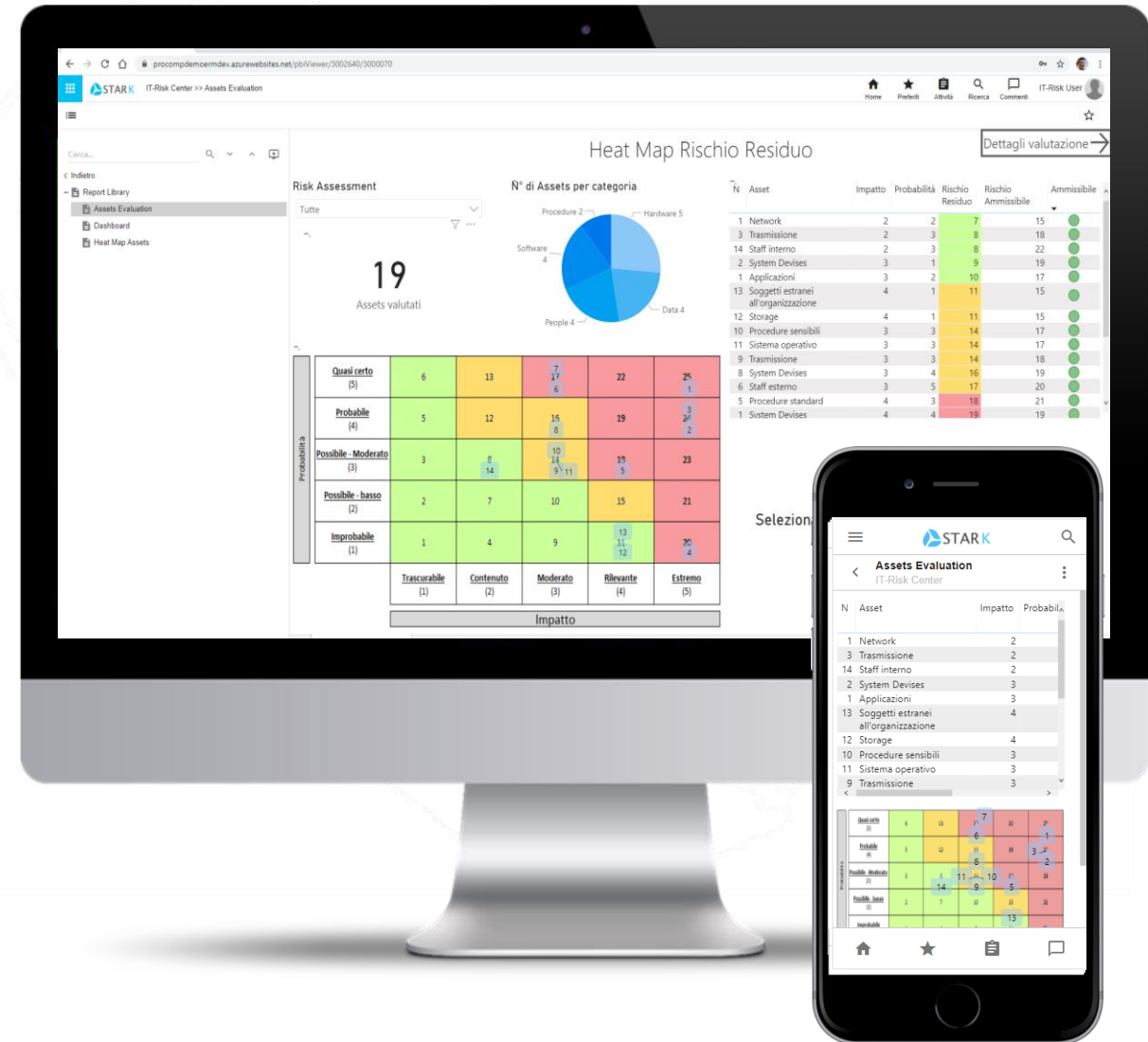


# RISK ASSESSMENT

Calculates and monitors the residual risk and its acceptance.

It takes advantage of the risk appetite to highlight the gap and activate countermeasures.

The solution exploits collaboration and approval processes by involving the different users who own the impacted processes and by make them interact with each other.





# MAPPING AND DEFICIENCY MANAGEMENT

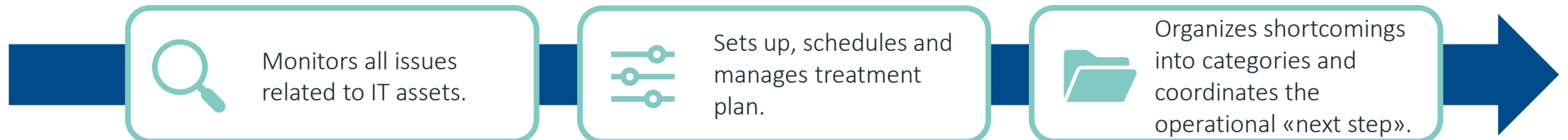
## NECESSITY

Address shortcomings arising from issues, external sources and risk assessments and other sources



## SOLUTION

It allows the monitoring of all issues and for each identified shortcoming it permits to associate a treatment plan in order to manage it.

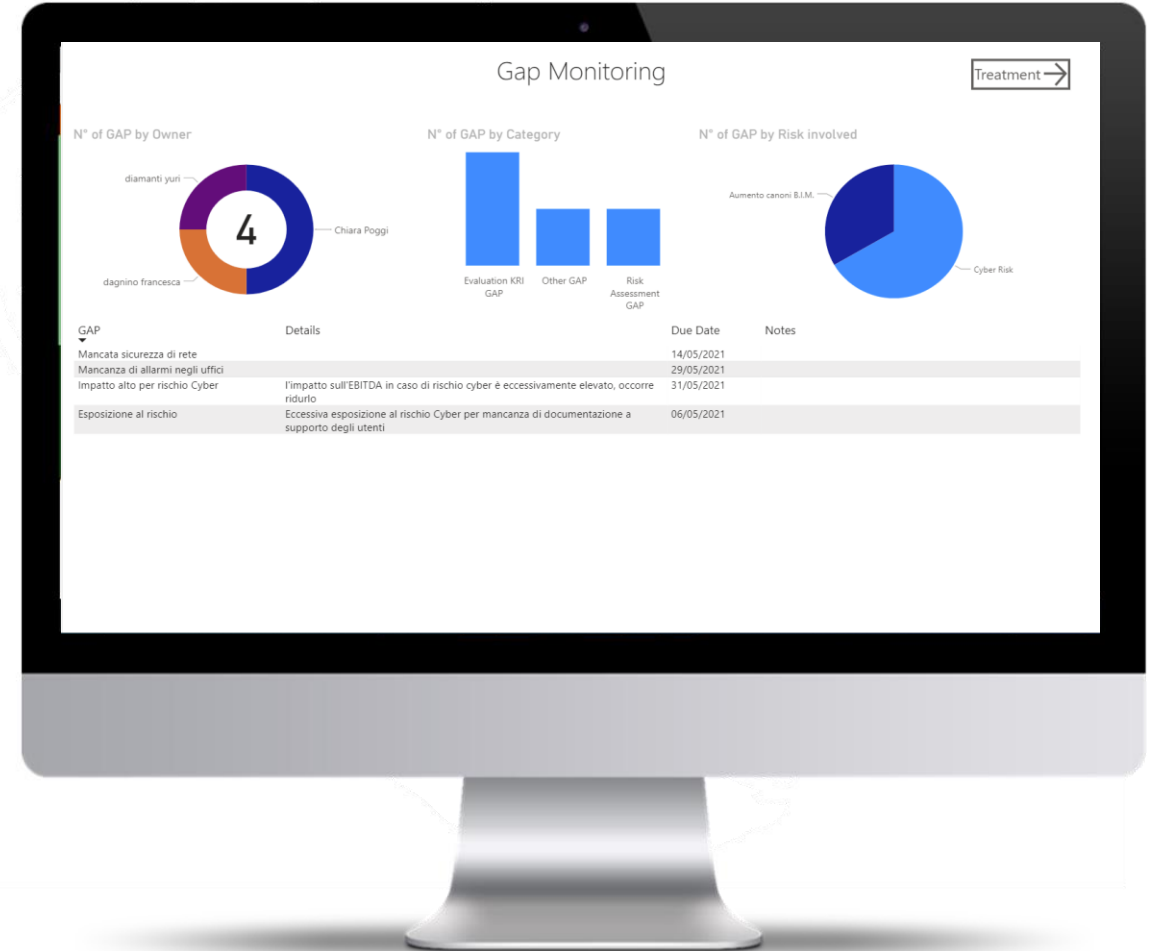




# MAPPING AND DEFICIENCY MANAGEMENT

DEFENCE allows to manage the complete mapping process and shortcomings up until their resolution.

Thanks to DEFENCE it is possible to associate an **ad hoc treatment plan** for each shortcoming and carry out a **new Risk Assessment** to determine if the shortcoming has been solved.





# SUPPLIERS MANAGEMENT

## NECESSITY

Organize formal and document related aspects connected to supplier management

Assess risks and identify deficiencies associated with the IT supply chain



## SOLUTION

DEFENCE manages the supplier management cycle through automatic alerts and reminders linked to the different management and formal deadlines

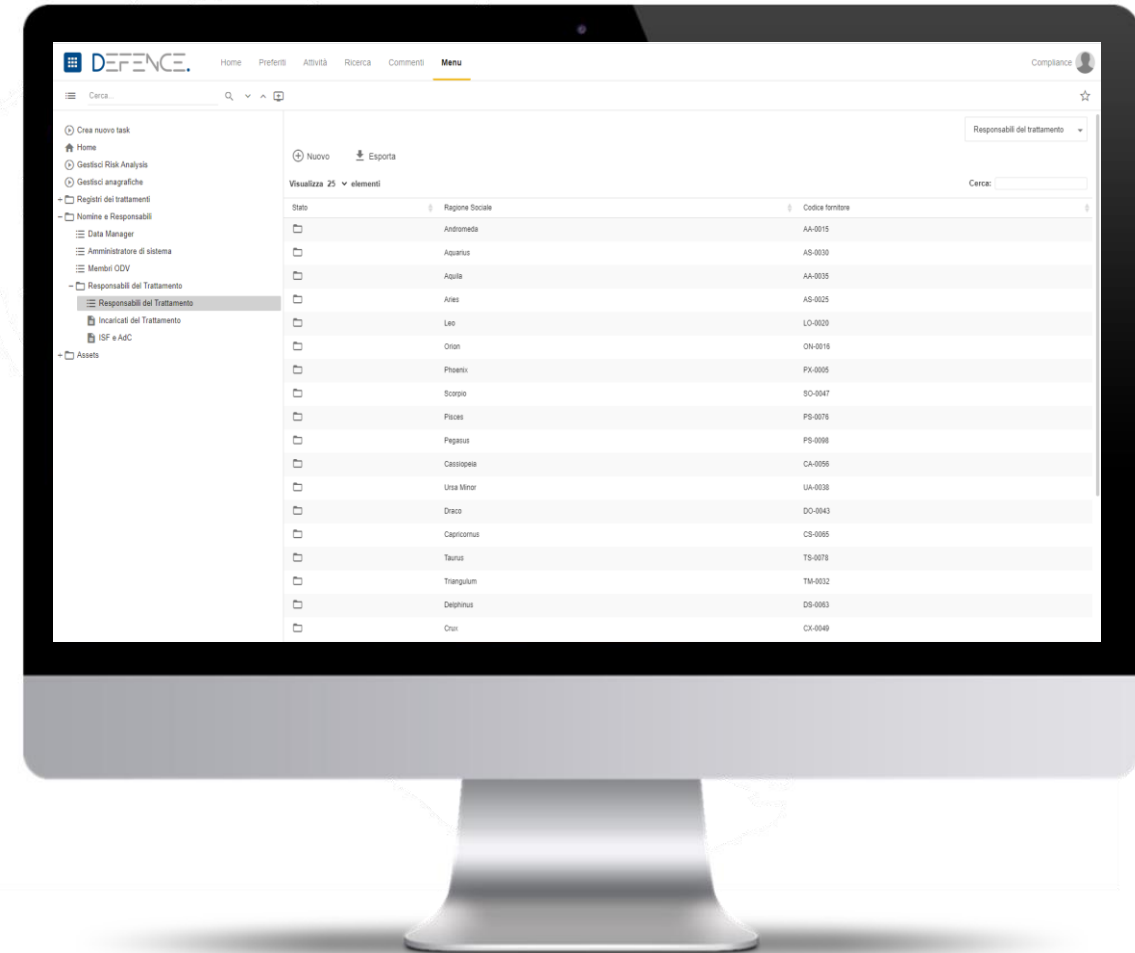
DEFENCE allows to carry out Audits using pre-set control checklists. If necessary, the Audit environment can be opened directly by the supplier who will independently fill in and update its data



# SUPPLIERS MANAGEMENT

It helps manage proactively the document and signing cycle when entering and leaving the company (changes, review, compilation and signatures). It takes advantage of the concept of **signaling** to immediately highlight the progress status.

It allows to identify and mitigate risks deriving from third parties and to map any shortcomings.





# IT & DATA PROTECTION

## NECESSITY

Set up and demonstrate IT governance

Ensure compliance of the organization's processes based on contingency norms



## SOLUTION

DEFENCE organizes the management connected with Data Protection by formalizing Reports and Dashboards control.

DEFENCE allows to have a single integrated repository for the entire company for the storage and operational management all aspects related to appointments, registers, DPIAs, ...



# IT & DATA PROTECTION

It allows a 360° management of IT treatments allowing the monitoring of security measures.

It traces data processors, both internal and external.

It governs the treatment's management policies and all the information associated with it.

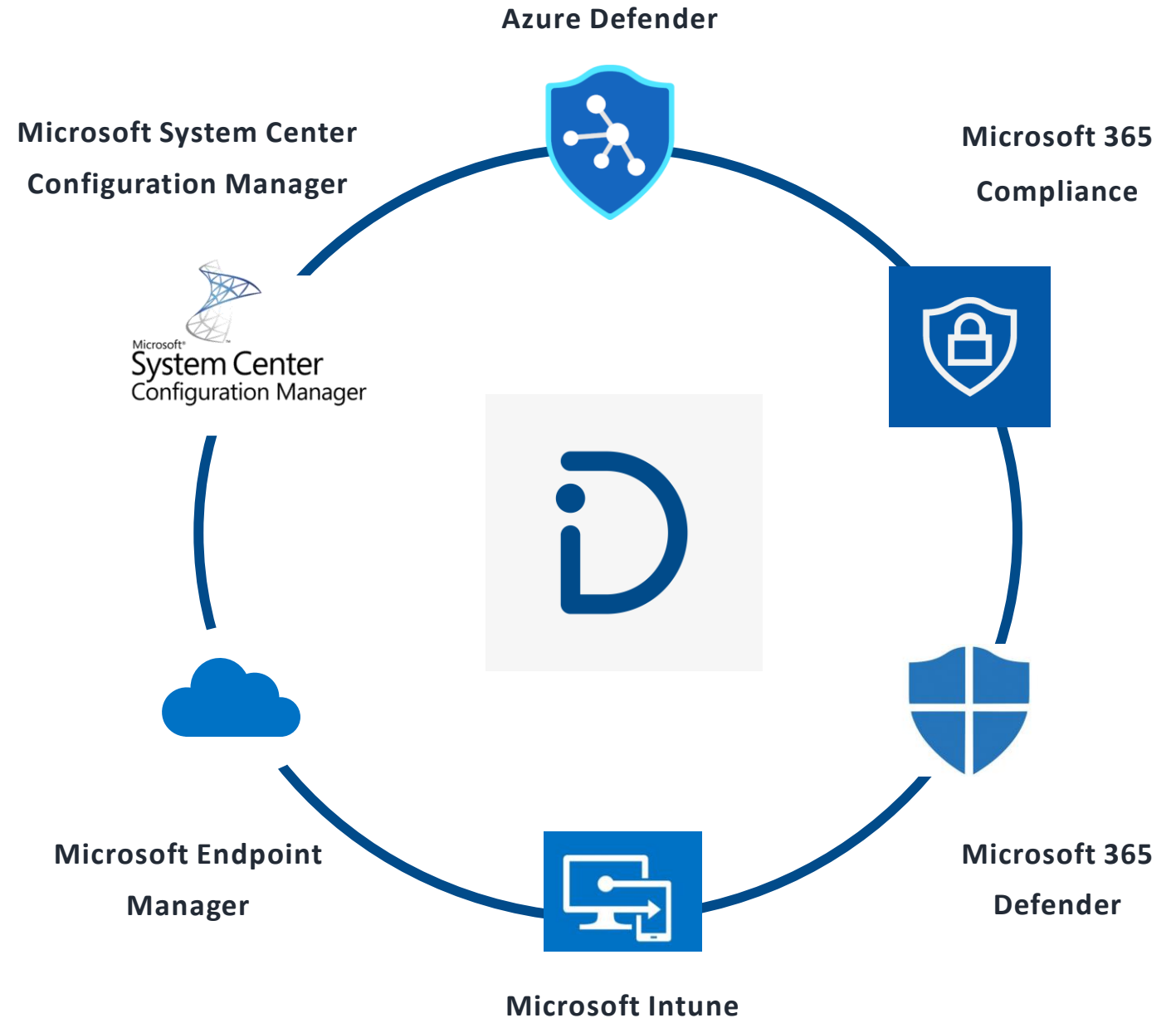




# FEATURES

Input data of the DEFENCE modules can be generated **automatically** using specific software from the Microsoft suite.

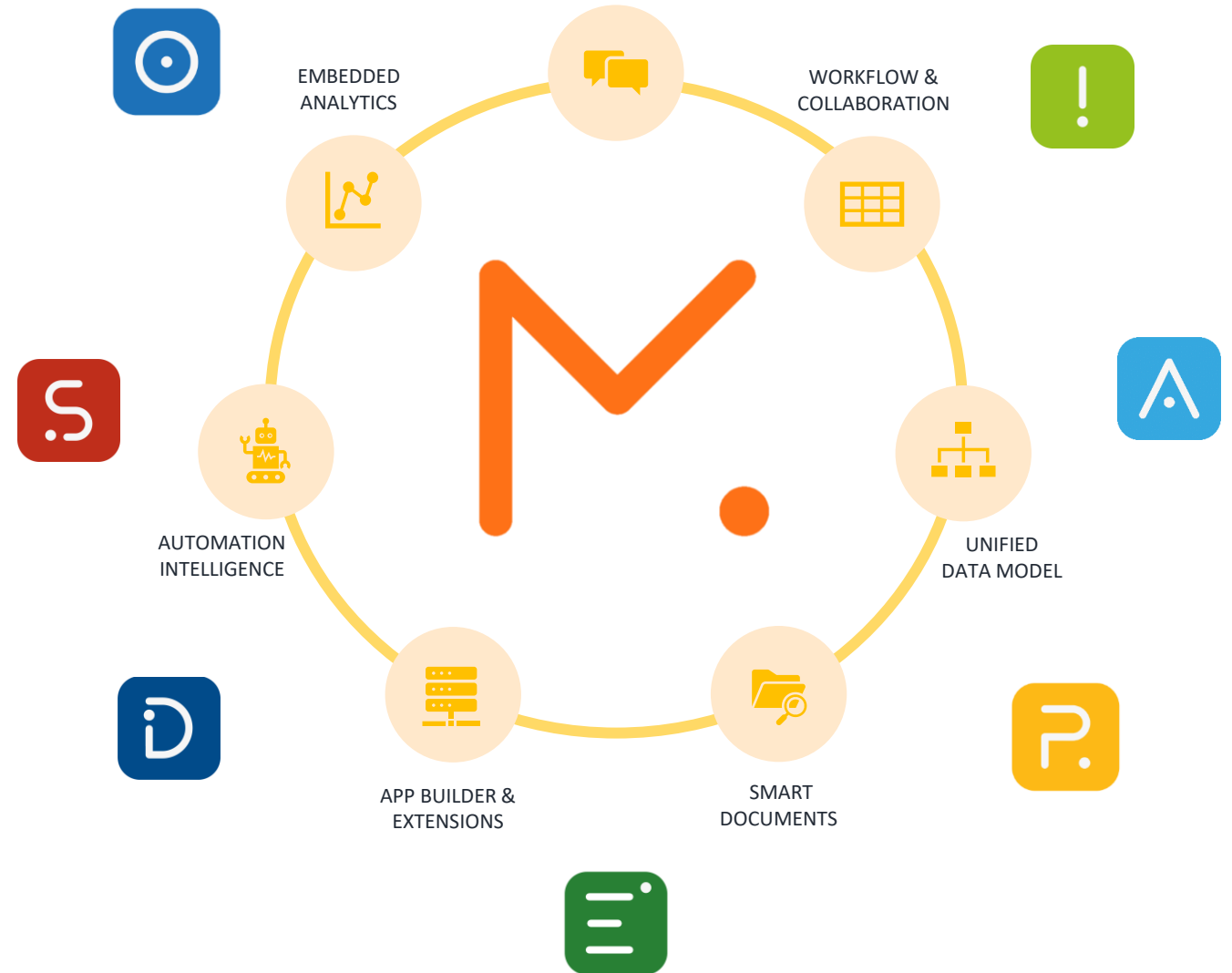
Our Cybersecurity division offers a **specialized consultancy** in order to support the customer in all phases of analysis and implementation of the system.



# EASILY DESIGN YOUR DIGITAL TRANSFORMATION

We have developed MESA, an innovative technology that enables **digital transformation** by **intelligently automating processes** by combining a complex BPM engine with **simulative and intelligent algorithms** integrating **collaborative document production technologies** into a single **low-code solution** and **integrated with Microsoft Teams, Office and PowerPlatform technologies**.

**Plug & play** digital transformation **solutions** for your **business processes** are available on this platform.



# BUSINESS SOLUTIONS



Impact supports corporate **sustainability** in accordance with the most important global standards (**GRI Certified**).

IMPACT.



Analitica manages processes and performances of the **finance** team, a full support for the **CFO** and all the business users.

ANALITICA.



Procomp guides the **Governance Risk & Compliance** through the «Digital Transformation» improving quality, productivity and efficiency.

PROCOMP.



It allows you to create "**engagement**," manage documentation **smartly**, and **manage** resilience and **continuity** during emergencies.

ENGAGE.



To fully manage **cyber & IT security** while ensuring compliance with the **highest applicable standards**.

DEFENCE.



Skills allows to support **synchronous and asynchronous mixed training** through a guided, **dynamic** and personalized study path.

SKILLS.



Optimize allows to **optimize** the **functioning** of the **product** or the **real process** through **digital simulation**.

OPTIMIZE.

# SOME CLIENTS



Dompé



# DEFENCE.

cyber & IT risk protection by MESA

[www.mesacloud.tech](http://www.mesacloud.tech)

Headquarter - sede legale

Campus Universitario

Via Magliotto 2

17100 Savona (SV) - Italy

General Inquiries

Phone: +39 019 861818

Email: [info@mesacloud.tech](mailto:info@mesacloud.tech)

ISO 27001  
BUREAU VERITAS  
Certification

