

# IMPACT.

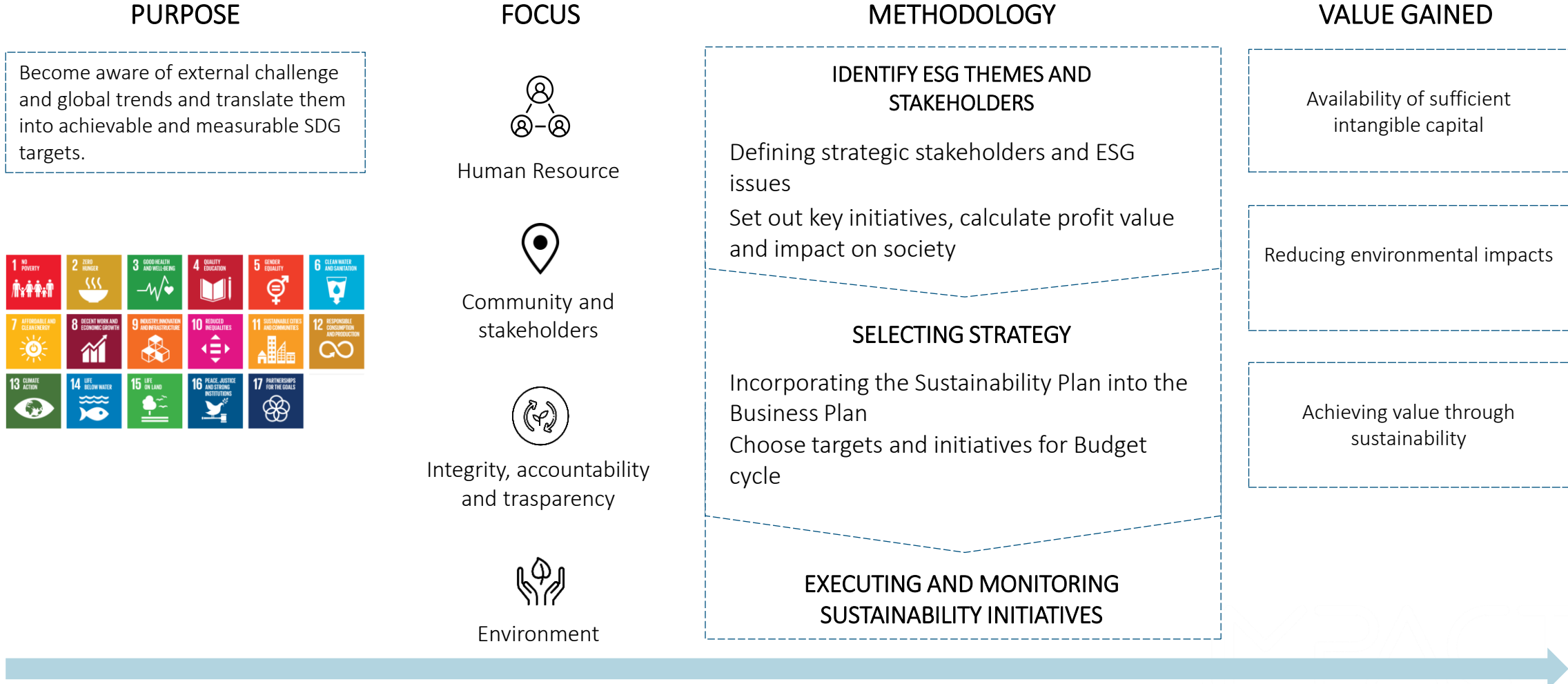
ESG & sustainability technology by MESA

## PRODUCT OVERVIEW

The information contained in this document is the property of MESA and other companies where indicated.  
This document must not be reproduced, published or distributed or made available to third parties or altered in any way.

# CORPORATE SUSTAINABILITY

A complex and difficult scenario to manage with multiple processes, data and stakeholders at stake



## OPTIMIZING DIGITALIZED PROCESSES

Digital transformation technologies are simple and offer many possibilities: **reducing the costs** of managing reporting activities and sustainability initiatives, improving timeliness in **managing deadlines**, and quickly and easily **identifying areas of improvement in ESG objectives** to develop strategic projects.

## CENTRALIZATION OF DATA AND DOCUMENTS

No more exchanging emails, Excel and Word files: the platform allows you to **approve data and narratives quickly**, with fewer manual errors. **Data, changes and revisions are traceable** and reusable in other corporate information systems.

## IMPROVING STAKEHOLDER ENGAGEMENT

Assigning responsibilities with a centralized system of **segregation of duty** and control on **mobile devices** allows control over the **progress of activities**, the relationship with stakeholders and the **improvement of the audit process** .



WE NEED A  
DIGITAL  
PLATFORM TO  
MANAGE  
SUSTAINABILITY

# IMPACT.

ESG & sustainability technology by MESA

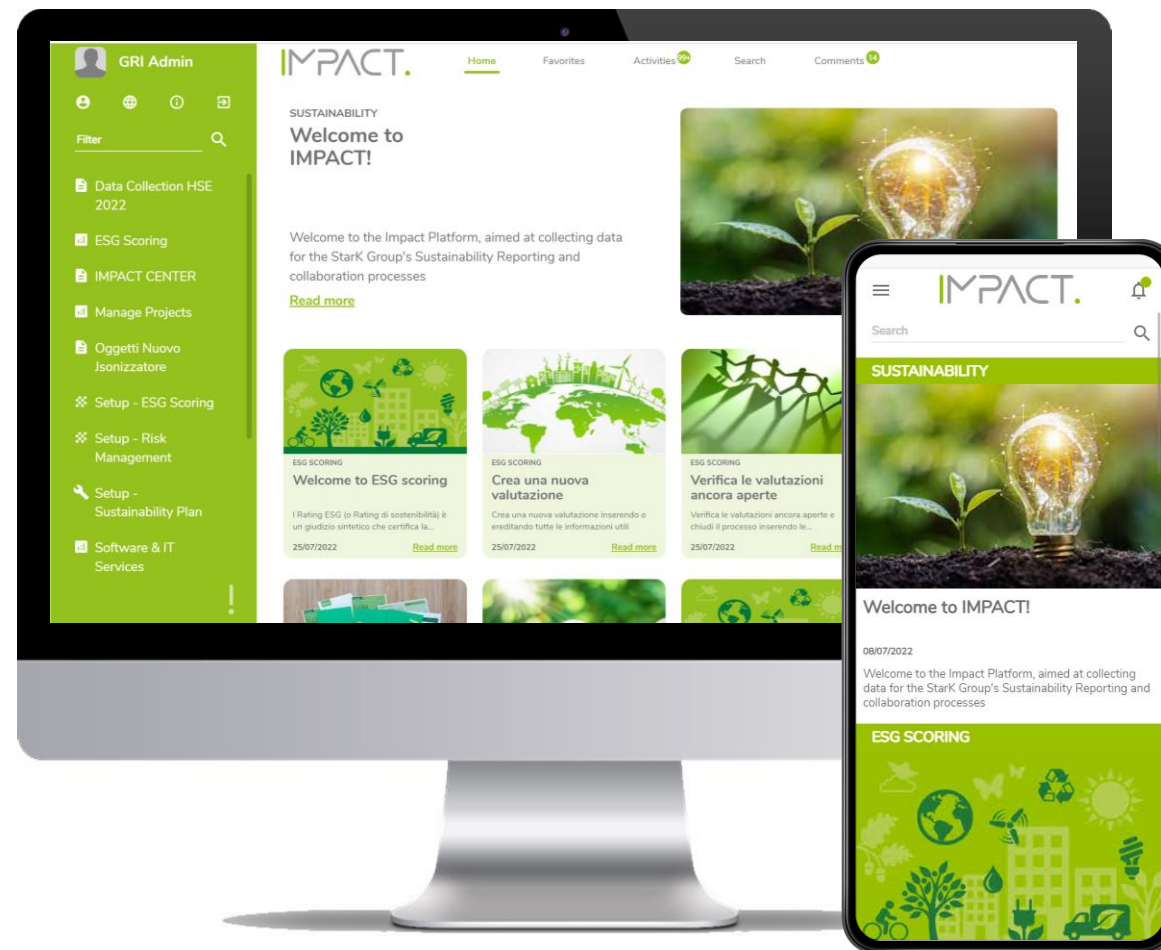
IMPACT is the platform that optimizes corporate sustainability management.

IMPACT manages ESG processes, environmental and social performance, ensures compliance with international standards, minimizes risk, and improves corporate value creation.

IMPACT integrates the investor-oriented logic of **taxonomy** with the stakeholder-oriented logic of **GRI**. It also allows companies to demonstrate the financial value of sustainability and to improve the accessibility and transparency of reports as required by the new European **CSRD** regulation.



premiato nel corso del summit internazionale dei giovani imprenditori in Giappone



# TECHNOLOGIES TO SUPPORT PROCESSES

## DATA COLLECTION

It allows data collection by interfacing with several external systems, as well as formulating a data collection process with **different frequencies**.

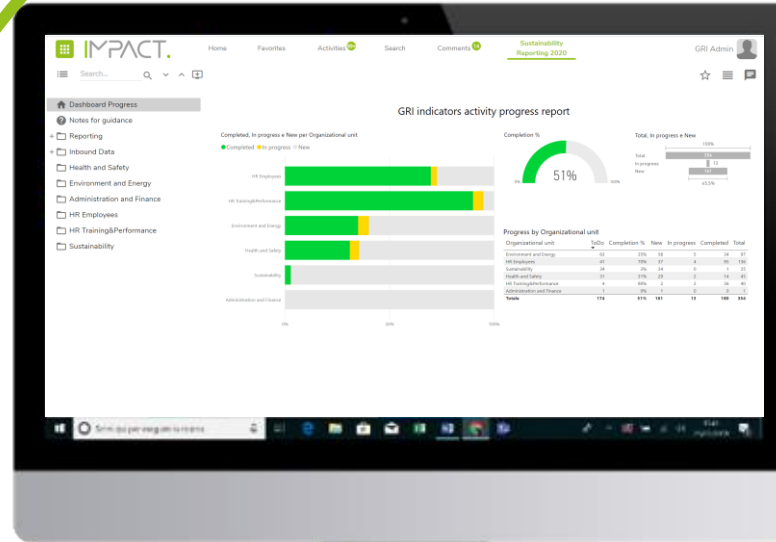


## COLLABORATIVE WORKFLOW

It allows you to **manage different hierarchical approval levels** and structure the collection of data and “narrative” information. It allows to manage and check **task, activities, deadlines and alert**.

## SMART DISCLOSURE

It **simplifies and automate** the creation of final documents



## CHECK – TEST

It allows **cross-checks** between calculated cells automatically ensuring consistency and coherence between data.



## REPORTING ENGINE FLEXIBILITY

It allows information to be managed in an integrated way across the **different areas of sustainability**.



## "WHO DID WHAT"

### TRACEABILITY

Easily ensures **compliance with regulatory requirements** and facilitates third-party audit activities..

# SOME OF OUR APPLICATIONS

## Taskforce on Climate-related Financial Disclosures

Map ESG risks and opportunities with ESG topics to improve governance, generate Risk Assessments and Strategic Plans by monitoring Targets and Metrics.

## HSE collection and monitoring

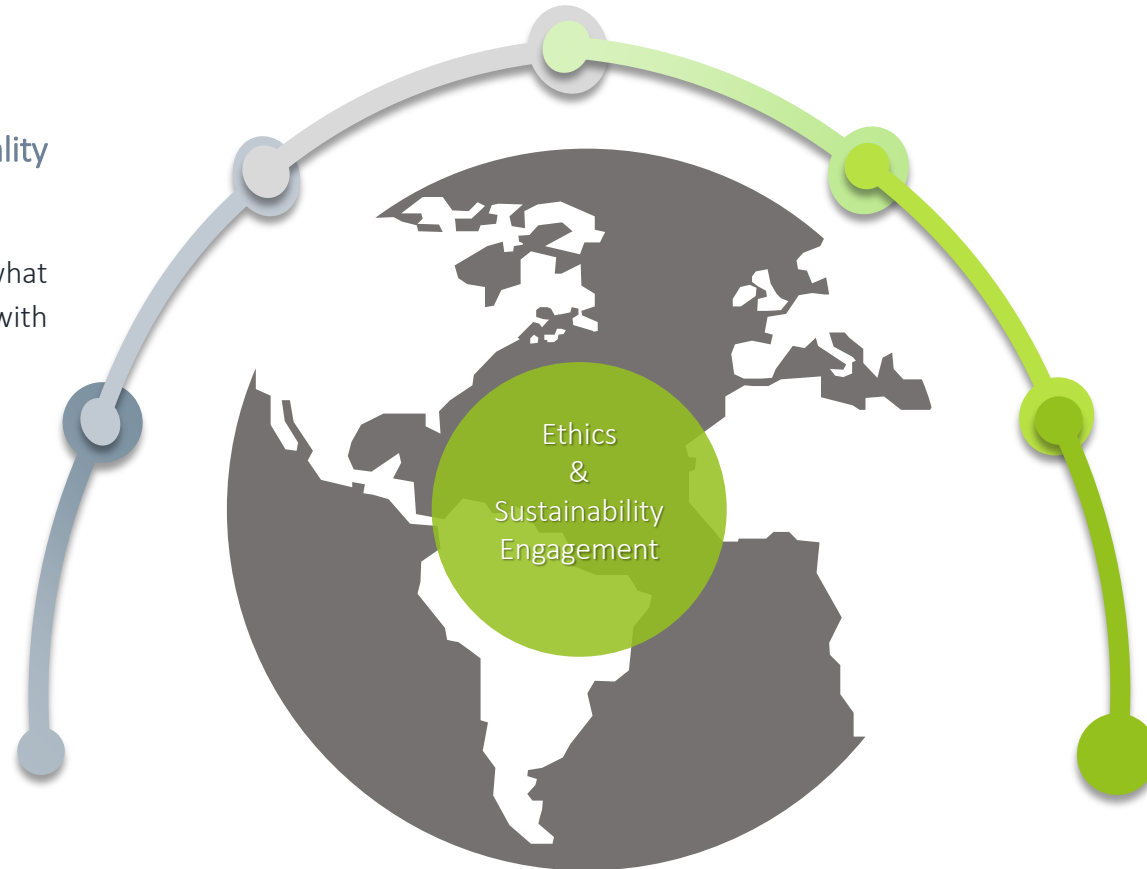
Optimize environmental resources and reduce impact with intelligent data analysis. Automate data entry into DNFs.

## Stakeholder Engagement & Materiality Matrix

Engage your Stakeholders and understand what is important to them. Align your company with the main topics of sustainability.

## SDGs-based strategy and sustainability plan

Develops corporate strategy related to sustainability issues by creating collaboration among the company's top Managers



## Sustainability Reporting

Processes documents (in some cases mandatory for listed companies) reducing costs and impacts on the organization and improving business efficiency.

## Scoring ESG

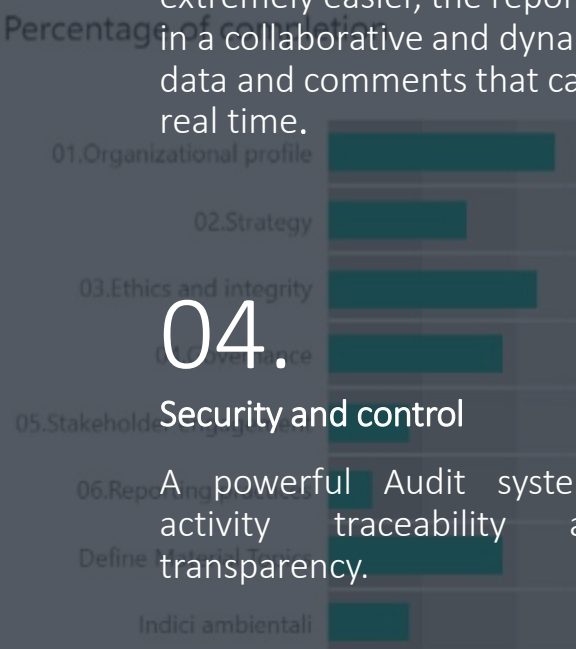
Evaluate the sustainability of your supply chain by directly involving suppliers or customers in a customized assessment that can provide an objective ESG Scoring. Involve the whole supply chain, from suppliers and customers to sustainable investments

# BENEFITS

01.

## Simple, dynamic and accurate reporting

Having accurate reports becomes extremely easier, the reports are updated in a collaborative and dynamic way, with data and comments that can be edited in real time.



04.

## Security and control

A powerful Audit system guarantees activity traceability and process transparency.

02.

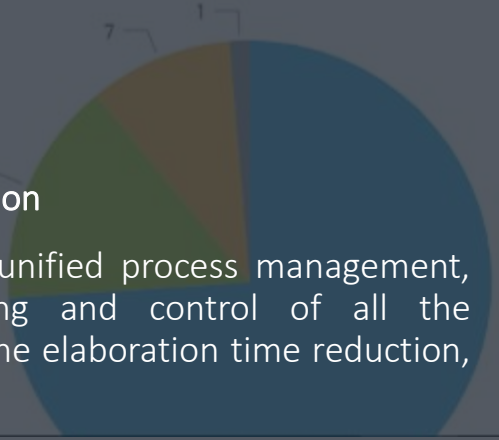
## Comfort and user-friendly

IMPACT enhances the systems existing in the company and it guarantees a large variety of formatting options, thanks to the user interface implemented by Microsoft Word.

05.

## TCO reduction

Thanks to unified process management, the tracking and control of all the activities, the elaboration time reduction, etc.



03.

## Elimination of human errors

Manual processes are automated in order not to waste time in confirming and researching for information. Users have always previous year data to understand if the data inserted is correct.

06.

## Better quality of collected data

Possible data entry errors are significantly reduced through automated aggregation and integration with external systems, as well as cross-checking of calculated fields.



# Sustainability Reporting

## Simplify and optimize the Sustainability Reporting and the Non Financial Disclosure

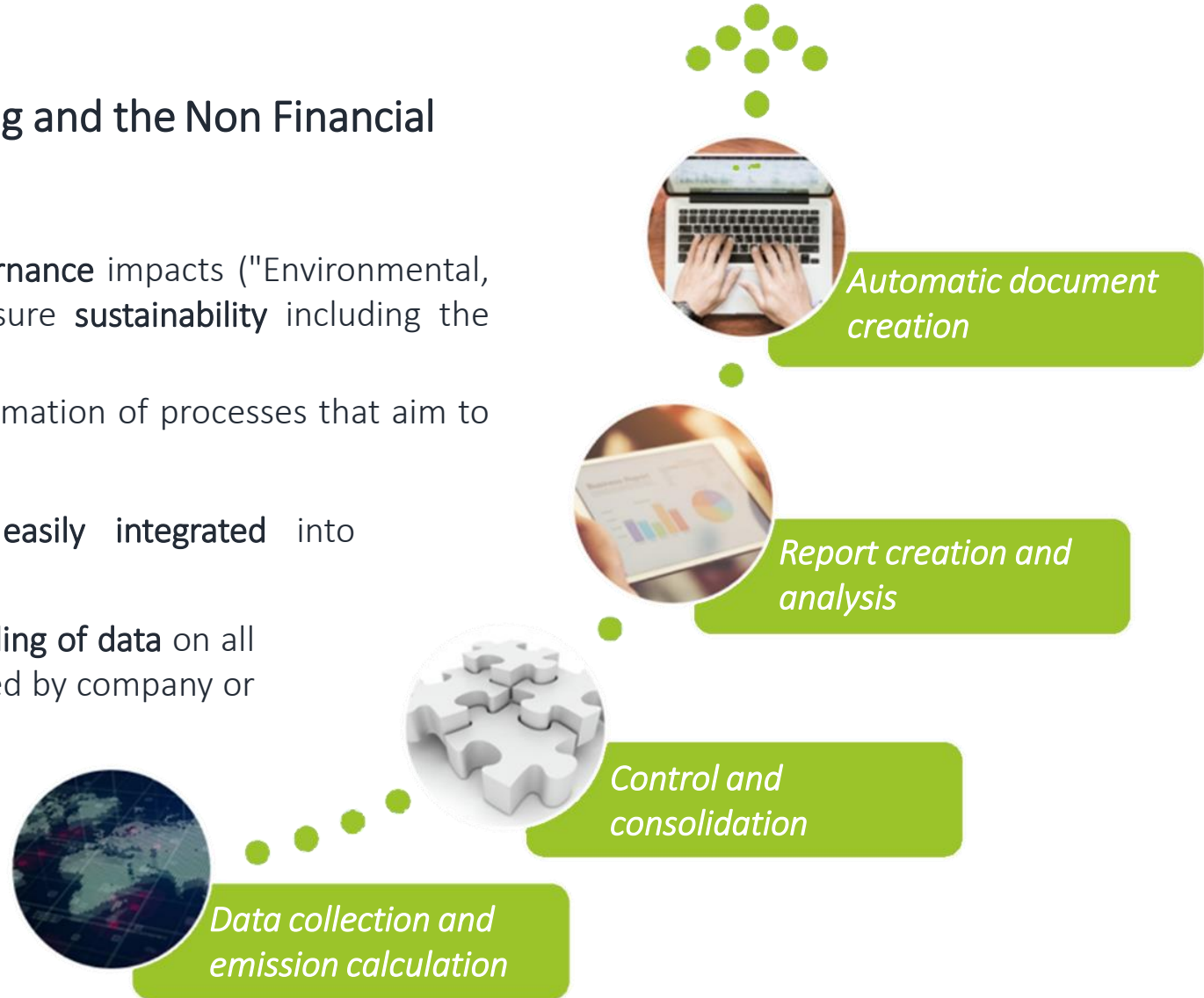
IMPACT allows to measure **environmental, social and governance** impacts ("Environmental, Social, Governance") the three essential factors to measure **sustainability** including the connection with **SDGs**.

**Our technology represents** the state of the art for the automation of processes that aim to produce final documents.

**Data** already present in **company systems** can be easily integrated into our system.

Our **intelligent reporting technology** enables the **understanding of data** on all indicators, whether GRI, CDP, SASB, TCFD, DNK or customized by company or advanced reporting such as Conflict Minerals (RMI).

IMPACT guarantees full adherence to the principles of the **EU taxonomy**.

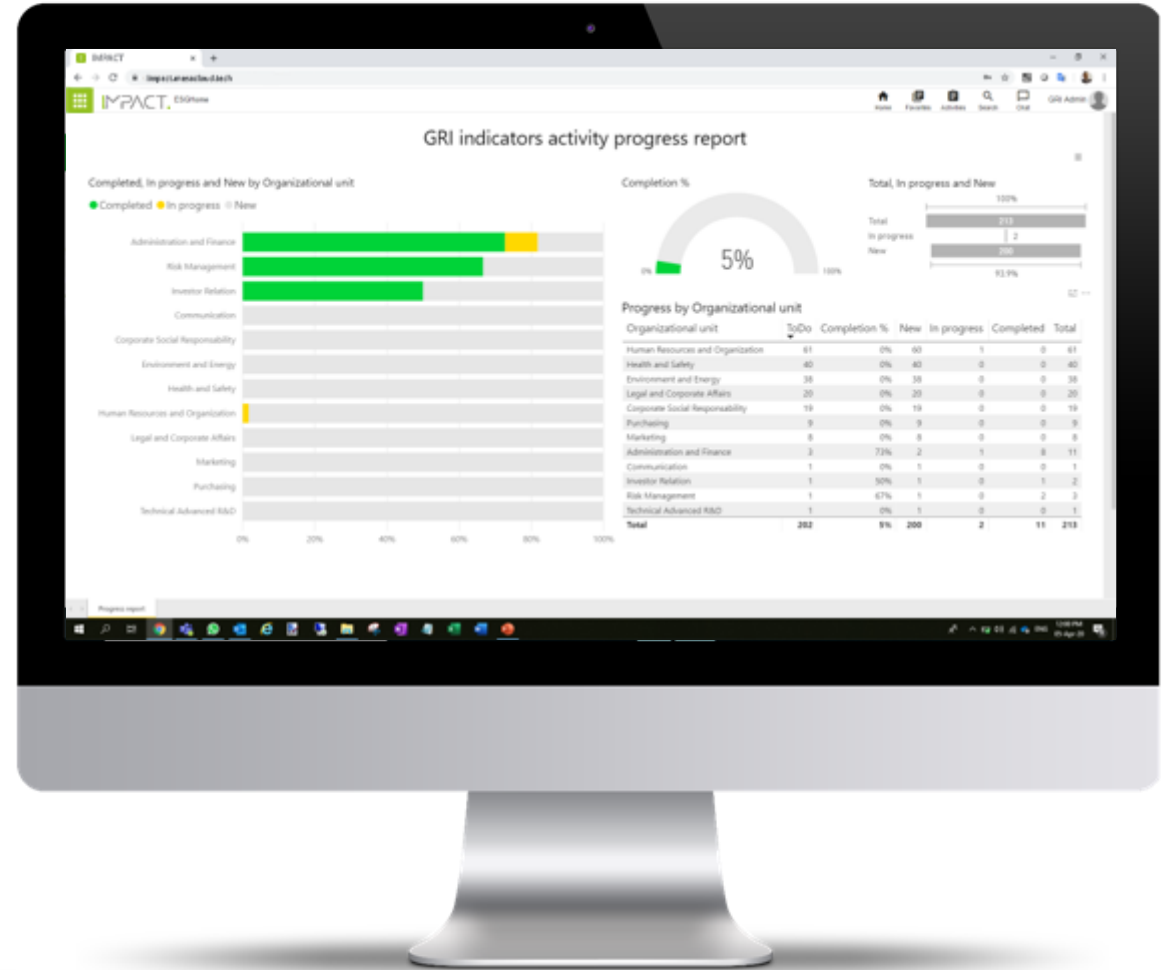




# Sustainability Reporting

Preparing the Sustainability Report or the Non-Financial Statement is a complex and burdensome process, but thanks to **IMPACT's collaborative workflows, Smart Disclosure and Web App**:

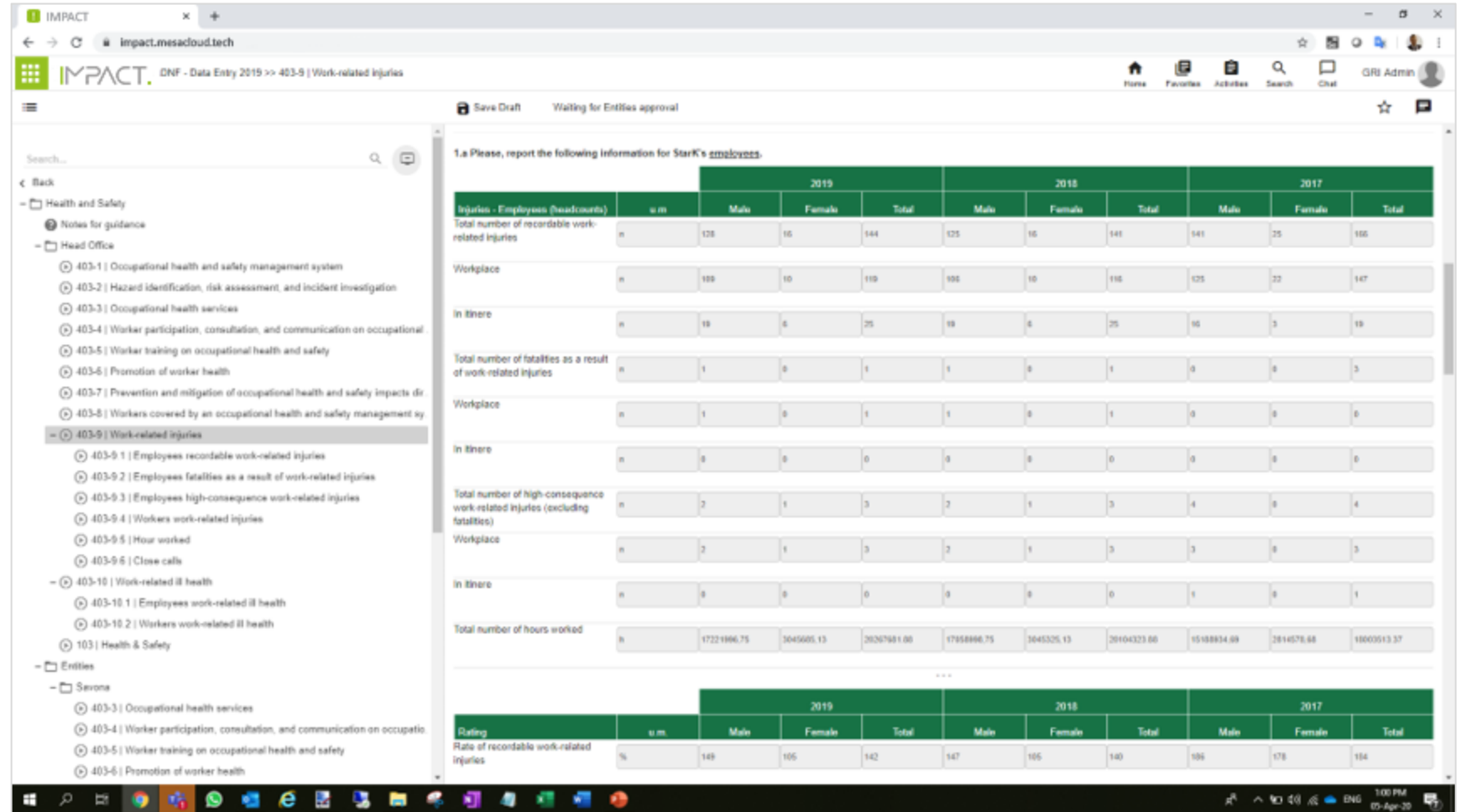
- the process is **centrally managed**: you can assign responsibilities and deadlines for each piece of information, and check on their progress;
- **audit** activity is made **simple and transparent**;
- collecting information pursuant to from the different organizational units becomes **simple and needs no rework**.



# Sustainability Reporting

All data are delivered to the correct users in a really simple web based solution with history data and complex control and calculated rules that can easily allow users to perform a correct data entry.

All data are validated through a personalized and dynamic authorization workflow.



The screenshot displays the IMPACT web application interface. The browser address bar shows 'Impact.mesadoud.tech'. The page title is 'IMPACT. DNF - Data Entry 2019 >> 403-9 | Work-related injuries'. The interface includes a navigation menu on the left with categories like 'Health and Safety', 'Head Office', and 'Entities'. The main content area shows a data entry form for 'StarK's employees' with the instruction '1.a Please, report the following information for StarK's employees.' The form contains several tables for data entry, organized by year (2019, 2018, 2017) and gender (Male, Female, Total). The tables include data for 'Injuries - Employees (headcounts)', 'Total number of recordable work-related injuries', 'Workplace', 'In itinere', 'Total number of fatalities as a result of work-related injuries', 'Workplace', 'In itinere', 'Total number of high-consequence work-related injuries (excluding fatalities)', 'Workplace', 'In itinere', 'Total number of hours worked', and 'Rate of recordable work-related injuries'.

Injuries - Employees (headcounts)	u.m.	2019			2018			2017		
		Male	Female	Total	Male	Female	Total	Male	Female	Total
Total number of recordable work-related injuries	n	128	16	144	125	16	141	141	25	166
Workplace	n	109	10	119	106	10	116	125	22	147
In itinere	n	19	6	25	19	6	25	16	3	19
Total number of fatalities as a result of work-related injuries	n	1	0	1	1	0	1	0	0	0
Workplace	n	1	0	1	1	0	1	0	0	0
In itinere	n	0	0	0	0	0	0	0	0	0
Total number of high-consequence work-related injuries (excluding fatalities)	n	2	1	3	2	1	3	4	0	4
Workplace	n	2	1	3	2	1	3	3	0	3
In itinere	n	0	0	0	0	0	0	1	0	1
Total number of hours worked	n	17221996.75	3045605.13	20267601.88	17858996.75	3045325.13	20904321.88	15188934.09	2814578.88	18003913.97

Rate of recordable work-related injuries	u.m.	2019			2018			2017		
		Male	Female	Total	Male	Female	Total	Male	Female	Total
Rate of recordable work-related injuries	%	149	105	142	147	105	140	105	175	184



# Sustainability Reporting

The reporting system allows every organizational unit to analyze indicators in a multidimensional way by company, category, time and all the other sustainability dimensions.

IMPACT DNF - Data Entry 2019 >> Human Resources and Organization

### HRO Training hours breakdown report

	2017	2018	2019
<b>Total training hours by employee category and gender</b>	<b>195,355.00</b>	<b>240,704.43</b>	<b>462,713.00</b>
Blue collars direct + indirect workers	84,473.00	125,535.20	251,071.20
Managers executives + managers	15,736.00	15,716.43	12,736.20
White collars	95,146.00	99,452.80	198,905.60
<b>Total</b>	<b>195,355.00</b>	<b>240,704.43</b>	<b>462,713.00</b>

	2017	2018	2019
<b>Number of training hours by training area</b>	<b>195,356.00</b>	<b>240,705.10</b>	<b>240,705.10</b>
Code of Ethics & Compliance 231	6,398.00	4,142.50	4,142.50
Environmental management	7,368.00	5,996.50	5,996.50
Health & Safety training	39,771.00	46,468.80	46,468.80
Linguistic training	21,522.00	28,028.30	28,028.30
Managerial training	24,065.00	27,616.10	27,616.10
Other	2,796.00	2,087.50	2,087.50
Product/Process quality management/improvement	48,155.00	50,764.30	50,764.30
Professional training	45,281.00	75,601.10	75,601.10
<b>Total</b>	<b>195,356.00</b>	<b>240,705.10</b>	<b>240,705.10</b>

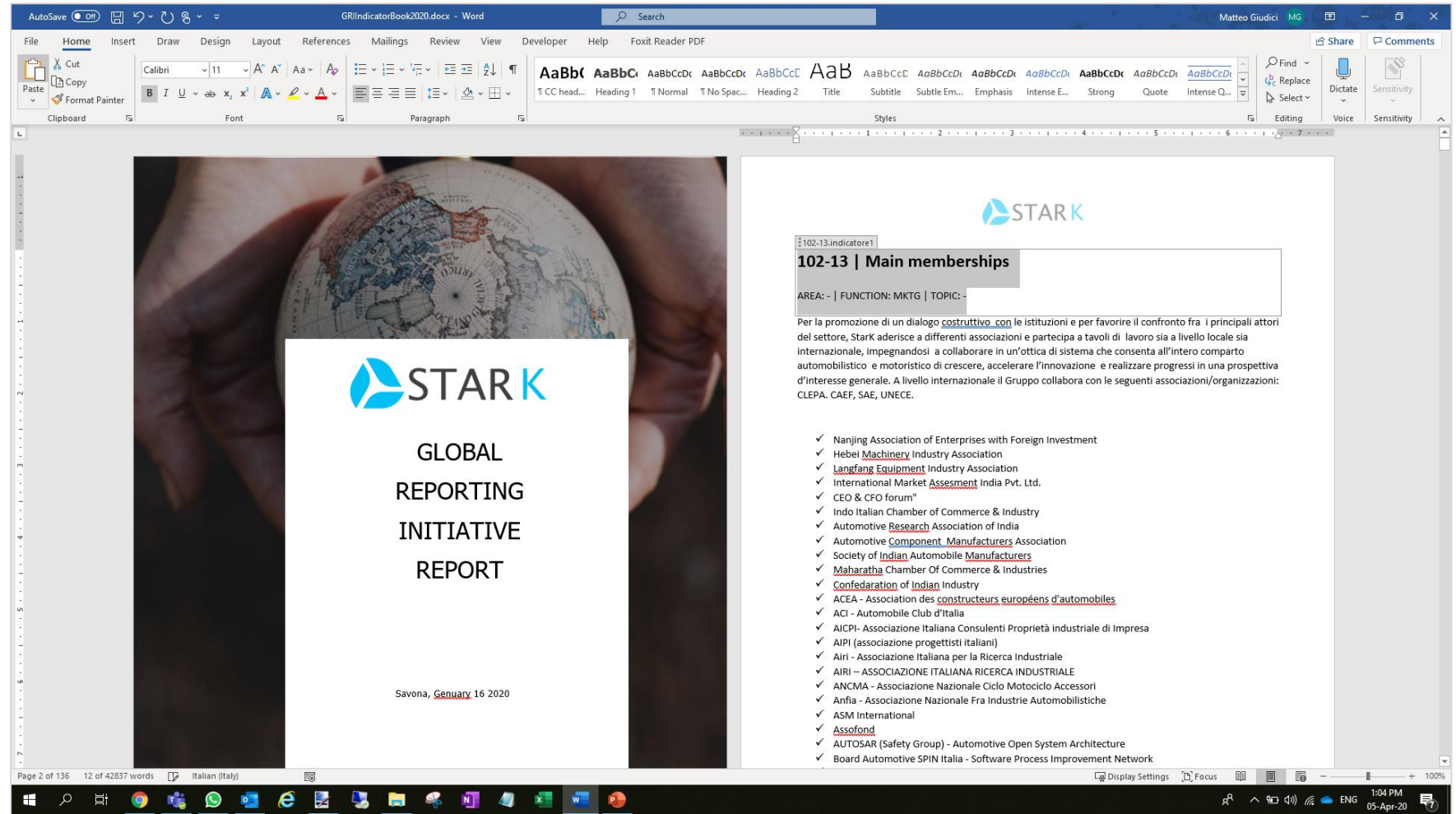
  

	2017	2018	2019
<b>Mode of training delivery</b>	<b>195,127.00</b>	<b>240,704.80</b>	<b>481,409.80</b>
Classroom learning hours	188,102.00	235,388.80	470,777.80
eLearning training hours	7,025.00	5,316.00	10,632.00
<b>Total</b>	<b>195,127.00</b>	<b>240,704.80</b>	<b>481,409.80</b>

# Sustainability Reporting

Thanks to Smart Document technology our tool allow you to dynamically **integrate** and collect data directly into the **final document**, dividing its parts among the different business players.

Our platform is GRI certified.



# The journey to NET ZERO

## Microsoft Cloud4Sustainability integration



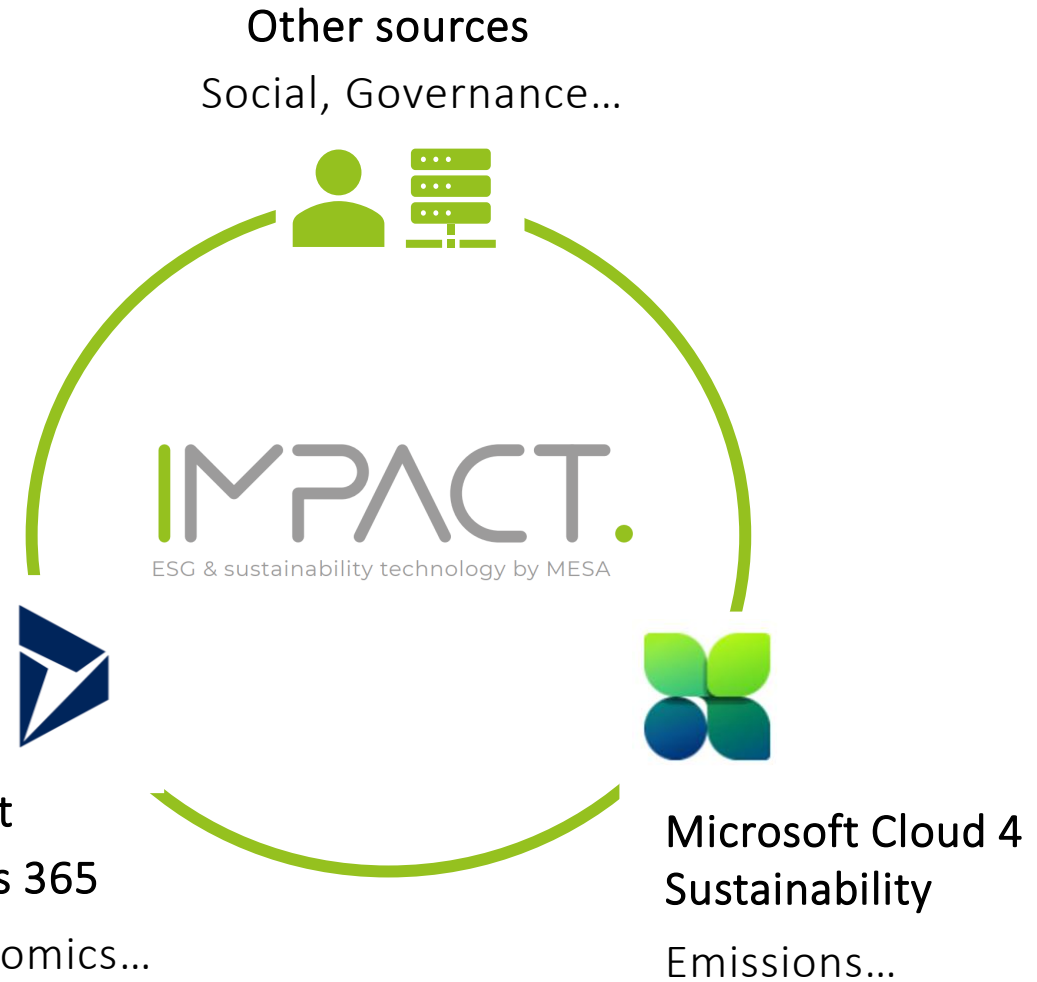
Connect data to more accurately represent the emissions footprint of your operation and value chain.



Visualize and report your environmental impact and sustainability progress in near real time.



Learn how to advance your efforts to reduce emissions, gain efficiencies, and make lasting changes.



# WHY CHOOSE IMPACT. OUR UNIQUE SELLING PROPOSITION



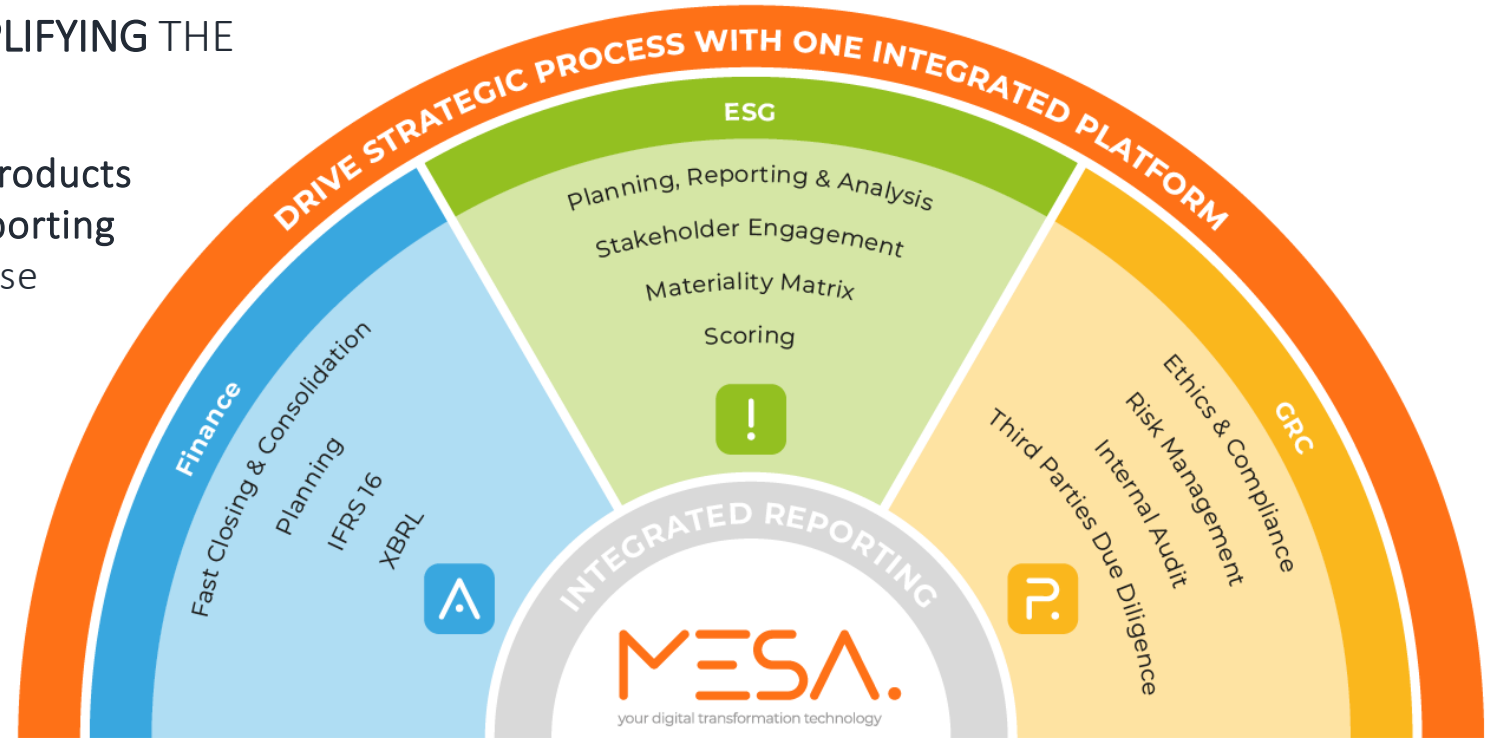
- ✓ 360° vision of the processes related to the theme of sustainability.
- ✓ Credibility of CUSTOMERS and solidity of the basic PLATFORM (no add-in required).
- ✓ GRI certified in English and Italian.
- ✓ A single platform supporting the entire CSR process that guides the user step-by-step.
- ✓ Natively interconnected modules.
- ✓ IMPACT is based on the MESA digital transformation platform.

# MESA INTEGRATED PLATFORM

GOVERNING STRATEGIC PROCESSES AND SIMPLIFYING THE PRODUCTION OF INTEGRATED REPORTING.

An integrated platform made up of **specialized products** that share the **convergence of regulatory and reporting obligations** based on easy-to-use and ready-to-use technologies.

MESA automates processes by combining a **BPM engine with intelligent algorithms integrating technologies** for collaborative production of reports **and in a single low code solution** integrated with Microsoft Teams, Office and PowerPlatform technologies.



Manages **finance** team processes and performance.



Corporate **sustainability** by respecting important international global standards.



The integrated management of **Governance Risk & Compliance**.

# SOME CLIENTS





# IMPACT.

ESG & sustainability technology by MESA

*[impact.mesacloud.tech](https://impact.mesacloud.tech)*

**Headquarter - sede legale**

Campus Universitario

Via Magliotto 2

17100 Savona (SV) - Italy

**General Inquiries**

Phone: +39 019 861818

Email: [info@mesacloud.tech](mailto:info@mesacloud.tech)



**SOFTWARE & TOOLS  
PARTNER**

**2022**

ISO 27001

**BUREAU VERITAS  
Certification**



UNI PDR 125

**BUREAU VERITAS  
Certification**

