


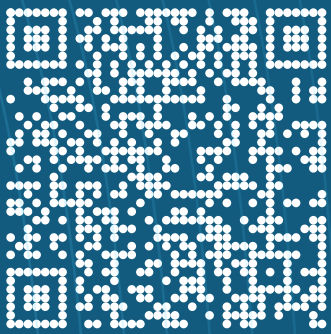
Business Intelligence Portal

 metricinsights.com

 info@metricinsights.com

 1-800-933-3467

 44 Tehama Street
San Francisco, CA 94105



The Challenge

BI environments are becoming more complex, fragmented, and cluttered with content.

BI teams are drowning in an ever-increasing number of requests for new reports and dashboards, despite the wealth of content already available. They often have no way of governing the critical content with which users should engage.

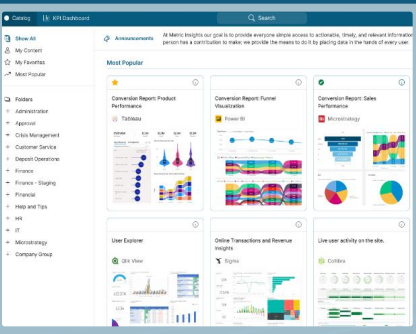
Business users are overwhelmed with the amount of content to which they have access, lack trust in the data, and are not engaging with the reports and dashboards that already exist.

The Solution

Metric Insights' Enterprise Business Intelligence Portal gives organizations a better way to govern and consume BI.

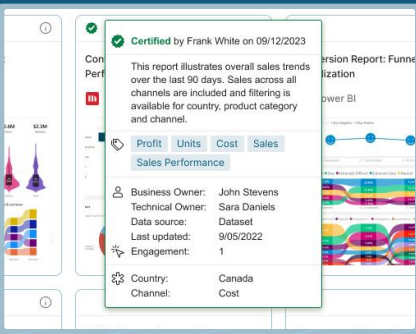
Centralized Catalog

Publish and organize all critical reports and dashboards into a searchable and secure catalog.



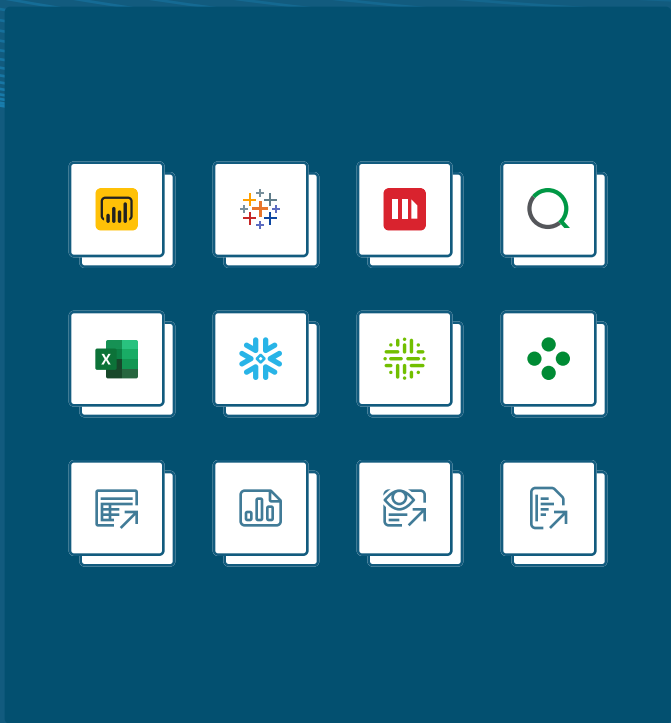
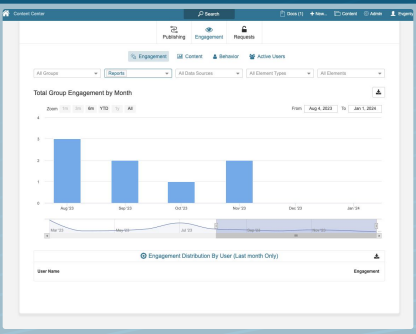
BI Governance

Categorize, tag, and certify assets so that users have the full context behind reports and know what they can trust.



Usage Statistics

Track usage and capture feedback to ensure that the portal always contains up-to-date and relevant content.



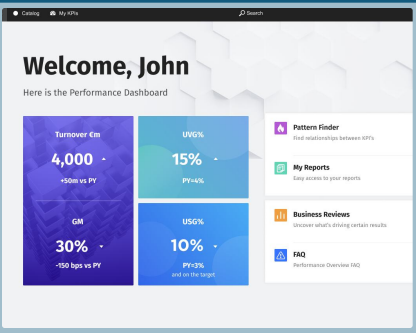
The Result

BI teams have a way of governing their BI platforms, reducing the time spent on redundant requests for reports, and maximizing utilization of BI content and licenses.

Business users have easy access to BI they can trust, and can easily search for content that is relevant to them.

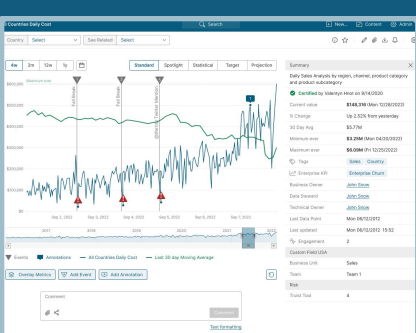
Persona-Optimized UI

Customize and brand portal experiences for each persona, enabling users to easily navigate and consume their content.



Distribution & Alerting

Alert users to critical changes in their metrics and push timely reports and dashboards to them via email, mobile, and collaboration tools.



Mobile

Create customized Mobile experiences for each persona; native iOS and Android apps ensure users can access their BI content on the go.

