



Microsoft 365

A comprehensive Modern Workplace

A guide for the organizations
looking for a transformation

Presented by
Ritesh K. Dubey

Points to Discuss

01

Overview

02

Productivity
Features

03

Security and
Management

04

Benefits

05

Uses Cases

06

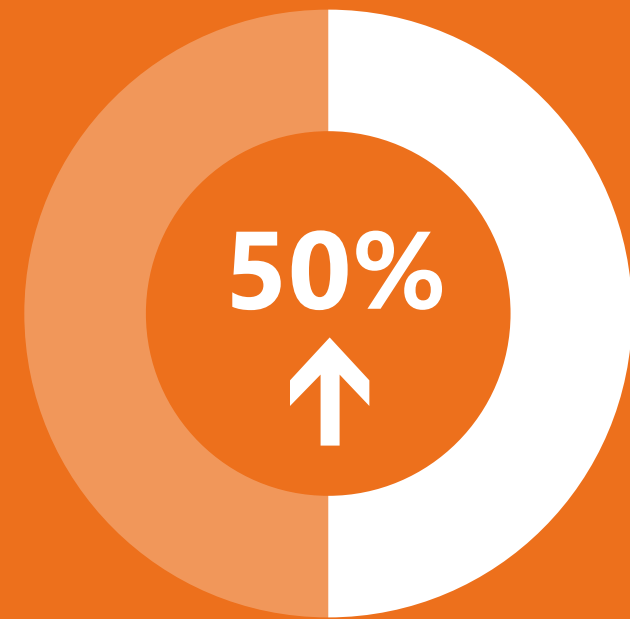
Next Steps

01

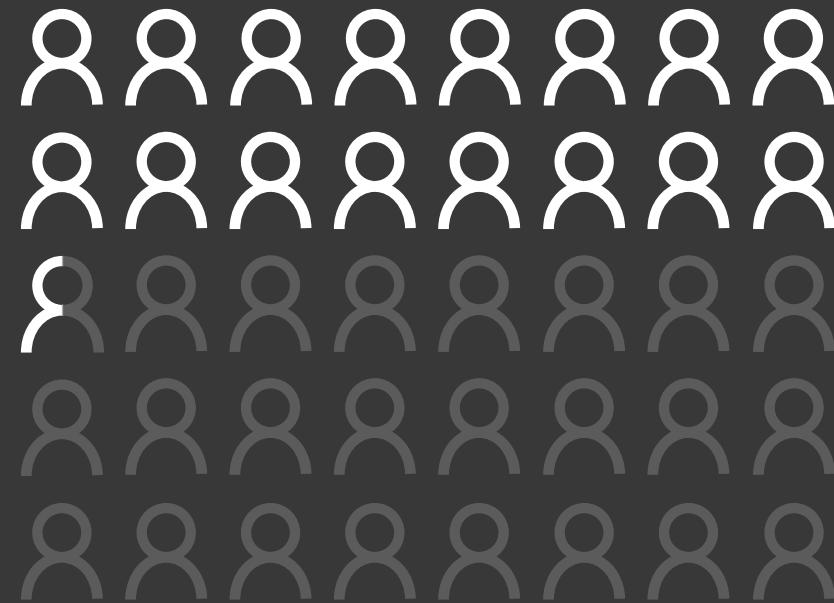
An Overview

Let's have a look at what 'Microsoft 365 Workplace Solution' comprised of.

The reality of SMB today



50% more time in collaborative activities¹



37% of the global workforce is mobile²



43% of cyber-attacks target small business³

¹ Harvard Business Review, ['Collaborative Overload'](#)

² Strategic Analytics, [Global Mobile Workforce Forecast, 2015-2020](#),

³ Small Business Trends, [CYBER SECURITY STATISTICS – Numbers Small Businesses Need to Know](#)

One solution,
designed for your
business



Achieve more together



Anywhere it matters

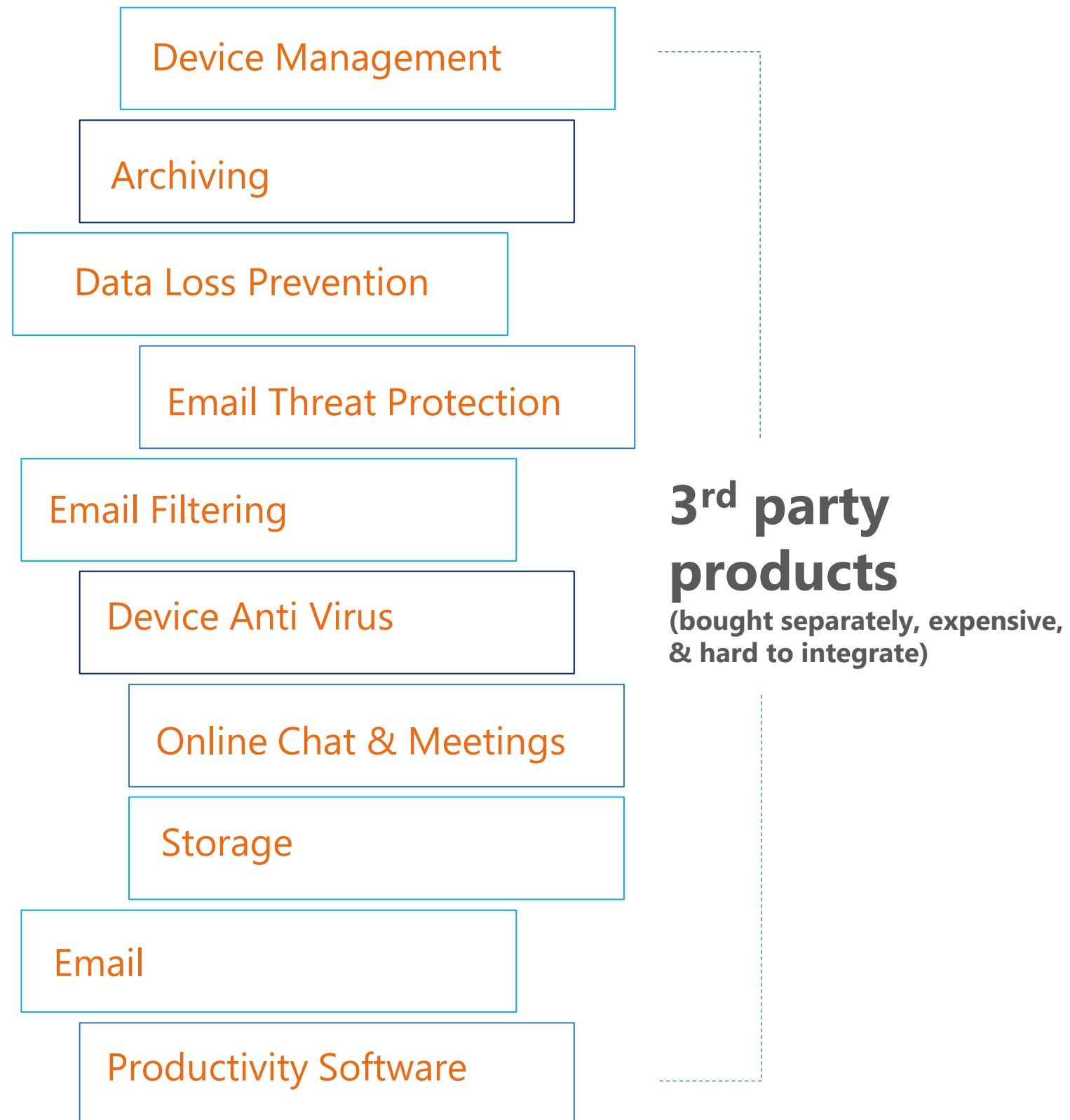


Always-on security



Simplified for business

Microsoft 365 Business Premium: One subscription for Productivity + Security + Device Management



\$20 PER USER/MONTH



Microsoft 365
(comprehensive and integrated)

What is Microsoft 365 Business Premium?

An integrated solution bringing together best-in-class productivity tools, security and device management

A holistic set of business productivity and collaboration tools

- Word, Excel, PowerPoint, Outlook, OneNote, Publisher, and Access
- Exchange, OneDrive, Skype, Teams, SharePoint
- Business apps from Office (Bookings, Outlook Customer Manager, MileIQ¹, Listings¹, Connections¹, Invoicing¹)

Enterprise-grade device management and security capabilities

- App protection for Office mobile apps
- Device management for Windows 10 PCs
- Consistent security configuration across devices
- Protection of company data across devices
- Windows Defender, always-on and up-to-date

Simplified device deployment and user setup

- Single admin console to setup and manage users and devices
- Auto-installation of Office apps on Windows 10 PCs
- Always up-to-date Office + Windows 10
- Streamlined deployment of PCs with Windows AutoPilot

{1} Available in US, UK, and CA



**An incredibly
rich set of
PRODUCTIVITY
FEATURES**

02



Email, schedule, meet, and chat

Stay connected and in sync with co-workers and customers wherever you are via email, phone, online meetings, and IM.

Get professional looking email powered by **Microsoft Exchange** to facilitate collaboration to keep you in sync with your customers and coworkers, 24/7.

Add audio/video conferencing to a new or existing meeting with just one click using **Outlook** with **Teams** integration.

Use **Office 365 Groups** to give your teammates access to a shared inbox, calendar, file repository, and notebook.

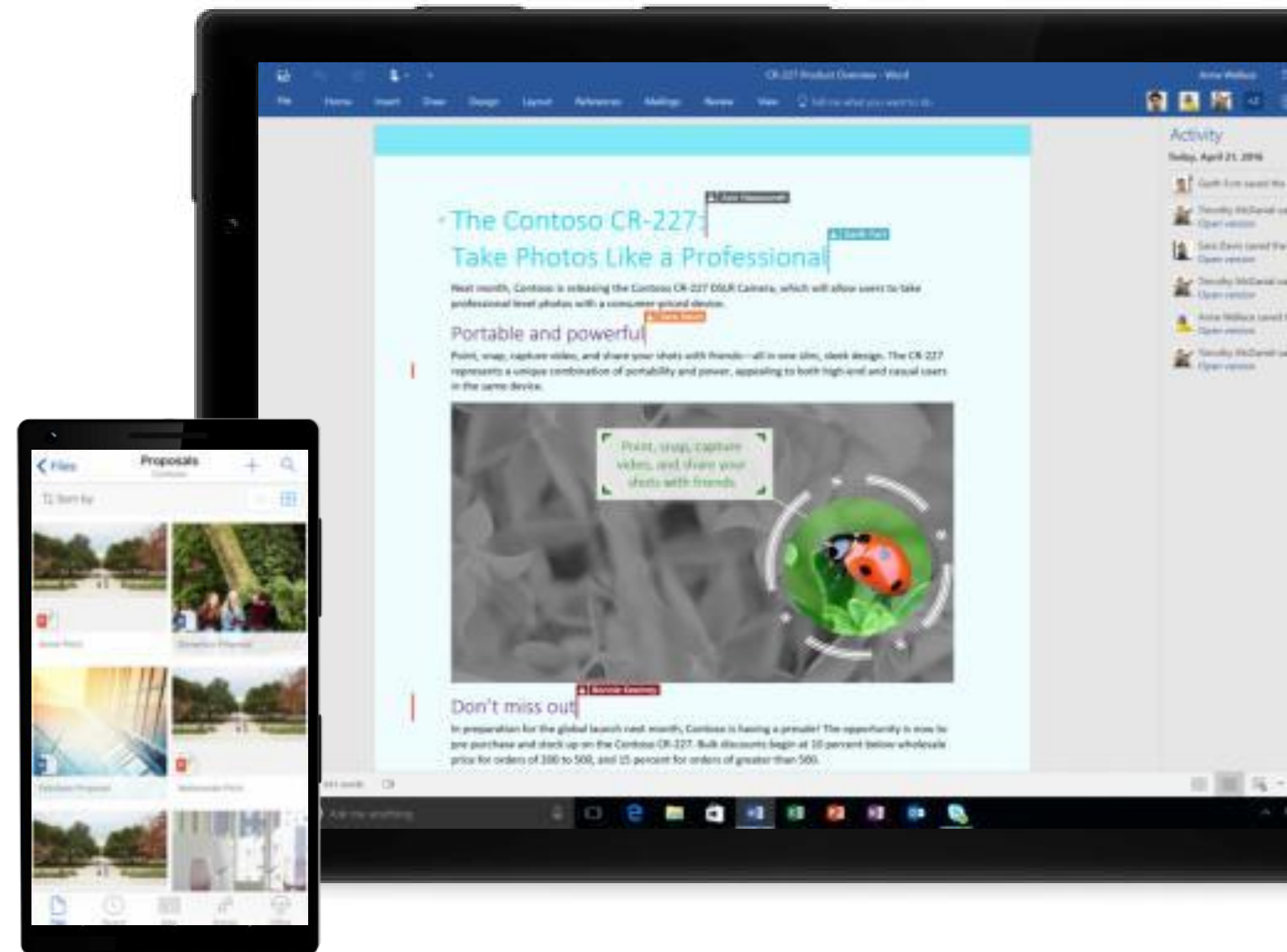


Create and collaborate

Create, share, and co-author **Word documents, Excel spreadsheets, and PowerPoint presentations** with coworkers.

Get access to the latest version of your documents from your favorite devices, anywhere you have an internet connection. **OneDrive for Business** enables online and offline access and automatic syncing of files to reflect the most recent edits.

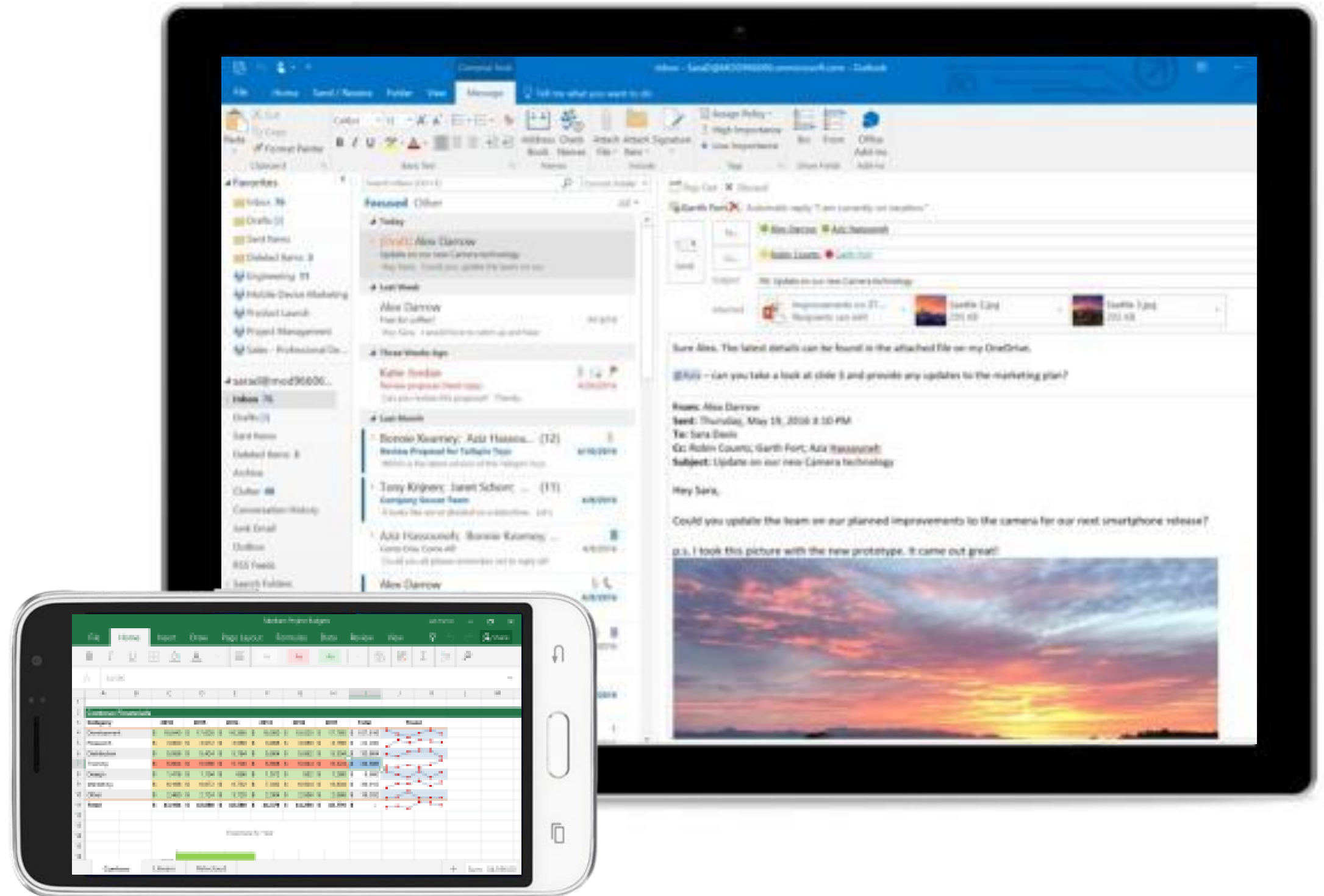
SharePoint is an easy drag and drop intranet for documents and files.



Stay productive on the go

Use the best-in-class productivity tools so you can work across all of your favorite devices (including Windows, Mac, iOS, and Android).

Use **OneDrive for Business** to create, access, and edit your documents whenever you need them.



Sync files automatically and work offline

Use familiar tools you know and love, including **Word**, **PowerPoint**, and **Excel**.

Create, share, and edit Word, Excel, PowerPoint documents any time, anywhere.

Access and edit documents offline; when you're back online updated files sync automatically. Pick up where you left off on your document when switching devices.





Advanced SECURITY & MANAGEMENT FEATURES

03

'Identity Management'

How much control do you have over access?



Notable Feature 1

- A. Simplified access management and security
- B. Multi-factor authentication for better Security
- C. Conditional access for location-based accessibility
- D. Self Service Password Reset for more autonomy to users

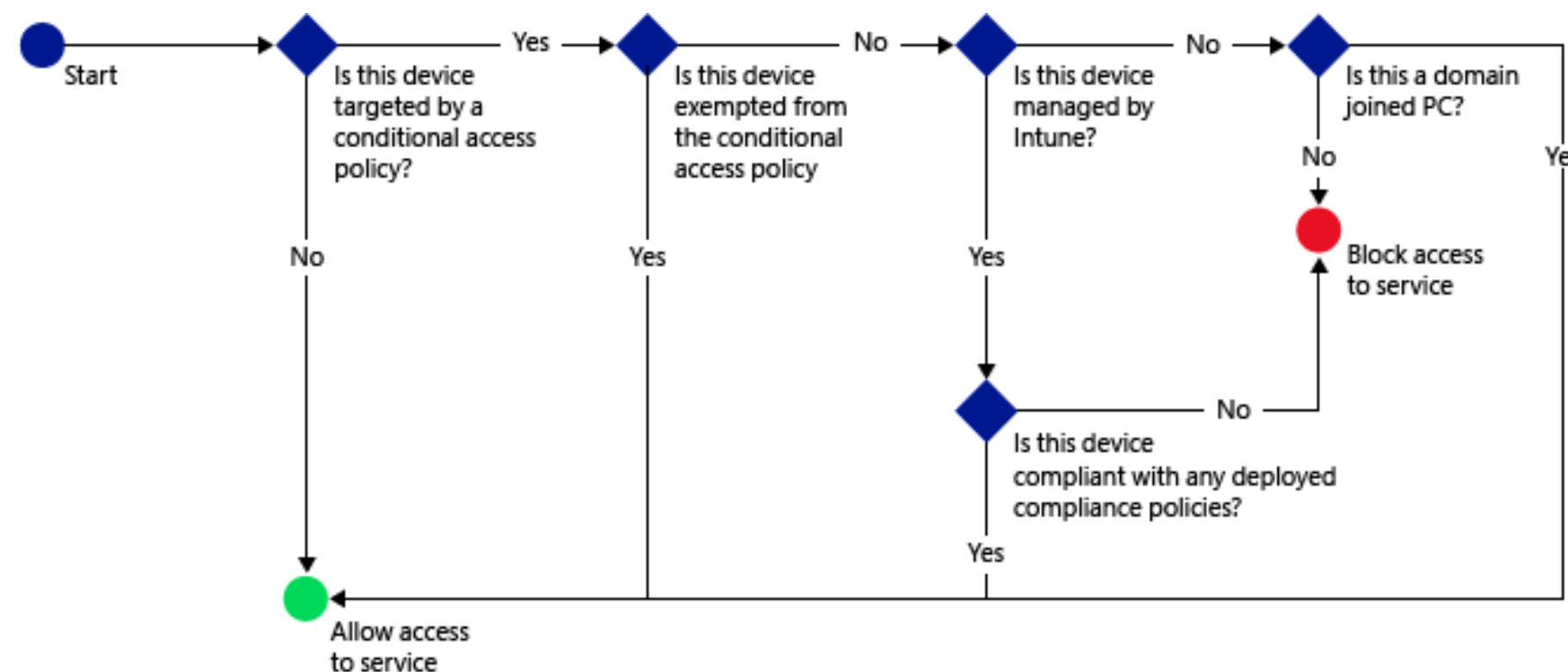
1



Conditional Access

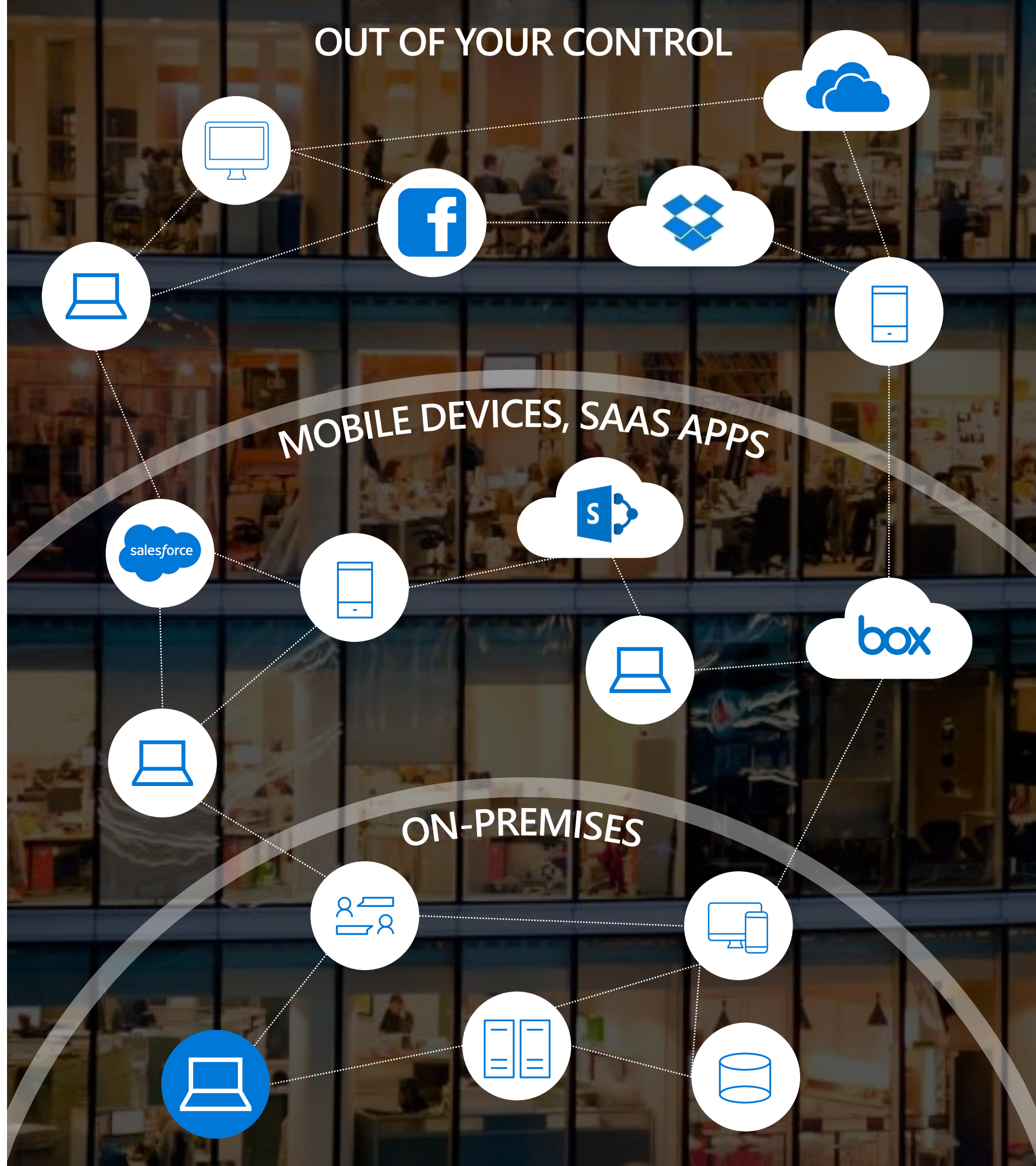


- Keep sensitive data protected by limiting user access based on geo-location or IP address with location-based policies
- Ensure only enrolled and approved devices can access corporate data with device-based conditional access
- Proactively reduce the risk in your environment with policies to prevent identity attacks before they take hold



'Information Protection'

How much control do you have over data?



Protect business data



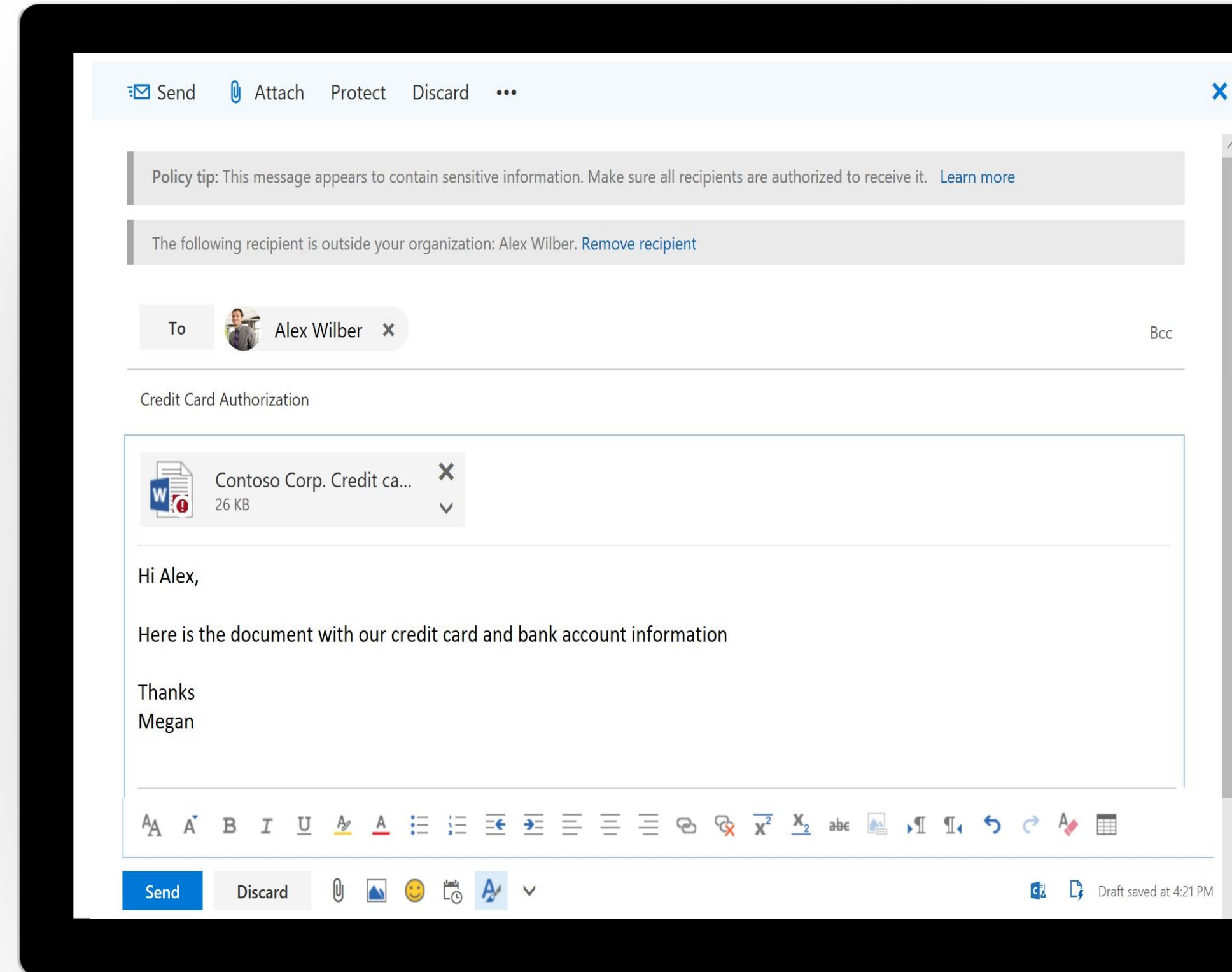
Control who has access to sensitive information

Encrypt **sensitive emails**

Block sharing of sensitive information like credit card numbers

Restrict copying and saving of confidential business information

Enable **unlimited cloud archiving**

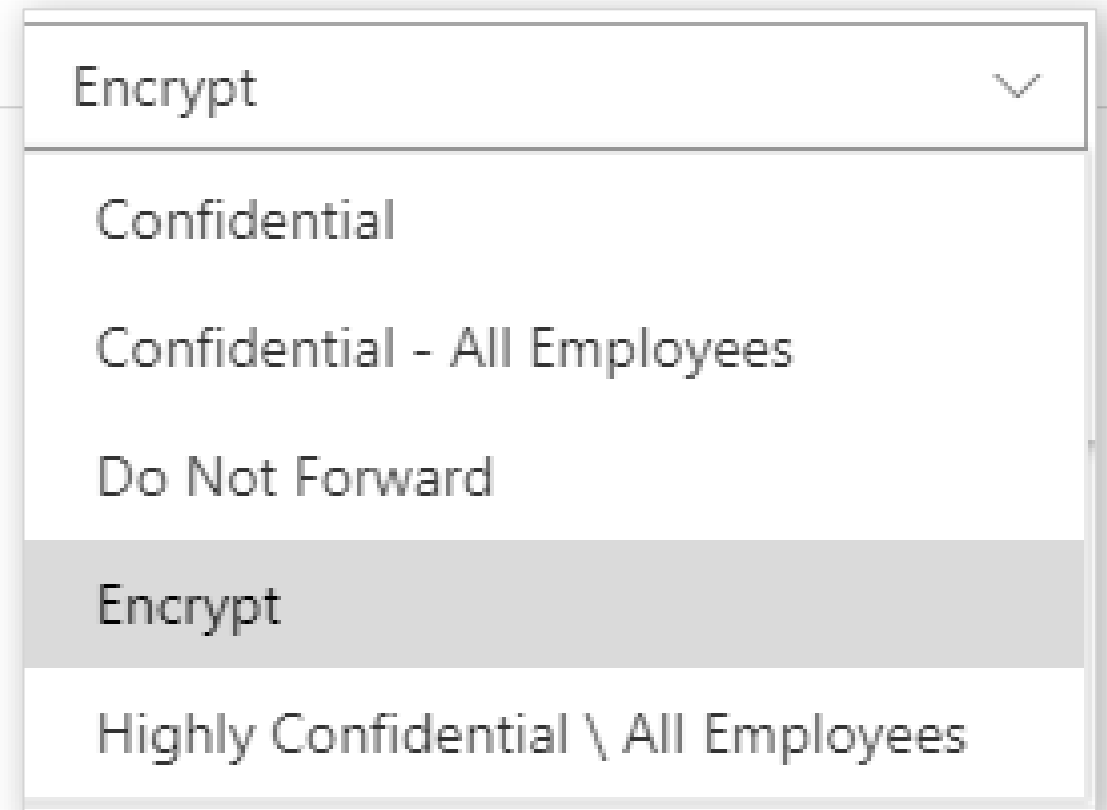
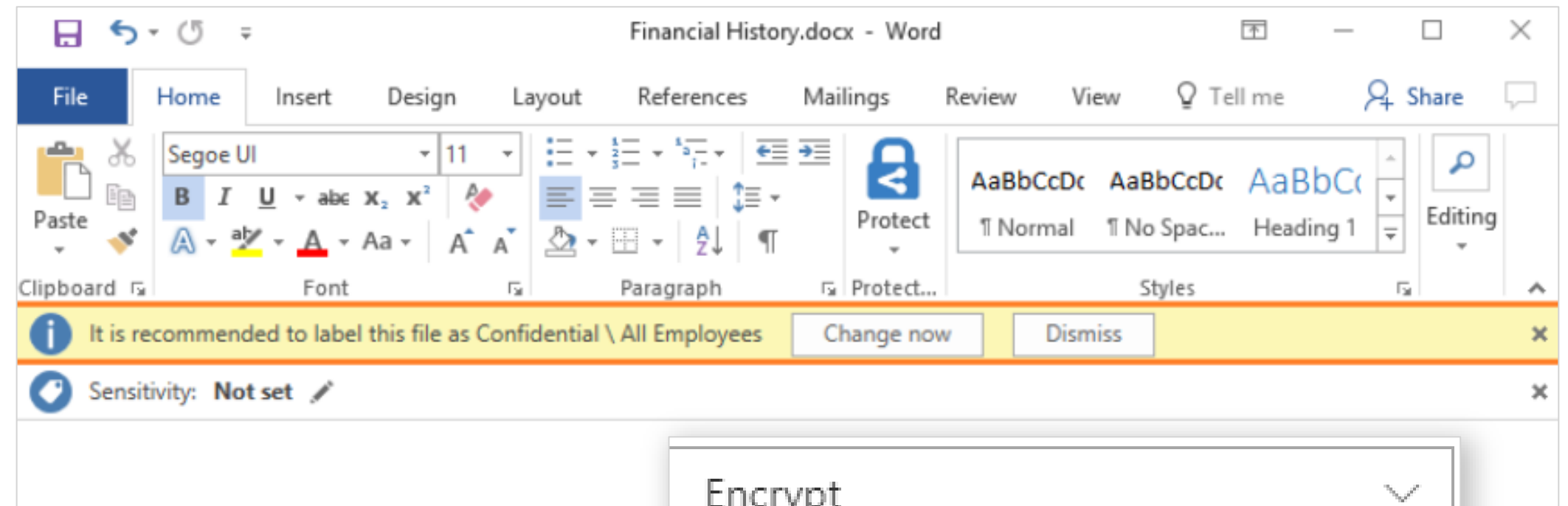


Azure Information Protection (AIP)

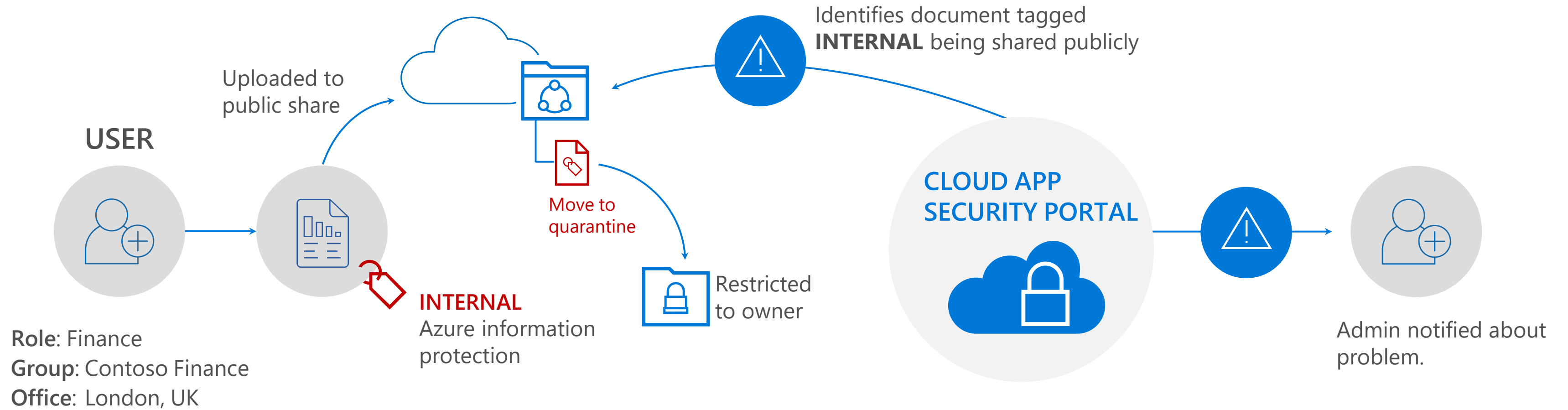
What it is:

Azure Information Protection helps an organization to classify protect its documents and emails, either by restricting the ability to forward and print, or by applying labels.

The restrictions and protections stay with the files and emails regardless of the location. Even if the file is emailed outside the company, or saved to an employee's personal computer, you remain in control of your data.



I want to protect and control data in cloud apps



Notable Feature 2

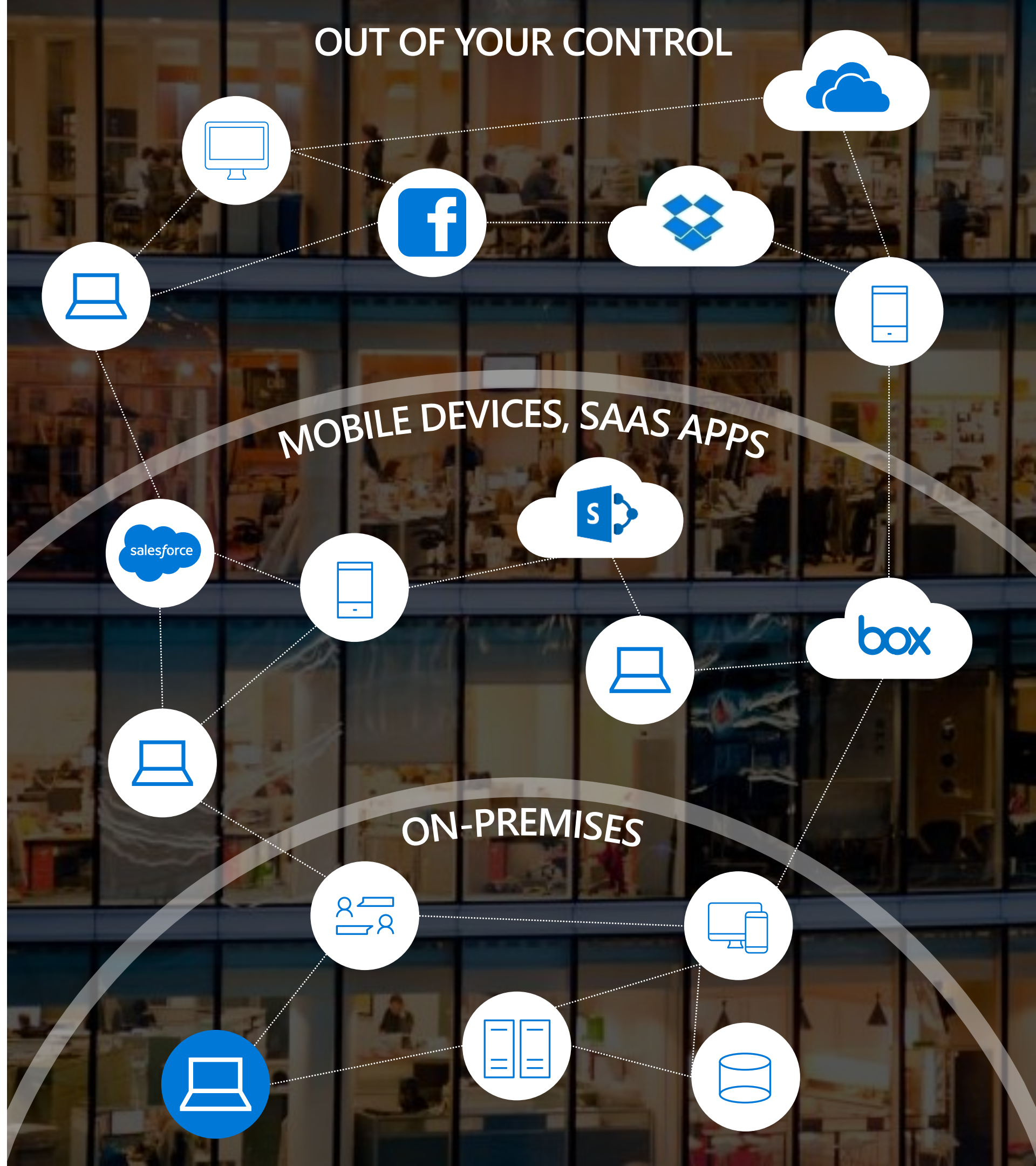
- A. Protect emails to View only rights and cannot print/forward
- B. Restrict users to send email outside organization
- C. Protect documents to view only or set expiry
- D. Encrypt emails and documents to keep them protected at rest
- E. Enable secure internal and external file sharing with labeling and tracking

2



'Device and Application Management'

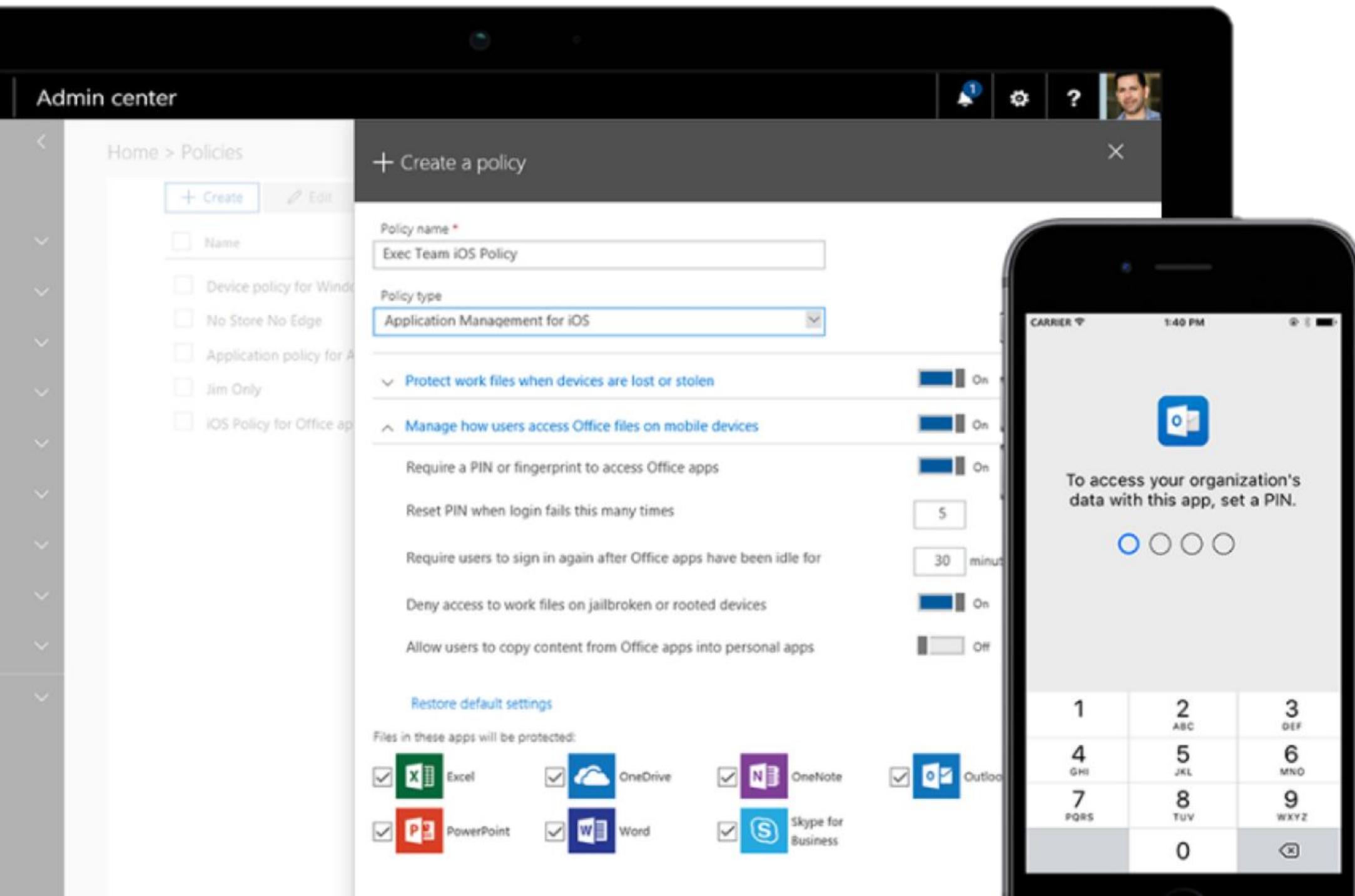
How much control do you have over devices?





Easily secure and manage your devices

Manage the security of the devices that access your business information



Control which devices and users can access business information

Apply security policies to **protect data** on iOS and Android devices

Keep company data **within approved apps** on mobile devices

Remove business data from **lost or stolen devices** with selective wipe

Support for **Windows Virtual Desktop**

Notable Feature 3

- A. Password secured client devices
- B. Backup organization data on mobile devices
- C. Total control over company data movement
- D. Restrict Copy, Paste, Screenshot of company data
- E. PIN Based security for company Apps
- F. Restrict the use of company data or apps on jail-broken devices
- G. Remotely wipe complete organization data from stolen or decommissioned devices

3



'Identity-Driven Security'

How quickly are you able to detect attacks?





Defend against threats

Protect against phishing, ransomware, malware, and other advanced threats

Check links **at time of click** to combat advanced phishing

Detect malware **with sandbox analysis** of email attachments

Enable anti-phishing policies **that use machine learning**

Enable **advanced multi-factor authentication** and **Conditional Access**

Enforce features that help protect **Windows 10 devices**



This website is classified as malicious.

Opening this website might not be safe.

`www.unsafe_url/login.php`

We recommend that you don't open this website, as opening it might not be safe and could harm your computer or result in malicious use of your personal data.

X Close this page

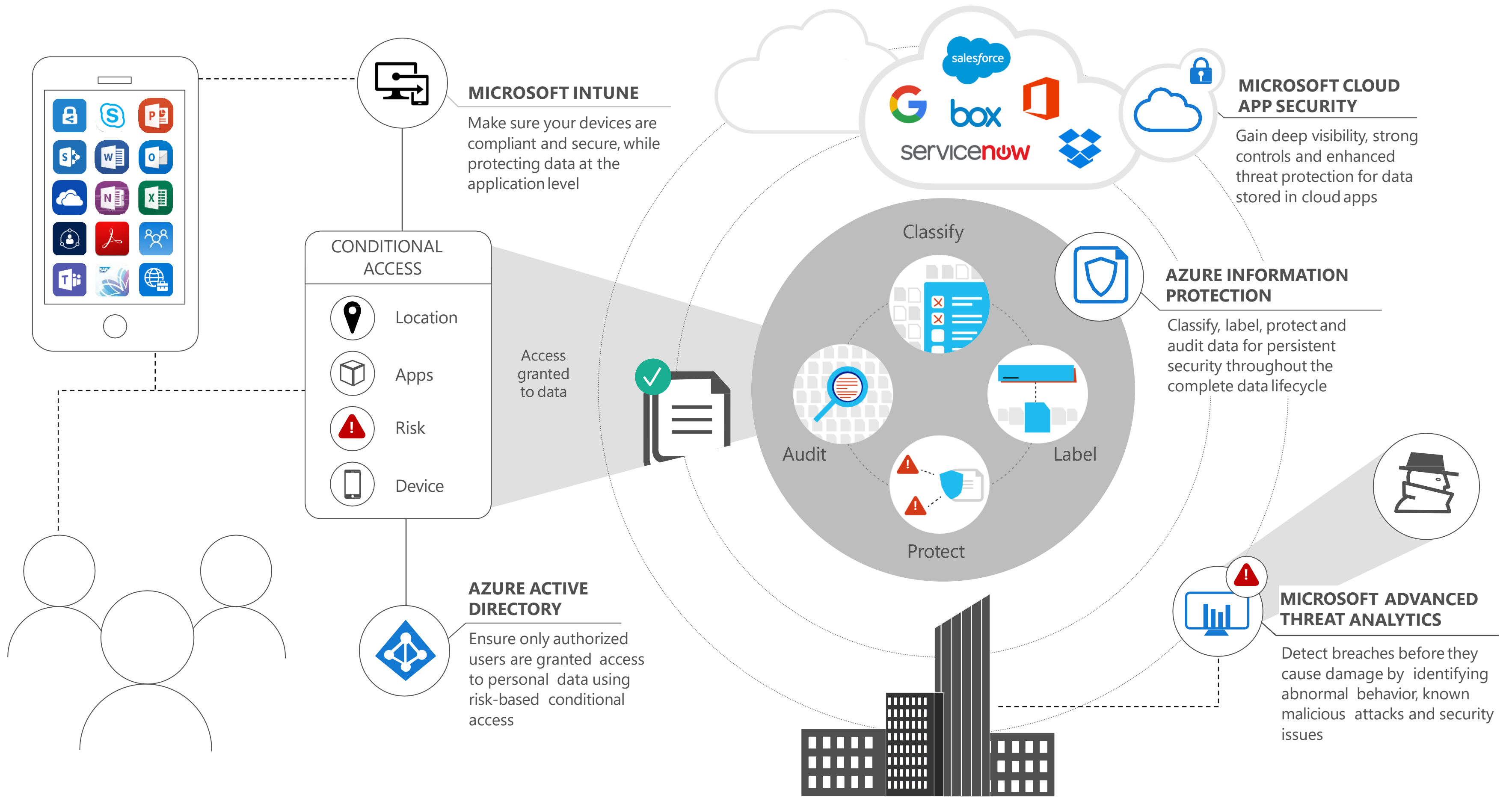
[Continue anyway \(not recommended\)](#)

Powered by [Office 365 Advanced Threat Protection](#)

Notable Feature 4

- A. Analyse and Protect against threat with Azure Threat Analytics
- B. Detect any abnormal behaviour by creating user behaviour profile and detecting actions, such as:
 - I. Anomalous logins
 - II. Unknown threats
 - III. Password sharing
 - IV. Lateral movement
 - V. Modification of sensitive groups
- C. Detect security issues and risks, such as:
 - I. Broken trust
 - II. Weak protocols
 - III. Known protocol vulnerabilities



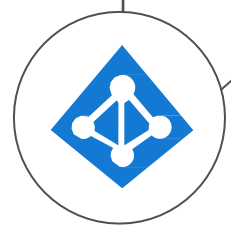


MICROSOFT INTUNE
Make sure your devices are compliant and secure, while protecting data at the application level

CONDITIONAL ACCESS

- Location
- Apps
- Risk
- Device

Access granted to data



AZURE ACTIVE DIRECTORY
Ensure only authorized users are granted access to personal data using risk-based conditional access



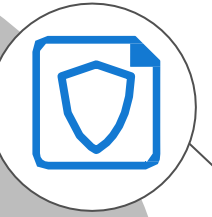
MICROSOFT CLOUD APP SECURITY
Gain deep visibility, strong controls and enhanced threat protection for data stored in cloud apps

Classify

Audit

Protect

Label



AZURE INFORMATION PROTECTION
Classify, label, protect and audit data for persistent security throughout the complete data lifecycle



MICROSOFT ADVANCED THREAT ANALYTICS
Detect breaches before they cause damage by identifying abnormal behavior, known malicious attacks and security issues

Benefits

03

A quick glance over the multitude of benefits that M365 brings forth.



Create and Collaborate

Create, share, and co-author Word documents, Excel spreadsheets, and PowerPoint presentations with co-workers.



Email and Chat

Stay connected with customers and co-workers wherever you are via email, phone, online meetings, with audio/video conferencing capabilities.



Stay productive on the go

Access and edit documents offline that syncs automatically. Pick up where you left off on your file when switching devices.



Your work on Cloud

Make the best of cloud storage to save, share and pick up your work from anywhere and any device.



Cloud document library & Intranet

Central reservoir for all your organization's content, a fully configurable Intranet to be in sync with your company across departments and geographies.



Device and App Management

Centrally manage all your organization device, application and data. Push updates or encrypt data and much more with one click.



Protection against cyberthreats

Advanced protection against malware, viruses, phishing attempts, malicious links, and other threats.



Upgrade your Windows

Upgrade to Windows 10 Pro from Windows 7 Pro or 8.1 Pro for free along with multi-session windows capability for the virtual desktop.

Use Cases

04

Know the practical uses of a practical solution.

HOW IT HELPS

Real World Functions

Work from Home

We are becoming more and more mobile in our working style. Unlike before, we no longer have to be present on the office premises to get to work or to deliver the given assignments. With the increasing popularity of working from home, users need one solution that can enable them to be productive and collaborative anywhere.

Work on any Device

Depending on a single device to get the work done creates a lot of liability. In any event where the accessibility to the device is disrupted our working gets disrupted in turn. Microsoft 365 easily solves that problem by keeping your work online and accessible with complete security from any device. Just login on any device using your credentials and you are all set with all the required tools.

Undisrupted work continuity

There have been numerous incidents wherein we or one of our teammates could not work for reasons not attributed to him or her such as the device being stolen, physically damaged or attacked by cybercriminals. Microsoft 365 comes up as an absolute answer to all such highly probably scenarios. Getting ready to face any of these showstoppers is an investment with multifold returns.

Our Expertise + Microsoft 365 Business Premium

We're the expert in cloud deployment...

- Google to Office 365 Migration for an Export Company
- Enterprise Mobility and Security Deployment for a learning company
- Modern Workplace Deployment for a financial firm

We can help you get complete value from your investment...

- Tenant and Consumption Optimization
- User Adoption and Trainings

We can manage your workplace operations remotely, so you don't have to...

- Configuration and Change Management
- Proactive Device Management
- Account Management, Remote Support and Escalations



NEXT STEPS

01

Drafting the Proposal

02

Implementing the Modern Workplace

03

Adopting the New Workplace



THANK YOU

Let us know if you have any questions

Call today and get a solution

Phone Number

+91 11 4576 8059

Email Address

connect@mismosystems.com

Website

www.mismosystems.com