



Enabling the food system of tomorrow

Mondra empowers food retailers and suppliers to become sustainable businesses, by integrating product-level environmental insights throughout their operations and facilitating a financially successful, socially responsible, Net Zero transition.



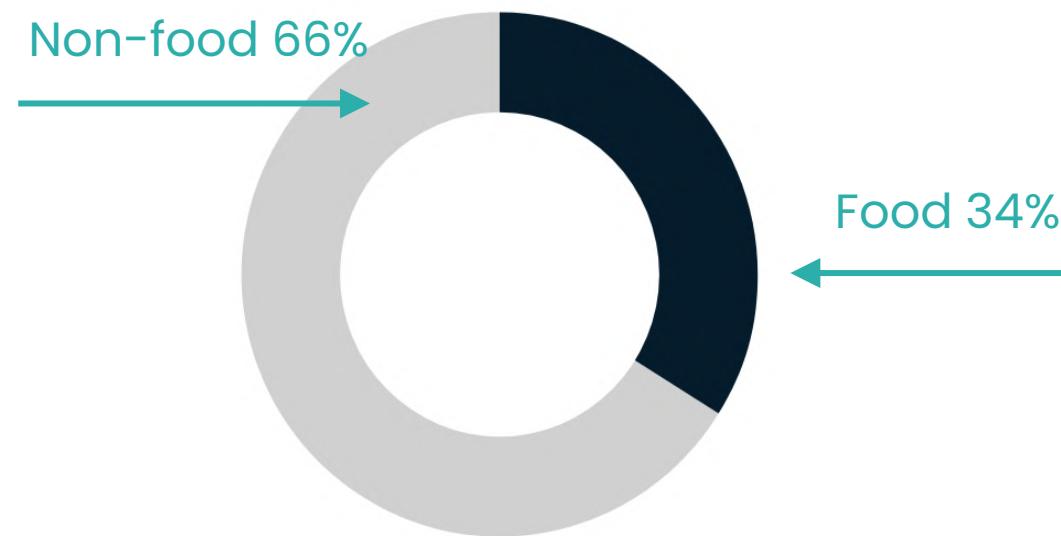


PROBLEM

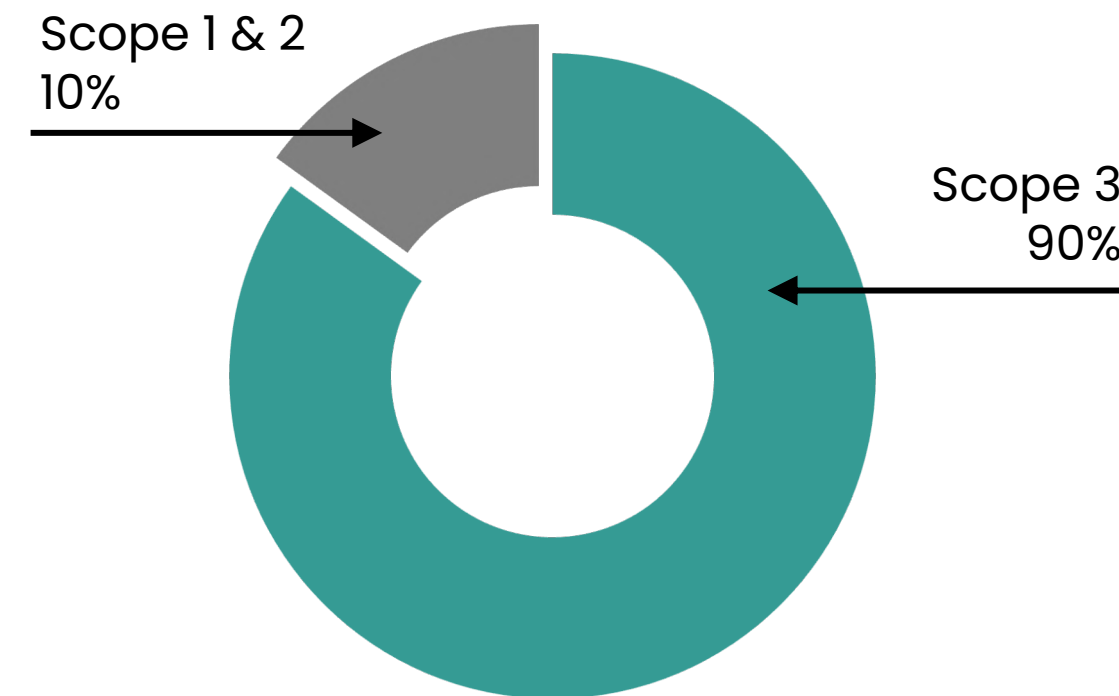
Food retailers are committed to Net Zero 2040

Scope 3 is the biggest hurdle and makes up as much as 90% of a Retailer's corporate footprint.

GHGe globally (%)



GHGe by Scope



Problem 1:
Lack of standards

Problem 2:
Lack of granular, robust data

- Reputational risk
 - Regulatory risk
 - Operational risk
- } **Financial risk**

Source: Monica Crippa et al., "Food systems are responsible for a third of global anthropogenic GHG emissions," *Nature Food*, March 2021, Volume 2, Number 3

Mondra calculates your Scope 3 emissions, delivers deep insight and give you the ability to invite your suppliers to collaborate towards Net Zero together.



SOLUTION

Digital infrastructure for collaborative supply chain decarbonization.



Mondra utilises your pre-existing data to feed its AI driven Hypermodelling engine. The result is Digital Supply Chain Twins for every one of your products. Invite your suppliers to collaborate on reduction.



1. Invite

2. Onboard + refine

3. Improve



Welcome to Mondra! 16 Aug to me

SHOPCO **mondra**

ShopCo welcomes you to Mondra!

I'm Nelli and I'll be helping you all the way the way through your journey to NetZero.

Using the compliance data stored by ShopCo we've already automatically calculated the impacts of the 12 products you supply.

- Your products range between 650g and 1.2kg CO₂ eq. per product.
- 4 of your products already meet ShopCo eco-targets!

What we ask of you:

- Sign up, take control of your data.
- Securely and privately confirm your supplier splits
- Enjoy free eco-insights and see how you can improve with Mondra

Ready to get going?

Site Energy usage & Production volume

Below you will see a list of different energy types that we believe your sites consume. Select start for each to tell us details about the energy. Connect your account if you use Manufacture 2030 to add your data automatically.

Data wizards 0/3 complete

- Electricity usage**
 - Energy Supplier
 - Renewable Energy
 - Site usage
 - Upload bill
- Mains Gas usage**
 - Mains Gas
 - Gas Supplier
 - Site usage
 - Upload bill
- Site production volumes**
 - Production volume
 - % Sites used

Chicken Salad sandwich EDP

Carbon CO ₂ eq	Water Usage eq	Water Pollution PO ₄ ³⁻ eq	Biodiversity SU
1,245g	1,245g	1,245g	1,245g

Chicken Burger (4,260 g Carbon)

T1 Ingredients	Weight	Suppliers	ES Score	Carbon (g CO ₂ eq)
Chicken	10g	3	12	15.5g
White Bread	10g	2	16	15.5g
Tomato	10g	3	74	15.5g
Lettuce	10g	1	10	15.5g
Mayo	10g	3	14	15.5g

Carbon Impacts and grade

Carbon CO₂ eq: **4,265 g** (↓ 1.2% Reduction)

Finio pita: 4,280 g

Finio Pita Copy: 4,285 g

Ingredient Carbon Impacts

Chicken Turkey	~800g
Sourdough Pita	~600g
Belavita Lettuce Gem Lettuce	~400g
Red onion relish	~200g
Wild garlic aioli	~150g
Mayo	~100g

Commercial Press (Sample)

Full Assortment

7.55 kt CO₂ eq volume

Carbon impacts

7.55 kt Projected total

2.86 kg CO₂ eq per kg product

454k SV Projected (Thousands)

LCA & ESG Metrics

- Biodiversity
- Water Pollution
- Water Usage

Data Quality Score

1.6

Poor Fair Good Very good

5.0 1.0

Time: 1.0

Geography: 1.8

Completeness: 2.0

Reliability: 2.0

Technology: 2.0

7.55 kt

CO₂ eq t

Aug Aug Aug Aug Sep Sep Sep Oct Oct Oct Nov Nov Nov

Carbon projected Sales Volume (SV) SV Projected

SOLUTION

Add your primary farm data to enhance footprints

Enhance your product footprints with real data from the farm. Mondra automatically applies it to all relevant products and re-calculates GHG Protocol compliant emissions and data quality scores.

Create Emission Factor record

Emission Factor record name: **My New EF chicken Live weight** Draft

Produce: **Chicken Live weight**

Steps: 1. Add EF data, 2. Review and publish

Emission Factor record details

Base produce selected: **Chicken Live Weight (GBR)**

Emission Factor record name: **My new EF Chicken Live Weight**

Emission factor record Description: Lorem ipsum dolor sit amet consectetur. Mauris sem tempus id quis enim interdum lacus feugiat. Tortor fringilla leo lectus congue pellentesque leo cursus imperdiet lectus. Lacus habitant diam scelerisque accumsan nunc commodo. Ut nunc sit est dui augue quam.

Emission Factor is to farm-gate: **Yes**

Emission Factor is calculated using IPCC GWP100 conversion values: **Yes**

Emission Factor includes emissions from land management and land use change: **Yes**

Product systems and calculation methods.

What is the farming technology: **Conventional**

Does this record reflect a change in farming practices: **No**

[Back to edit record](#)

Commercial Press (Sample) | Home | Analysis | Scen

Full Assortment > ... > Meat/Poultry/Other Anima... > Chicken - Prepared/Proce... > **Chicken in Spiced Yogurt**

Chicken in Spiced Yogurt ★ Enhanced | Supplier Name: **Supplier 13** | Specification ID: **CM024** | Specification Version: **4**

Impacts | Ingredients (11)

2024 Projected total **Carbon** (CO₂ eq.) | 120 MI | Projected total **Water Pollution** (PO₄-P eq. per kg) | 5.51 kl

CO₂ eq. per kg | PO₄-P eq. per kg

Data Quality Score

1.6 (Very good)

5.0 (Poor) | 1.0 (Very good)

Time: 1.8 (Good)

Geography: 1.8 (Good)

Completeness: 2.0 (Good)

Reliability: 2.0 (Good)

Technology: 2.0 (Good)

Impact Stages

Farming | Transport | Storage | Retail | In use

Farming

Agricultural inputs including fertiliser, feed and water. Per kg yield impacts to farm gate.

Farming stage impact: **89%**

Carbon Intensity Score

51

80-99 | 60-79 | 40-59 | 20-39 | 01-19

Emissions over time

(CO₂ eq.) 2024 Projected total: **93 t**

CO₂ eq. t

10 | 9.5

Contribution tree

Ingredients

Ingredients	Composition	Stages
Chicken in Spiced Yogurt	100%	
Chicken breasts, boneless	64.00%	
Chicken, slaughtered	64.00%	
Chicken (x2)	64.00%	
Chicken	55.08%	
Chicken ★ Enhanced	8.92%	
Rice flour	6.00%	
Rapeseed oil, refined (x2)	12.40%	
Chicken bone	4.42%	
Cayenne pepper extract	0.14%	
Carrot, diced, frozen	8.21%	
Yogurt	2.45%	

Composition to carbon by recipe percentage

Eased onboarding

Operationalize carbon through your full organisation.
Eased onboarding educates the non-sustainability staff.

Quick videos & tutorials support non-sustainability staff into the NetZero world

The screenshot shows the Mondra dashboard interface. At the top, there's a navigation bar with 'Shop Co.' and menu items: Home, Overview, Analysis, Scenarios, Targets. A sidebar on the left contains 'Overview', 'Suppliers', 'Data events', 'Notification', and 'Settings'. The main content area is titled 'Welcome Rob' and 'Overview'. It features a 'Welcome to Mondra' section with a video player for 'How to get started' (Part 1). To the right, there's a 'Mondra Tutorials' section with links for 'Analysis Tutorial', 'Scenario Tutorial', and 'Target Tracking Tutorial'. Below this, there are four action cards: 'Take your first steps', 'Invite your suppliers', 'Set internal Target', and 'Set Supplier target', each with an 'Invite Suppliers' or 'Set Target' button. At the bottom, there are three summary cards for 'Suppliers', 'Scenarios', and 'Data events?' with 'View' buttons.

Guided first access for Brand Owners and Suppliers

Simplified access, enterprise secured.

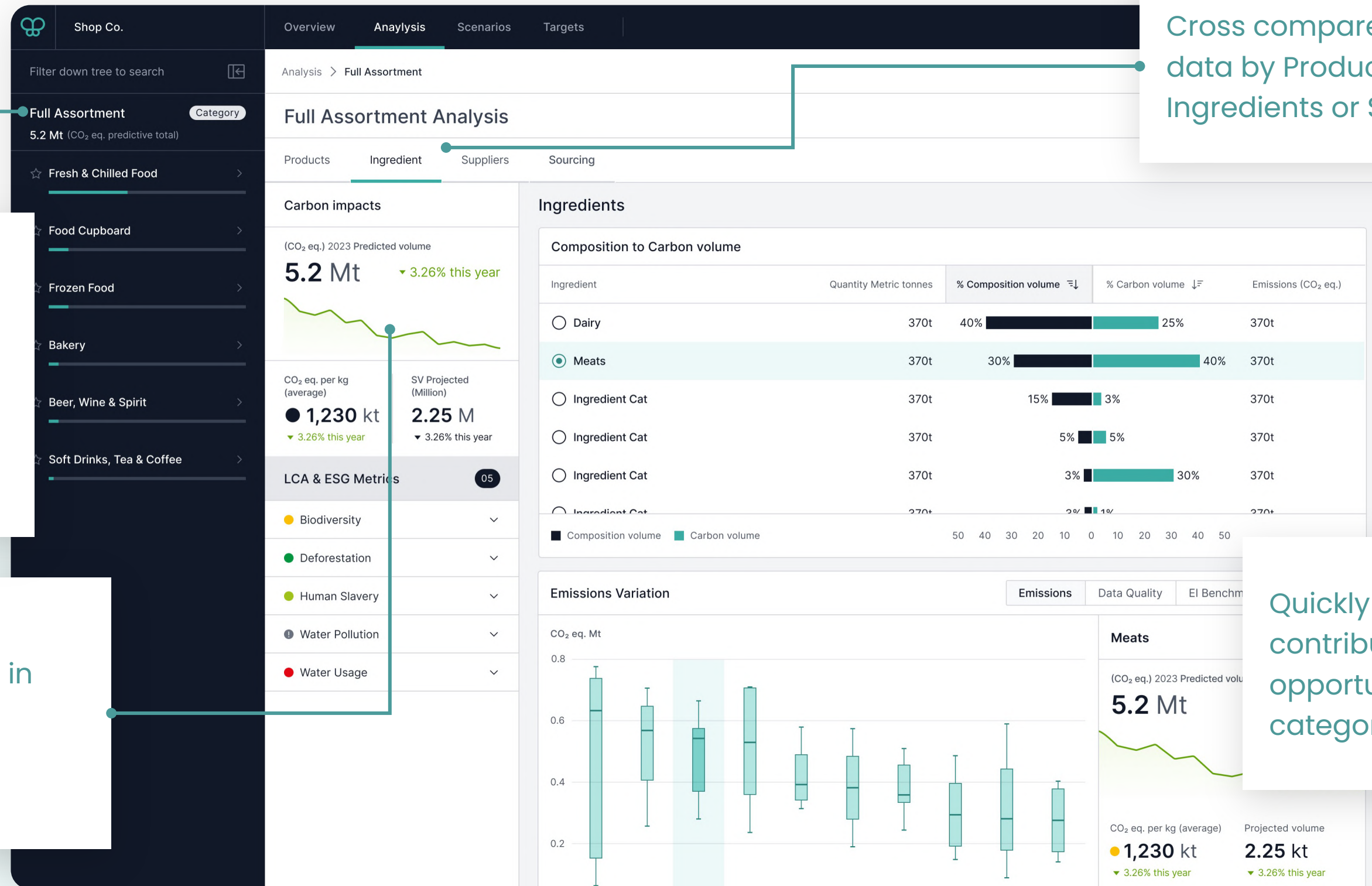
- Enterprise SSO
- Secure access
- Quick setup
- Passwordless option

Available to all Brand Owners.



Category analysis

Provide category directors with the data they need.



Quickly explore your portfolio of products using your own taxonomy. Suppliers can view by Site, Customer or custom.

Emissions over time, tracked and updated in real-time as you collaborate with your supply chain.

Cross compare category data by Products, Ingredients or Suppliers.

Quickly identify emission contributions, and find opportunities through category variance.

Scenario model

Enable carbon focussed product development. Build your next range of climate smart products.

The screenshot displays the Mondra software interface for a scenario model. On the left, a sidebar shows carbon footprint metrics: 71.7 t CO₂ eq. (current), 70.9 t CO₂ eq. (projected), and 1.03% change. Below this, it shows up-chain impacts for 'Soups - Prepared (Perishable) Category' at 285 t CO₂ eq. (0.26% change) and 'Full Assortment' at 3.74 kt CO₂ eq. (0.02% change). The main area shows a tree view for 'Chicken & Sweetcorn Soup' with ingredients like Chicken Fat, Chicken stock, Chicken thigh, boneless, Corn flour, and Garlic puree. On the right, an AI-powered chatbot 'Mondra Sherpa' provides suggestions, such as swapping 50% of cheddar for soft cheese to reduce carbon by 5%, and sourcing onions from GBR to reduce carbon by 578t. A bar chart shows CO₂ eq. per kg for onions from GBR (0.14), FRA (0.20), POL (0.28), and NLD (0.29).

Product level changes instantly calculated up to category and assortment level.

Modify formulation at every level of the product's recipe.

AI powered automated reduction options coming soon.



Thank you

Learn more by contacting :

sales@mondra.com

