



GAI*n*

Uplift your enterprise with AI driven experiences

Flexible integration with Hyperscalers. Cloud or on-prem deployment with open foundational, proprietary enterprise/hybrid models.

- Nagarro presents GAI*n*, your comprehensive solution for harnessing enterprise data to elevate both customer and employee experiences. With its enterprise-wide intelligent search capabilities, GAI*n* simplifies navigation through vast datasets, seamlessly integrating with various generative AI tools and services. It is also utilized in federated training for AI models, enhancing data security and privacy.
- Whether deployed as standalone solutions or integrated into existing enterprise systems, GAI*n* facilitates effortless and seamless integration. Tailored AI accelerators and plugins cater to specific business needs, offering functionalities such as intelligent search, automated data retrieval, and seamless system integration.
- Prioritizing data security, GAI*n* always ensures the protection of sensitive information, empowering organizations to adapt and thrive in a rapidly evolving digital landscape via federated training.
- Nagarro's GAI*n* platform simplifies enterprise level AI solutions by using multiple accelerators and azure services like Azure Databricks, Azure Container, Azure IAM, Azure Application Gateway, and many more.

Why GAI*n*



Multi-layer Security



AI-infused accelerators



Evaluation engine



AI based multi-agent framework



Data analytics



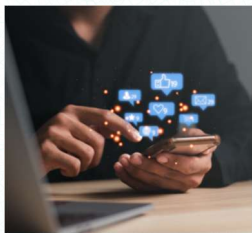
Hyper-personalized



Deploy anywhere



Federated training



Empowering marketing content innovation

GAI*n* helps marketing professionals leverage social media data for lead generation. It helps them understand social media post data and offers actionable insights on lead extraction and conversion. It identifies potential opportunities, crafts an action plan, and initiates communication with the client.

Intelligent legal advisory

Our Gen AI powered solution assists legal managers seeking expert guidance on legal advisory matters. It enables them to respond quickly and accurately using the Smart Search AI Plugin with 24/7 accessibility. It facilitates comprehending intricate aspects of compliance, governance, and regulatory requirements.



Employee engagement

GAI*n* integrates with third-party technology applications through APIs for a seamless leave management experience. It helps employees check their leave balance and holidays and apply for leaves and improve productivity through NPL-enabled leave management.