



Our Healthcare Solutions Principles

- Single version of the truth
- Single quality measures platform
- Integrated analytics (Quality vs Cost)
- Reports designed with the action in mind
- BYOA™- Build Your Own Analytics (self-service)
- Simplicity / User Experience
- Integration capable (extensibility)
- Scalability

OneX enables the States to provide connected care and meet the Triple Aim Initiative:

-  Improve patient experience and quality
-  Reduce Costs
-  Improve health for the population

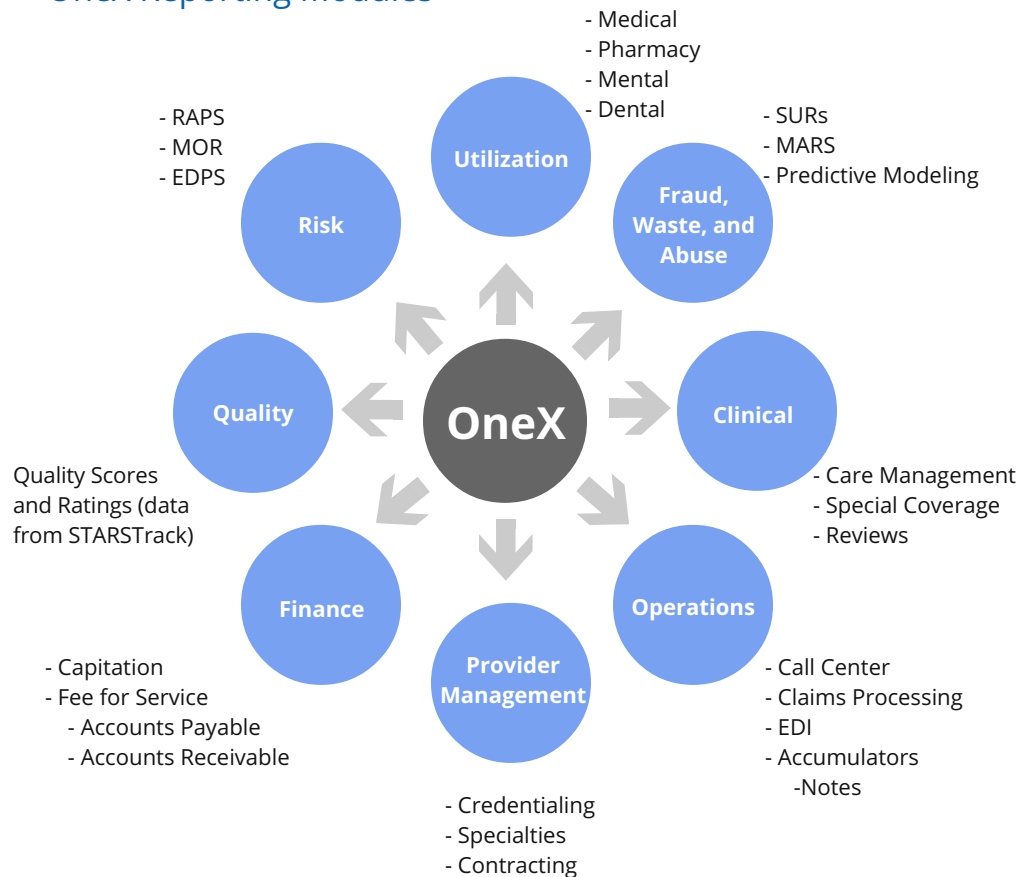
State Government & Health Plans

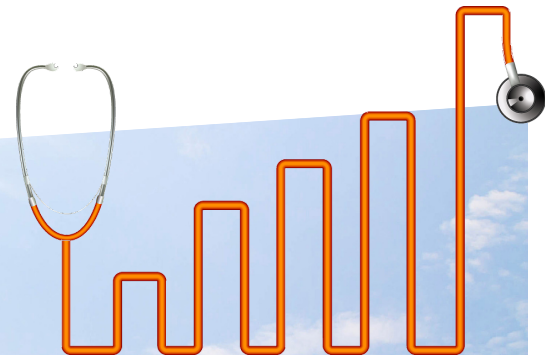
Experience ONE Version of the Truth.

OneX is an enterprise healthcare Data Warehouse built to integrate and unify health plans and government institutions data assets into a single, integrated, and cleaned data repository. It was built specifically for analytics and reporting needs of any segment including:

- Medicare (CMS's Five Stars Rating Program)
- Medicaid (CMS's 2390-F)
- Exchanges
- Commercial (QRS for QHP's)

OneX Reporting Modules





OneX solves three main problems:

1. Data Integration Challenge:

- Eliminates fragmentation of the data, heterogeneous formats. Single version of the truth.

2. Lack of effective reporting and analysis:

- Critical subject areas, all in ONE integrated model, which allows for cross-subject analysis. Technology and analyses bundled.

3. Staying relevant to the current needs and regulations:

- Maintain its relevance by creating value through the evolution of Triple-Aim.

Key Functionalities to Experiment a Single Version of the Truth



Integrates data from any source (structured or unstructured data)



It has more than 10 domains including: Member, Provider, Claims, Authorizations, Utilization Management, Medical Management, Payment to Providers, among others.



It comes with data integration configurations for major claim systems

OneX Differentiators

- Supports decision making process for the State by taking data from all your relevant sources
- Same platform can be leveraged to manage all the on-going programs for the State (Medicaid/private option, commercial exchanges, Medicare, etc.)
 - PCMH performance monitoring
 - Identification of care gaps
 - Establish patient-centered workflow
- Disseminate key data through the various stakeholder groups and maximize existing systems and applications
- Pharmacy/Mental/Dental/Medical utilization monitoring
- Grow with the needs of the State as its healthcare programs continue to evolve



KEEP IN TOUCH WITH US

About Nagnoi, LLC: Nagnoi, LLC is a leading systems integrator and consulting firm specialized in Business Intelligence for healthcare with products and services for Payors, Providers, and Public Health organizations.

info@nagnoi.com | nagnoi.com

©2016 Nagnoi, LLC. All rights reserved.