

Solve your migration troubles with our Microsoft 365 Migrations Team



About ne Digital Microsoft 365 Migration

ne Digital optimizes IT infrastructure for private equity asset value creation. We co-manage secure, mission-critical workloads with expert architects and certified engineers. Our Managed Services in Compliance, Cybersecurity, Microsoft 365, and Azure improve efficiency, reduce costs, and enhance security.

What we offer

Our Microsoft 365 Migration Services expertly facilitate the transition from platforms like Google Workspaces to Microsoft 365. Including: **1.) Strategy and Planning:** Evaluating existing workloads for seamless integration into Microsoft 365. **2.) Licensing Analysis:** Tailoring Microsoft 365 licensing to meet specific needs. **3.) Risk Mitigation:** Crafting a migration plan that aligns with your timeline, budget, and expectations, minimizing downtime and data loss. **4.) Internal Team Education:** Guiding your team through the migration process, ensuring a successful transition. **5.) Migration Execution:** Efficiently transferring all elements from Google Workspace to the corresponding Microsoft 365 services. **6.) Lifecycle Support:** Offering post-migration support to resolve issues swiftly. Our meticulous approach ensures a smooth, effective transition to Microsoft 365, addressing migration's technical and administrative aspects.

ne Digital, Inc.

<https://www.nedigital.com>

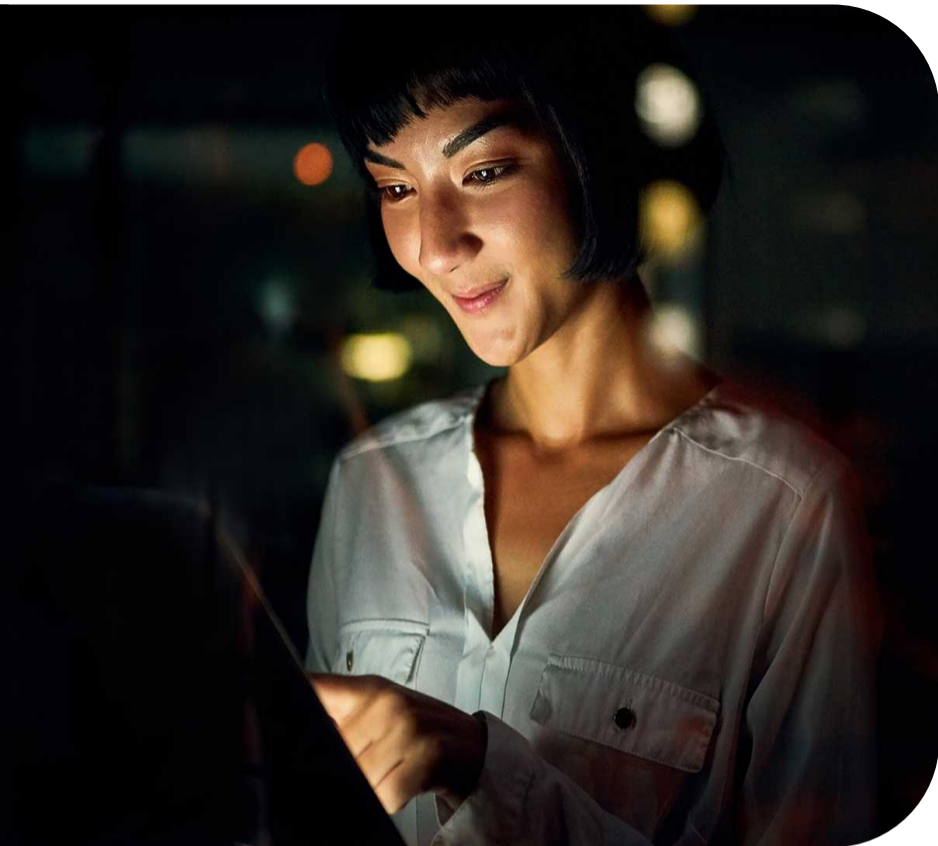
sales@nedigital.com

US: +1 (312) 238-9427 - UK & IE: +353 (1) 584-5893

What our customers are saying

"Life without ne Digital would be, complicated! 100% of employees had fully operational services in the Microsoft 365 environment during the cut-over day"

– Isabela Miranda, MT Manager, ETICAS Consulting



Why Microsoft 365?

Save your company money

Microsoft 365 is available as a simple monthly subscription. Avoid large up-front costs for new software while moving the cost of IT from capital to operating expense. And without on-premises servers to run email, websites, and document storage, you can reduce energy costs and save by no longer purchasing new server hardware.

Scale your business quickly and flexibly

Microsoft 365 grows with you on the Microsoft Azure cloud. Adding a new user is as simple as buying an additional license, which allows access to business-critical technology on up to five PCs/Macs and five mobile devices. Microsoft 365 provides many plans to fit the right capability needs and price points for each user in your organization.

Technical support

Your Microsoft 365 subscription comes with 24/7 support from a global network of experts, with one-hour response for critical, service-impacting events.

Financially backed SLA

Get peace of mind knowing your services are available when you need them with a financially backed, 99.9% uptime service-level agreement.

Simplified IT management

Reduce headaches by reducing your IT infrastructure. Content lives safely in globally distributed data centers with continuous backup and disaster recovery abilities.

Key use cases



Business-class email

Build anything from lightweight websites to multi-tier cloud services that scale up as your traffic grows.



Cloud storage

Rely on geo-redundant cloud storage for backup, archiving, and disaster recovery.



Meet online

Get actionable insights from your data by taking advantage of a fully compatible, enterprise-ready Hadoop service.



Collaborate, chat privately

Accelerate your mobile app development by using a backend hosted on Microsoft Azure.

Microsoft 365

Microsoft 365 is a cloud-based subscription service that brings together the best tools for the way people work today. By combining best-in-class apps like Excel and Outlook with powerful cloud services like OneDrive and Microsoft Teams, Microsoft 365 lets anyone create and share anywhere on any device.

Learn more at www.microsoft365.com

ne Digital, Inc.

<https://www.nedigital.com> | sales@nedigital.com | US: +1 (312) 238-9427 - UK & IE: +353 (1) 584-5893