



DYNAMICS 365 SUPPLY CHAIN MANAGEMENT AI QUICKSTART SPRINT **Identify high-value AI agent opportunities in your supply chain - in just 5 days**

Why this matters

Most supply chain AI initiatives stall early. Pilots don't scale, data isn't ready, and ERP complexity slows everything down. Our Quickstart Sprint cuts through that noise, giving you a clear, actionable path to AI-powered agents that actually deliver value.

What we mean by SCM

Supply Chain Management (SCM) — covering procurement, inventory, planning, and manufacturing operations is full of repetitive decisions, manual checks, and information gaps. AI agents are built to fix exactly that

What this sprint does

A fast, structured 5-day engagement to uncover where AI-powered agents can make the biggest impact and define a pilot-ready use case with KPIs, data needs, and a realistic path to a 30–45-day build.



Designed for SCM leaders working in Dynamics 365 or complex/legacy ERP environments who want clarity, speed, and a de-risked starting point.

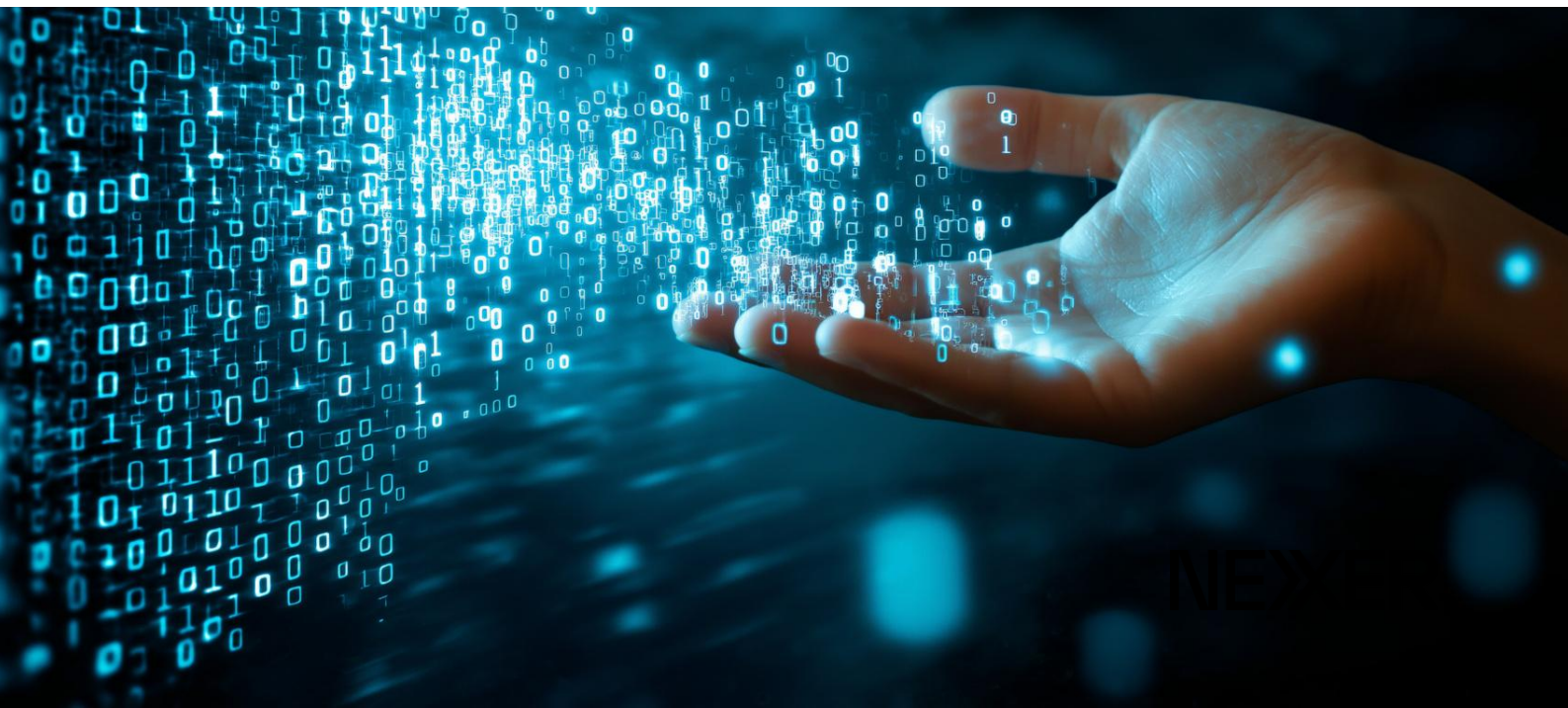
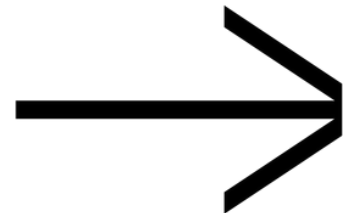
In this 5-day sprint you will have

1. A prioritised shortlist of high-value AI agent use cases
Clear scoring across value, feasibility, risk, and data readiness.

2. A pilot-ready use case
One domain, 2–3 anchor workflows, defined KPIs, and success criteria.

3. A practical roadmap to move into a 30–45 day pilot
Data, access, governance, and environment requirements - all mapped.

This is about fast clarity, low risk, and high confidence in where to start.



How the 5-day Sprint works

Day 1 – Kickoff & Rapid Intake

- Align on goals
- Map pains, KPIs, and systems
- Identify priority domains

Day 4 – Pilot Definition

- Select the best first agent
- Define KPIs and success measures
- Outline data, access, and governance needs

Day 2–3 – AI Agent Use-Case Discovery

- Translate pains into agentic workflows
- Score by value, feasibility, risk, data readiness
- Produce Top 10 shortlist

Day 5 – Executive Readout

- Final shortlist
- Pilot one-pager
- Recommended next steps

Where AI agents typically unlock value

Procurement

- “Where is my PO?” status answers
- Invoice/GR mismatch triage
- Policy & contract guidance

Inventory / Planning

- ATP & availability explanations
- Replenishment & exception summaries
- Master data request validation

Manufacturing

- Shift handover summaries
- Quality issue intake & CAPA drafting
- Maintenance request triage

Start your SCM AI journey in just 5 days, schedule your Quickstart Sprint.

Email us at: infoea@nexergroup.com