



February 2026

NEXTANTCORTEX

SUBHEADING LINE HERE



From Fragmented Intelligence to Governed Enterprise Execution

The Structural Problem Inside Modern Enterprises



High-value professionals spend time consolidating, formatting, and validating instead of deciding.



AI tools exist — but they assist individuals, not the organization.



Governance and traceability break when AI operates outside enterprise controls.

**The issue is not lack of AI.
It is lack of operational orchestration.**

What Organizations Actually Need



AI that works across systems, not inside one tool.



Agents that execute structured work, not just generate text.



Governance aligned with enterprise identity and security models.



An architecture that scales across departments, not isolated use cases.



A foundation for multi-agent automation — not one-off assistants.



What NextantCortex Enables

- ✓ NextantCortex introduces an operational AI layer inside the Microsoft ecosystem.
- ✓ Connects corporate knowledge into a unified intelligence plane.
- ✓ Orchestrates specialized agents across workflows.
- ✓ Executes cross-system tasks under delegated permissions.
- ✓ Maintains Zero Trust, auditability, and cost governance.
- ✓ Scales from one department to enterprise-wide deployment.

**This is not a chatbot.
It is an execution fabric
for enterprise AI.**

Strategic Impact



What is NextantCortex?

An Enterprise Framework for Governed Multi-Agent Systems



Not a Chatbot.
Not a Single
Use Case.



NextantCortex is a standardized architecture for building and scaling intelligent agents inside the Microsoft ecosystem.



A central Orchestrator for reasoning and routing.



A unified enterprise memory layer (RAG + structured context).



A modular system of specialized sub-agents (Skills).



A governed execution environment under Zero Trust.



Built-in observability, resilience, and cost control.

A Reusable Operational Core

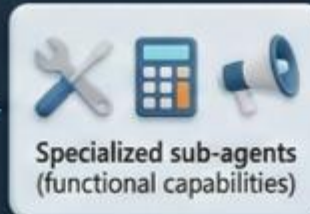
Instead of building isolated AI solutions per department, NextantCortex deploys a reusable "Core" that remains constant. **Only three elements change per implementation:**



Connected data sources




Domain-specific Rules (SOUL / policies)




Specialized sub-agents (functional capabilities)


The architecture stays the same.


Built Natively for the Microsoft Enterprise Stack


 **Microsoft Agent Framework** for orchestration

 **Azure OpenAI** for reasoning

 **Azure AI Search** for enterprise RAG

 **Microsoft Graph** for execution

 **Service Bus + Functions** for asynchronous workflows

 **Full Entra ID** delegated permissions

This ensures:

- ✓ Security alignment
- ✓ Operational consistency
- ✓ Cloud-native scalability

NextantCortex is **not** an AI feature. It is a standardized operational AI layer designed to integrate intelligence into enterprise execution at scale.

Why NextantCortex is Enterprise Grade

From Experimental Agents to Governed AI Infrastructure



Open-Source Agents



- Local execution environments
- Broad or unrestricted system access
- Limited auditability
- High risk of prompt injection exploitation



- Single runtime instance
- Designed for individual usage
- Limited concurrency control
- Manual scaling



- Local markdown files (SOUL, MEMORY)
- Context window limitations
- Fragile long-term persistence



- Minimal cost controls
- No enterprise observability
- Hard to enforce policies



NextantCortex



- Delegated permissions via Entra ID
- Zero Trust architecture
- Private endpoints and network isolation
- Secure sandbox for dynamic code execution
- Full traceability of every action



- Native multi-agent orchestration
- Separation of synchronous reasoning and asynchronous execution
- Event-driven scaling
- Cloud-native horizontal scalability



- Azure AI Search (hybrid semantic retrieval)
- Structured contextual memory (Cosmos DB)
- SharePoint as official system of record
- Persistent, queryable, auditable knowledge layer



- OpenTelemetry + Application Insights
- Cost governance (APIM + Cost Management)
- Guardrails and tool allowlisting
- AI evaluation and grounding controls

1 Enterprise Security by Design



2 Scalable Multi-Agent Architecture



3 Enterprise Memory Model



4 Governance & Operational Control

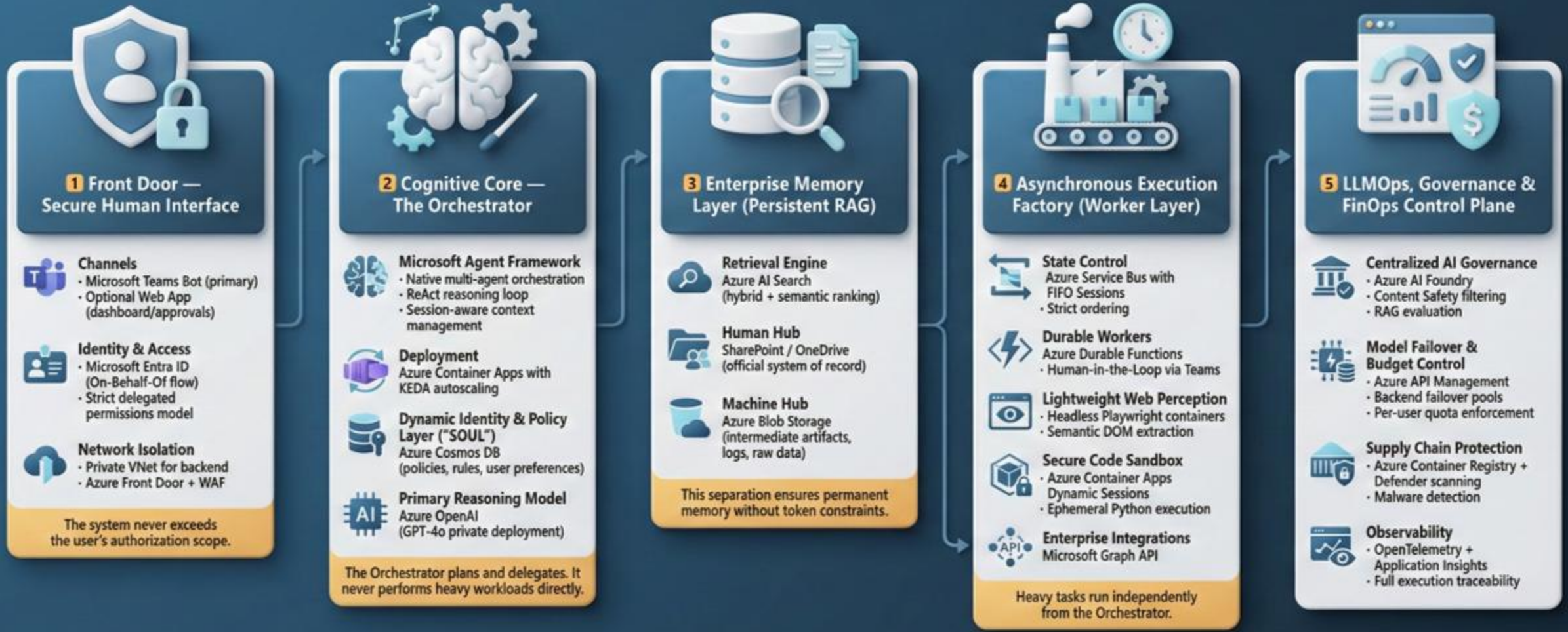


Open-source agents are powerful experimentation tools.

NextantCortex is a production-ready operational AI framework designed for regulated, large-scale enterprise environments.

NextantCortex Architecture

Secure Operational AI Infrastructure Layer | Supervisor-Worker Pattern



NextantCortex is not an AI tool. It is a secure operational AI infrastructure layer.