



# Nextbitt

Sustainable Asset  
Management

Unlocking Efficiency  
Embracing Sustainability



# Sustainable Asset Management

Managing physical assets efficiently is an essential step towards overcoming one of the great challenges facing organizations today:

The Carbon  
Footprint  
Reduction

# Sustainable Asset Management

Nextbitt offers a  
**technology**  
that allows for

The most efficient  
management of  
physical assets in  
a sustainable way





01

Asset Management



02

Facility Management



# Green Digital Transition



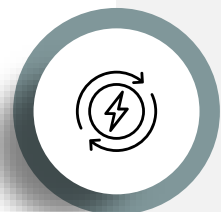
03

Field Service



04

IoT



05

Energy Management System



06

Environmental Management System



Sustainability

THE PRODUCTS

# Enterprise Asset Management

## Physical Assets

Digitalization and lifecycle monitoring

## Maintenance

Preventive, corrective and predictive maintenance

## Process Optimization

Operational processes and traceability

## Logistics

Stock and purchasing management

## Facility Management

Inventory service, cleaning, catering, courier services, gardening, pest control

## Service Level Agreement Management

SLA's definition and automatic calculation

## Contract Management

Contract management with alarm

## Audits

Audit plan, automatic scoring model

## Project Management

Portfolio, construction work, GANTT graphics



**S.A.M.**  
Smart Asset  
Management

It uses cognitive algorithms from Microsoft and AI from Open AI to **automate and optimize operational management**. It's accessible via Microsoft Teams, WhatsApp, Telegram and voice commands.



THE PRODUCTS

# Energy Management System

## Sensorization of Buildings

Management of installations through automated real time data collection with high level granularity

## Reporting

Monitoring energy consumption: electricity, water & gas

## Legal Compliance

## Energy Efficiency

## Management of Technical Parameters

- Power voltage;
- Comparison of quantities;
- Fine data granularity

Breakdown and interpretation of consumption

Identification of anomalous consumption, voltage peaks or other non-conformities



THE PRODUCTS

# Environmental Management System

Real-time monitoring and data collection

Energy, water, waste, materials, emissions

Reporting

Measuring and calculating the carbon footprint

Integration with other existing applications

Co2 Emissions

Scopes 1, 2 and 3

Data auditability

Creation of customizable dashboards



**CSRD Legal Compliance:**  
Companies legally required to implement ESG reports and practices







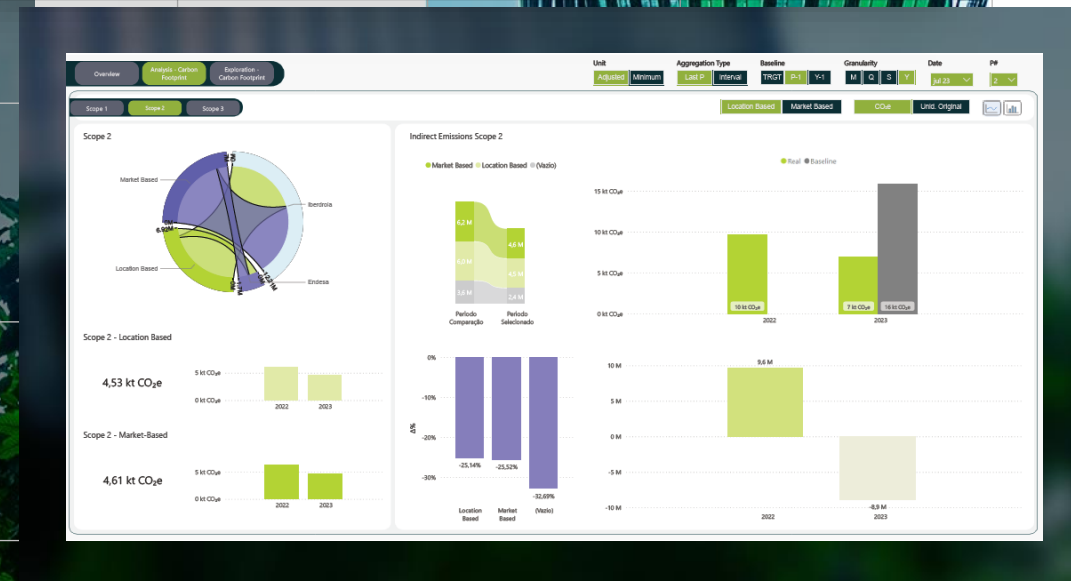
**EAM**  
Enterprise Asset  
Management



**EMS**  
Energy Management  
System



**EnvMS**  
Environmental  
Management System



THE SERVICES

# Much more than technology

**Consulting and  
Project  
Implementation**  
—

**Sustainability  
Consulting**  
—

**Inventory Service**  
—

**Sensorising  
Service**  
—



# Real time auditable data

CSR D

IoT

Connectivity

## Sensorisation Hardware



Air Quality Sensor



Electric Power Gateway



Electric Power Sensor



Pulse Adapter for water or gas



ATEX pulse sensor for digitizing gas consumption



Water sensor



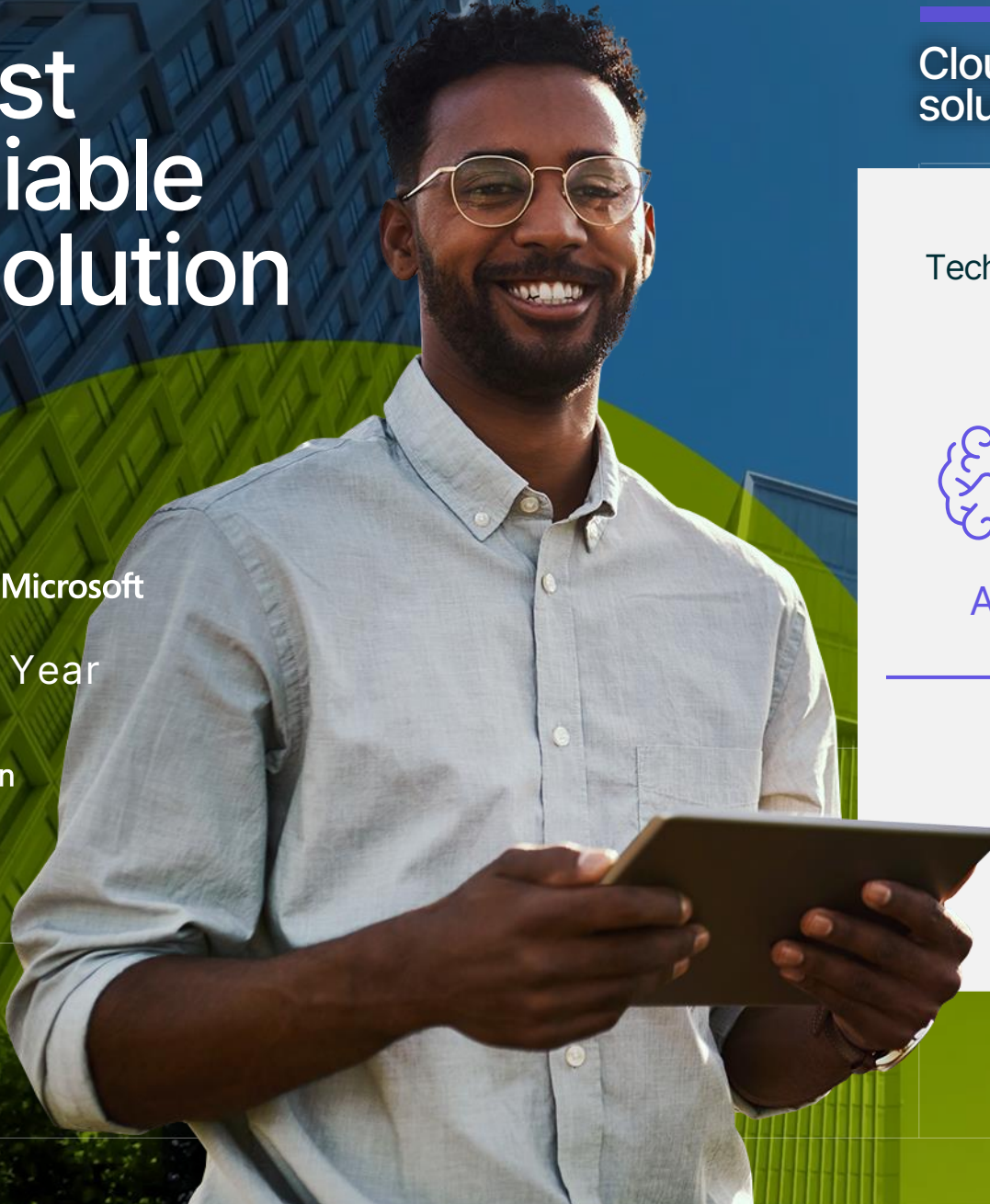
THE TECHNOLOGY

# A robust and reliable Tech solution



AWARDS  Microsoft

Partner of the Year  
2019 – Las Vegas  
2017 – Washington



Cloud-based solution

SaaS

Integrated approach

Technology |  Microsoft



AI



Microsoft Azure



SaaS



IoT

API Standard



THE TECHNOLOGY

# Simplified Integrations

## Software

- AutoCAD
- BMS

## Standard REST API

Sending information to corporate Data Lakes

## ERP

- SAP
- eServer iSeries
- Microsoft Dynamics
- Primavera
- ORACLE
- SAGE

## Robot Process Automation(RPA)

## Integration use cases

### Stock management

- Warehouses, items, quantities, value
- Consumption, returns, transfers
- Tax Authority Certification
- Transportation guides

### Purchasing management

- Purchases of services, direct purchases, fixed assets
- Partial and total receipts

### Intervention management

- Request replication
- Work order replication
- Status update
- Activity and Man Hours





## Comprehensive offer

- Technology for Physical Asset Management and Sustainability with IoT and AI
- Specialized Consulting and Inventory Services



## Flexible

Our technology evolves according to clients' needs



## Integrated

Integrates with your organization's existing software

# What makes us different



## 360° Asset Management

Centralized management of physical assets, buildings, field teams and suppliers for greater efficiency



## Scalable

Applicable to any organization, whether single or multiple locations

# Clients



## TELECOM & UTILITIES

- Huge volume of information
- Huge geographical dispersion of facilities and assets
- Focus on SLAs and service provider performance
- Complex technological ecosystems and a large number of integrations
- Maximum security and GDPR requirements



## BANKING

- Preventive activity plans
- Contract and project management
- Budget management
- SLA management
- Energy Management System



# Clients

## INDUSTRY AND LOGISTICS

- Registration of complex physical assets
- Management of manpower and internal teams
- Detailed and segmented Work Orders history record
- Automatic intervention assignment engine



INDITEX

Auchan



worten

SALSA JEANS



## RETAIL

- Preventive activity plans
- Contract and project management
- Budget management
- SLA management
- Energy Management System





# Clients



## INFRASTRUCTURE AND TRANSPORT

- Field Service
- Team and technician management
- SLAs
- Mobility
- Integrations



## SERVICES AND ASSISTANCE SERVICES

- Linear asset management
- Dynamic preventive maintenance plans
- Complex assets
- Asset management is "Mission Critical" for the operation



# Clients

## ARENAS

- Contract and service provider management
- Management of pre- and post-event activities
- Control of operational resources
- Consumption monitoring



## HEALTHCARE

- Equipment registration
- Mobility management
- Intervention planning
- SLA management





# Energy Management at BPI



## SAVINGS

Around 5% savings in electricity costs



## BANK

BPI Portugal 2023

Branches + Headquarters

4,500,000 of kWh Monitored/annually

Total 1.500 People



## NEXTBITT ACTIONS

IoT - Building, asset & meter sensing

Real-time monitoring of energy costs

Support in obtaining ISO 50001 certification

Quick management decisions based on accurate real data





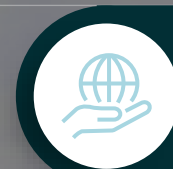
# Water Management at EDP



## SAVINGS

Automatic Water Leak Detection

Reduced water consumption



## NEXTBITT ACTIONS

IoT - Building, asset & meter sensing

Alarms for non-standard water consumption

Water consumption reports by building have created greater awareness of water use



## ENERGY

EDP PORTUGAL  
2023

Warehouses,  
Buildings and Shops

~27,600m<sup>3</sup>  
of water/year\*

\*Includes consumption by municipal services and boreholes.



# Proven Recognition



## PARTNERSHIPS

accenture

EXPLORER  
INVESTMENTS

Microsoft



## AWARDS AND CERTIFICATIONS

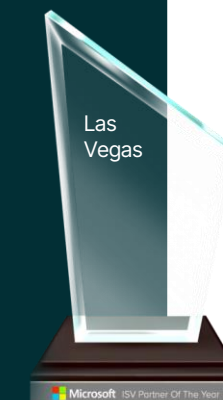
Deloitte.

50 | Technology Fast 50  
2023 PORTUGAL  
Deloitte.



Microsoft

Partner of  
The Year



# The right Sustainability journey for your organization



**EAM** | Enterprise Asset Management



**EMS** | Energy Management System



**EnvMS** | Environmental Management System

EAM

EMS

EnvMS



The logo for Nextbitt, featuring a stylized 'N' icon followed by the word 'Nextbitt' in a bold, sans-serif font.

Sustainable Asset  
Management

# Unlocking Efficiency Embracing Sustainability

Lisbon | Portugal  
Madrid | Spain

(+351) 211 347 042  
info@nextbitt.com  
www.nextbitt.com

