

Microsoft Power BI Quick Start



Nihilent
evolving ideas

Give everyone in your organization a powerful new way to work with the [Power BI Quick Start Program](#) from Nihilent.

For a limited time, we are offering the Power BI Quick Start Program, based on the Microsoft platform, to help you jump start your first Power BI solution. For \$15,000 you will get your first Power BI solution in just 2 weeks that includes the following services and support:

- Build a proof-of-concept Power BI solution
- Mentor your IT team on Power BI solution development
- Mentor your analysts and SMEs on creation, usage and analysis of powerful visualizations
- Power BI Q&A to ask questions and get answers from your BI solution
- A PowerPivot solution that includes: 2 data sources, 1 transaction table and 8-10 dimensions
- 2-3 compelling dashboards across all devices

**Customer needs a trial Power BI subscription—Nihilent will help facilitate a trial subscription if needed*

Analyze Data with Excel

Easily discover and access public and corporate data

Power Query, a feature of Excel, enables you to more easily discover, combine, and transform data from multiple data sources with the familiarity of Excel.

- Search both public and corporate data
- Clean and transform data for ease of analysis
- Merge data from multiple sources

Visualize and explore

Power View and Power Map, features of Excel, allow you to create interactive data visualizations to explore and uncover insights and present findings.

- Bring your data to life with interactive data visualizations
- Add depth with 3D geospatial analysis
- Tell stories with interactive data views and tours

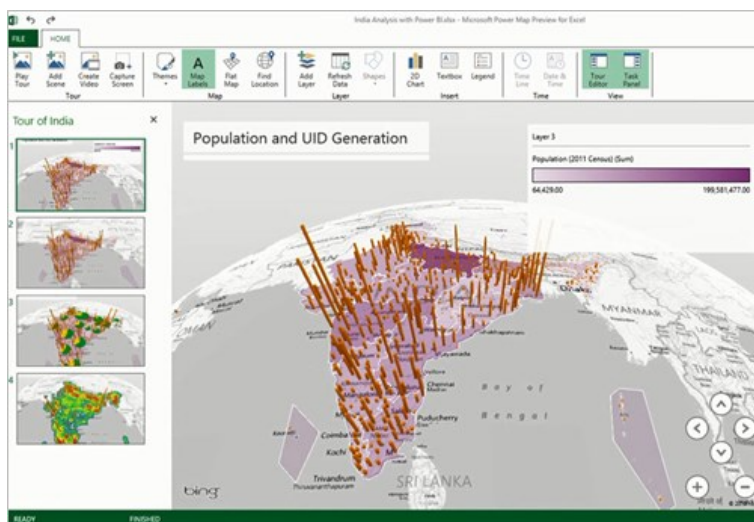


Image: Power Map, a feature of Excel



Nihilent
evolving ideas

**Microsoft
Partner**

Gold Data Analytics
Gold Cloud Platform
Gold Application Development
Gold Collaboration and Content
Silver Data Platform
Silver Cloud Productivity

Microsoft Partner of the Year
2016 Finalist

Cloud Packaged Solutions Award

Create powerful data models

Power Pivot, a feature of Excel, provides powerful analytical modeling. Data is processed in-memory allowing you to work quickly with data volumes in excess of 100 million rows, in split second times.

- Create relationships, custom measures, hierarchies, KPI's
- Analyze data quickly with in-memory processing

Share and Collaborate with Microsoft Power BI

Quickly create collaborative BI workspaces

Enable anyone to quickly create a collaborative BI workspace to share data and insights with Power BI.

- Create Power BI workspace to share data and reports

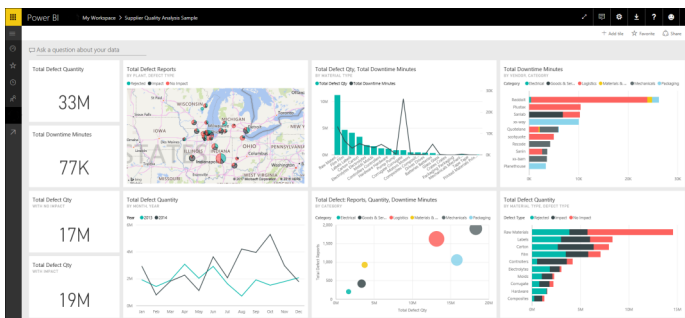


Image: Power BI Dashboard

Keep reports up to date with data refresh

Keep your reports up to date by scheduling when the data should refresh. The Power BI Gateway allows reports that have been saved to the cloud to connect back to on-premises data sources to refresh data.

- Scheduled data refresh for your reports
- Connect cloud based report to on-premises data

Manage data queries for the team

With Power BI people can share not only workbooks but also the queries they create using Power Query in Excel. This allows members of the team to build and manage data queries for others to use when creating their own reports.

- Create and share queries using Power Query in Excel
- Manage and monitor query usage in Power BI

Maintain a Data Catalog of searchable data

IT departments can now use the Data Catalog feature of Power BI to make it easier for everyone to find and connect to corporate data. Searching for data with Power Query in Excel will return accessible corporate data.

- Enable data search for IT managed corporate data
- Enable data search for data queries saved to Power BI
- Track data usage across your organization

Ask questions of your data in natural language

With the Q&A feature of Power BI people can type questions they have of the data in natural language. The system will interpret the question and present answers in the form of interactive visualizations.

Medal Count by sport for france and china as bar chart sorted by country
Show medal count; sport; and areas that medalled in sport where area is france or china as stacked bar chart

Medal Count by Sport, and Country/Region

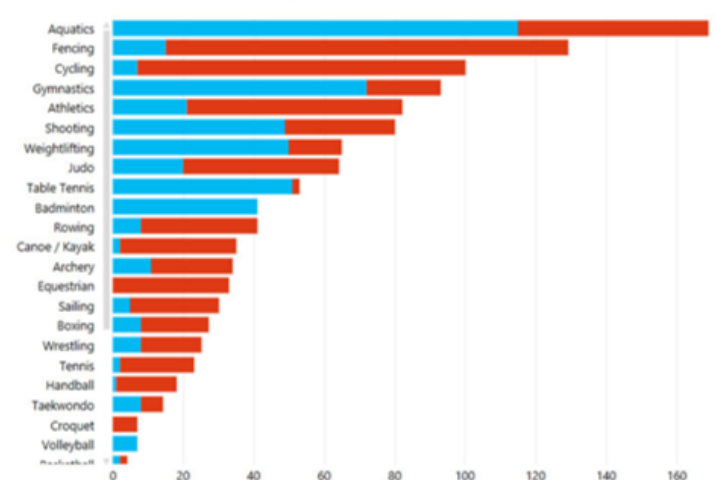


Image: Q&A, a feature of Power BI

Stay connected to reports via mobile access

Mobile access to reports in Power BI is provided through new HTML5 support and through the Power BI native apps for iOS, Android and Windows Phone.

- Navigate and explore browser based reports in HTML5
- Access your favorite reports in the Power BI mobile app

Contact Us

www.nihilentinc.com
(651) 352-4000
sales@nihilentinc.com



©2017 Nihilent Technologies, Inc.
Other product or service names mentioned are the trademarks of their respective owners.



Gold Data Analytics
Gold Cloud Platform
Gold Application Development
Gold Collaboration and Content
Silver Data Platform
Silver Cloud Productivity

Microsoft Partner of the Year
2016 Finalist
Cloud Packaged Solutions Award