



NTT DATA
Services

e-Magic



Project Omega – MVP Solution Concept for Energy Management – Screen Examples

June 28, 2022

TwinWorX[®]



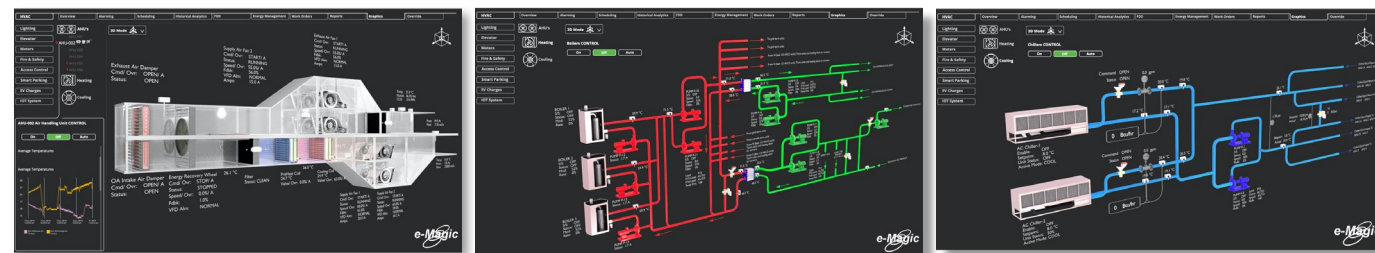
Scalable, secure and high-availability platform.



Integrate and normalize all telemetry data

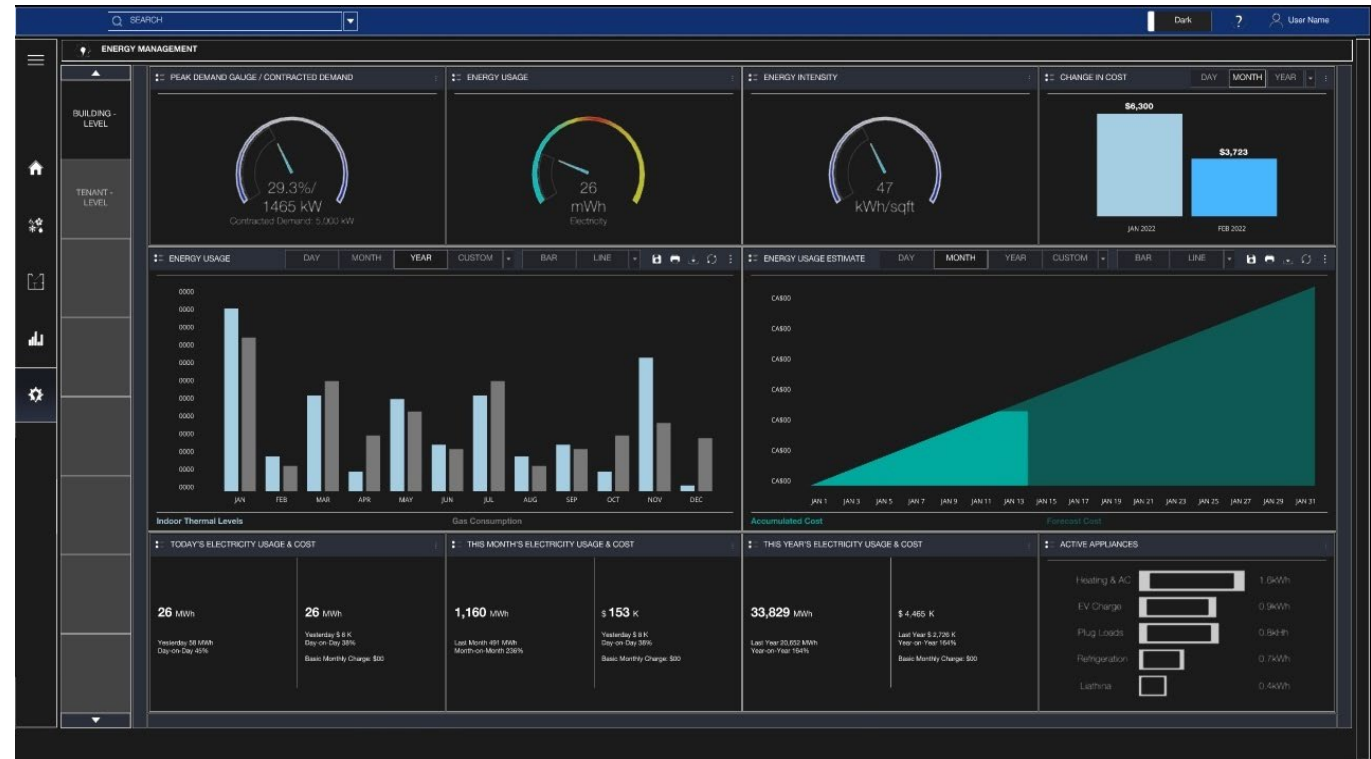


Real-time and historical data
Single pane of glass visualization
Monitoring, alarming, fault detection & diagnosis
Workflows and business systems
Reporting, analytics, ML and AI

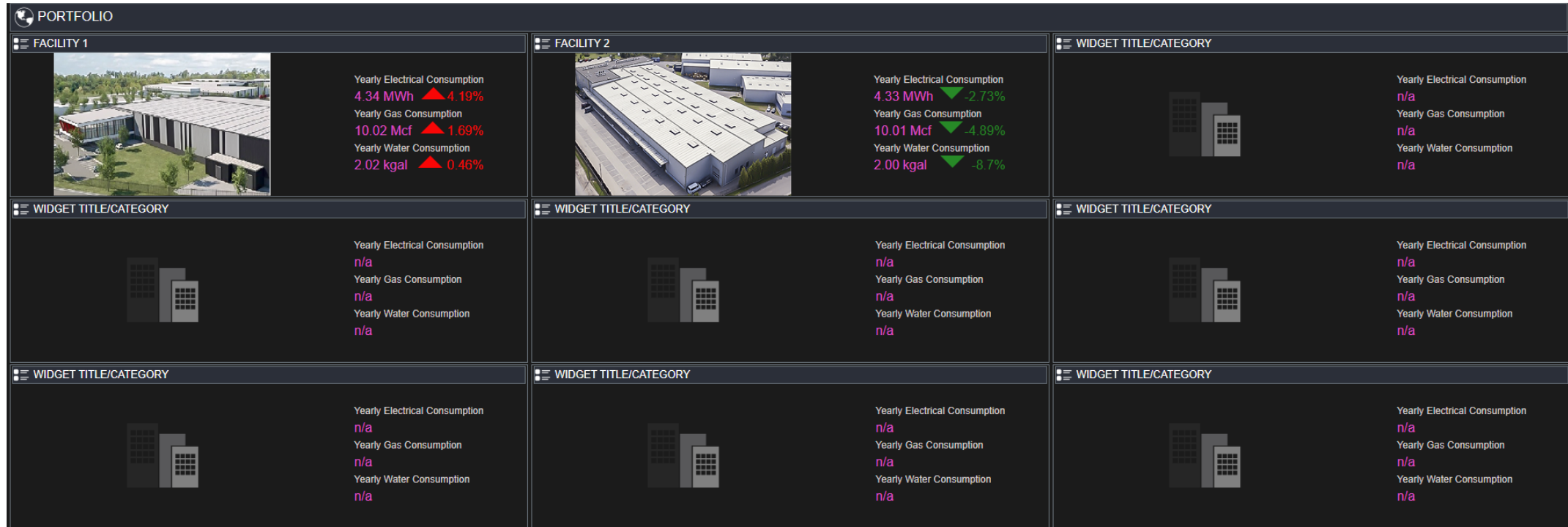


Use Case – Energy Use and Cost

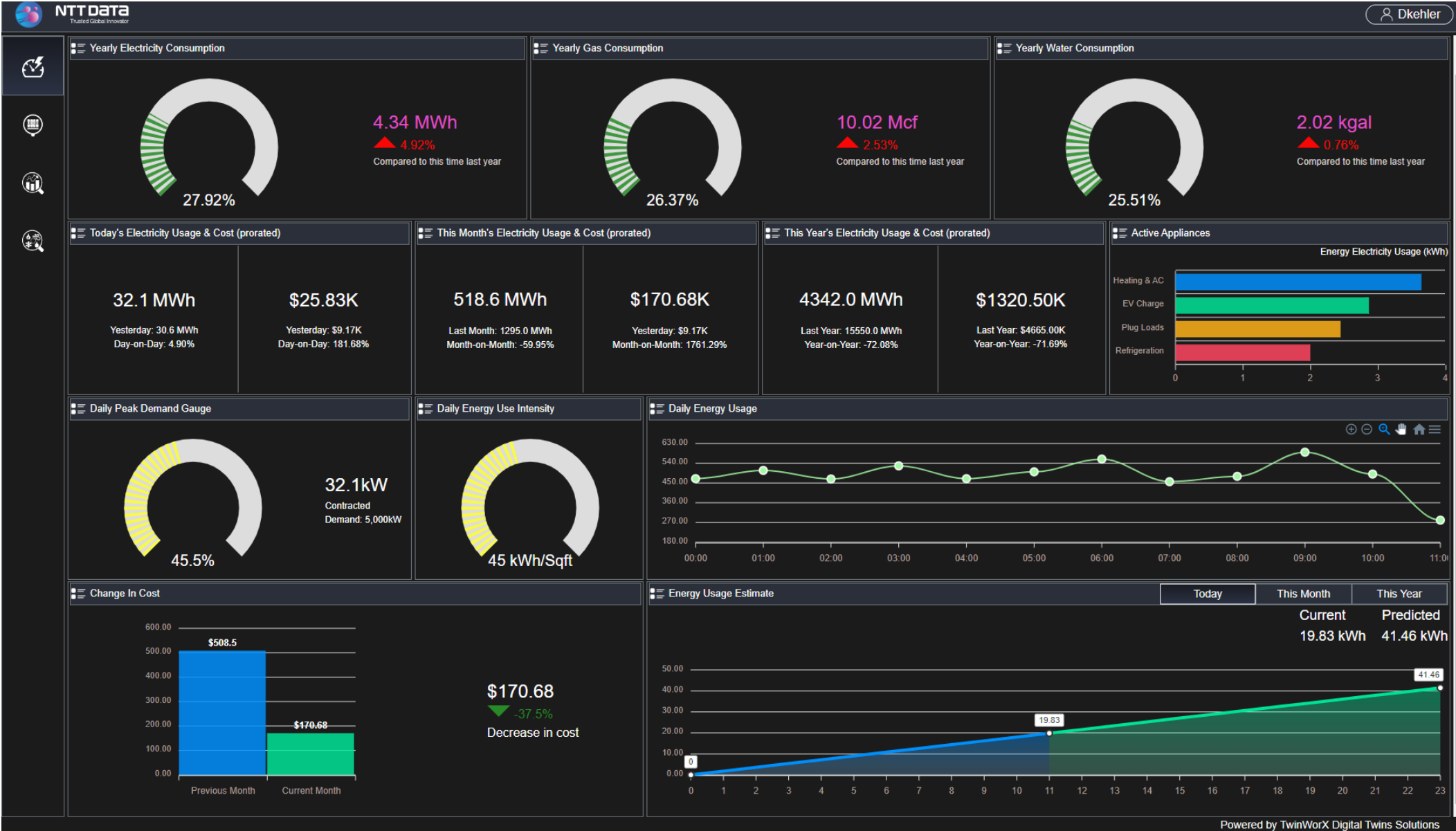
- Situation Awareness of Current Energy Usage
- Meters: Electricity, Gas, Water
- Equipment: HVAC, AHU, etc.
- KPI's:
 - » Peak Demand
 - » Energy Use Intensity (energy per sq ft)
 - » Cost, Change in Cost



Portfolio View

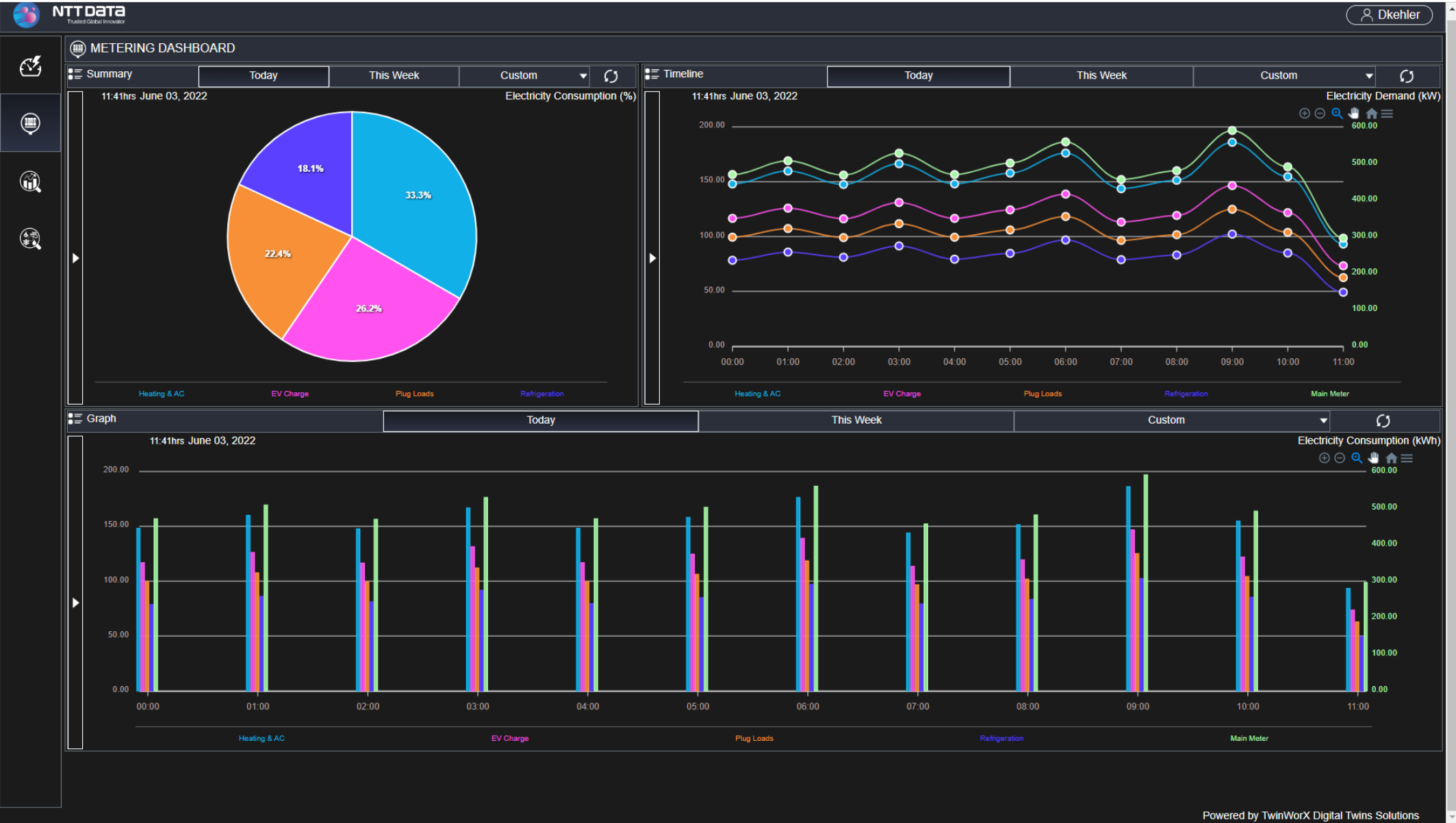


Energy Dashboard



Powered by TwinWorX Digital Twins Solutions

Metering Dashboard



Powered by TwinWorX Digital Twins Solutions

Asset Library – Air Handling Unit



Fault Detection & Diagnostics

NTT DATA
Trusted Global Innovator

Dkehlner

FAULT DETECTION AND DIAGNOSTICS

Active Faults | Historical Faults | Analytics

Show 25 entries Search:

BLDG	Location	Asset	Fault Name	Fault Activated Time	Fault Status	Potential Savings(\$)	Rule Categories
ASTARC	FLR_01	AHU1	Heating Failure	2022-02-24T19:31:00	ACTIVE	0	Fault, Energy, Maintenance
ASTARC	FLR_02	AHU3	Heating Failure	2022-02-24T19:31:00	ACTIVE	1000	Fault, Energy, Maintenance
ASTARC	FLR_02	AHU3	Cooling Valve Leaking	2022-03-26T19:31:00	ACTIVE	1100	Energy, Maintenance
ASTARC	FLR_01	AHU1	Cooling and Heating Simultaneously	2022-03-15T19:31:00	ACTIVE	1500	Energy, Maintenance
ASTARC	FLR_01	AHU1	Cooling Failure	2022-04-04T09:31:00	ACTIVE	1500	Fault, Energy, Maintenance
ASTARC	FLR_01	AHU1	Cooling and Heating Simultaneously	2022-03-11T09:31:00	ACTIVE	1500	Energy, Maintenance
ASTARC	FLR_02	AHU3	Cooling Failure	2022-02-24T05:02:00	ACTIVE	1000	Fault, Energy, Maintenance
ASTARC	FLR_01	AHU1	Cooling Valve Leaking	2022-03-26T19:31:00	ACTIVE	1100	Energy, Maintenance
ASTARC	FLR_02	AHU3	High Return CO2 Levels	2022-02-05T06:02:00	ACTIVE	1000	Comfort, Maintenance
ASTARC	FLR_01	AHU1	High Return Air Temperature	2022-04-07T06:02:00	ACTIVE	500	Energy
ASTARC	FLR_01	AHU1	Zone Humidity Outside of Comfort Limits	2022-03-17T11:15:00	ACTIVE	750	Comfort
ASTARC	BASEMENT	CH1	Chiller Running During Unoccupied Periods	2022-04-15T19:31:00	ACTIVE	3000	Energy
ASTARC	BASEMENT	BLR1	Boiler Running During Unoccupied Periods	2022-02-15T03:03:00	ACTIVE	4500	Energy
ASTARC	BASEMENT	BLR2	Boiler Running During Unoccupied Periods	2022-01-21T03:03:00	ACTIVE	4500	Energy
ASTARC	BASEMENT	BLR3	Boiler Running During Unoccupied Periods	2022-01-26T03:03:00	ACTIVE	4500	Energy
ASTARC	BASEMENT	BLR1	Boiler Running During Unoccupied Periods	2022-04-15T19:31:00	ACTIVE	4500	Energy
ASTARC	FLR_02	AHU3	High Return Air Temperature	2022-04-02T06:02:00	ACTIVE	500	Energy
ASTARC	FLR_02	AHU3	Cooling Valve Leaking	2022-02-20T05:23:00	ACTIVE	1100	Energy, Maintenance
ASTARC	FLR_01	AHU1	Cooling and Heating Simultaneously	2022-03-11T09:31:00	ACTIVE	1500	Energy, Maintenance
ASTARC	FLR_02	AHU3	High Return Air Temperature	2022-04-02T06:02:00	ACTIVE	500	Energy
ASTARC	FLR_02	AHU3	Zone Humidity Outside of Comfort Limits	2022-03-17T11:15:00	ACTIVE	750	Comfort
ASTARC	BASEMENT	CH1	Chiller Running During Unoccupied Periods	2022-03-26T19:31:00	ACTIVE	3000	Energy
ASTARC	BASEMENT	CH2	Chiller Running During Unoccupied Periods	2022-04-04T13:03:00	ACTIVE	3000	Energy
ASTARC	FLR_01	AHU1	High Return CO2 Levels	2022-03-24T09:31:00	ACTIVE	1500	Comfort, Maintenance
ASTARC	FLR_02	AHU3	High Return CO2 Levels	2022-02-05T06:02:00	ACTIVE	1000	Comfort, Maintenance

Showing 1 to 25 of 35 entries Previous **1** 2 Next

Powered by TwinWorX Digital Twins Solutions

Fault Detection and Diagnosis (FDD)

- Address issues impacting energy use and waste
- Algorithms based on Human Understanding of equipment problems
- Recommendations for correction
- Project cost savings \$ to support prioritization

Fault Name	Fault Activated Time	Fault Status	Potential Savings(\$)	Rule Categories
Heating Failure	2022-02-24T19:31:00	ACTIVE	0	Fault, Energy, Maintenance
Heating Failure	2022-02-24T19:31:00	ACTIVE	1000	Fault, Energy, Maintenance
Cooling Valve Leaking	2022-03-26T19:31:00	ACTIVE	1100	Energy, Maintenance
Cooling and Heating Simultaneously	2022-03-15T19:31:00	ACTIVE	1500	Energy, Maintenance
Cooling Failure	2022-04-04T09:31:00	ACTIVE	1500	Fault, Energy, Maintenance
Cooling and Heating Simultaneously	2022-03-11T09:31:00	ACTIVE	1500	Energy, Maintenance
Cooling Failure	2022-02-24T05:02:00	ACTIVE	1000	Fault, Energy, Maintenance
Cooling Valve Leaking	2022-03-26T19:31:00	ACTIVE	1100	Energy, Maintenance
High Return CO2 Levels	2022-02-05T06:02:00	ACTIVE	1000	Comfort, Maintenance
High Return Air Temperature	2022-04-07T06:02:00	ACTIVE	500	Energy
Zone Humidity Outside of Comfort Limits	2022-03-17T11:15:00	ACTIVE	750	Comfort
Chiller Running During Unoccupied Periods	2022-04-15T19:31:00	ACTIVE	3000	Energy

The screenshot shows a web browser window with the URL: <https://ntt1.eastus.cloudapp.azure.com/ClientApp/graphics/Description.html?faultGuid=b0ac52bb-729f-40b8-87aa-d57c5749423c>. The page content is as follows:

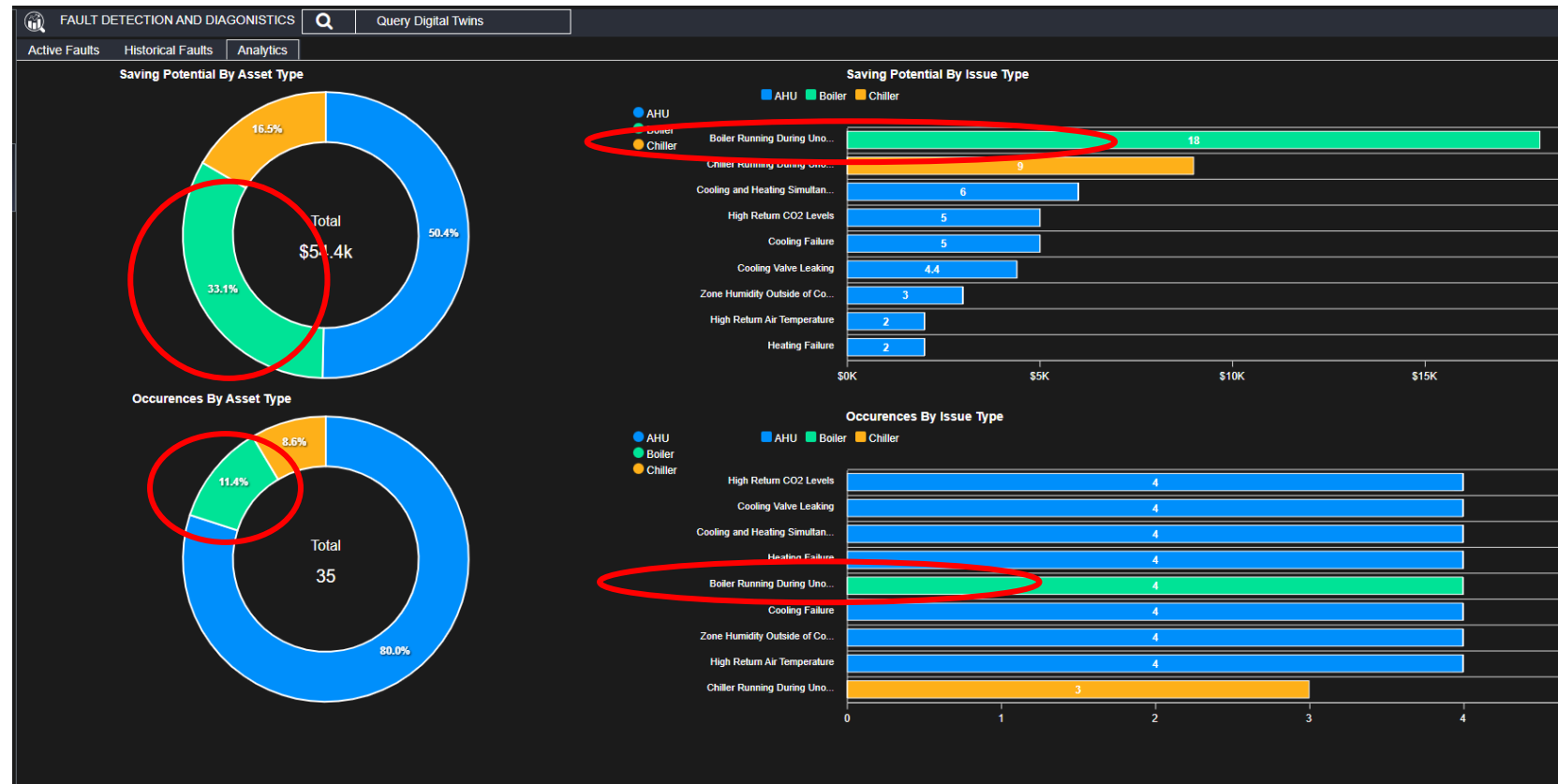
Fault Description:
This rule detects when the AHU fails to reach the requested level of heating. The Discharge Air Temperature is too low, and should be higher than the Mixed Air Temperature.

Probable Causes:
For a given amount of time, the Heating Valve Position greater than a threshold and the Discharge Air Fan in ON, Mixed Air Temperature is within a threshold of the Discharge Air Temperature.

Possible Solution:
Check proper function of Discharge Air Temperature sensor
Check proper function of Mixed Air Temperature sensor
Check cooling coil valve
Check heating coil valve
Check that flow through heating coil is uninterrupted
Check that heating coil hot water temperature is at or near setpoint

FDD Analytics and Insights

- Identify areas with most issues
- Understand impact of action / inaction
- Prioritize and schedule



Issues and Cost concentrated on 'Boiler Room'

Digital Twins Query Example

- Powerful queries driven by Digital Twins Definition Language (DTDL)
- Query multiple data sets connected to the twin
- Contextual understanding and insight

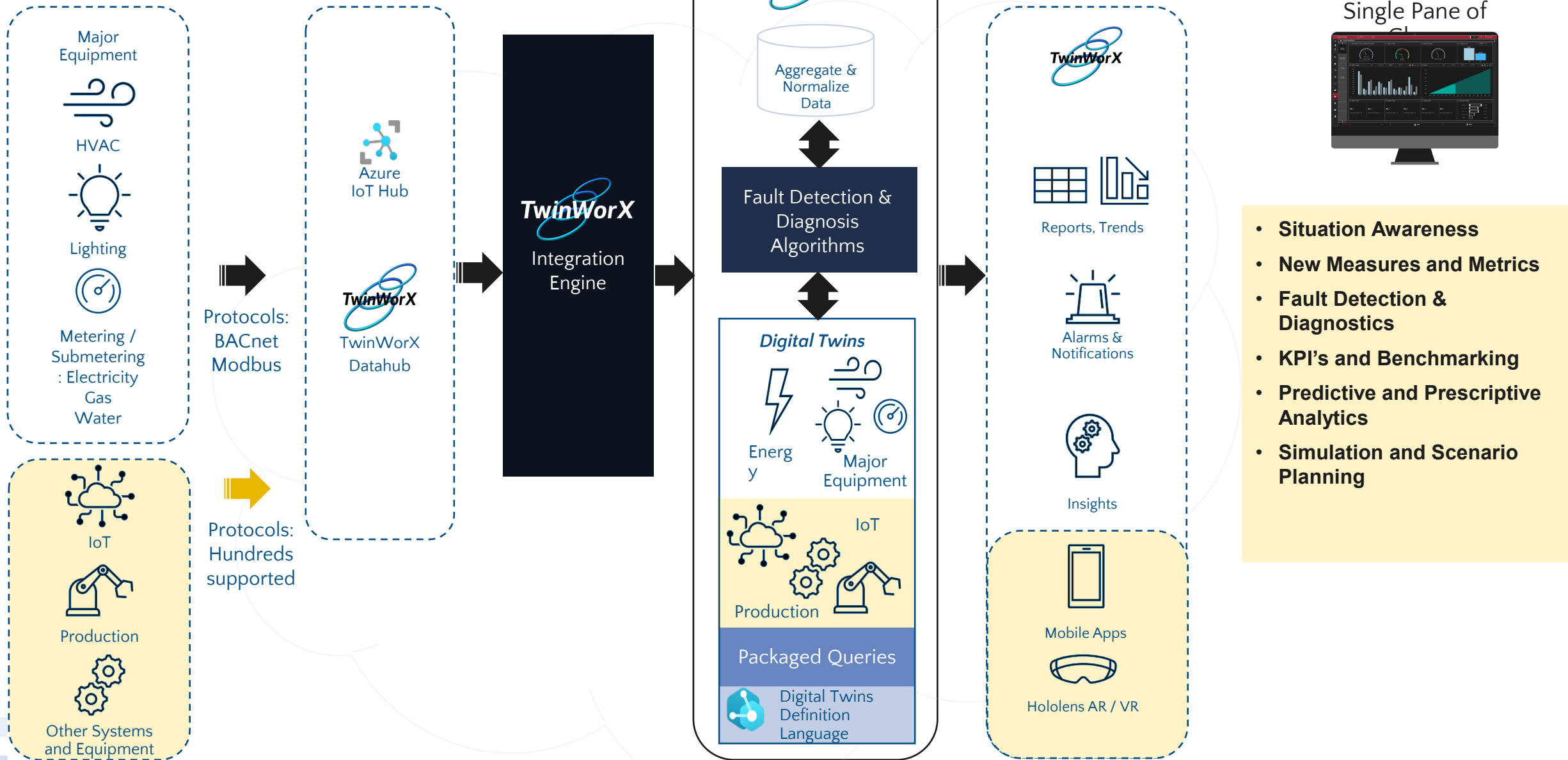
The screenshot shows a software interface for 'FAULT DETECTION AND DIAGNOSTICS'. At the top, there is a search bar with the text 'Query Digital Twins'. Below it, a list of queries is displayed, with 'What maintenance does the AHU need next?' highlighted by a red box. A red arrow points from this query to a detailed results window below. The results window is titled 'What maintenance does the AHU need next? Results' and contains a table with the following data:

Field	Value
AHU Name	AHU1
Maintenance Required	TRUE
Items required maintenance	RA Damper
Earliest Scheduled Date	2022-05-01
Maintenance Items	Damper
Contact Name	Jack Brown
Contact e-mail Address	jbrown@dampersco.com
Contact Phone	415-012-2310
Contact Company	The Dampers Company

A 'Done' button is visible at the bottom right of the results window.

Insights based on: AHU twin, Historian Data, FDD Faults, Vendor Information

Beyond the MVP – Extend, Scale



- **Situation Awareness**
- **New Measures and Metrics**
- **Fault Detection & Diagnostics**
- **KPI's and Benchmarking**
- **Predictive and Prescriptive Analytics**
- **Simulation and Scenario Planning**



NTT DATA Services