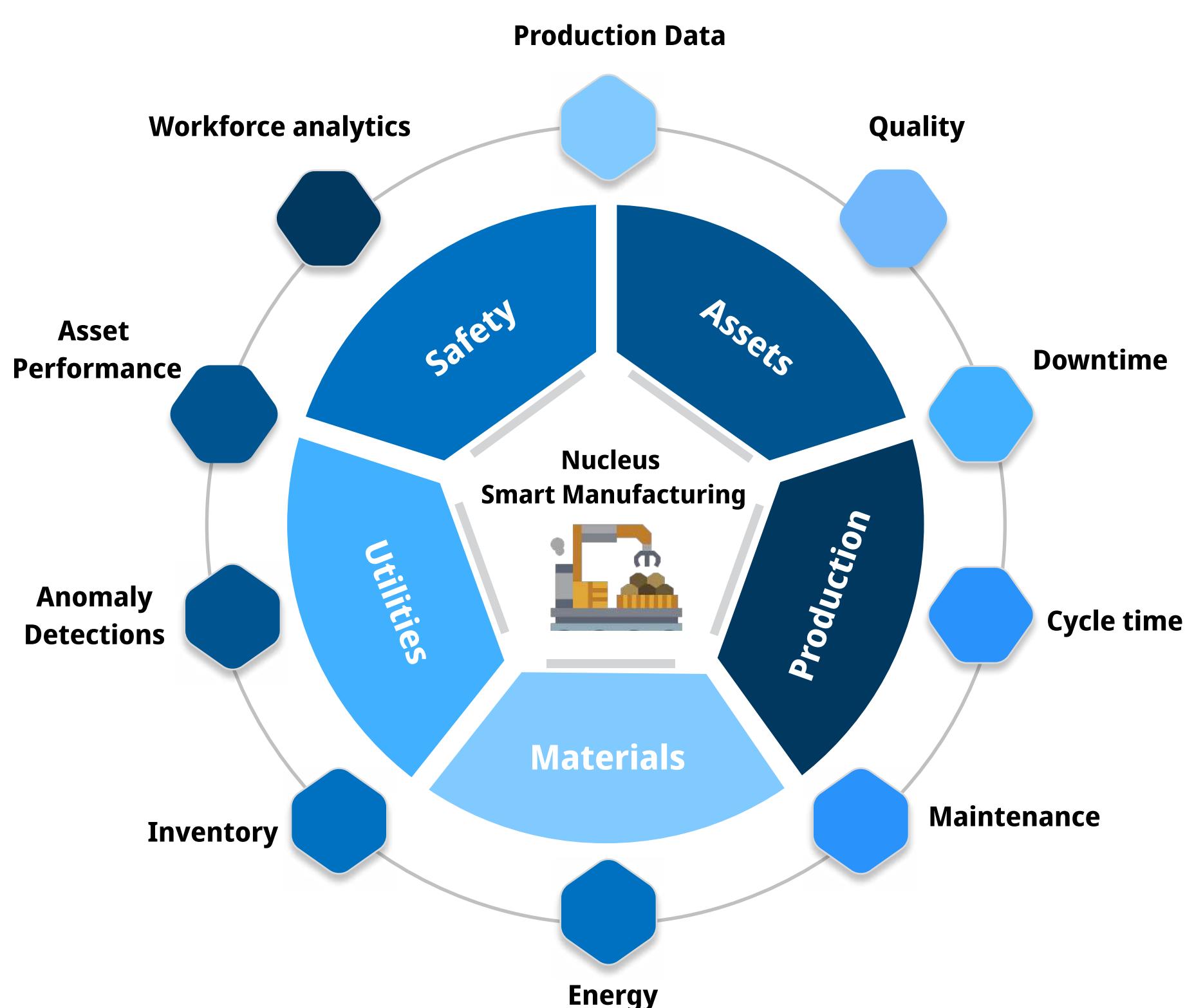


# Nucleus Smart Manufacturing

Enhance shopfloor productivity with targeted initiatives, ensuring precision in peak asset uptime, optimizing resource utilization and establishing a robust foundation for environmentally sustainable manufacturing practices.



*NFM is an open integration accelerator which can connect, collect, and contextualize disparate data from various factory data sources. It enables unified source of truth for various data types and sources the data for advanced analytics and centralized insights.*



## Business focus areas

- 
**Production**  
 Tracks factory output vs targets, downtime reasons, product defect rates, quality reasons and OEE metrics.
- 
**Asset**  
 Tracks the assets health, condition monitoring, facilitate for preventive and Predictive maintenance.
- 
**Materials**  
 Real time tracking of materials starting from raw materials, work in progress and finished goods along with track and trace capabilities.
- 
**Workforce Safety**  
 Provides the summary of employees safety, health conditions and workforce analytics
- 
**Utilities**  
 Measures and manages energy consumption to optimize efficiency, lower costs, and limit carbon footprint.

## Differentiators

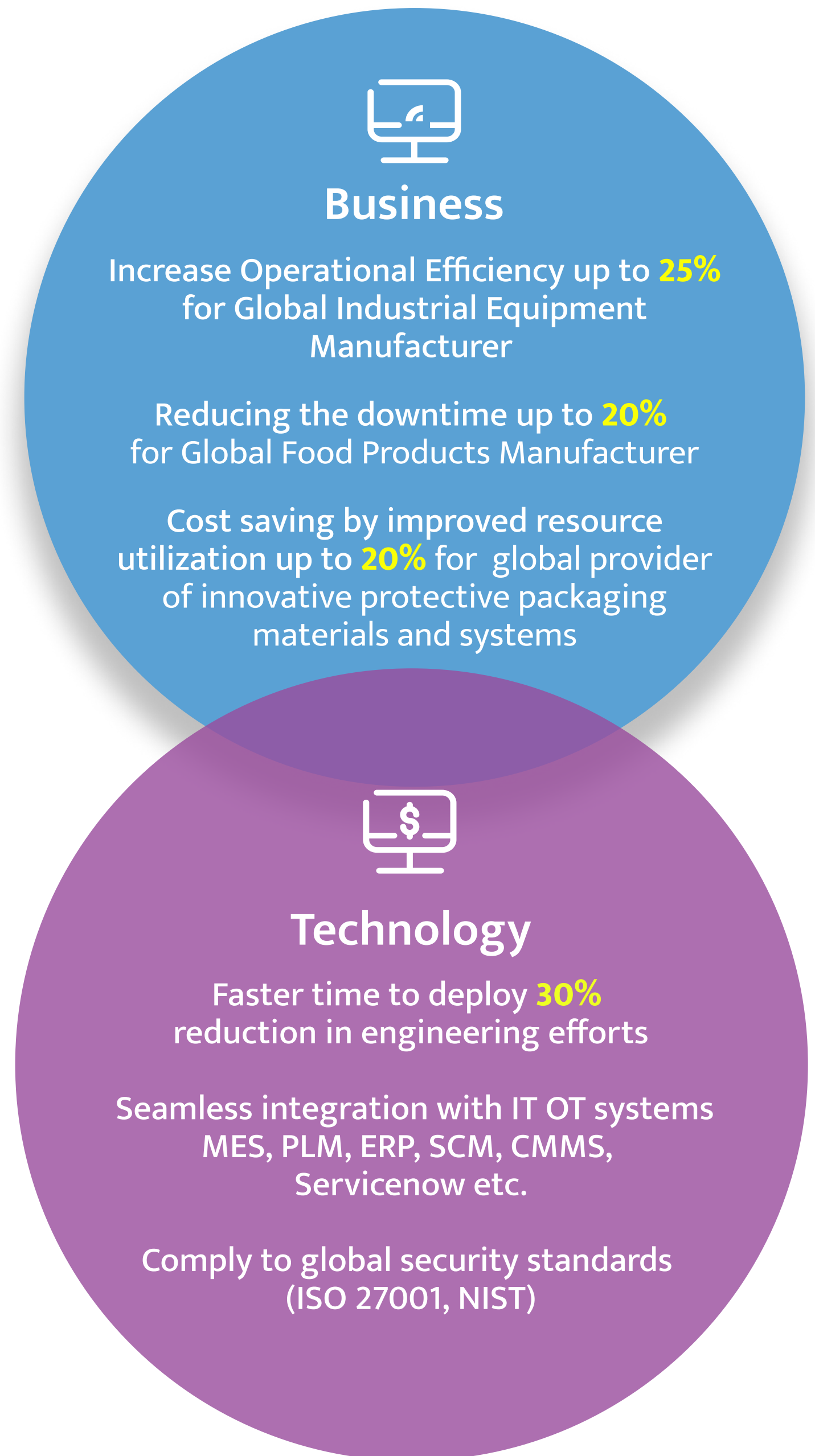
Perpetual licensing model	Future scalability	User Customizable solution	Reusability	Ready connections	Efficient engineering	One stop Solution
---------------------------	--------------------	----------------------------	-------------	-------------------	-----------------------	-------------------



## Capabilities

- Real-time Monitoring:** Continuous tracking of equipment performance to provide instant insights into operational efficiency, keeping stakeholders informed.
- Production Tracking:** Comprehensive tracking of production metrics, including output rates, cycle times, and overall equipment effectiveness.
- Efficiency Metrics:** Measurement and reporting of OEE metrics, including availability, performance, and quality, to gauge overall equipment effectiveness.
- Predictive Maintenance:** Utilization of data to predict potential equipment failures, enabling proactive maintenance and minimizing unplanned downtime.
- Self-Servicing Dashboards:** Tailoring interfaces to display key performance indicators and relevant data, providing a user-friendly experience. (Power BI, Tableau and QlikSense)
- Automated Workflows:** Workflows are used to enhance efficiency and address issues promptly to ensure the production line is running smoothly.
- Downtime Analysis:** Identification and analysis of downtime events, allowing for proactive measures to minimize disruptions.
- Performance Analytics:** In-depth analysis of equipment performance data to identify patterns, bottlenecks, and opportunities for improvement.
- Root Cause Analysis:** Investigation into the reasons behind equipment inefficiencies or downtime, facilitating targeted improvements.
- Integration Capabilities:** Seamless integration with other manufacturing systems and data sources such as ServiceNow, CRM, MES, PLM, SCADA, CMMS etc for a holistic view of operations.
- AR/VR Capability:** Allows for real time collaboration, enabling experts to guide and assist remotely, reducing downtime and improving issue resolution.

## Outcomes



## Technology Partners



**Request a Live Demo**

## Let's Talk

There's no better time to find out what NTT DATA can do for you. Learn more about our full spectrum of offerings – contact us today!