



## Product introduction

# Omega 365

A complete solution designed to improve  
efficiency and operations across industries.



<b>Omega 365 – Manage projects and assets efficiently</b>	<b>2</b>
<b>Core elements</b>	<b>4</b>
Organization	4
Scope of Work	4
Digital Twin	4
<b>Overview of core features in Omega 365</b>	<b>5</b>
Document Management	5
Completion Management	6
Workflow processes	7
BIM and Asset Management	8
Digital Twin in Omega 365	9
Plans and Schedules	10
Project Controls	11
Checklist	11
Daily Log	12
Meetings	12
<b>Customer Stories</b>	<b>13</b>
The Johan Sverdrup Field	13
New Stavanger University Hospital	13
<b>Omega 365 Academy</b>	<b>14</b>
<b>Cloud solution</b>	<b>16</b>

## Omega 365

# Manage projects and assets efficiently

The Omega 365 solution is designed to improve efficiency and operations in various industries, aiming to elevate industry standards and enhance efficiency and project outcomes.



### The Omega 365 system offers:

- A cohesive approach to managing projects and assets from design to operation covering all disciplines.
- A common application platform that is secure and continuously updated.
- A digital twin representative with real-time data, both for the organization and its assets.
- A shared solution – enabling agile and efficient interaction with contractors, suppliers, and other stakeholders.
- A full overview with standardized portfolio and project reporting.

The strength of Omega 365 lies in the seamless integration of all its products into a comprehensive solution. Information will be shared and reused across all modules without the need for cumbersome and costly integrations. A common interface and shared processes will simplify training and support, accelerating the long-term benefits of the solution.



#### Enhanced collaboration

Provide a centralized platform where team members can access and collaborate on data. This can enhance communication and collaboration across teams, departments, projects, and organizations.



#### Improved quality

Help ensure data quality through standardized processes for data management, including data capture, storage, and distribution. This can help minimize errors and inconsistencies in data.



#### Increased efficiency

Help reduce duplicated efforts by providing a single source of truth for your data. This can help team members work more efficiently and avoid mistakes and discrepancies.



#### Better decision-making

Offer real-time data access, making it easier for decision-makers to stay informed and make data-driven decisions. This can enhance outcomes and mitigate risk.

## Comprehensive industry support

Omega 365 supports strategies and opportunities across various industries, aiming to elevate industry standards and enhance efficiency and project outcomes.



Industrial Construction



Building Construction



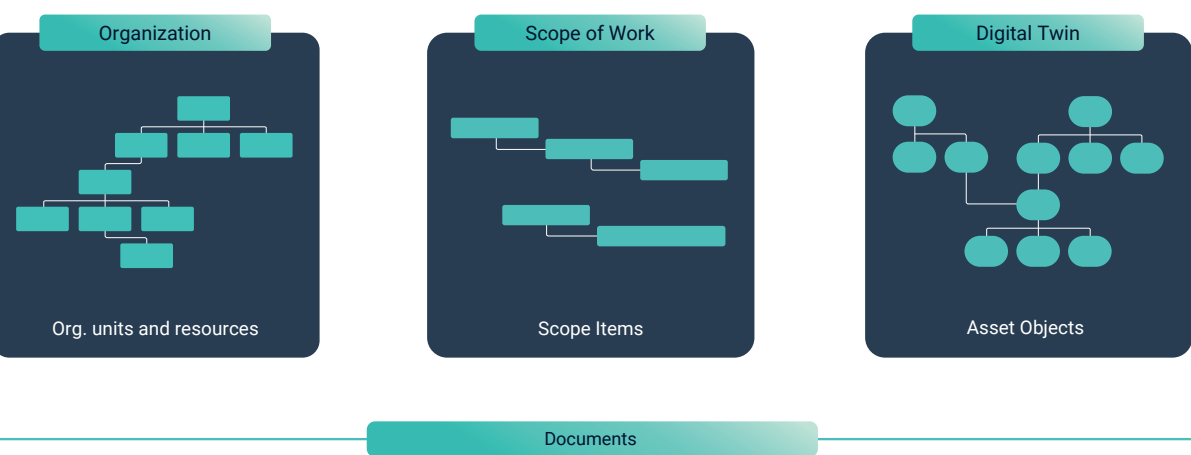
Infrastructure Construction



Facilities Management

# Core elements

Omega 365 is built upon three core elements: **Organizational Structure**, **Scope of Work**, and **Digital Twin**. These elements work together to provide a structured overview of the organization, enabling efficient support for activities and value creation.



Together, these elements form a Common Data Environment that enhances data accessibility, consistency, and security throughout the organization. This environment encourages collaboration, sharpens decision-making, and increases operational efficiency, making Omega 365 a crucial tool for contemporary, data-focused businesses.

## Organization

Omega 365's organizational structure is a flexible, hierarchical setup designed to accommodate diverse business needs. It facilitates customization of unit types for various entities such as projects and contracts, with the flexibility for easy adjustments. Data within these units is efficiently organized, ensuring secure, role-based access and enhancing operational efficiency and agility.

## Scope of Work

Scope Items represent any work to be completed, orchestrating planning, execution, and documentation. Each item is structured around a defined process with essential steps, responsibilities, and fields. Display options include Gantt, Takt, or Control plan views, with import/export from MS Projects or Primavera, ensuring projects are managed efficiently and objectives are met.

## Digital Twin

Omega 365's digital twin provides a comprehensive and cohesive digital representation of your organization and its assets, organized from design to operations in a multi-linked hierarchical structure. It goes beyond physical representation by including operational data like resources, processes, documents, and risks. The object hierarchy links all these aspects to streamline planning and improve maintenance and lifecycle oversight, enhancing overall operational efficiency.

# Overview of core features in Omega 365

Omega 365's core features are designed to elevate project and asset management, including features for document management, completion management, BIM, digital work processes, and project controls.

## Document Management

Efficiently manage project or company documentation, from submittal through review and approval to distribution.

With Document Management, you can manage documents and models in accordance with requirements and standards, ensuring compliance and maintaining workflow in the project or company.

- Locate documents in various ways: General search, metadata search, content search, and advanced search.
- Review and approve versions. Release revisions. Accessible history and audit trail.
- Co-author Office 365 files and markup of PDFs.
- Follow-up document requirements for operations.
- Define required documents, when they should be received, and from whom.
- Distribute internally and/or externally, either automatically or manually.
- Receive documents from contractors directly in the system.
- Integrate with other Omega 365 modules to facilitate cohesive data flow and enable efficient cross-functional operations.



**Workflows**  
Workflows for actions, clarifications, deviations, etc.



**Assets**  
Any tag/object which requires documentation



**Requirements**  
Client or DFO/LCI documentation requirements



**Risks**  
Relevant documentation to mitigate or to be updated



**Activities**  
Documents needed to execute, and to document the activity



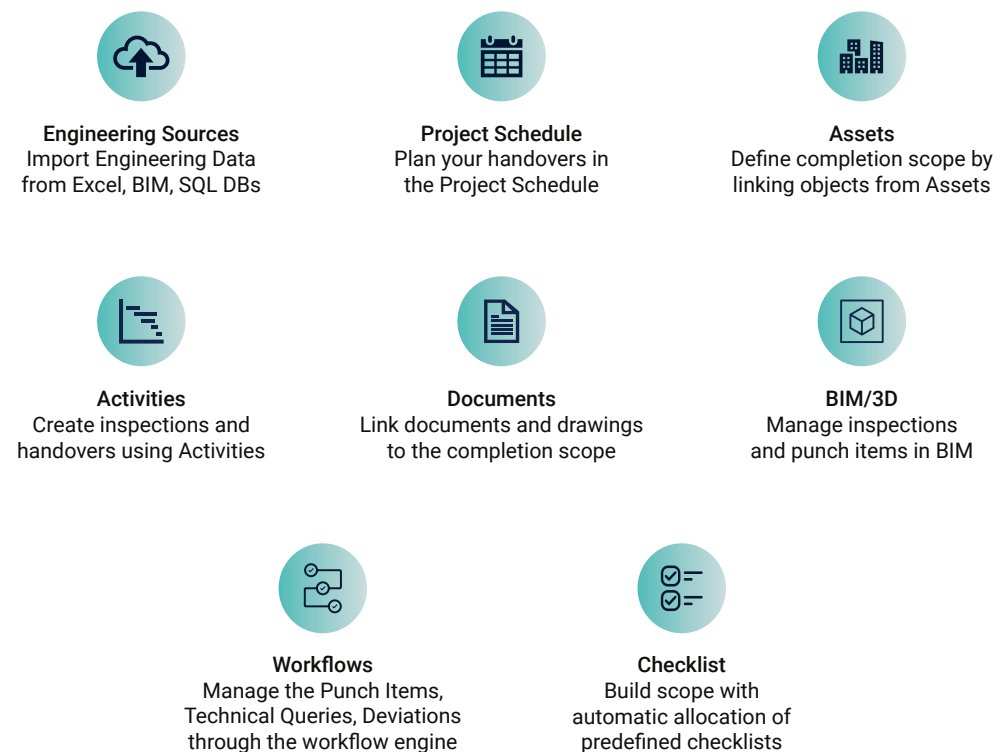
**BIM/3D**  
Documents available in model

## Completion Management

The goal of Completion Management is to ensure that the ordered product quality reaches the customer in a structured manner and according to plan.

To achieve this goal, it is crucial to establish a shared strategy for testing and handover during the early project phases. This ensures seamless and timely handovers of predefined packages, guaranteeing a smooth transfer of scope between the construction, commissioning, and operation phases.

- Import data from sources such as Excel, CSV, and BIM models. Support change control of imported data.
- Build scope with automatic allocation of predefined checklists based on rules and object types.
- Define scope by assigning objects to completion activities.
- Utilize the integrated workflow-based punch module.
- Complete checklists and add/clear punch items using the Field Inspection App.
- Clear punch items and conduct inspections through the 2D/3D BIM viewer.
- Manage pending scope using Activity Skyline, Scope Explorer, Reports and Dashboards.
- Test and handover all objects in the Asset register.



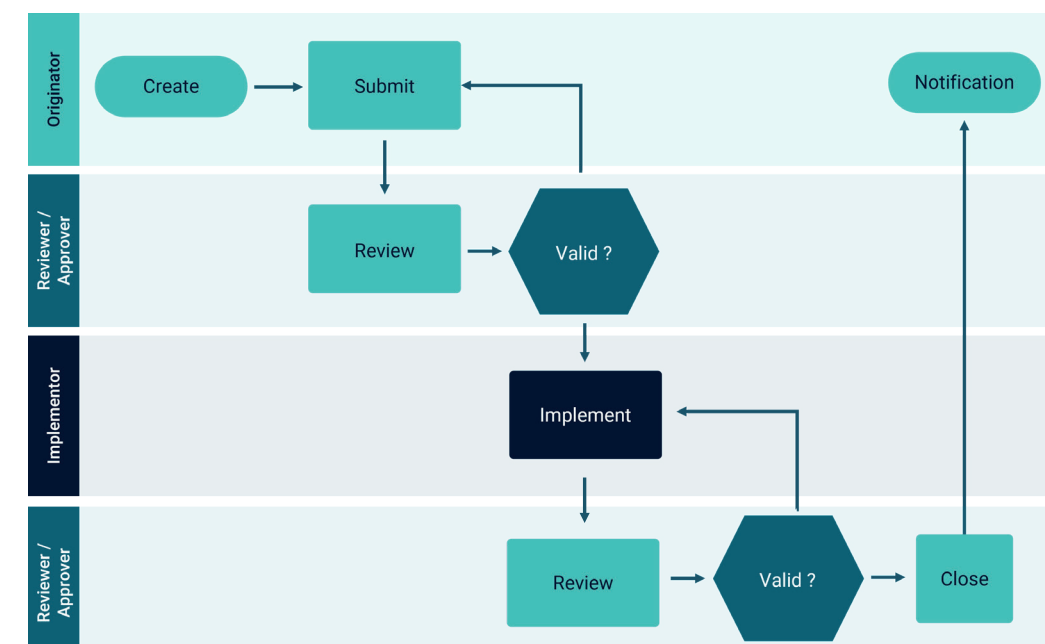
## Workflow processes

Omega 365 features a built-in Workflow process tool that enables organizations to define their own digital Workflows and conduct task processing in a structured manner across organizational units.

### The Workflow processes:

- Ensures standardized work task execution.
- Engages the right people at the right time.
- Provides a comprehensive overview of all tasks, including responsible parties and statuses.
- Highly flexible for easy configuration of individual work processes.
- Efficient work preparation with material needs.
- Provides a closed area for internal communication.

The solution offers a range of predefined process templates for key activities such as Management of Change, Technical Queries, Interface Clarifications, Findings (Non-Conformances, Recommendations, Deviations), Punch Items, Inspections, Audits, Meetings, Risk Mitigation, and Asset Handover. Each template is fully customizable to meet specific needs. Customers can also create new Workflows, adapting our solution to fit unique operational demands, ensuring flexibility and efficiency.



\*Example workflow process

## BIM and Asset Management

Omega 365 ensures a holistic approach to asset management by offering all essential tools within a single, user-friendly platform. With efficient data access and management, it supports informed decision-making and fosters the optimal utilization of assets, spanning from planning to operation and maintenance phases.

### Data-driven Visualization

Data-driven BIM provides a single source of truth for data throughout the asset's lifecycle. It is connected to all data in Omega 365.

### Asset Management

Manage the entire lifecycle of an asset, from capital planning, procurement, installation, performance, maintenance, compliance, risk management, to asset disposal. BIM is an integrated solution for Facility Management (FM), emphasizing efficiency and clarity in asset monitoring. Central to its functionality is lease management, enabling streamlined planning, tracking, renewals, and compliance.

### Operations and Maintenance

Manage both proactive and reactive maintenance activities along with a streamlined workflow for ad-hoc actions. Integrated with a BIM view, the solution provides a unified visual overview, ensuring informed decisions and comprehensive resource monitoring. Empower field operators to receive real-time task assignments, perform maintenance, and easily report improvements while on the go.

### Project

Maintain control over the subprocesses of strategic development, project establishment and execution, systematic completion, and handover by having a clear and straightforward reporting of the entire portfolio or individual projects.

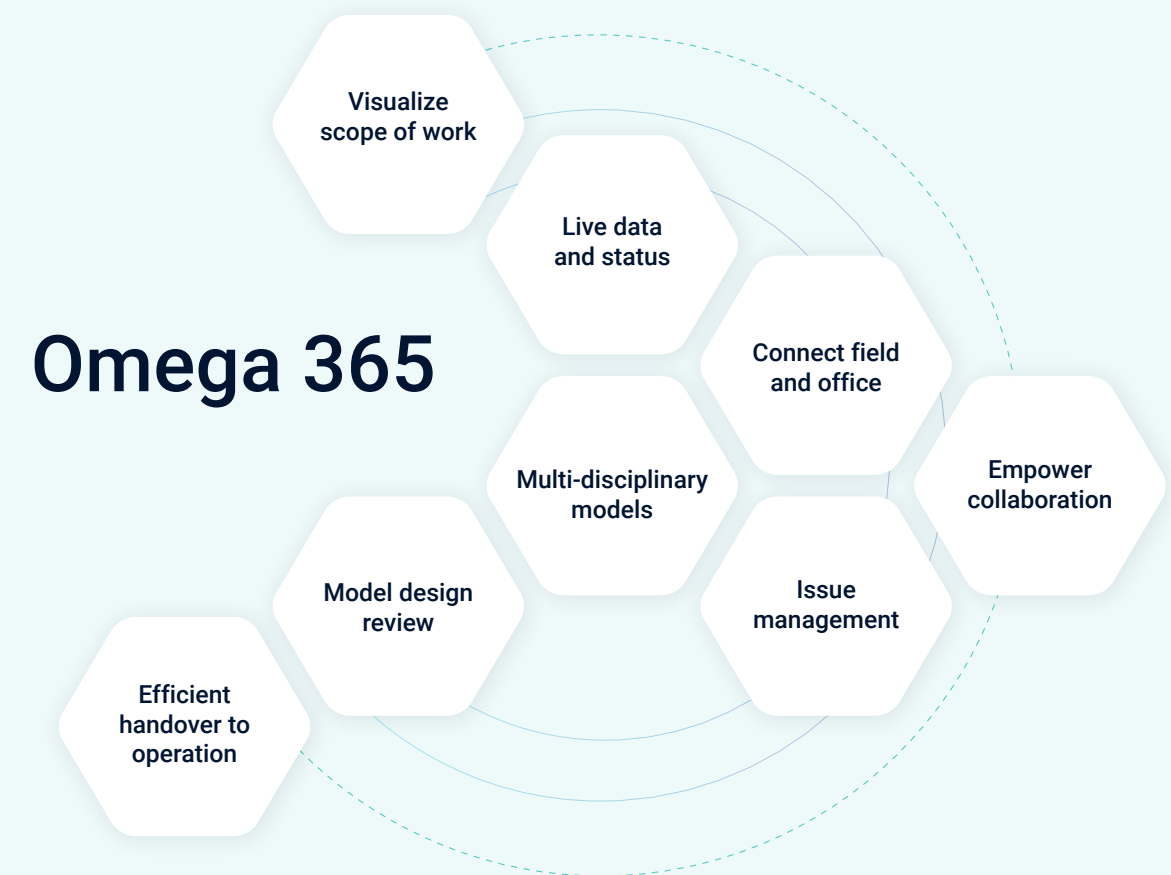
### Collaboration

Facilitate multidisciplinary collaboration across geographically dispersed teams. Everyone on a team knows where the data is located.



## Digital Twin in Omega 365

Omega 365's digital twin is a comprehensive and cohesive digital representation of your organization and its assets. It surpasses a simple physical representation to encompass key operational data within a database such as resources, processes, documents, incidents, risks, and activities.



The digital twin is designed to be user-friendly, ensuring accessibility and administrative ease. By providing a single source of truth, it ensures the consistency and the reliability of information throughout the organization.

As an integrated, data-driven solution, Omega 365's digital twin streamlines information flow and enhances decision-making processes. Essentially, it acts as a holistic reflection of your organization and its assets, enabling more effective and efficient management of operational aspects.



## Plans and Schedules

The ability to create and track activities is a vital feature in Omega 365. These can range from simple tasks assigned to a single person with a deadline to more intricate activities involving roles, workflows, checklists, and interaction among different contributors.

When multiple activities need to be included in a project or a planned main activity, the planning module can be used for network planning. In this context, a typical Gantt chart is used to visualize the schedule along with the visualization of dependencies and the critical path. It is easy to change activities, add new ones, and, most importantly, maintain multiple versions of a plan for comparison.

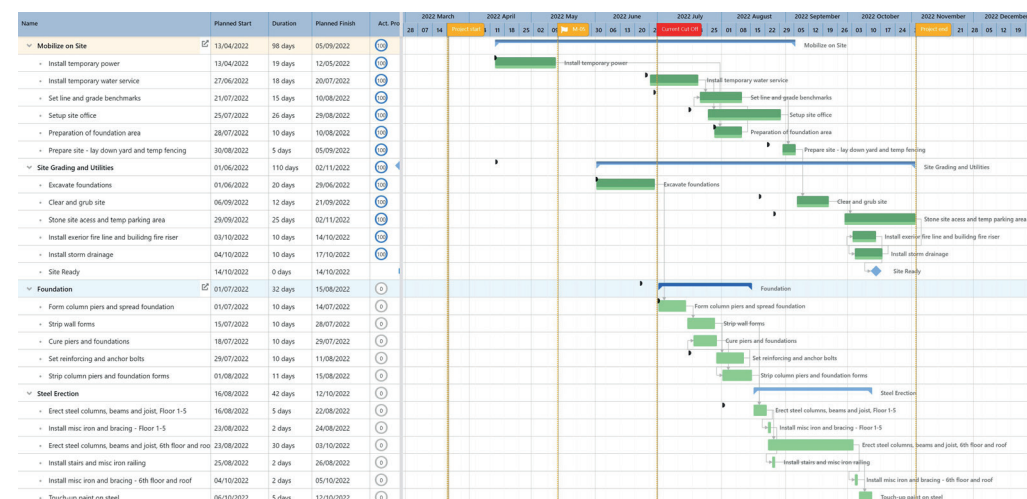
The solution also provides the capability to generate a PDF version of the schedule and export to or import from Microsoft Project, Safran, or Primavera.

### Scheduling

With an online solution, teams always know the project progress. Create scenarios to analyze and adjust a what-if version of your schedule without affecting your current schedule. With a fully integrated solution, you can connect project activities, milestones, cost, resources, risks, and document delivery to your project plan.

### Takt Planning

With Takt Planning you can easily ensure that activity prerequisites are met, activities are executed on time, and obstacles are handled increasing the chance of completing the project on time.



## Project Controls

Omega 365, with its extensive set of modules, offers a robust and efficient solution for Project Controls, making it a vital tool for maintaining your project's contracts, cost, resources, and risks. This suite of tools serves as a one-stop solution for all project control needs, facilitating a holistic approach to project management.

### Key Features

- **Cost Management** - Predict, understand, and constructively influence project time and cost outcomes. This feature utilizes well-known processes for planning, estimating, budgeting, managing, and controlling costs.
- **Contract Administration** - Register, maintain and monitor project commitments, such as contracts, sub-contracts, purchase orders, frame agreements, and call-offs. Systematizing this data provides the organization with unique control of the categorized commitments, contract variations, contract milestones, and implementation plans, as well as actuals for the contracts.
- **Resource Management** - The resource module enables effective workforce planning and utilization.
- **Risk Management** - Maintain an overview of all opportunities and threats. This ensures a shared understanding of risks, the process, and the responsibilities among the organization and stakeholders. This qualitative tool describes, logs, and communicates risks, allowing users to access relevant risks and corresponding mitigating actions.
- **Incident Management** - Provides an efficient and systematic approach to handle unexpected situations, reducing their potential impact on project timelines, costs, and resources.

## Checklist

Omega 365's Checklist feature offers a systematic, organized, and comprehensive approach for executing and documenting tasks in meetings, workflow processes, and various activities, including completion, inspections, installations, verifications, preservations, and audits. It is a central and re-usable component of the platform.

Users can build checklists in the checklist library and distribute them throughout the organization.

## Daily Log

The Daily Log is a crucial tool for project managers, HSE coordinators or others conducting reviews or inspections. It serves as a logbook and observation tracking tool. The activity can be described with various information:

- HSE (Health, Safety, Environment) and Quality observations.
- Map reference (optional if this should be logged automatically).
- Weather conditions.
- Upload images or other files (drag and drop).
- Related data: Workflows, Incidents, Objects (Tag).

This approach empowers the responsible party to directly perform important activities and streamline follow-up tasks. It also provides a convenient way to record important information.

## Meetings

Meetings provides a solution to ensure effective and well-organized meetings within projects or the organization.

- Meetings can be created as standalone events or as recurring series.
- Participants receive invitations (shown in email and calendar).
- Agendas can be copied from templates or previous meetings.
- Agenda items can be prepared with attached information, and responsibilities assigned to different agenda items.
- Meetings seamlessly integrate with other platform products, offering a one-stop-shop live view of the actual data corresponding to the meeting agenda item, rather than just a description. This means that when you link to specific data, like a Risk, Document, Incident, Workflow etc., it is not a static view; you will see the live, updated information.
- Decision points and actions are logged, and meeting minutes are distributed to participants.

## Customer Stories

With over three decades of experience, Omega 365 is a trusted partner in offshore development and major construction projects. Our expertise ensures project KPIs are met, thanks to our focus on practical solutions and digital twin technology.

Over the past eight years, we have expanded our involvement in large-scale construction initiatives. We provide holistic solutions grounded in our deep understanding of project management needs, further strengthened by the practical application of digital twin technology.

### The Johan Sverdrup Field

Omega 365 has provided project management systems and expertise to Equinor since the early 1990s. Our contributions include their latest major development project, the Johan Sverdrup field (>10 billion EUR), which stands as one of the largest developments on the Norwegian Continental Shelf since the 1980s.

“ Offshore completion is a complex job that requires interaction across many disciplines and departments. Omega 365 has provided a digital project arena for interaction, based on experiences from previous projects. This is a key part of securing control and reducing the costs of field development, through real digitization.

Thomas Sundsøy, Project Implementation Manager at Omega 365 Solutions



See the complete Customer Story here:



### New Stavanger University Hospital

When Sykehusbygg embarked on the construction of the New Stavanger University Hospital, they opted for Omega 365's project management tool to monitor and manage their project. Project Director Kari Gro Johanson shares her experiences in utilizing Omega 365.



“ We have taken all the modules on board, from BIM, Document and Completion management to Meetings and Blogs, and all our 90+ contractors must use the system. If a worksheet or email is not registered in the system, it's not valid.

Kari Gro Johanson, Project Director at Sykehusbygg

See the complete Customer Story here:

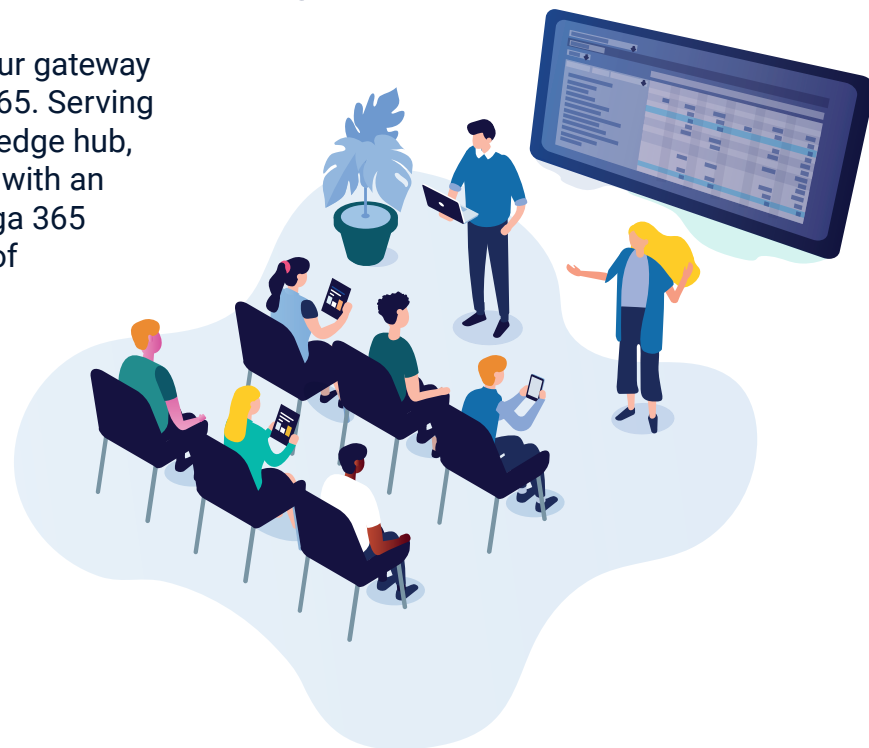




Learn and gain knowledge through

# Omega 365 Academy

Omega 365 Academy is your gateway to learning about Omega 365. Serving as a comprehensive knowledge hub, the Academy equips users with an understanding of the Omega 365 platform through an array of learning resources.



Our e-learning courses, instructional videos, how-to documents, and best practice blog stories offer users the knowledge to harness the platform's capabilities for improved collaboration, efficiency, and quality in their operations. Our video resources are also available on YouTube for a versatile learning experience.

### Omega 365 Docs

A central repository of user guides, offering practical instructions to effectively utilize the platform's features.

### Omega 365 Blogs

A dedicated space for sharing essential platform updates and practical use-cases. It plays a crucial role in Omega 365's ongoing commitment to keep users informed and engaged. System experts share best practice stories — real-world examples of how Omega 365's features are effectively applied. These stories offer practical insights and lessons that can be beneficial for other users.

### Omega 365's YouTube channel

A visual guide to understanding and effectively using the platform. It offers a range of video content designed to introduce and explain the various features and modules within the Omega 365 platform.

### Omega 365 e-learning course

An in-depth educational resource specifically designed to provide users with a structured approach to learning the Omega 365 platform. These courses offer a comprehensive understanding of the different modules within Omega 365, catering to various user roles and needs.



Visit our  
YouTube channel

Curious about Omega 365?  
Check out our YouTube  
channel for both introductory  
and detailed videos.



# Cloud solution

A cloud-native, secure, and continuously updated solution, available from anywhere in the world.



- An isolated, single-tenant solution ensures your data is completely segregated from others, enhancing security and privacy.
- We are dedicated to constant improvement, adapting to customer needs. Weekly updates keep our solution innovative.
- Data encryption at rest, using platform-managed keys, adds an extra layer of security, safeguarding your data even when it's not actively in use.
- Industry-standard encryption secures all data in transit, guarding against unauthorized access as it moves from one location to another.
- Online and offline backup options provide comprehensive data protection and recovery in any situation.
- Geo-redundant storage and backup capabilities that safeguard your data by storing copies in multiple geographical locations, ensuring continuous access and protection against data loss.
- Well-established protocols manage security, disaster recovery, backups, alerts, and performance, ensuring seamless and safe platform operation.
- A transparent solution provides customers with valuable insights into their infrastructure, issues, availability, and activities, facilitating informed decision-making and efficient resource allocation.
- Omega 365 holds certifications in both ISO 9001 and ISO 27001.

Join us!



Big enough to deliver - small enough to care