



Collaborative Work Management in Teams

Teams is a powerful collaboration platform. It is the Hub for communication and teamwork in many organizations. OnePlan provides a powerful work management solution in Teams to visibility into all work across the organization. We provide the power to make Work Management simple.

Visualize All Work in Your Portfolio

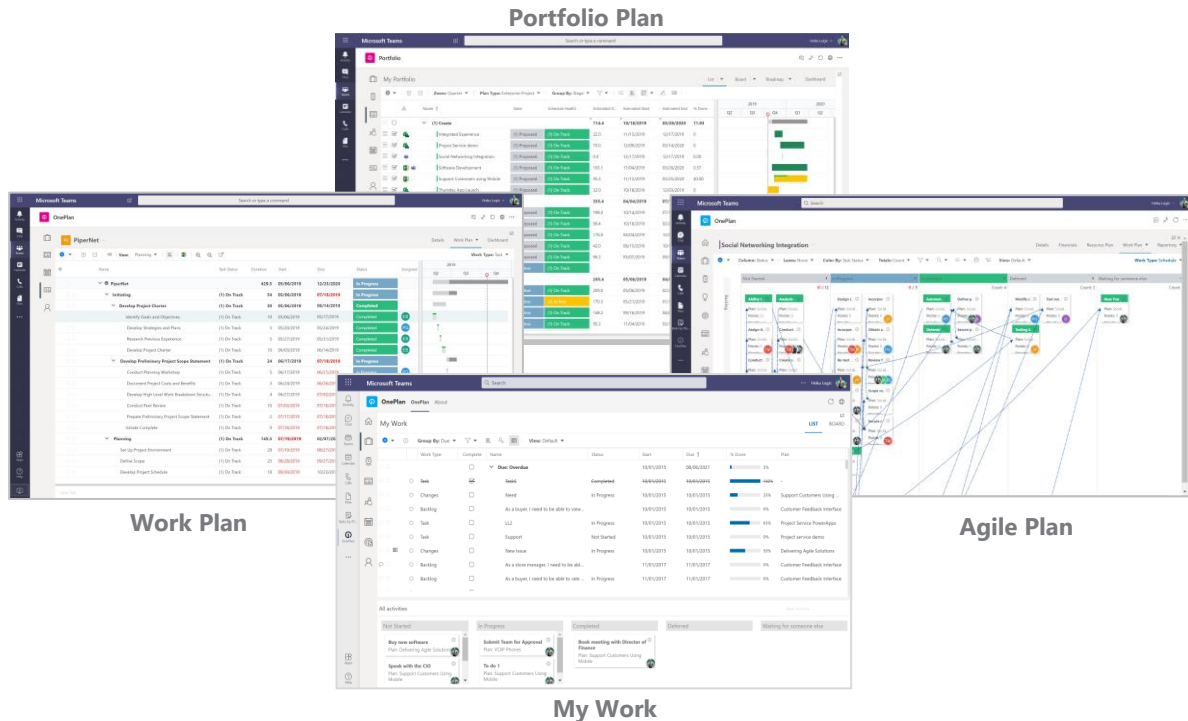
Create a complete list of current work items, organized in a hierarchy and filter, group and sort as needed to better understand the Portfolio.

Assign Resources and receive updates across work items

Assign resources to tasks, backlog items, issues, risks and changes and provide them with a single view to update.

Execute the Way You Work Best

Support both traditional task management and agile methodologies for planning and assigning work across your teams.

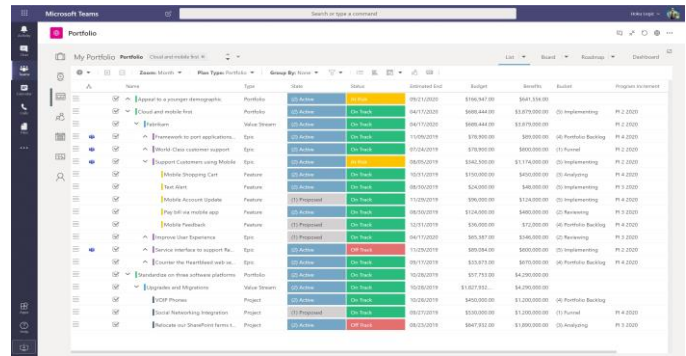
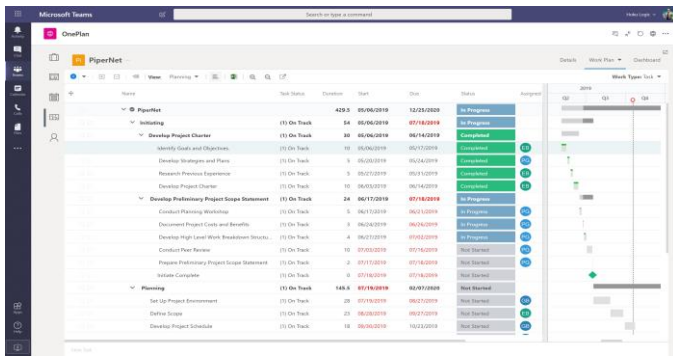


Collaborative Work Management in Microsoft Teams

This solution supports multiple work management approaches all within the same environment. You can schedule projects in a traditional approach with tasks or following an agile approach with backlogs and sprints. Resources can status all their work items in a single location while management analyzes and prioritizes the portfolio.

Portfolio Views and Prioritization

Create views that organize your work into a configurable hierarchy. Score and rank projects using your scoring metrics. Filter, group and sort plans based on a wide range of custom fields.

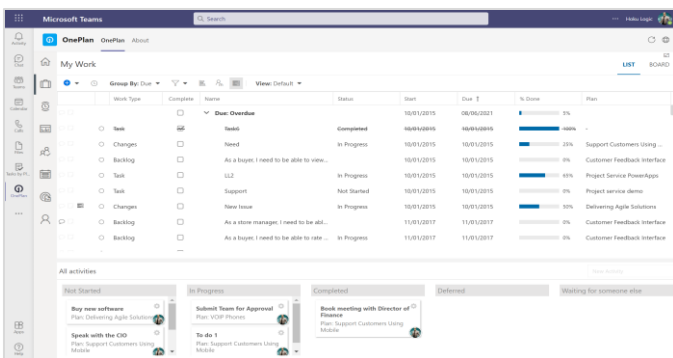
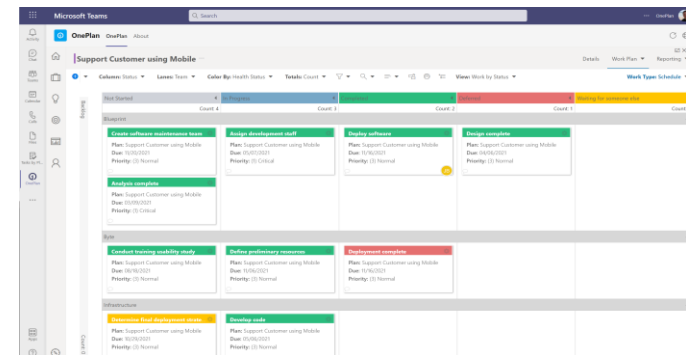


Schedule your Project and Work

OnePlan seamlessly integrates with Project and Project for the web. Your team can use their tool of choice and the project is included in the portfolio. Assigned tasks can also be updated in Teams.

Plan using Backlogs and Sprints in Teams

Schedule using an agile approach with backlogs, Sprints and boards to prioritize and assign work items. Drag and drop backlog items into a Sprint and view all tasks in a board view to prioritize and coordinate teams.



Manage all forms of work

Assign work and get updates from your team across tasks, backlog, issues, changes. Resources have a single view of all their assignments.

Gain Insights Through Reporting and BI

Provide unprecedented visibility with rich business insights. Make informed, data-driven decisions with role or team-based reporting across the portfolio.

