



FabOps™ Intelligence Platform

Abdulrafiu Izuafa
Senior AI/ML Consultant

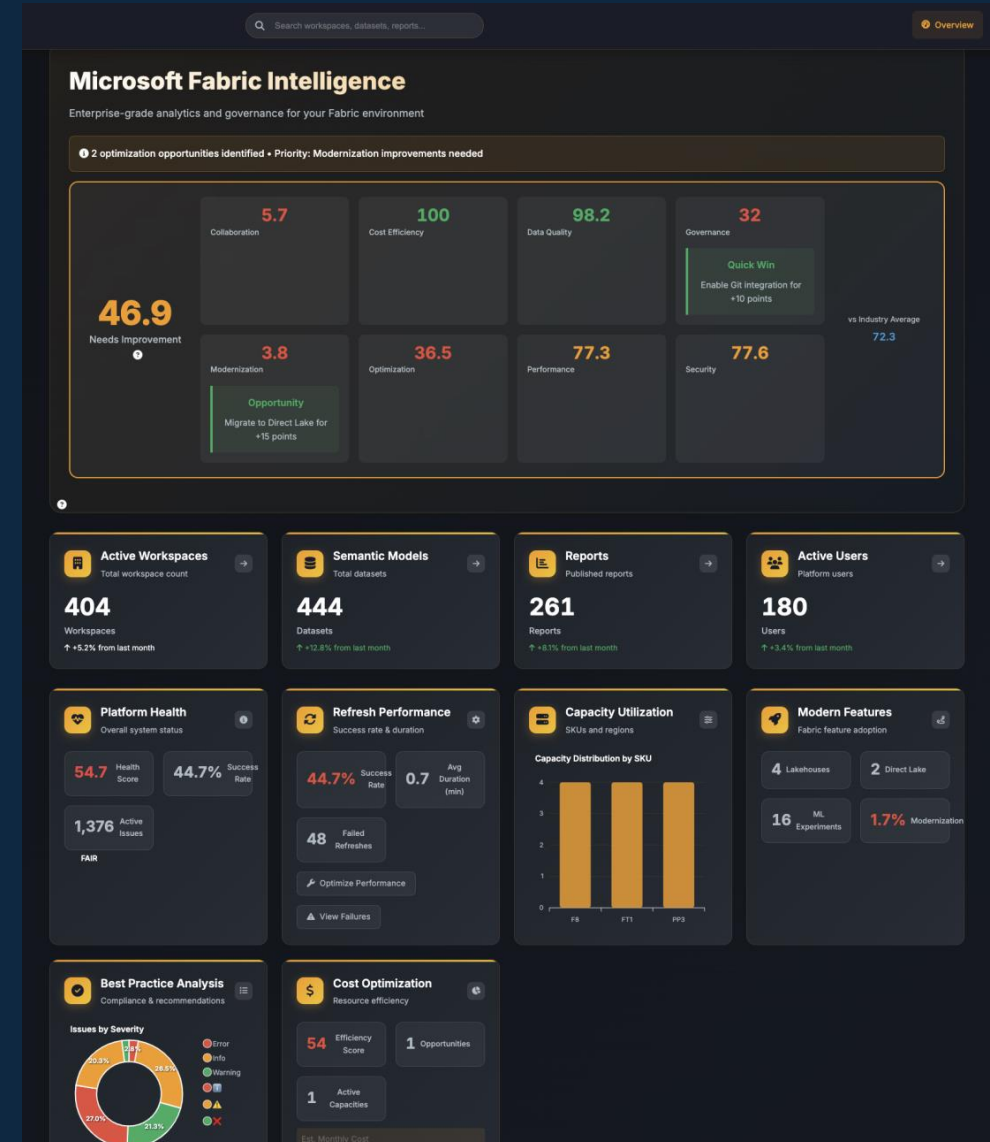


FabOps™ Intelligence Solution

- **Comprehensive telemetry collection** across 200+ metrics
- **AI-powered insights** with Azure OpenAI integration
- **Real-time monitoring** and performance optimization
- **Enterprise governance** with automated compliance
- **Advanced analytics** for cost optimization and modernization

Developed by Onyx Data - Your Microsoft Fabric Intelligence Partner

1



The Problem



Limited Visibility: Manual governance audits and fragmented insights



Performance Issues: Refresh failures and capacity bottlenecks go undetected



Cost Overruns: No visibility into capacity consumption patterns



Modernization Gaps: Slow adoption of Direct Lake and advanced features



Compliance Risks: Manual tenant settings management and policy violations

Market Need



78% of organizations struggle with Fabric governance at scale



6 hours weekly spent on manual capacity management per admin



30% capacity waste due to poor optimization and oversight



Organizations expect AI-driven insights and automated optimization



Modern enterprises demand comprehensive analytics platform visibility



Solution

4



AI-Powered Analytics: Advanced telemetry processing with 200+ metrics



Unified Dashboard: Complete Fabric environment visibility in one place



Advanced Search: Quick workspace, dataset, and performance analysis



Secure Web Access: Available anywhere with enterprise-grade security



Azure-Native: Scalable, reliable, and Microsoft-compliant architecture

Architecture



Frontend: Modern web application (Flask, Azure App Service)



Backend: Fabric Lakehouse for secure telemetry storage



Data Engine: Microsoft Fabric notebooks for collection & processing



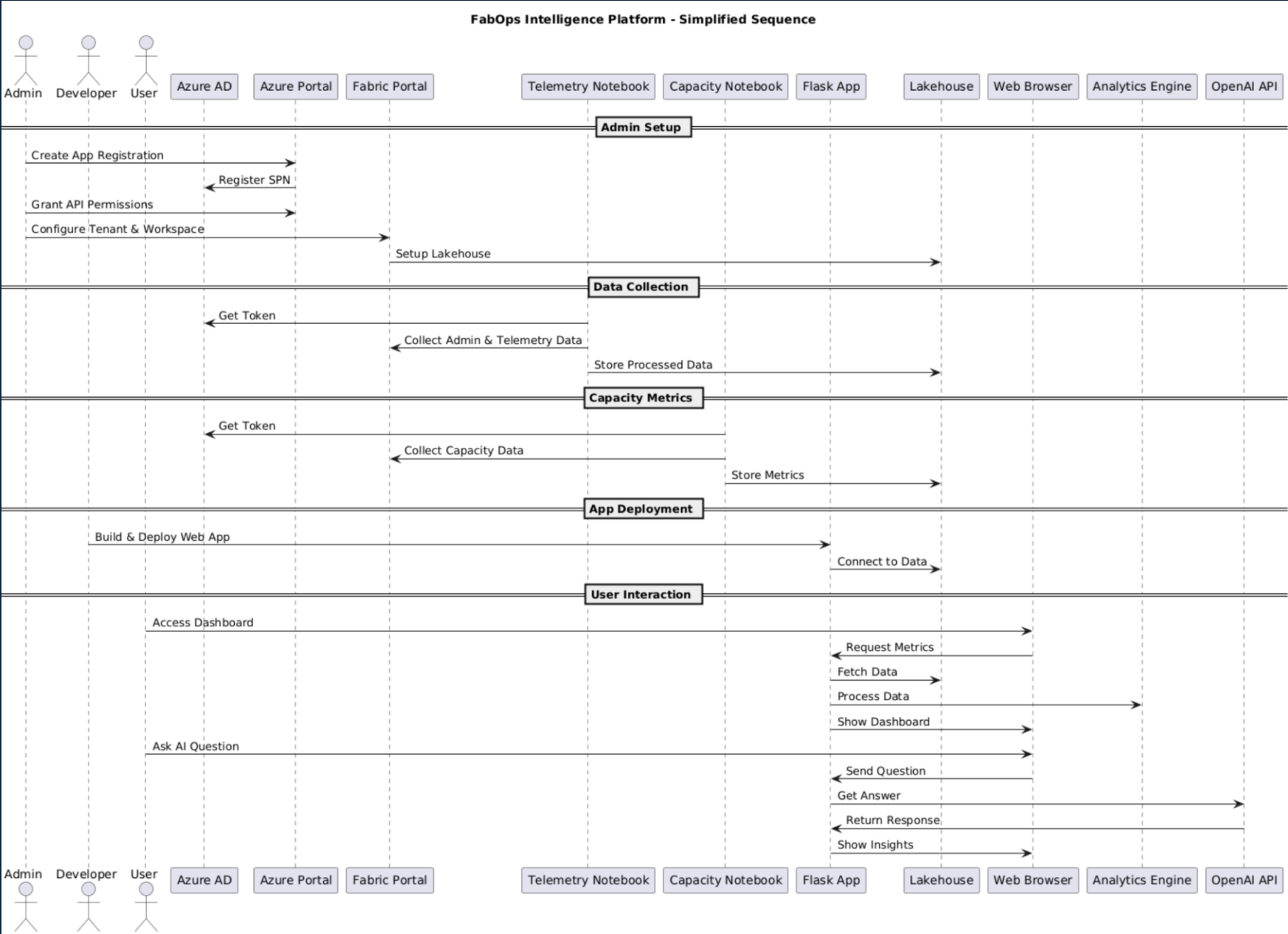
Security: Azure AD integration with role-based access



AI Layer: Azure OpenAI for intelligent insights and recommendations



Architecture





Data Collection Framework

7



Administrative Data: Workspaces, capacities, users, domains, tenant settings



Performance Metrics: Refresh history, success rates, duration analysis



Dependency Mapping: Cross-workspace relationships and data lineage



Modern Features: Lakehouses, warehouses, Direct Lake adoption tracking



Capacity Analytics: CU consumption, throttling, and cost allocation



8

Advanced Analytics Engine

200+ Metrics Across 8 Categories

Governance Excellence: Domain coverage, Git integration, compliance scoring

Performance Optimization: Refresh success rates, optimization opportunities

Modernization Progress: Direct Lake adoption, feature utilization tracking

Security Posture: Tenant settings compliance, sharing analysis

Cost Efficiency: Capacity utilization, waste identification, optimization

Collaboration: Workspace access patterns, user engagement analytics

Data Quality: BPA compliance, model health scoring

Operational Excellence: System uptime, error tracking, maintenance alerts

AI-Powered Insights



Natural Language Queries: "How can I improve my refresh performance?"



Intelligent Recommendations: Prioritized optimization opportunities



Contextual Analysis: AI understands your specific Fabric environment



Continuous Learning: Recommendations improve with usage patterns



Real-time Responses: Instant insights from your telemetry data



Dashboard & Visualization

10



Enterprise Readiness Score: 0-100 rating across 8 dimensions



Interactive Dashboards: Overview, governance, performance, cost analytics



Data Explorer: 50+ tables with advanced filtering and search



Time-series Analysis: Trend visualization with anomaly detection



Drill-down Capabilities: From high-level metrics to detailed analysis

Azure Infrastructure Costs Overview



Core Infrastructure Components:



Azure App Service (B2 Plan): ~\$73/month



Microsoft Fabric Capacity (F8):
~\$1,267/month



Azure OpenAI Service: ~\$50-200/month
(usage-based)



Total Estimated Monthly Cost: \$1,390 -
\$1,540

Microsoft Fabric Capacity Breakdown

F8 Capacity - Recommended for Production

- **Capacity Details:**
- **8 Compute Units (CUs)**
- **Pay-as-you-go:** \$0.18/CU/hour
- **Monthly calculation:** $8 \text{ CUs} \times \$0.18 \times 730 \text{ hours} = \$1,051/\text{month}$
- **Reserved (1-year):** 40% discount = **\$631/month**
- **Reserved (3-year):** 60% discount = **\$420/month**

Alternative Options:

- **F2 (Development):** \$263/month PAYG, \$158/month reserved
- **F4 (Small Production):** \$526/month PAYG, \$316/month reserved
- **F16 (Large Production):** \$2,102/month PAYG, \$1,261/month reserved

Azure App Service Costs

Web Application Hosting

- **B2 Plan (Recommended):**
- **2 vCores, 3.5GB RAM**
- **Monthly Cost: \$73.00**
- **Features:** Custom domains, SSL, auto-scaling
- **99.95% SLA**

Alternative Plans:

- **B1 (Basic):** \$36.50/month - 1 vCore, 1.75GB RAM
- **S1 (Standard):** \$73.00/month - Same as B2 but with staging slots
- **P1v2 (Premium):** \$146.00/month - Enhanced performance

Benefits & ROI

For IT Administrators:

40-60% improvement in refresh performance

30% reduction in capacity waste

80% reduction in manual governance tasks

For Business Users:

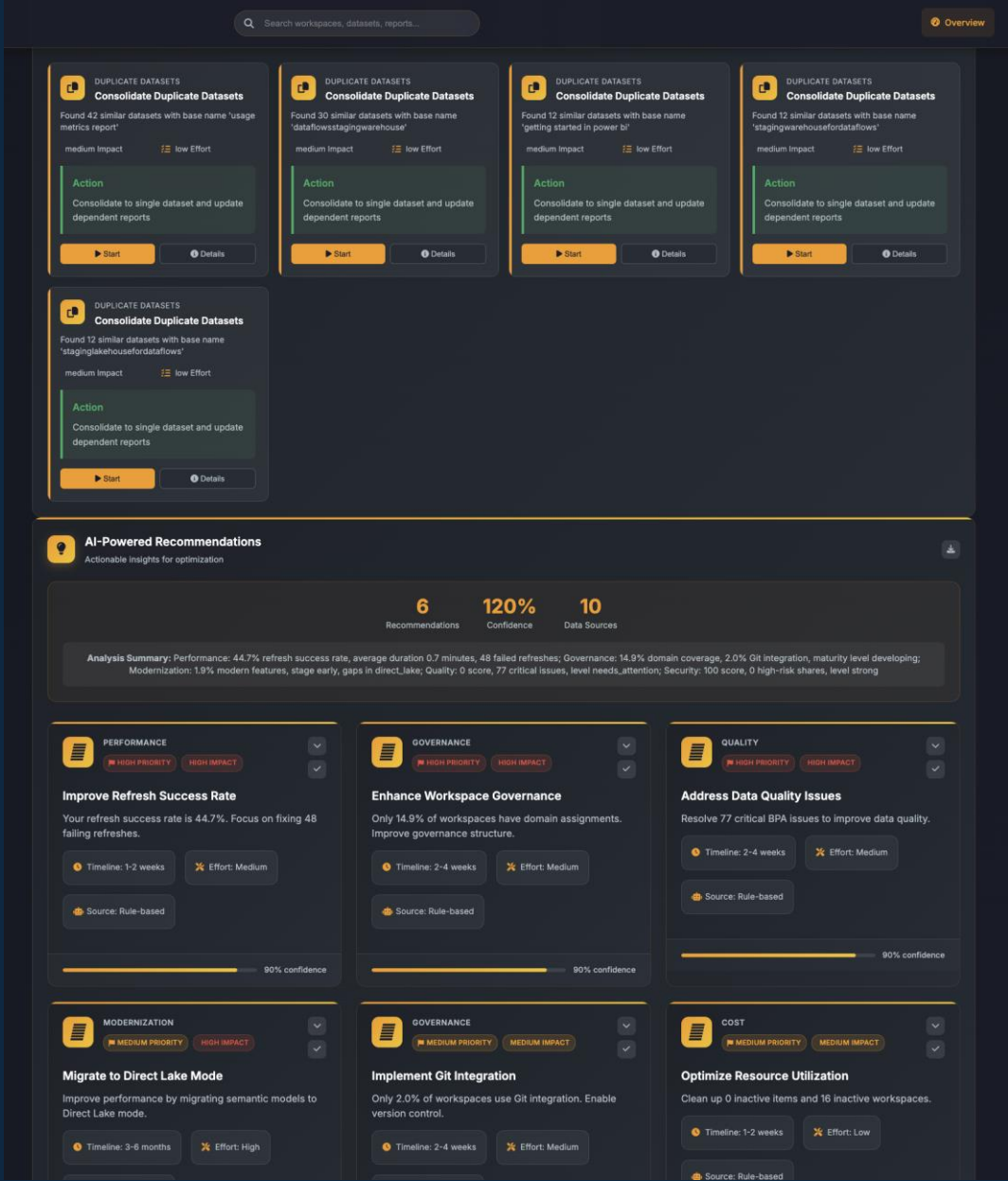
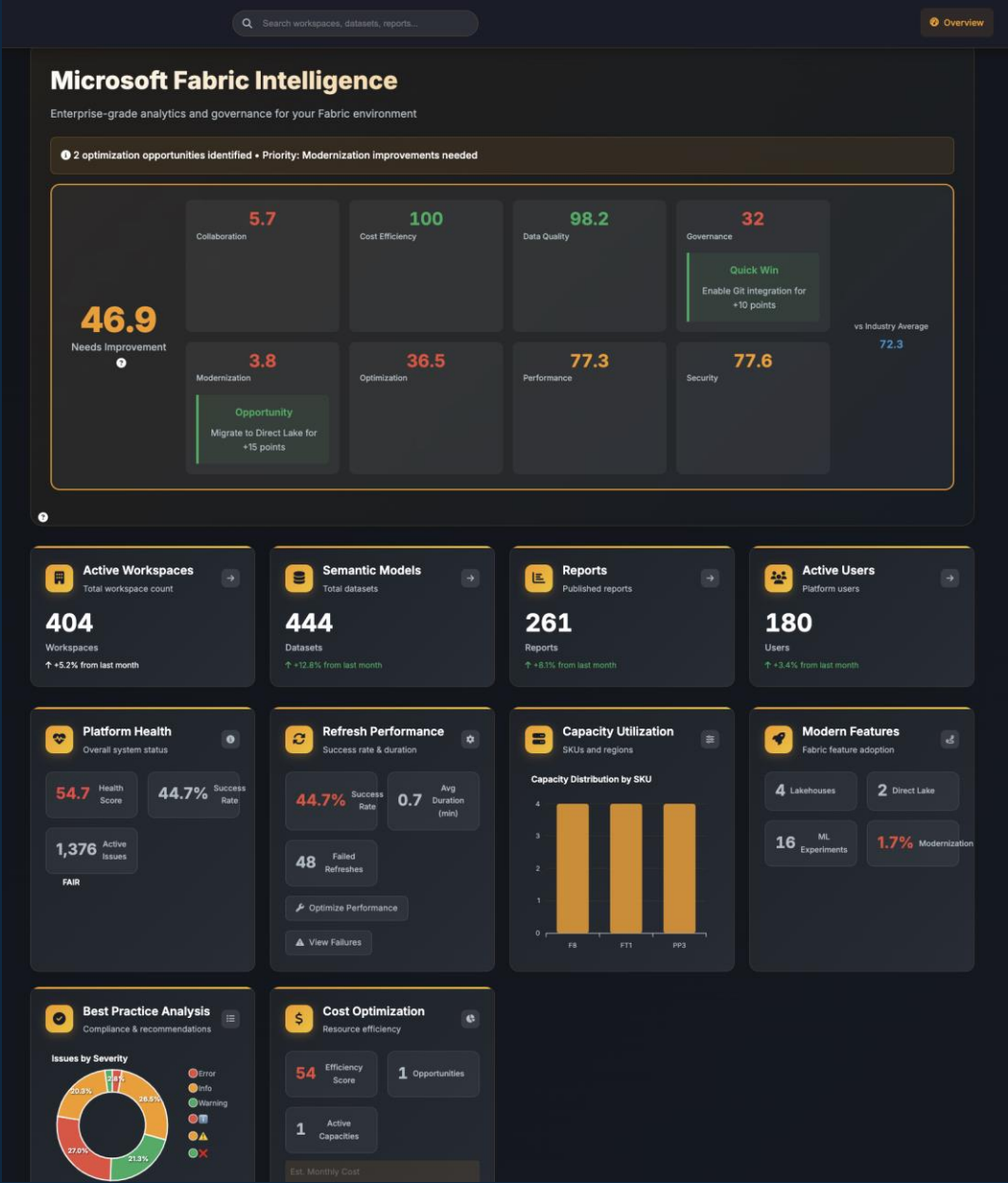
Faster report performance and availability

Reduced downtime and service interruptions

Enhanced data quality and reliability

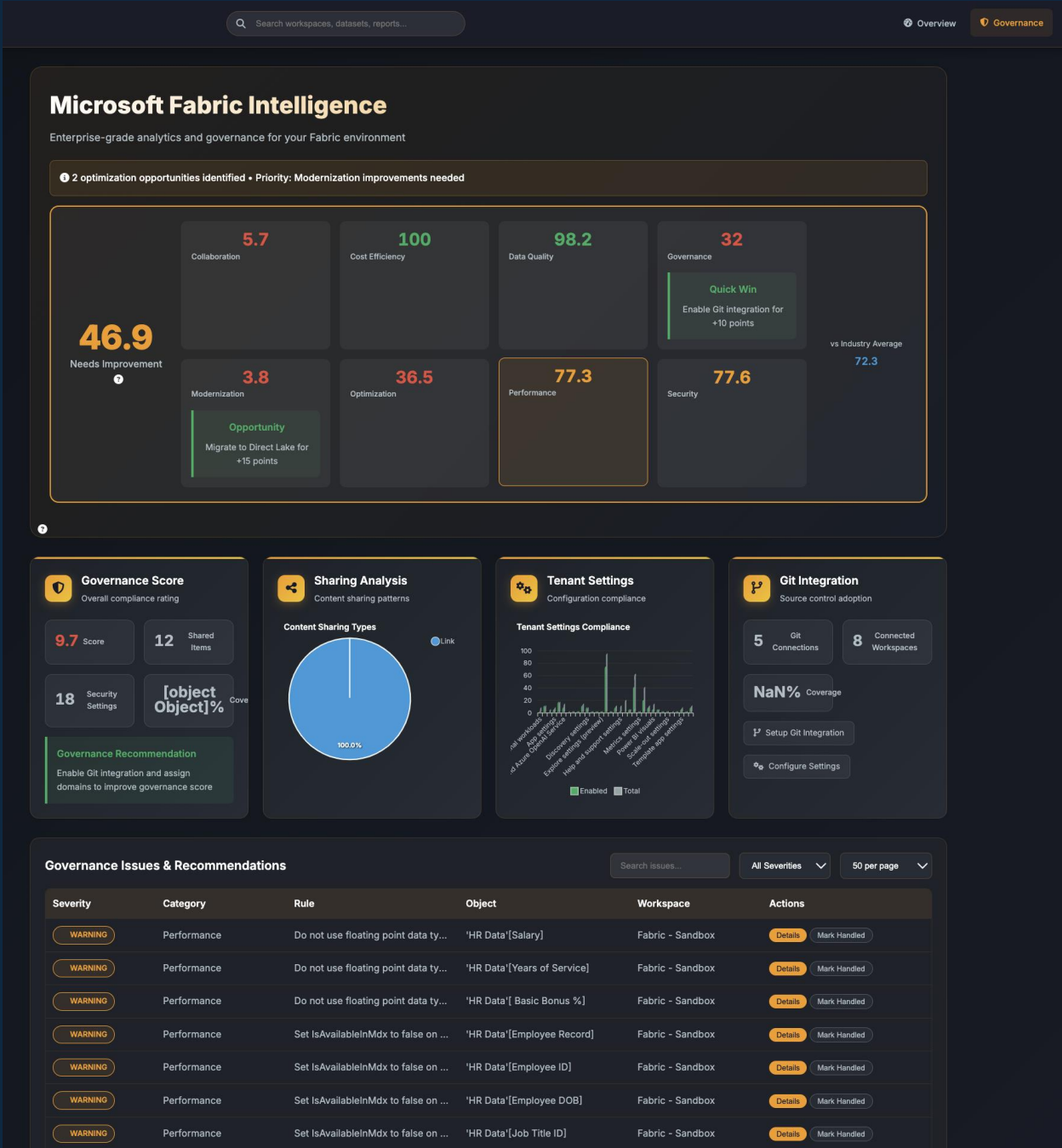


Overview
Tab





Governance Tab





Performance Tab

Microsoft Fabric Intelligence

Enterprise-grade analytics and governance for your Fabric environment

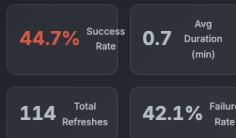
2 optimization opportunities identified • Priority: Modernization improvements needed



?

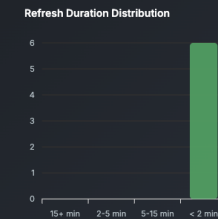
Performance Overview

System health metrics



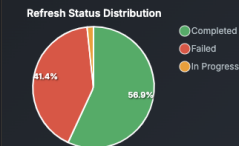
Refresh Trends

Performance over time



Failure Analysis

Error patterns and trends



Dataset Efficiency

Size and usage optimization



Refresh Performance Details

Search refreshables...

All Status

50 per page

Item Name	Status	Duration	Last Refresh	Workspace	Actions
Housing Intelligence Report	FAILED	--	--	None	Details Retry
Sales_Ledger_Report_v1	FAILED	--	--	None	Details Retry
Prediction report for ML - Webinar Deploye...	FAILED	--	--	None	Details Retry
Onyx Data Global Sales Demo	FAILED	--	--	None	Details Retry
Onyx Data - Product Performance Report ...	FAILED	--	--	None	Details Retry
Power BI PyCaret Demo	FAILED	--	--	None	Details Retry
Regression report for Housing Price Test(H...	FAILED	--	--	None	Details Retry



Costs Tab





Modernization Tab

Microsoft Fabric Intelligence

Enterprise-grade analytics and governance for your Fabric environment

2 optimization opportunities identified • Priority: Modernization improvements needed



1

Modernization Score

Fabric feature adoption



Modernization Status
Your Fabric environment is Beginner in modernization adoption

Modernization Roadmap

Recommended next steps

Modernization Roadmap
Strategic recommendations for your Fabric modernization journey

Phase 1: Direct Lake Migration
Migrate suitable datasets to Direct Lake mode for better performance
HIGH PRIORITY • 2-4 weeks • High Impact

Phase 2: Lakehouse Implementation
Implement Lakehouse architecture for new data projects
MEDIUM PRIORITY • 4-6 weeks • Medium Impact

Phase 3: AI/ML Exploration
Explore AI/ML capabilities for advanced analytics
MEDIUM PRIORITY • 6-8 weeks • Medium Impact

Phase 4: Real-time Analytics
Implement Eventhouses for real-time data processing
LOW PRIORITY • 8-12 weeks • Medium Impact

[Start Modernization](#) [Export Roadmap](#)



Explorer Tab

Microsoft Fabric Intelligence

Enterprise-grade analytics and governance for your Fabric environment



datasets Data

Datasets

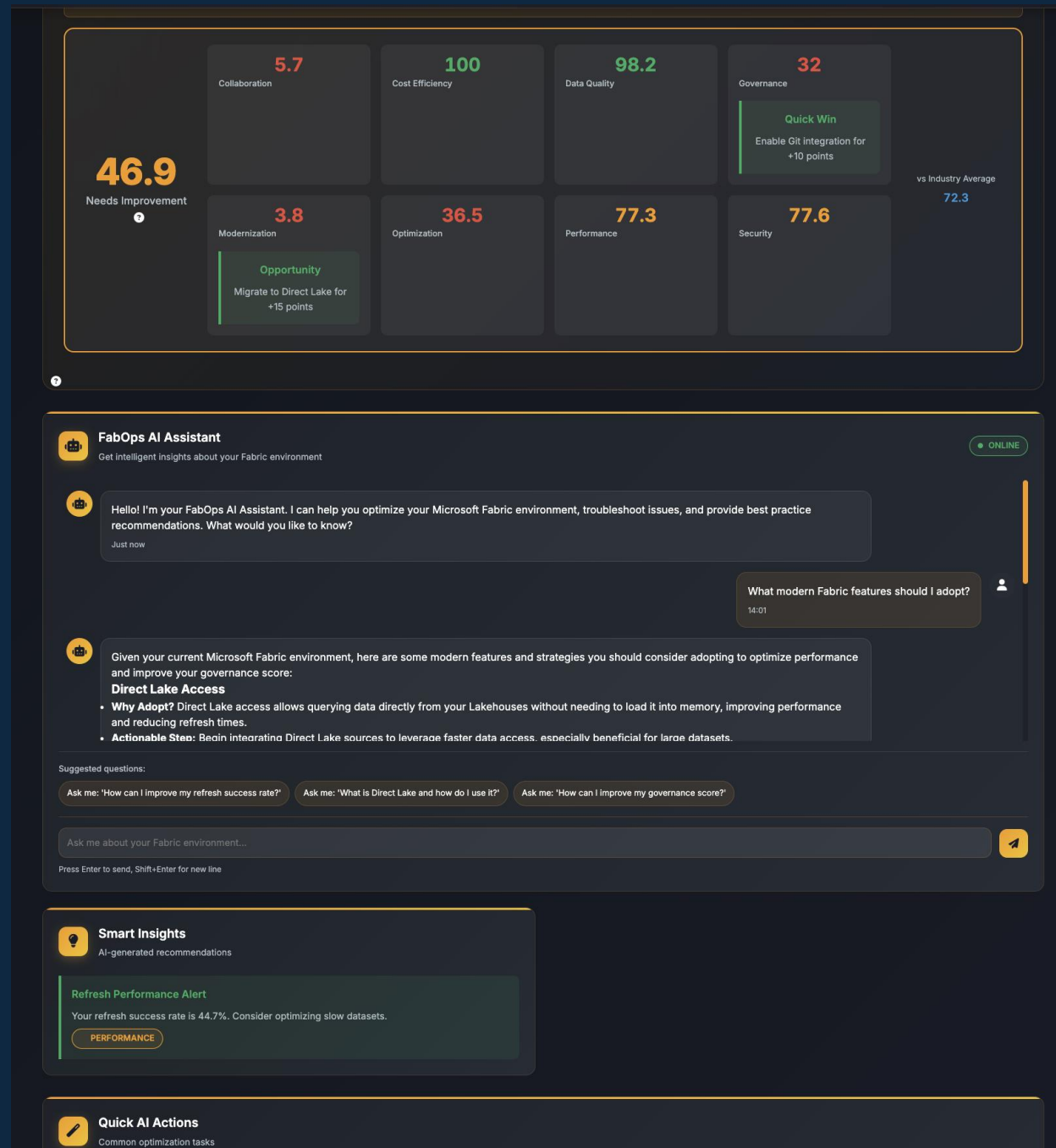
Search data...

50 per page

Add Rows Api Enabl...	Auto Sync Read Onl...	Batch Id	Collection Date	Collection Timestam...	Collection Version	Configured By	Content Provider
NO	YES	eb7eb487-630d-462...	2025-06-14	2025-06-14T09:34:4...	3.0	Riddhi.Anjarlekar@o...	PbixinImportMod
NO	YES	eb7eb487-630d-462...	2025-06-14	2025-06-14T09:34:4...	3.0	Abdulrafiu.Izuafa@o...	InImportMode
NO	YES	eb7eb487-630d-462...	2025-06-14	2025-06-14T09:34:4...	3.0	Abdulrafiu.Izuafa@o...	InImportMode
NO	YES	eb7eb487-630d-462...	2025-06-14	2025-06-14T09:34:4...	3.0	Abdulrafiu.Izuafa@o...	InImportMode
NO	YES	eb7eb487-630d-462...	2025-06-14	2025-06-14T09:34:4...	3.0	leon@onyxdata.co.uk	InImportMode
NO	YES	eb7eb487-630d-462...	2025-06-14	2025-06-14T09:34:4...	3.0	Abdulrafiu.Izuafa@o...	InImportMode
NO	YES	eb7eb487-630d-462...	2025-06-14	2025-06-14T09:34:4...	3.0	Abdulrafiu.Izuafa@o...	PbixinCompositel
NO	YES	eb7eb487-630d-462...	2025-06-14	2025-06-14T09:34:4...	3.0	Abdulrafiu.Izuafa@o...	InImportMode
NO	YES	eb7eb487-630d-462...	2025-06-14	2025-06-14T09:34:4...	3.0	Abdulrafiu.Izuafa@o...	InImportMode
NO	YES	eb7eb487-630d-462...	2025-06-14	2025-06-14T09:34:4...	3.0	leon@onyxdata.co.uk	Unknown
NO	YES	eb7eb487-630d-462...	2025-06-14	2025-06-14T09:34:4...	3.0	makrin.romero@onyx...	PbixinImportMod
NO	YES	eb7eb487-630d-462...	2025-06-14	2025-06-14T09:34:4...	3.0	Abdulrafiu.Izuafa@o...	InImportMode
NO	YES	eb7eb487-630d-462...	2025-06-14	2025-06-14T09:34:4...	3.0	folorunso.ajala@ony...	InCompositeMod
NO	YES	eb7eb487-630d-462...	2025-06-14	2025-06-14T09:34:4...	3.0	abayomi.abiodun@o...	InImportMode



AI Chat Tab





Thank You