



YoDA
(Your Data Analyzed)

Reporting & Business Intelligence Roadmap & POC Session

Move your business **forward.**

Objectives & Goals

Introduction and immersion session on Power BI

- Introductions and training on the Power BI platform to enhance enterprise reporting & business intelligence
- Leverage any existing investments in reporting platform technologies
- Create a proof-of-concept using existing data sources and the Power BI platform
 - Provision the aggregation of data from multiple data sources in the enterprise
- Explore the business benefits of deeper analytics capabilities
- Support the attendees with one-on-one interactions on the reporting platform

- Power BI Training
- Proof-of-Concept Development
- Strategy Discussions



Session Schedule

Phased approach with interim checkpoints for this POC

Day 1 - Dashboard in a Day using Power BI

1. *Classroom style session for **20 participants** to familiarize them with Power BI Desktop, Modeling, Visualization, Reports, Row Level Security, Power BI Services , Dashboard, Automated Data refresh, Collaboration. Client will be responsible to sign up for Power BI License*

Day 2 – Design the reporting platform for your enterprise

2. *Assess and connect your data sources to a central data repository on SQL 2016, create reporting data models, Wire Frame reports and dashboards. – 4 Participants from Client, Azure , Power BI license will be provided by client*

Day 3 – Develop and deploy the relevant visualizations on Power BI reporting platforms

Power BI platform is setup using your data, apply Row Level Security, Create Dashboard, Data Refresh

Day 4 & 5 – Remote Support - 4 Hours

4. *4 hours of Remote support for 4 Participants to help in developing any additional reports, Dashboards with in the scope of POC. Demo Power BI to Users at the Client Organization*

Primary Solution Components

Enterprise BI Database / DataWarehouse

The “central data repository” that would contain data from the various enterprise data sources and would be used for all the analysis and reporting purposes. Complex business logic can be implemented

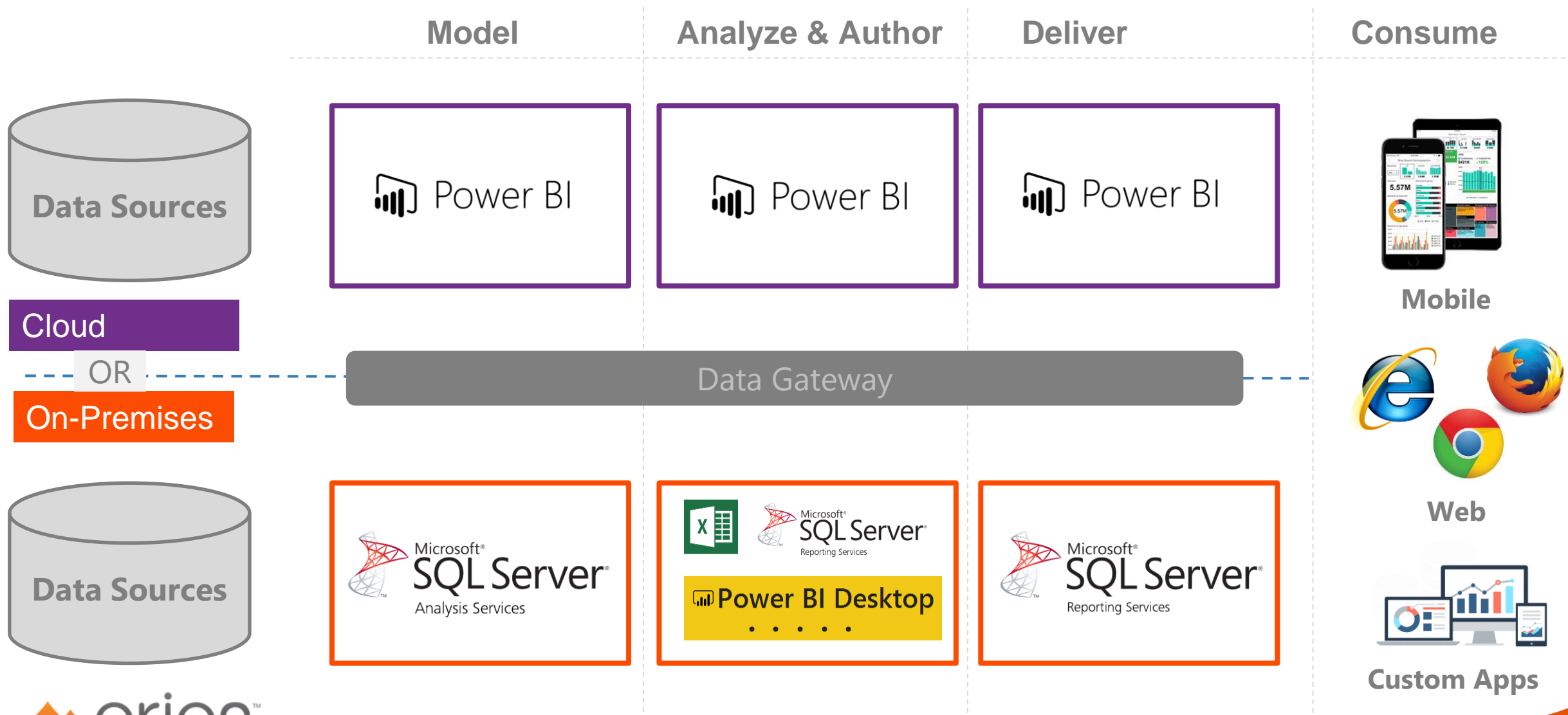
Integration (ETL) Services

Facilitate the smooth transfer of data across the various enterprise systems with the new central data repository. With a structured ETL platform, data can be collated from multiple sources into one single repository and then consumed for reporting or additional analytics.

Business Intelligence & Reporting

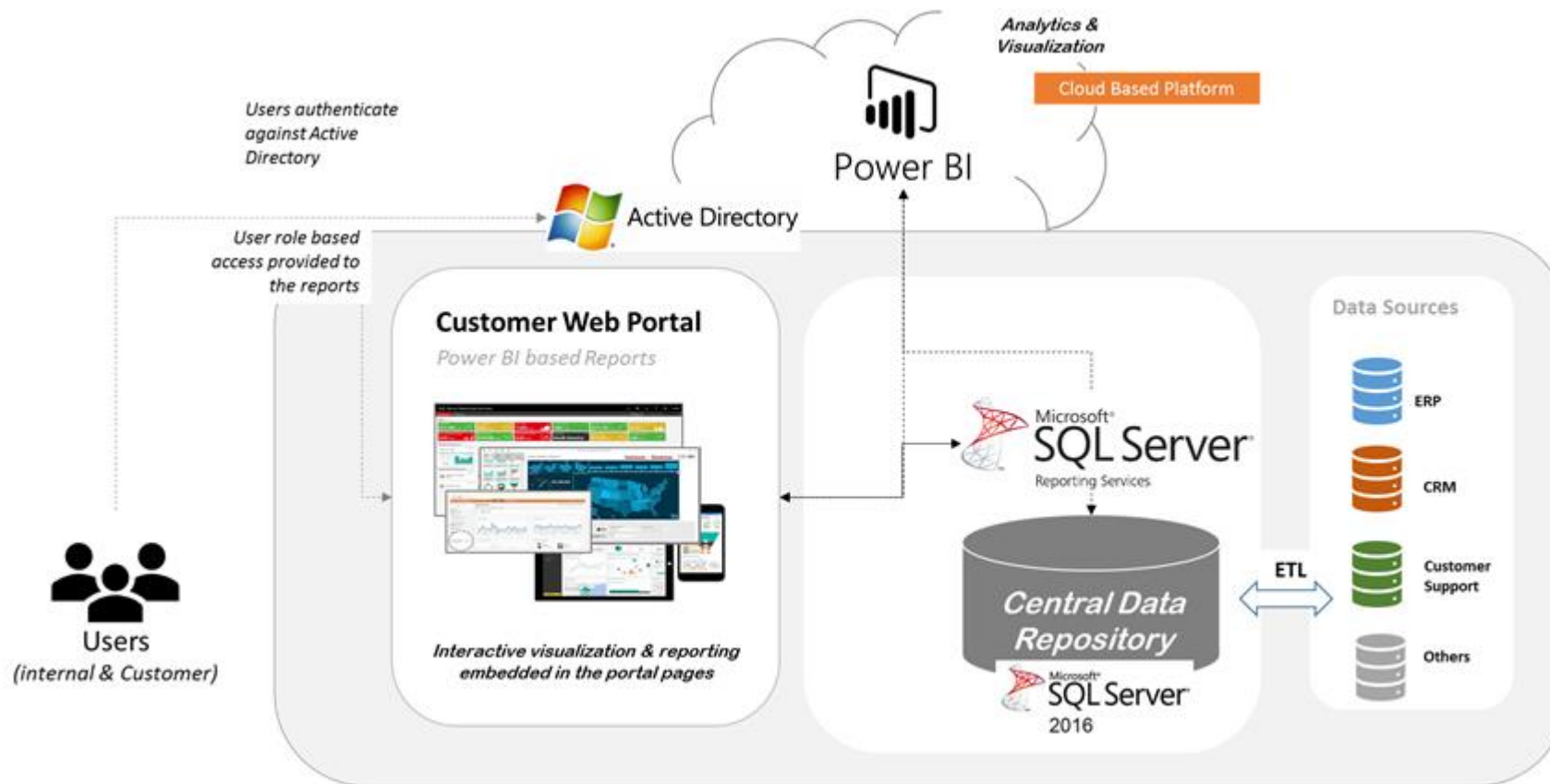
Enhance visibility into organization performance as well as provide self-service BI for all users using the Power BI platform and associated components

Microsoft's Business Intelligence Platforms



POC Architecture

Design and provision a composite business intelligence platform to foster data-driven business decisions



Conceptual & high level architecture

- Design and develop an "information access" platform that helps improve access to information across all dimensions of operations
- Facilitate business users to view data "their way" to extract operational insights for better performance

Session Terms & Conditions

- This session has been designed to support upto 20 participants
- All sessions will be conducted at Customer's location
- POC will include the design and development of upto 3 Report pages and 2 dashboards in Power BI
- Leverage existing customer investments for all product licenses including Power BI, Azure (if used), SQL
 - If Power BI licenses are not available, a 60 day trial account can be provisioned for upto 25 users



Current Situation &
Approach Recommendation



Platform
Comparison



Orion Corporate
Introduction



Past
Experience

Introducing Orion



23+
years of experience

End-to-End IT
Solutions Provider

400+
Customers

1800
associates
worldwide

1600+
Microsoft
Professionals
(90% of our associates)

Successfully
delivered
2000+
Enterprise solutions

Global Teams
for 24/7
Delivery
cycles & SLAs

Cloud &
On-Premise
Solutions

CMMI
Level 3
Certified Delivery
Center(s)



Solution Areas

Redefining IT-as-a-Service (ITaaS) – *Comprehensive services & solutions across the IT spectrum*

Presentation (UI/UX)



Business Intelligence
Visualization & Reporting

Web Technologies & Mobility

Business Process Automation

Business Process Automation, Integration & Workflows

Sales Automation

Resource Planning (ERP)

Content & Collaboration

E-Commerce

Governance & Risk

EDI

Infrastructure & Managed Services

Cloud & On-Premise

Help Desk & Application Support



expertise & relevant experience across the length-and-breadth of the MS Technology platforms for enterprises ...



Highlighted Engagements

- Drives academic testing results & tabulations for over **2,000 schools and 100,000+ students**
- Effected substantial reduction in infrastructure costs for over **50+ companies** by **moving to the Microsoft cloud**
- Enables a **Public Water Utility company** to intuitively **visualize operational issues** and plan ahead
- Helped a **local government** create **an effective collaborative platform** for the mayoral council and other departments
- Runs the Audit & Advisory processes for over **80,000 auditors** globally
- Enables **80+ manufacturing** companies (**approx. 200+ brands**) to efficiently and effectively manage their manufacturing operations
- Allows 500+ **sales personnel** to effectively collaborate and enhance their business productivity among **2000+** more

Marquee Clients



- Solutions provided for **multiple industry verticals** & functional domains
- Experience with **SMB to large enterprises**
- Effective **cross-pollination of knowledge and experiences** for maximum results



Business Consulting

Vantage Consulting Group, Abel HR (PEO), ADP (PEO)



Government & Public Sector

US Air Force, DC Water, Borough of Atlantic Highlands



Consumer & Retail

Johnson & Johnson, Dell, Coca Cola



Healthcare & Pharma

Medventus, Amicus Therapeutics, SpectraMedix



Education

CISCE (India), DUOCC (Chile), Atlanta Public Schools



Manufacturing

PNY, John Boone, Intimo, Mad Engine



Financial & Prof.Serv

Top 4 Audit Firm, Top Advisory Firm, GE, JPMC, TitleMax, FiServ



Telecom & Media

AT&T, ThomasNet, Intermark Media



Current Situation &
Approach Recommendation



Platform
Comparison



Orion Corporate
Introduction



Past
Experience

Platform Experience

Advanced analytics driven automation for enhanced business productivity

Small Enterprises	Mid-Market Enterprises	Large Enterprises	Education
Process Automation	Salesforce Automation	Technology Modernization	Assessments Digitization
Intranets	EDI	Audit Automation	ERP
Workflows	E-Commerce	Tax & Regulatory	Mobile Apps
Data Integration	Process Automation	Compliance & Risk	



Enterprise Functions

Collaboration

Communications & Enterprise Social

Business Intelligence

Business Process Automation

Core Services

Solution Consulting

Solution Architecture

ERP/CRM

QA & Testing

Enterprise Integration

Product Engineering



Sales process transformation - Solution Spotlight

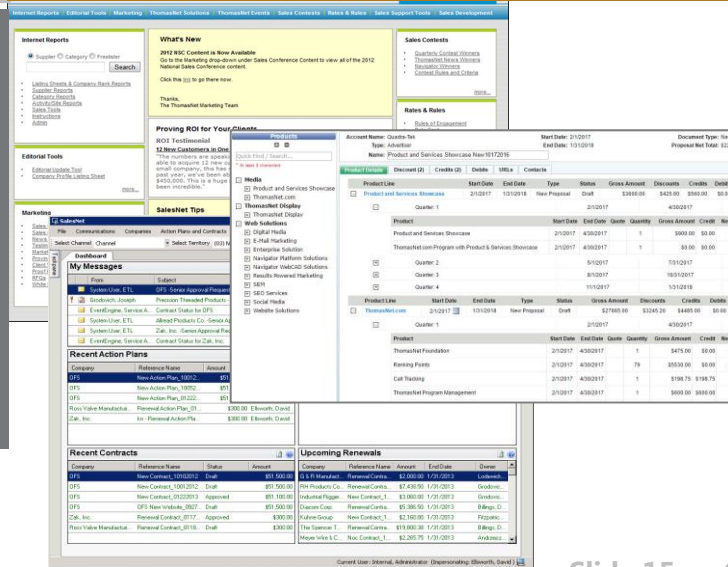
Going beyond CRM - Cognitive engagement of sales teams

120+ year old **B2B marketplace leader** with a large portfolio of products and services for suppliers and buyers

Integrated platform that "corrals" multiple cross functional groups into one single ecosystem to manage the products portfolio; market it internally/externally; prospect & sell to customers; and ensure it was delivered ...

- Reduced lead time for new or updated offerings
- Easier accessibility to content
- Enhanced Collaboration
- Better governance
- **Effective cross-functional engagement**

Geographically distributed sales teams with no "anchor" to product portfolio content, process workflows OR SLAs



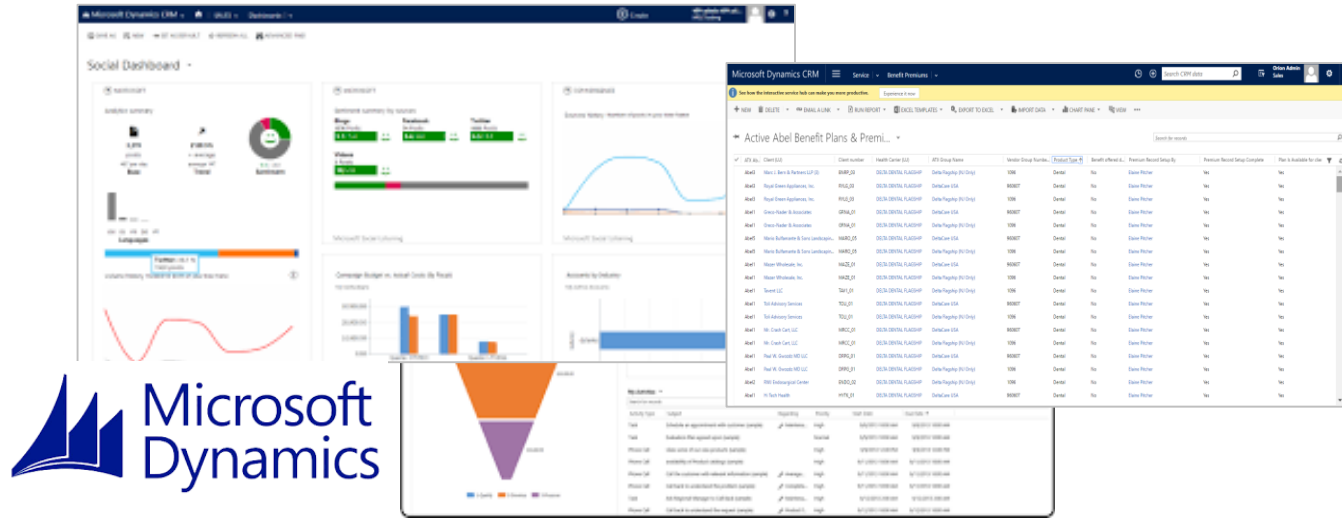
- Products Catalog mgmt.
- Sales & Mkt. Collaboration
- Order-to-Cash system
- Backend Integration
- Production Workflows



One window to enterprise data - Solution Spotlight

Process automation – employee engagement with data integration

Leading **payroll services outsourcing** organization managing over 10,000 employees across 400 clients



Extensive integration and customizations of the Microsoft CRM platform for business process workflows and data management capabilities, providing users with "one window" to enterprise data.

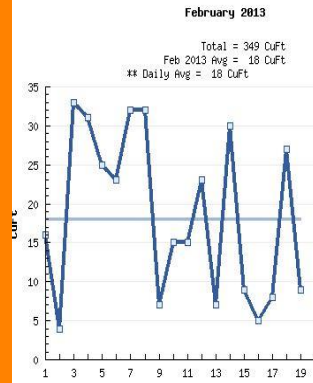
- Customers & Employee data mgmt.
- Benefits Processing
- Deductions & Billing
- Activities & Tasks
- Sales Automation
- Reporting & data visualization
- Automated workflows & processes
- Data Integration across all systems

Water Utility BI - Solution Spotlight



- Enterprise integration across multiple heterogeneous systems and technologies
- Composite view of asset performance and utilization
- Automated Meter Reading
- Automated workflows and business rules trigger alerts
- Business Intelligence dashboards and reports

- Automated Meter Reading
- Asset Management System (Maximo)
- Enterprise Customer Information System (eCIS)
- Mobile Work Order System (SOS)



** Average from February 1, 2012 to February 20, 2013

Download Meter Readings

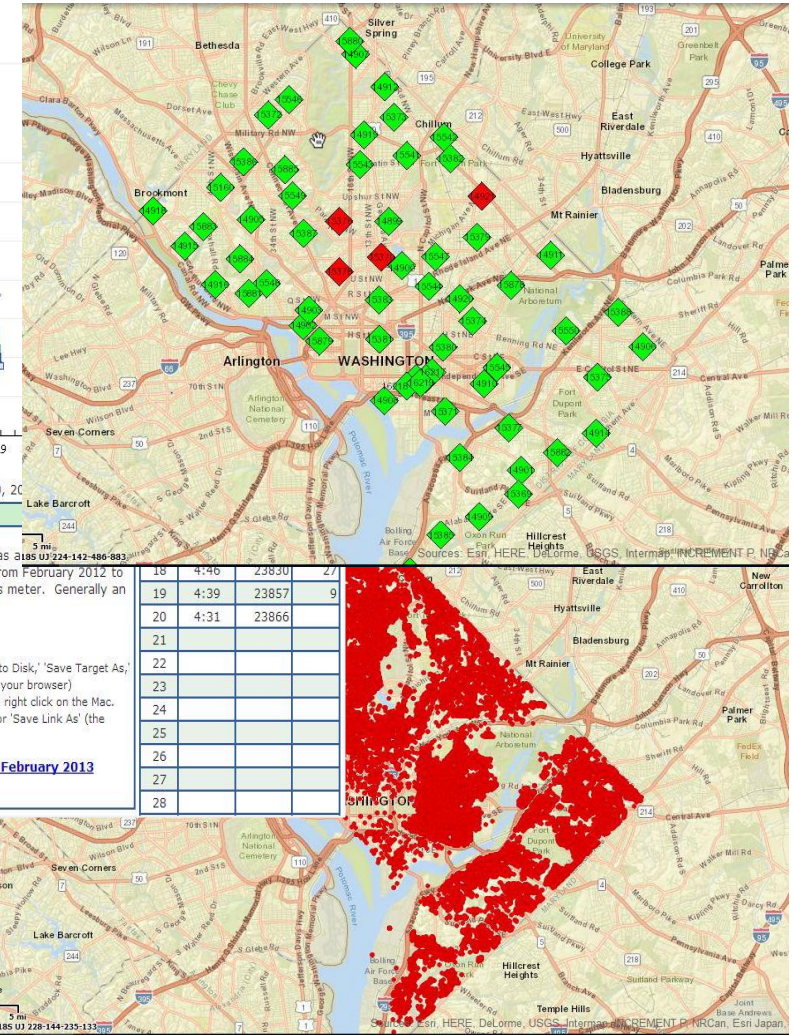
All Readings from this meter can be downloaded as a Comma Separated Values File (.csv). Readings from February 2012 to February 2013, are available for download for this meter. Generally an AMR meter transmits two readings per day.

Using the link below:

- **PC**—right-click the link and select 'Download Link to Disk,' 'Save Target As,' or 'Save Link As' (the menu selection depends on your browser)
- **Macintosh**—'Control-Click' as this will simulate a right click on the Mac. Select 'Download Link to Disk,' 'Save Target As,' or 'Save Link As' (the menu selection depends on your browser)

[Meter Readings from February 2012 to February 2013](#)

18	4:46	23830	27
19	4:39	23857	9
20	4:31	23866	
21			
22			
23			
24			
25			
26			
27			
28			



Solving Complex Business Issues - Solution Spotlight

From Digitization to Artificial Intelligence – our success with one of the Top 4 Auditing Firms

One of the **Top 4 Auditing** firms faced severe issues with process efficiencies especially with increased data loads

Client teams were primarily on paper-based, diverse manual processes with heterogeneous and disconnected software tools



Standardized the technology platform and workflow processes across **165 countries** using Orion's very own custom framework of "building blocks".

Automated the business processes with advanced analytics (**predictive & cognitive**) to increase data accuracy & efficiency for **80,000+ users**.

Extensive play of **Microsoft Technology Platforms** in concert.

Assured
100%
Regulatory Compliance

Over
57%
Savings in Audit Hours

Over
60%
Cost savings in Planning & Risk Assessment

20%
savings
in Operational Costs



Why us ?



We go beyond “technology platforms” to create “technology ecosystems”; where data flows seamlessly through “intelligent” business processes; spurred-on by empirical data driven analytics

- **End-to-end capabilities** on the Microsoft technologies stack
- Strong **industry focus** and functional domain expertise
- **Experienced & reliable partner** for the mid-market on Azure
- **Solution accelerators** that facilitate speedy implementations and time-to-market
- **Global operations** for 24/7 delivery cycles

Thank You.

For more Information, please visit: <http://www.orioninc.com>

Disclaimer: This document is for informational purposes only and is subject to change without notice. This document and its content herein are believed to be accurate as of its date of publication. However, Orion Systems Integrators, LLC (herein referred as Orion) makes no guarantee, representations or warranties with regard to the enclosed information and specifically disclaims the implied warranties of fitness for a particular purpose and merchantability. As each user of Orion services is likely to be unique in their requirements in the use of such software solutions and their business processes, users of this document are always advised to discuss the content of this document with their Orion Representatives.

All other trademarks acknowledged. Copyright @ 2017 Orion Systems Integrators, LLC.

