

BLUVAULT for Exchange Online

PARABLUBACKUP FOR MICROSOFT EXCHANGEONLINE

**Complete Exchange Online
Data Protection**

DATASHEET

Office 365 Exchange Online backup with 100% security

You've moved your data to Office 365 and enabled greater collaboration for your distributed teams and achieved seamless accessibility. That's great, but have you thought about the safety of your Exchange data? BluVault helps you backup your Microsoft Exchange data effortlessly to an alternate cloud target with total security and privacy.

SaaS data backups are an indispensable asset in any IT Administrator's toolkit. Whether it is to achieve regulatory compliance, protect against ransomware, defend against insider threats or just plain data recovery – an Exchange backup is an absolute necessity.

And that's where BluVault for Exchange Online comes in.

Automated Exchange Backup

BluVault enables automatically scheduled backups that ensure that all Exchange data is safely stored and easily recoverable. Granular restores enable you to get back even a single email and the complete mail exchange.

Shared Responsibility Model

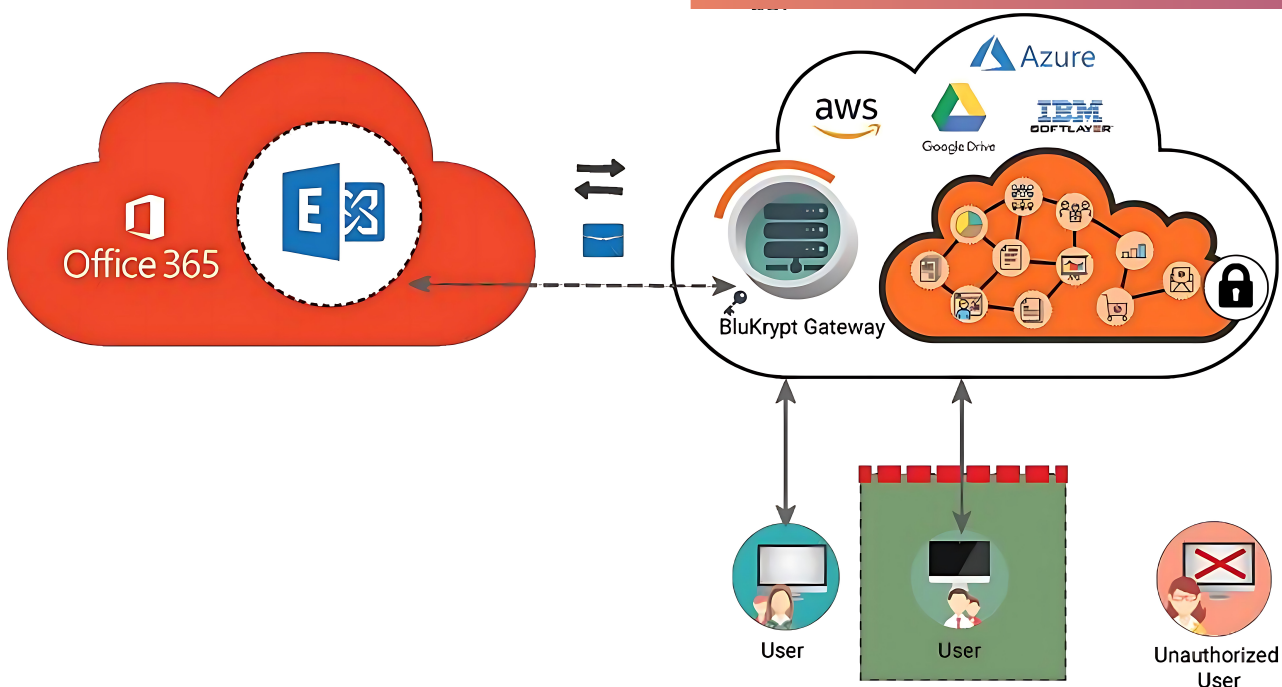
This is a fairly standard industry practice that is important to understand. Having your data in the cloud, doesn't necessarily mean you're automatically getting data protection. SaaS vendors draw a clear line where their responsibilities stop and the customers' begin. Generally SaaS/Cloud vendors take responsibility for certain things like uptime, infrastructure, and network availability – but customers remain responsible for the data that they store in the cloud and its security.

Security, Privacy, and Confidentiality

BluVault combined with BluKrypt, Parablu's Privacy Gateway, not only enables powerful encryption but also enforces a strict separation of duties. It also obfuscates file and folder names completely as well as perform file shredding, before writing backup data to cloud storage targets. With BluVault, you know your enterprise data is safe.

Zero Knowledge Privacy

Zero Knowledge Privacy is a tenet that all Parablu products are built on. This ensures that your data can be accessed only by you and nobody else – not the cloud vendor, not even us.



Zero Trust Security

At Parablu, we take security very seriously. BluVault is built on the tenet of Zero Trust. Centralized Identity Management, Secure Single Sign-On (SSO), Multi-Factor Authentication, and Principle of Least Privilege are all designed into the solution.

Industrial-strength Data Encryption

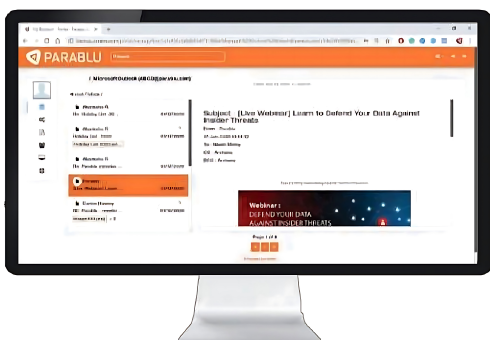
BluVault ensures critical data is encrypted- both at rest as well as during transit. All data at rest is encrypted using industrial-strength AES-256 encryption while data in flight is always transmitted using at least TLS 1.2 with strong ciphers. Also, by combining strong encryption with a strict enforcement of segregation of duties, you can ensure that your data is accessible ONLY to your organization. Not to the cloud vendor, or even Parablu!

Policy-based Management

Parablu's BluVault provides policy-based management that allows an administrator to easily control all elements of backup behavior- backup schedules, folders to include/exclude, file types to include/exclude, number of versions to retain, file size limits, user quota limits etc. Once these parameters are set, all Exchange accounts pointed to the policy read these parameters and change their backup behavior in a matter of a couple of hours.

Don't be Limited by Mailbox Quotas

Don't let limitations imposed by your SaaS license affect the amount of data you retain. With BluVault you can rest free knowing that a copy of your data is always accessible, irrespective of mailbox size limits imposed by your SaaS license.



With many Office 365 licenses, mailbox sizes are limited to 50GB. With BluVault for Exchange, you can effectively expand your mailbox size by deleting older email out of your mailbox- secure in the knowledge that you have a fully searchable archive of all your old email.

Regulatory Compliance & Governance

BluVault helps organizations achieve regulatory compliance. Regulations like SOX, HIPAA, GDPR and others have requirements around data protection and retention which BluVault can help meet. BluVault's reports and audit trail help to keep organizations on a defensible platform when it comes to regulatory compliance.

Auditing and Reporting

BluVault automatically audit logs all touch points in the system, and provides several reports which can be scheduled to run automatically or generated automatically. The enterprise class rigor, combined with granular insights makes backup management a cinch, while helping you stay compliant.

Incremental Backups Forever

After an initial full backup of enterprise Microsoft 365 data, BluVault subsequently copies only changed data, making for highly optimized storage and network usage.

Advanced Archiving Features

Capture a true archive of emails even if they are deleted by users and removed from "Deleted Items" and "Recoverable Items". Smart filters can be configured with patterns to filter out emails you don't need to archive. Use the built-in capacity management feature to free up space in the user mailbox by archiving attachments and replacing them with Cloud Files. BluVault's capacity management capabilities for Exchange and OneDrive let you get more out of your existing M365 subscription.

De-duplication & Compression

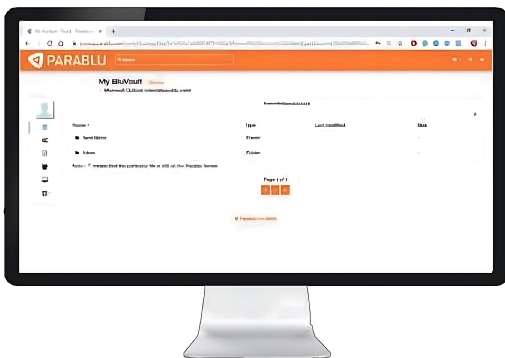
Smart sub-file level de-duplication combined with data compression saves network bandwidth and valuable storage space.

Protection From Ransomware

With BluVault, you can eliminate the need to negotiate with ransomware attackers. With a secure copy of your data and the knowledge that you can recover your data from any previous point-in-time, you can control your own destiny and not be held hostage. BluVault boasts an array of features designed to defend businesses from ransomware – ranging from Unusual Activity Detection, curated point-in-time restores, cloud-to-cloud restores, as well as device and file quarantining features. In summary, BluVault is designed to ensure that a redundant data copy is available, uncompromised, and ready for quick recovery.

Self-service Interface

BluVault offers the flexibility to allow users to choose what to backup, discover how protected their emails are and do their own restores. BluVault's easy-to-use interface means that users can initiate their own restores without requiring an administrator to get involved. The self-service nature is fully controllable by the administrator though, and can be turned up and down based on the organization's appetite for selfservice. Certain user groups can also be given privileges than another.



About Us

Parablu is a leading provider of data security and resiliency solutions for the digital enterprise. These solutions protect enterprise data completely and provide total visibility into all data movement through centrally managed intuitive dashboards. Parablu's products include BluVault– a suite of powerful and secure data backup solutions designed for the cloud and BluSync™– a suite of solutions designed for secure managed file transfer, secure collaboration, and file services. Both the solutions holistically address enterprise data protection needs and can be easily bridged with existing infrastructure– offering cost effective data protection overall.

[GET A DEMO](#)

Delegated Administration Capability

Administrative roles with limited permission can be assigned to selected users to allow them to perform specific administrative operations.

Administrator Approved Deletion

Allows an Administrator to delete specific user files and folders from backup storage. Critical for GDPR compliance and to satisfy users' "right to be forgotten". Actions are audit-logged for compliance reasons.

AD & Azure AD Support

Integrate easily with enterprise namespaces, such as Active Directory and Azure Active Directory. AD and AAD can be used not just for authentication but also to provision and deprovision users on an on going basis.

Vendor Agnostic

BluVault's vendor agnostic service ensures you can backup your Exchange Online data to whatever cloud destination you choose. In variable of your cloud destination, BluVault can work towards safely backing up your data.

No Infrastructure Headaches

BluVault for Exchange is a cloud-to-cloud offering which means no on-premise infrastructure and no impact on your company network bandwidth for daily backups. Just schedule it, and forget it. You have other things to worry about!

Litigation Hold

Allows administrators to assign special policies to identified users which align to Legal Hold requirements.