

PAXAFE

Logistics Orchestration & Decision Intelligence Platform

Target Industries

Life Sciences, Produce, LSP / 3PL, Sensor, Retail (F&B)

Customer Pain Point

Managing transportation & logistics for temperature-sensitive products is hard and expensive. Each year, \$800+ billion worth of perishable food, medicines, and consumer goods are wasted due to temperature management failures in transit & storage. Enterprises invest hundreds of billions annually in 3PL services, consulting, packaging, sensors and temperature control solutions aiming to reduce losses through improved visibility. Despite these growing investments into data loggers, TMS / visibility aggregators & IoT sensors, product loss ratios continue to rise while enterprises remain underwhelmed with a lack of actionable data.

Solution

[PAXAFE](#) is a logistics orchestration & decision intelligence platform that helps cold chain manufacturers and Logistics Service Providers (LSP) reduce monitoring & intervention costs [for IoT-enabled visibility], digitize & automate Lane Validation and Lane Risk Assessments (LRA), and incorporate prescriptive recommendation into the real-time visibility network.

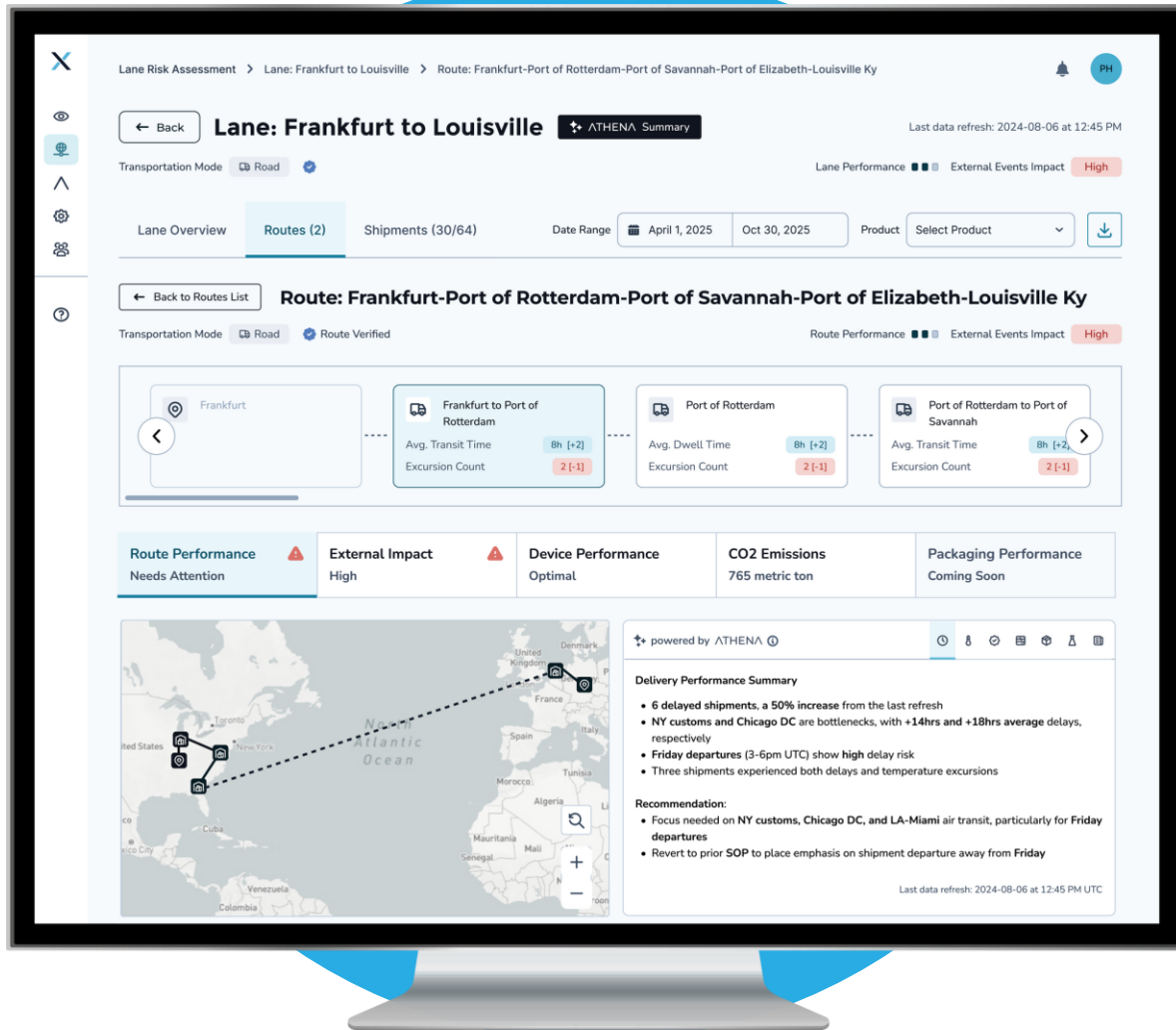
Customer Benefit

Acting as the trust layer for temperature-controlled logistics networks whose mission is to drive towards zero waste in cold chain transportation, PAXAFE accelerates and improves logistics planning decisions (SOP, routing, packaging, carrier, mode of transport, IoT) while automating tactical monitoring of critical day to day shipments.

PAXAFE customers benefit from putting their cold chain operations on auto-pilot – accelerated and optimized decision-making & instant tradeoff analysis – powered by gen-AI -- without the costly dashboards, consultants and analysis paralysis

Leadership

Ilya Preston CEO, Ashok Seetharam CTO, Brian Shultz CRO





Search Shipments

SEARCH

Good evening, PAXAFE

40 active shipments today

[VIEW ALL](#)

● NEW

0

[VIEW](#)

● IN-TRANSIT

40

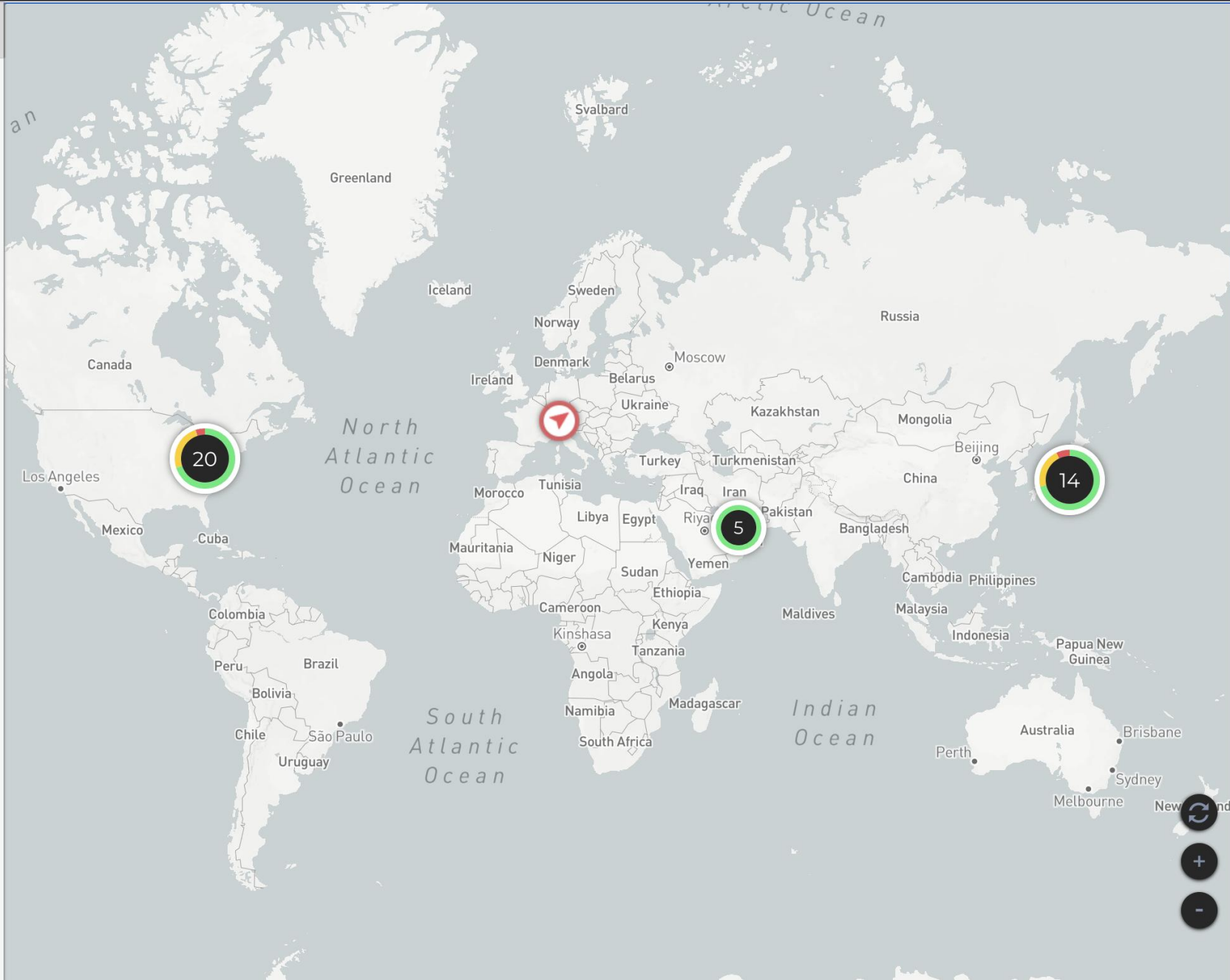
[VIEW](#)

● DESTINATION

0

[VIEW](#)

CONFIGURE THIS PAGE





Search Shipments

SEARCH

Good evening, PAXAFE

40 active shipments today

[VIEW ALL](#)

NEW

0

[VIEW](#)

IN-TRANSIT

40

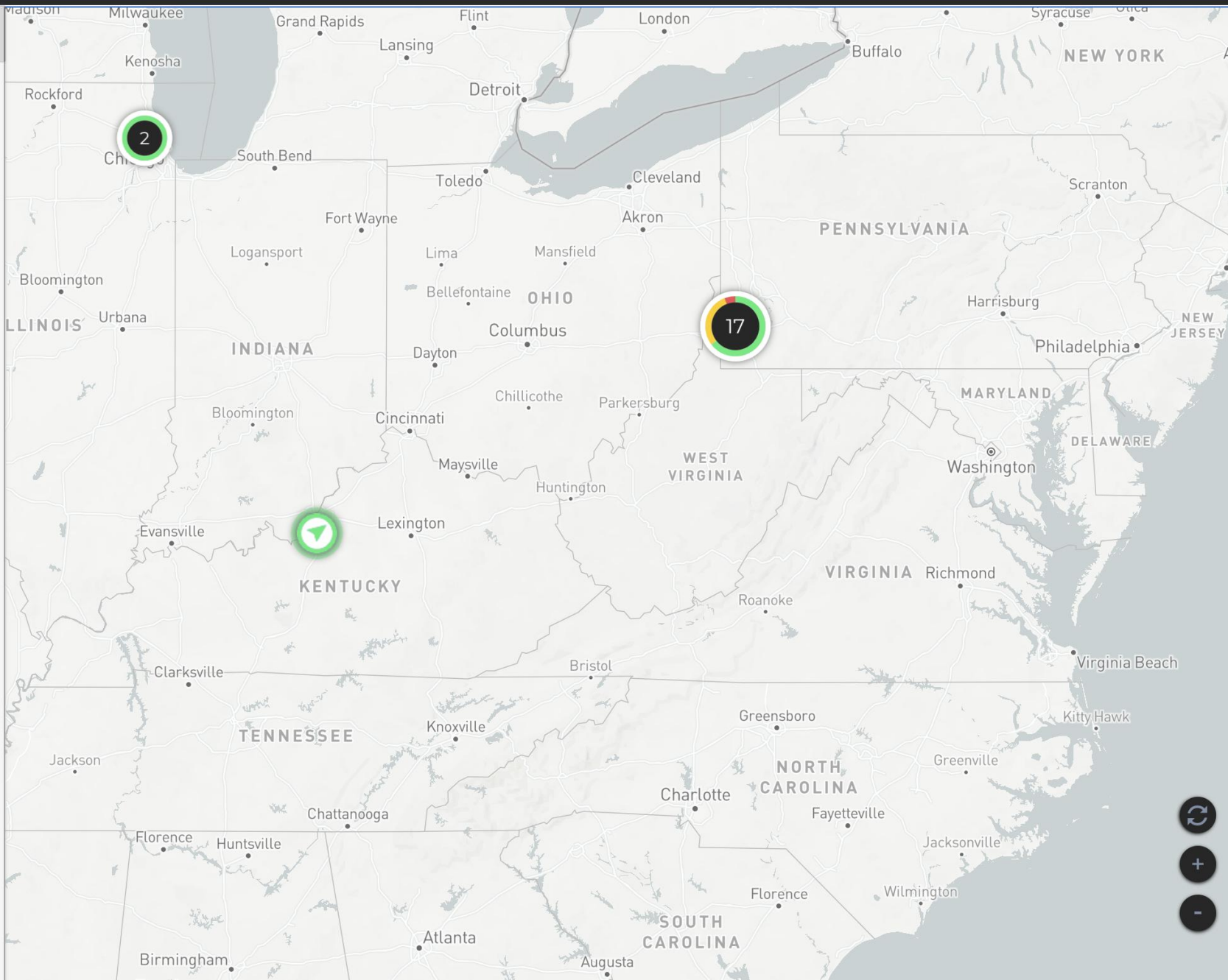
[VIEW](#)

DESTINATION

0

[VIEW](#)

CONFIGURE THIS PAGE





Search Shipments

SEARCH

51 All Shipments

FILTERS

Sort by Latest Created

51 173 All

PX116423 | 1062097791

In-Transit

Belgium - Japan (BRU-NRT) -20°C Palletized Drug Product

Kuehne+Nagel 1A1 1A2, Rue d... Japan, 〒140-0003 Tokyo, Shi... 09/23/2024 at 19:18

PX114995 | 1061970007

Completed

Belgium - Japan (BRU-DXB-NRT) -20°C Palletized Drug Product

Kuehne+Nagel 1A1 1A2, Rue d... Japan, 〒140-0003 Tokyo, Shi... 09/19/2024 at 08:31 09/25/2024 at 22:23

PX116121 | 1061917118

Completed

Belgium - Taiwan (BRU-AMS) -20°C Palletized Drug Product

Kuehne+Nagel 1A1 1A2, Rue d... Taiwan Taoyuan Internationa... 09/16/2024 at 10:29 09/19/2024 at 03:25

PX116144 | 1061916418

Completed

Belgium - Taiwan (BRU-AMS) -20°C Palletized Drug Product

Kuehne+Nagel 1A1 1A2, Rue d... Taiwan Taoyuan Internationa... 09/16/2024 at 06:46 09/19/2024 at 04:36

SHIPMENT NUMBER PX114995

TRACKER ID 66218

SHIPMENT DESCRIPTION

Moderna Belgium

Mitsubishi_Logistics_Corporation...

4-chōme-1-21 Tōkai, Ota City, Tokyo 143-0001, Japan

09/25/2024 at 23:23 CURRENT LOCATION

TIMELINE

DEVICE DETAILS



HEAT DEVIATION | UPPER-LIMIT-3

Type: Cumulative

Threshold: -1.9° | Duration: 15 mins

- 3-chōme-6-1 Kameido, Koto City, Tokyo 136-0071, J... 09/22/2024 at 22:51

25.6°C ^ 27.5°C



LEFT TOKYO AIRPORT (NRT) | stop

09/22/2024 at 22:51



3-chōme-6-1 Kameido, Koto City, Tokyo 136-0071, Japan



1 day and 18 hours



ARRIVED AT TOKYO AIRPORT (NRT) | stop

09/21/2024 at 05:05



Q9F9+JJ Narita, Chiba, Japan



LEFT DUBAI AIRPORT (DXB) | stop

09/20/2024 at 19:06



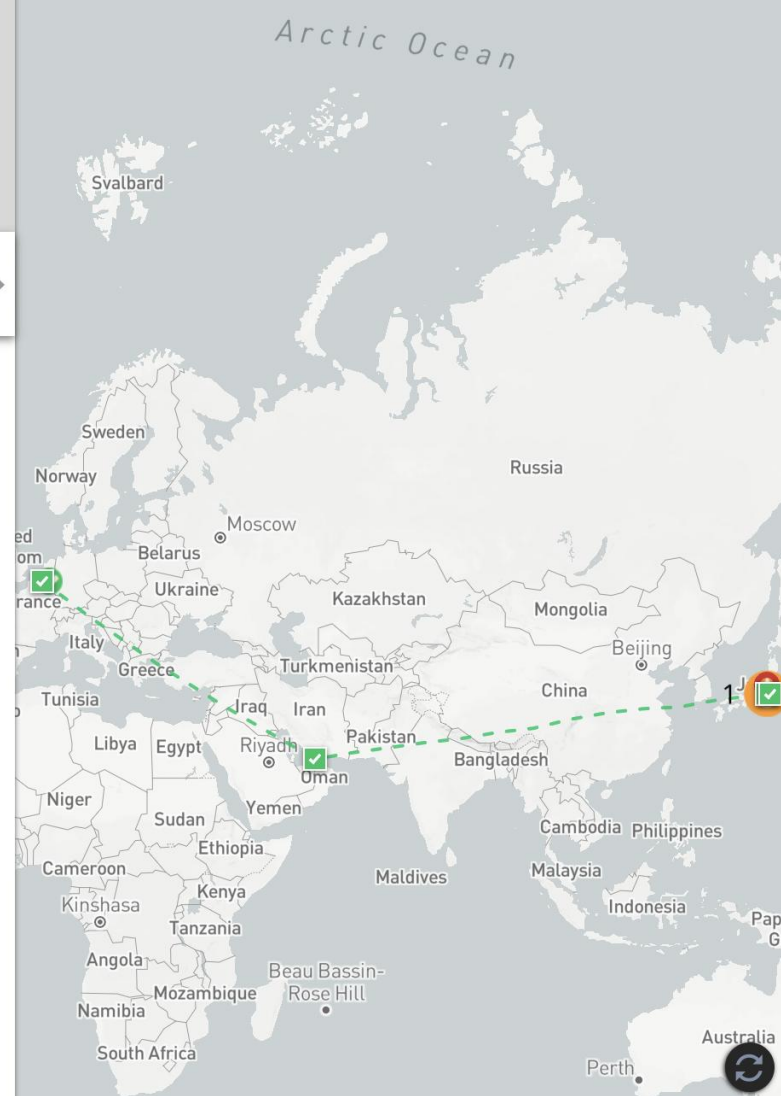
Nara, Sindh, Pakistan



3 hours



ARRIVED AT DUBAI AIRPORT (DXB) | stop



STREET SATELLITE





Search Shipments

SEARCH

51 All Shipments

FILTERS

Sort by Latest Created

51 173 All

PX116423 | 1062097791

In-Transit

Belgium - Japan (BRU-NRT) -20°C Palletized Drug Product

Kuehne+Nagel 1A1 1A2, Rue d... Japan, 〒140-0003 Tokyo, Shi... 09/23/2024 at 19:18

PX114995 | 1061970007

Completed

Belgium - Japan (BRU-DXB-NRT) -20°C Palletized Drug Product

Kuehne+Nagel 1A1 1A2, Rue d... Japan, 〒140-0003 Tokyo, Shi... 09/19/2024 at 08:31 09/25/2024 at 22:23

PX116121 | 1061917118

Completed

Belgium - Taiwan (BRU-AMS) -20°C Palletized Drug Product

Kuehne+Nagel 1A1 1A2, Rue d... Taiwan Taoyuan Internationa... 09/16/2024 at 10:29 09/19/2024 at 03:25

PX116144 | 1061916418

Completed

Belgium - Taiwan (BRU-AMS) -20°C Palletized Drug Product

Kuehne+Nagel 1A1 1A2, Rue d... Taiwan Taoyuan Internationa... 09/16/2024 at 06:46 09/19/2024 at 04:36

SHIPMENT NUMBER PX114995

TRACKER ID 66218

SHIPMENT DESCRIPTION

Moderna Belgium Mitsubishi_Logistics_Corporation... Kuehne+Nagel 1A1 1A2, Rue du Trilogiport... Japan, 〒140-0003 Tokyo, Shinagawa City,...

4-chōme-1-21 Tōkai, Ota City, Tokyo 143-0001, Japan 09/25/2024 at 23:23

CURRENT LOCATION

TIMELINE

DEVICE DETAILS



HEAT DEVIATION | UPPER-LIMIT-3

Type: Cumulative

Threshold: -1.9° | Duration: 15 mins

- 3-chōme-6-1 Kameido, Koto City, Tokyo 136-0071, J... 09/22/2024 at 22:51

25.6°C ^ 27.5°C



LEFT TOKYO AIRPORT (NRT) | stop

09/22/2024 at 22:51



3-chōme-6-1 Kameido, Koto City, Tokyo 136-0071, Japan



1 day and 18 hours



ARRIVED AT TOKYO AIRPORT (NRT) | stop

09/21/2024 at 05:05



Q9F9+JJ Narita, Chiba, Japan



LEFT DUBAI AIRPORT (DXB) | stop

09/20/2024 at 19:06



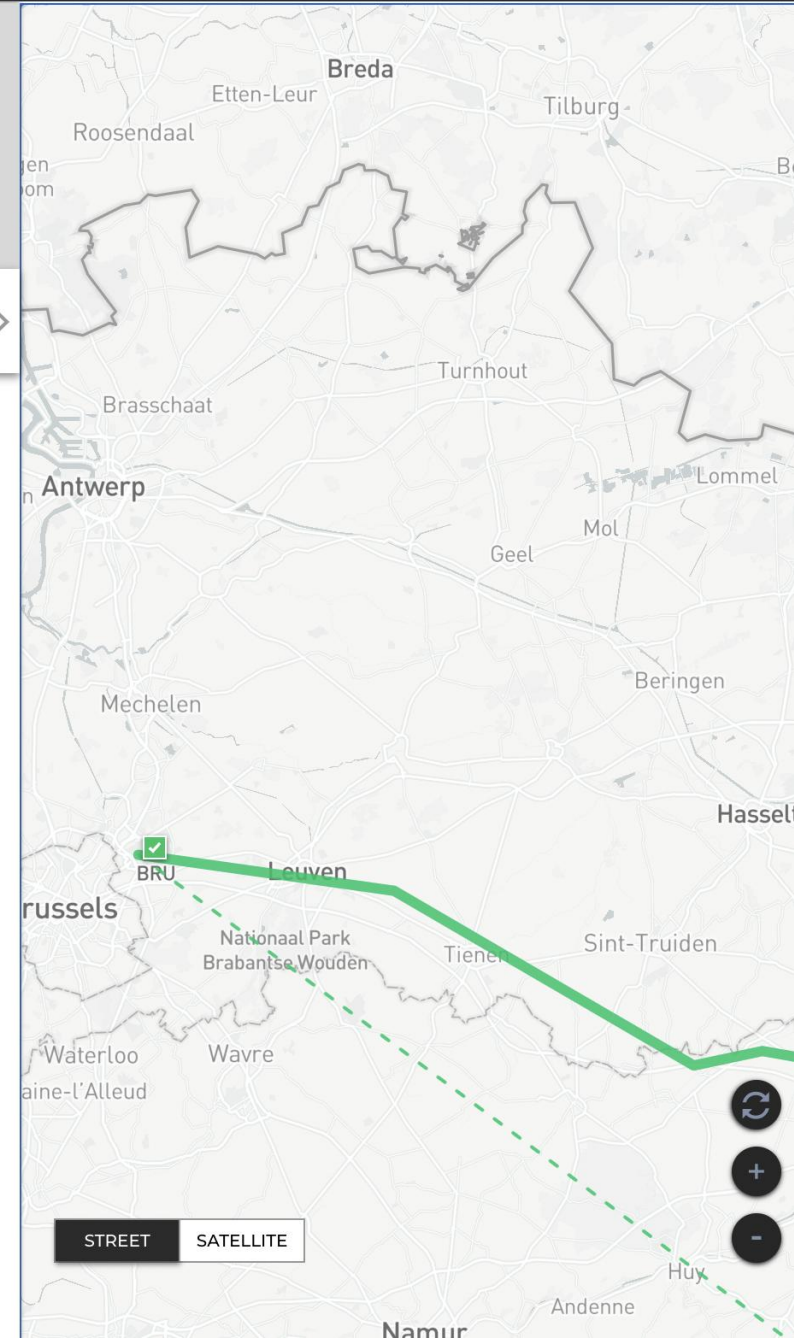
Nara, Sindh, Pakistan



3 hours



ARRIVED AT DUBAI AIRPORT (DXB) | stop



STREET SATELLITE





Search Shipments

SEARCH

51 All Shipments

FILTERS

Sort by Latest Created

51 173 All

Belgium - Taiwan (BRU-LUX) -20°C Palletized Drug Product

Kuehne+Nagel 1A1 1A2, Rue d... 09/24/2024 at 06:45

Taiwan Taoyuan Internationa... 10/01/2024 at 06:03

PX116285 | 1062084317

Completed

Belgium - Taiwan (BRU-LUX) -20°C Palletized Drug Product

Kuehne+Nagel 1A1 1A2, Rue d... 09/24/2024 at 06:26

Taiwan Taoyuan Internationa... 09/30/2024 at 23:12

PX116423 | 1062097791

In-Transit

Belgium - Japan (BRU-NRT) -20°C Palletized Drug Product

Kuehne+Nagel 1A1 1A2, Rue d... 09/23/2024 at 19:18

Japan, 〒140-0003 Tokyo, Shi...

PX114995 | 1061970007

Completed

Belgium - Japan (BRU-DXB-NRT) -20°C Palletized Drug Product

Kuehne+Nagel 1A1 1A2, Rue d... 09/19/2024 at 08:31

Japan, 〒140-0003 Tokyo, Shi... 09/25/2024 at 23:23

SHIPMENT NUMBER PX116423

TRACKER ID 69327

SHIPMENT DESCRIPTION

Moderna Belgium Mitsubishi_Logistics_Corporation...
Kuehne+Nagel 1A1 1A2, Rue du Trilogiport... Japan, 〒140-0003 Tokyo, Shinagawa City...

3-chôme-6-1 Kameido, Koto City, Tokyo 136-0071, Japan 09/27/2024 at 03:28
CURRENT LOCATION

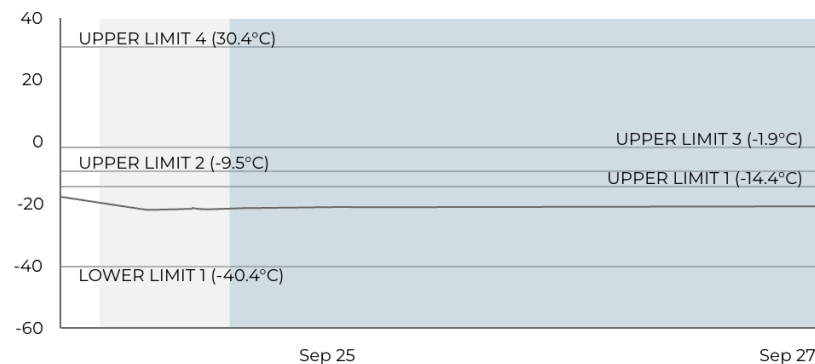
TIMELINE

DEVICE DETAILS

--- -20.5°C 24% RH Normal 13%

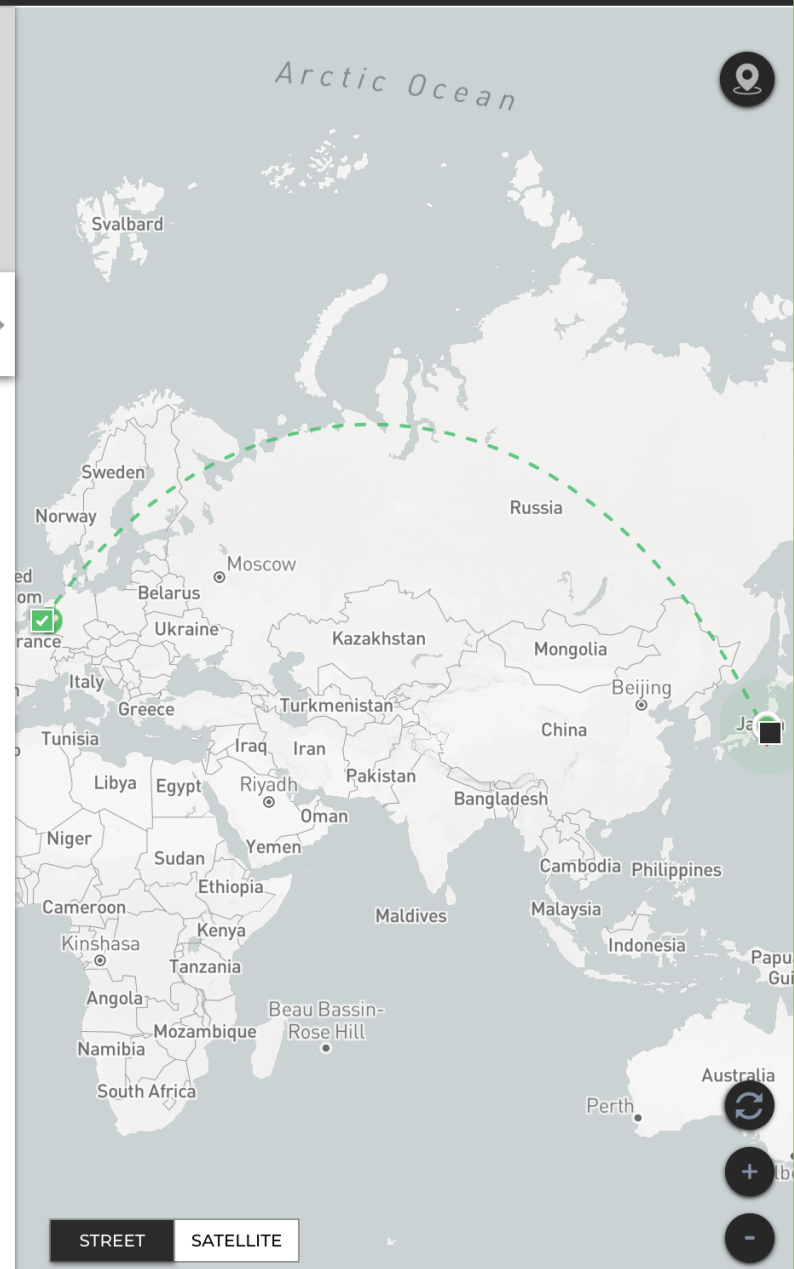
Lid Temperature Humidity Shock Battery

Temperature °C °F Temperature



MAX TEMPERATURE -17.5°C MIN TEMPERATURE -21.6°C AVERAGE TEMPERATURE -20.9°C

TIME ABOVE THRESHOLD | UPPER-LIMIT-1 0 mins TIME BELOW THRESHOLD | LOWER-LIMIT-1 0 mins



STREET SATELLITE



Search Products

SEARCH

Shipment Device **Product**

Product Profiles (1/500)

-20°C Palletized Drug Product

-20°C Drug Product

product description

-20°C Palletized Drug Product

product description

-20°C Drug Product

Last updated by **Admin**
01/12/2025 at 22:32

Lane Id +

Packaging Type/Id +

Total Shelf Life DAYS HOURS MINUTES

Temperature °C °F

Simple **Advanced**

Add Threshold

Limit	Threshold Value	Severity	Duration (Min)	Duration Type	Classification
UPPER...	<input type="text" value="30.4"/>	Alarm	<input type="text" value="0"/>	Cumul...	Reject
UPPER...	<input type="text" value="-1.9"/>	Alarm	<input type="text" value="15"/>	Cumul...	Reject
UPPER...	<input type="text" value="-9.5"/>	Alarm	<input type="text" value="30"/>	Cumul...	Reject
UPPER...	<input type="text" value="-14.4"/>	Alarm	<input type="text" value="360"/>	Cumul...	Reject





Search Alerts

SEARCH

All disabled

All disabled

Last updated by
Darren Nicas
01/07/2025 at 12:25

User Profiles (2/10)

All disabled
All disabled

Default

Default Alert Profile
PAXAFE Default

Alert Types



Push

Text

Email

- Device Shipments
 - Shipment creation alert
 - Leaves origin alert
 - Arrives at destination
 - Completed
 - Alert if shipment has stopped in same location by _____ hours
 - Alert if shipment failed to communicate for _____ transmission intervals (2-10)
 - Alert if shipment reestablishes communication
 - Anticipated arrival delay

- Temperature
 - Alert when there is warning Heat/Cold
 - Alert when there is alarm Heat/Cold
 - Alert when temperature exceeds certain time above/below threshold

