

# Peloton Real Time Frac and Completions

## Traditional Frac Data Limitations

- **No real-time** capability, or passive, data-intensive video streaming
- **No industry reporting standards**
- **Inaccurate**, hand-keyed summary information
- **Unusable formats** – PDFs or CSVs with varying headers
- **Inconsistent formats** from every service provider
- **Missing data** via file save-overs, bankruptcies & acquisitions

## Leading to:

- More onsite personnel & equipment required for data capture and decision making
- Historic data that is unavailable or capital and time intensive to analyze
- No capability for remote, real-time informed completions decisions on rates, pressures, or consumables

And ultimately, higher costs



## Resulting In:

- **Informed, real-time, remote decisions** on everything from treatment optimization to consumable savings
- **Reduction in onsite personnel and manual data capture**
- **Standardized, mapped data** available for any analytics or reporting initiatives



## Peloton Solves Completions Data

- Real time platform used on over **10,000 jobs** in the last **seven years**
- **Software only** solution deployable **anywhere** you operate
- Developed with poor connectivity in mind – **light on data**
- Mobile & Tablet friendly – **check your operations anywhere**
- Algorithm driven **KPI Calculations**
- **Standardized data** from all well service vendors, **in one place**

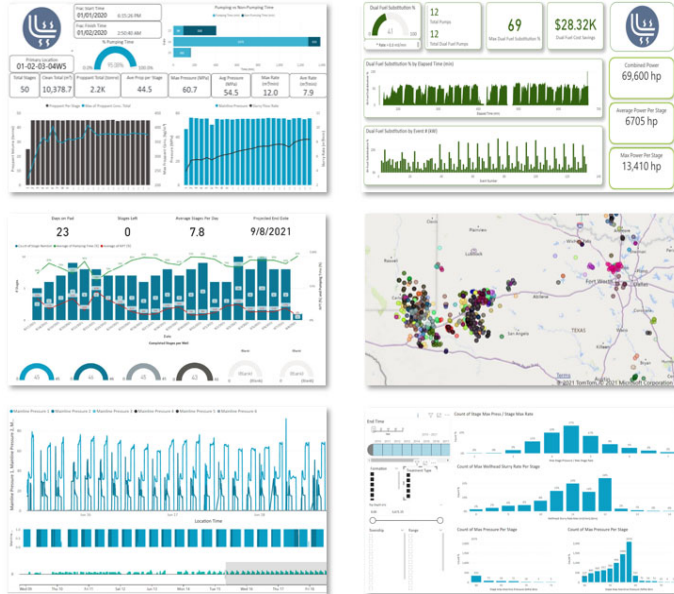
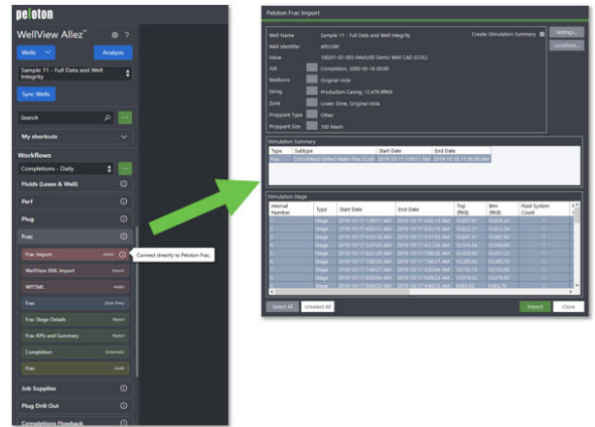
**26 operators subscribed in 28 months**

**100% license renewal rate**

**And immediate cost savings**

## Featuring Seamless WellView Integration

Click, view, and load one to infinite stages, directly from Peloton Frac. Enjoy complete tables, with 55% more fields populated than the leading third-party completions integration. Reduce manual, inaccurate reporting, and redeploy resources towards safe and efficient operations.



## Customizable Analytics

With Peloton Frac's customizable analytics, you can compare wells and stages and visualize operational efficiency. Evaluate pressure risks to gauge limitations for future designs, optimize consumables, and track well servicing emission reductions. Geospatial reporting and activity statuses allow you to reduce travel to remote locations. And, with our dual fuel channels, tell your ESG story like never before.

Our implementation specialists will get your data working for you with dashboarding, mapping and 24/7 support services.

## What Clients are Saying and Saving

*"The WellView plug-in saves my company man 30 minutes of data entry per stage with no more typos—very useful. The pressure analytics enabled us to lower cost & drilling time by 10% or, \$400k in completions savings per well."* – D&C Manager, at 500 mmcf/d shale operator

*"The smart alarms are paying off already. We caught a clogged FR line before it was too late. Downtime on our frac crew is \$275/minute."*  
– D&C Manager, at 405k BOE/d Operator

*"Pricing is extremely cost-competitive and it has easily saved me over \$100K on an analytics project."*  
– Technology & Completions lead at 132k BOE/d multinational operator

*"It's the best real time website for completions. We dialed in our FR Loadings on the first pad we deployed on, resulting in \$42k consumable savings per well."* – Completions lead at Shale Operator

*"Working with Peloton Frac has underscored how much industry data is truly missing, and how important it is to have a historic and go-forward data strategy."* – GM Development at Global Operator

*"We have been able to make decisions from our head office in real time, for the first time, and Peloton Frac has proved invaluable to our operations so far!"* – Senior Completions Engineer at Asia-Pacific Operator

