



# POWER ACCELERATE

Accelerate your Power Platform migration journey!



# Why Migrate?

## Why should I migrate my existing Ms Access applications?

- Audit – security and compliance (GDPR) risks
- Improved Accessibility and collaboration features
- “Noone knows anymore what this app exactly does” – “the person who has developed this app has retired”
- User experience, productivity and mobile use
- Software updates (32 bit) – Out of support

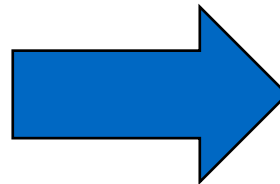
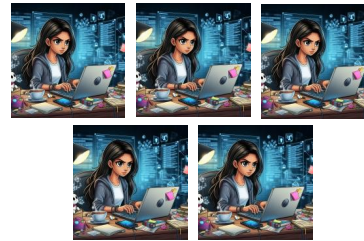
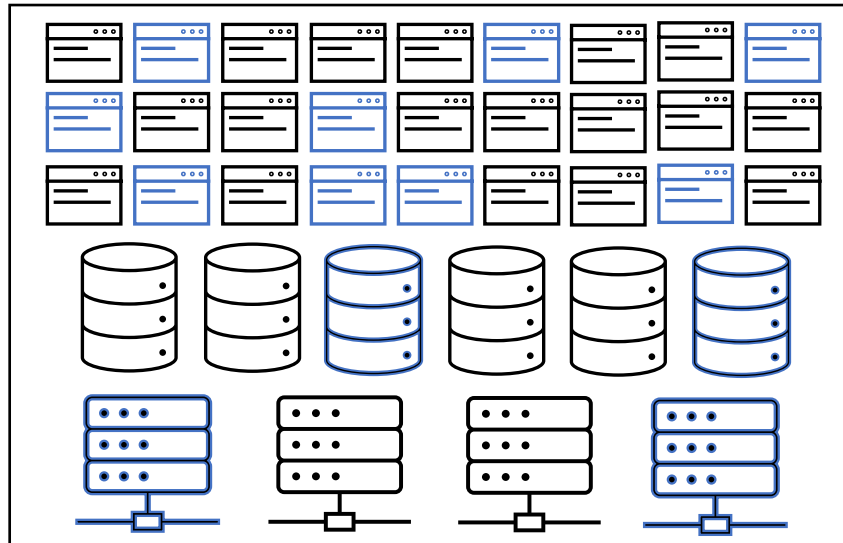




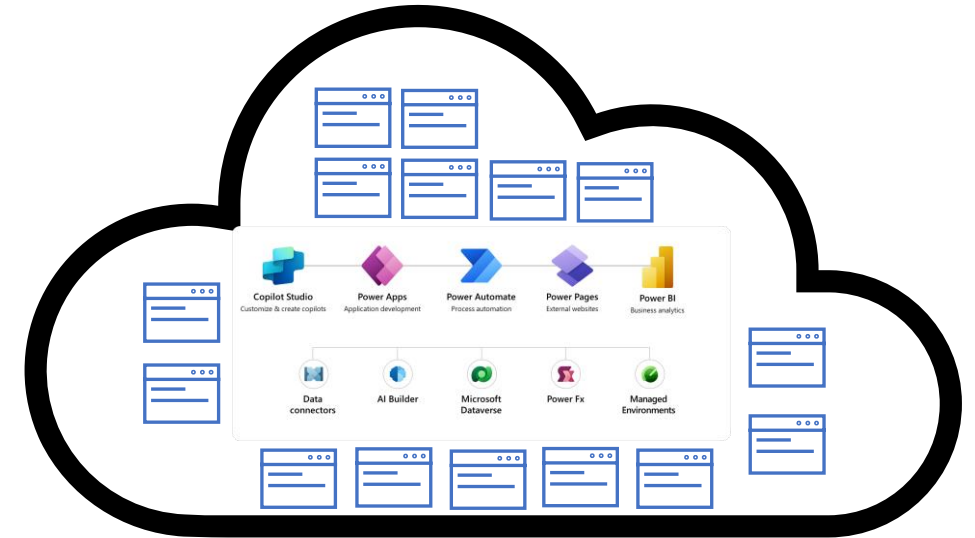
# Companies want to streamline and simplify their IT app landscape

Yet moving existing (legacy) applications 1 by 1 to the Power Platform is an effort intensive and expensive task

## CONTOSO CORP.



## POWER PLATFORM





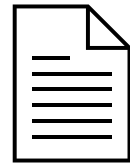


# Migrate with Power Accelerate

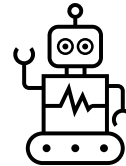
## INTELLIGENT ASSESSMENT, DISCOVERY AND EXTRACTION



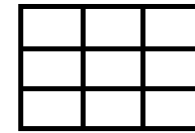
Excel, Access, SQL Server, InfoPath, Mendix and Lotus Notes support.



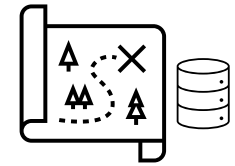
KPI detection and analysis



Smart data model and field type detection.



Data modeling and transformations

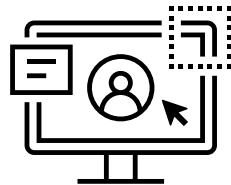


Microsoft Common Data Model (CDM) matching.

## AUTOMATED GENERATION AND DATA MIGRATION



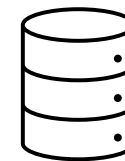
Microsoft Dataverse and SharePoint Lists data model creation incl. tables and fields.



Model-driven app incl. forms, views and sitemap.



Canvas app generation from a provided template.



Data migration incl. relational data.



Security model creation.

+ POWER ACCELERATE COPILOT



Demo



POWER ACCELERATE



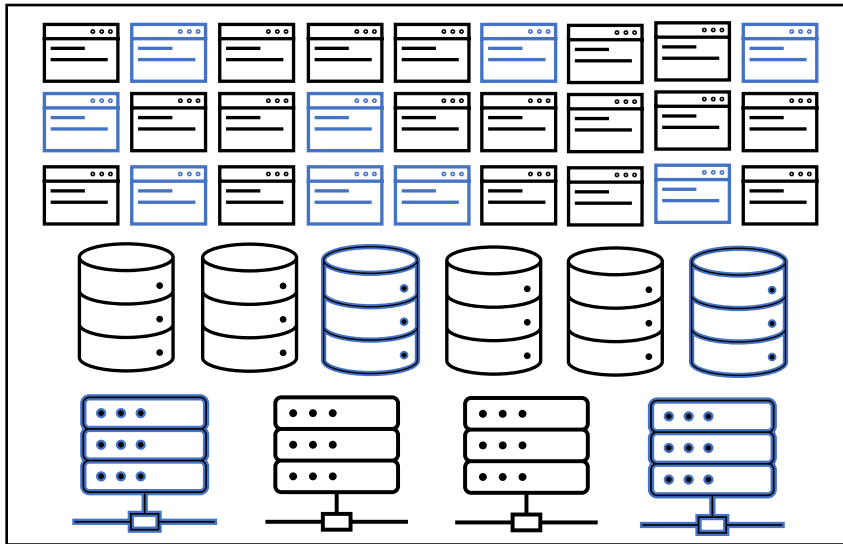
[CLICK TO PLAY](#)



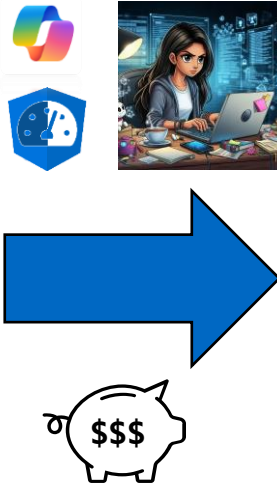
# Accelerate your Power Platform migration journey

Microsoft Copilots and Power Accelerate automate this work and accelerates your journey

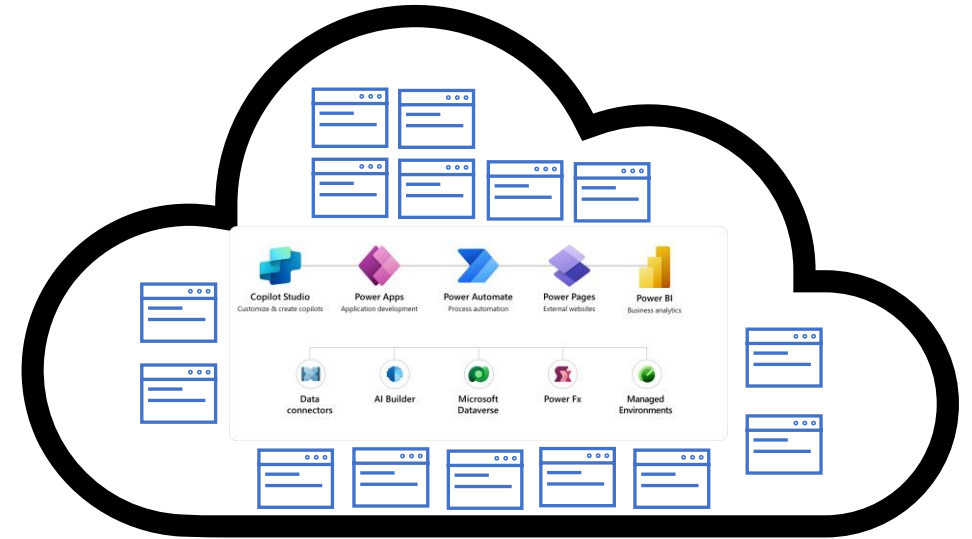
## CONTOSO CORP.



## MICROSOFT COPILOTS + POWER ACCELERATE



## POWER PLATFORM





# Northwind ROI Example

20 tables - 177 Fields – 21 relationships – 511 data records – 27 queries – 34 forms – 11 reports – 2 macros – 1880 lines of vba code

COMPONENT	INPUT
Tables	20
Fields	177
Relationships	21
Records	511
Common data model tables mapped	0
Queries	27
Forms	34
Reports	11
Macros	2
VBA Lines of Code	1880

COMPONENT	EFFORT (HRS)	EFFORT (MINS)	TOTAL HRS	AUTOMATED BY PA
Table	1	60	20	YES
Field	0,1	6	17,7	YES
Hours per relationship	0,2	12	4,2	YES
Form	0,3	18	10,2	NO
Views (Queries)	0,3	18	8,1	YES
Macros	3,8	228	7,6	NO
Reports	3,7	222	40,7	NO
VBA per line	0,025	1,5	47	NO
Security Role per table	0,1	6	2	YES
Solution Configuration per table	0,1	6	2	YES
Common Data model mapping per table	6	360	0	YES
Data migration per table	5,2	312	104	YES
Data migration per relationship	4,3	258	90,3	YES
		<b>TOTAL</b>	<b>355</b>	<b>248,3</b>
		<b>% AUTOMATED BY PA</b>		<b>70%</b>



Power Accelerate is estimated to save **248,3 hrs.** by automating the technical dev effort



# Detailed KPI's through automated assessment

Tables	<b>Queries</b>	Modules	Macros	Reports	Forms	FormDetail
--------	----------------	---------	--------	---------	-------	------------

Name	Number of Records	Is Linked Table?	Number of fields	Number of relationship
Customers	29	FALSE	18	0
Employee Privileges	1	FALSE	2	2
Employees	9	FALSE	18	0
Inventory Transaction Types	4	FALSE	2	0
Inventory Transactions				
Invoices				
Order Details				
Order Details Status				
Orders				
Orders Status				
Orders Tax Status				
Privileges				
Products				
Purchase Order Details				
Purchase Order Status				
Purchase Orders				
Sales Reports				
Shippers				
Strings				
Suppliers				

Name	SQL Statement	Has Relationship
Customers Extended	SELECT IIf(IsNull([Last Name]),IIf(IsNull([First Name]),[Com	FALSE
Employees Extended	SELECT IIf(IsNull([Last Name]),IIf(IsNull([First Name]),[Com	FALSE
Inventory	SELECT Products.ID AS [Product ID], Products.[Product Na	TRUE
Inventory on Hold	SELECT [Inventory Transactions].[Product ID], Sum([Inven	FALSE
Inventory on Order	SELECT [Purchase Order Details].[Product ID] AS [Product	FALSE
Inventory Purchased	SELECT [Inventory Transactions].[Product ID], Sum([Inven	FALSE
Inventory Sold	SELECT [Inventory Transactions].[Product ID], Sum([Inven	FALSE
Invoice Data	SELECT Orders.[Order ID], Orders.[Shin Name], Orders.[SK	TRUE
Order Details Extended	SELECT [Order Details].*, CCurl	
Order Price Totals	SELECT [Order Details Extended	
Order Subtotals	SELECT [Order Details].[Order	
Order Summary	SELECT Orders.[Order ID], Orde	
Product Category Sales by Date	SELECT Orders.[Order Date], Su	
Product Orders	SELECT [Order Details].[Produc	
Product Purchases	SELECT [Purchase Order Details	
Product Sales by Category	SELECT Orders.[Order Date], Pr	
Product Sales Qty by Employee an	SELECT Orders.[Order Date], [E	
Product Sales Total by Date	SELECT Products.[Product Nam	
Product Transactions	SELECT [Product ID], [Order Da	
Products on Back Order	SELECT [Order Details].[Produc	
Purchase Details Extended	SELECT [Purchase Order Details	
Purchase Price Totals	SELECT [Purchase Details Exten	
Purchase Summary	SELECT [Purchase Orders].[Creat	
Sales Analysis	SELECT Orders.[Order ID], Orde	
Shippers Extended	SELECT IIf(IsNull([Last Name]),I	
Suppliers Extended	SELECT IIf(IsNull([Last Name]),I	
Top Ten Orders by Sales Amount	SELECT DISTINCTROW TOP 10 C	

```

Option Compare Database
Option Explicit

Public Enum InventoryTransactionTypeEnum
    Purchase_TransactionType = 1
    Sold_TransactionType = 2
    Hold_TransactionType = 3
End Enum
  
```

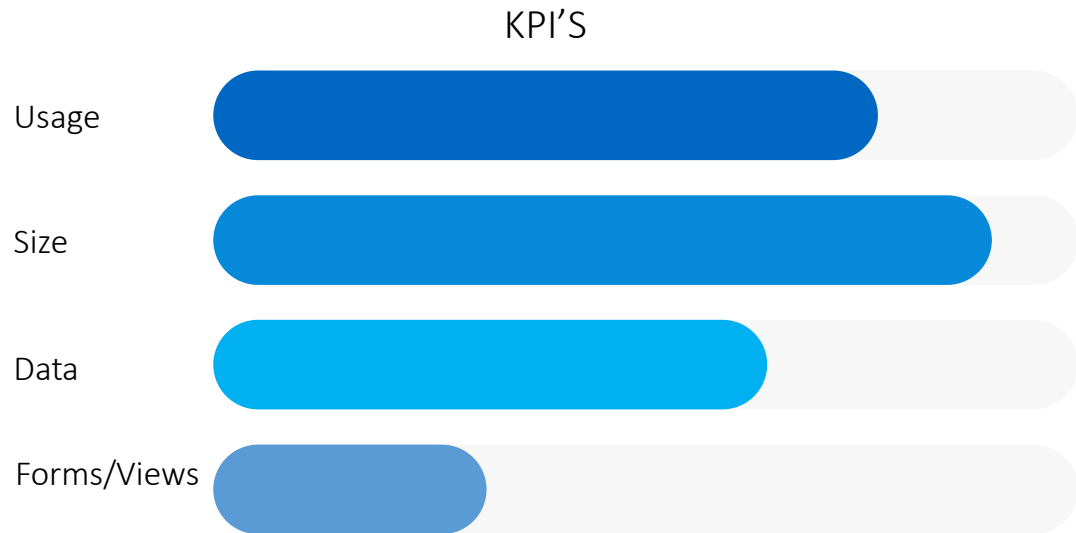
	A	B	C
1	Name	Source Code	Lines Of C
2	CustomerOrders	Option Compare Dat	58
3	Inventory	Option Compare Dat	310
4	Privileges	Option Compare Dat	27
5	RecordsetWrapper	Option Compare Dat	148

Name	Number of Controls	Datasources	Complexity
Customer Details		55 Customers Extended	
Purchases Subform for Purchase Order Details		12 Purchase Details Extended	
Shipper Details		53 Shippers Extended	
Order Details		57 SELECT [Orders.*], [Orders Status].[Status Name], [C	
Purchase Order Details		43 SELECT [Purchase Orders].*, [Purchase Order Status	
Order Subform for Order Details		12 Order Details Extended	
Receiving Subform for Purchase Order Details		8 Purchase Details Extended	
Employee Details		55 Employees Extended	
Supplier Products Subform		12 Products	
Customer Orders Subform		20 Order Summary	
Supplier Purchases Subform		12 Purchase Orders	
Employee Orders Subform		22 Order Summary	
Inventory List		22 Inventory	
Order List		26 Order Summary	
Product Sales by Category Chart		8 Product Sales by Category	
Customer List		44 Customers Extended	
Shipper List		44 Shippers Extended	
Sales Analysis Form		10 Sales Analysis	
Product Category Sales by Month		6 Product Category Sales by Date	
Active Orders Subform for Home		10 SELECT Orders.[Order ID], Orders.[Employee ID], Or	
Inventory to reorder Subform for Home		6 SELECT Inventory.* FROM Inventory WHERE (([Inve	
Home		35 Strings	
Product Transactions Subform for Product Details		10 Product Transactions	
Product Details		40 PiForm Nam:Control Ni:Field Data TopLoc LeftLoc Height Width ParentCor LabelCapt:Source	
Login Dialog		6 Customer Auto_Title 109 60 1236 465 7410	Customers Extended
Sales Analysis Subform for Home Chart		12 StCustomer Auto_Logo 103 60 300 630 810	Customers Extended
Employee List		48 EtCustomer cboGoToC 111 690 1030 360 1440	Customers Extended
Startup Screen		4 Customer cboGoToC 100 690 300 360 660 cboGoToC &Go to	Customers Extended
Purchase Order List		22 pCustomer cmdEmail 104 690 2540 360 1880	Customers Extended
Product Sales by Total Revenue Chart		6 pCustomer cmdCreati 104 690 4490 360 2030	Customers Extended
Product Sales Qty by Employee Chart		4 pCustomer cmdSavea 104 690 6590 360 1260	Customers Extended
Supplier List		44 sCustomer txtDuplica 109 60 9300 315 2820	Customers Extended
Supplier Details		57 sCustomer cmdClose 104 691 11040 330 555	Customers Extended
Sales Reports Dialog		19 Customer tabContac 123 240 225 7730 11705	Customers Extended
		Customer General_P 124 660 320 7220 11520	Customers Extended
		Customer Company 109 840 2090 315 3500	Customers Extended
		Customer Company 100 840 420 315 1605 Company Company	Customers Extended
		Customer First Name 109 1930 2090 320 3500	Customers Extended
		Customer First Name 100 1930 420 320 1605 First Name:First Name	Customers Extended
		Customer Last Name 109 2310 2090 320 3500	Customers Extended
		Customer Last Name 100 2310 420 320 1605 Last Name>Last Name	Customers Extended
		Customer Job Title 109 2690 2090 320 3500	Customers Extended
		Customer Job Title 100 2690 420 320 1605 Job Title Job Title	Customers Extended
		Customer Business F 109 3790 2090 320 3500	Customers Extended
		Customer Business F 100 3790 420 320 1605 Business F:Business F	Customers Extended
		Customer Mobile Ph 109 4160 2090 320 3500	Customers Extended
		Customer Mobile Ph 100 4160 420 320 1605 Mobile Ph:Mobile Ph	Customers Extended

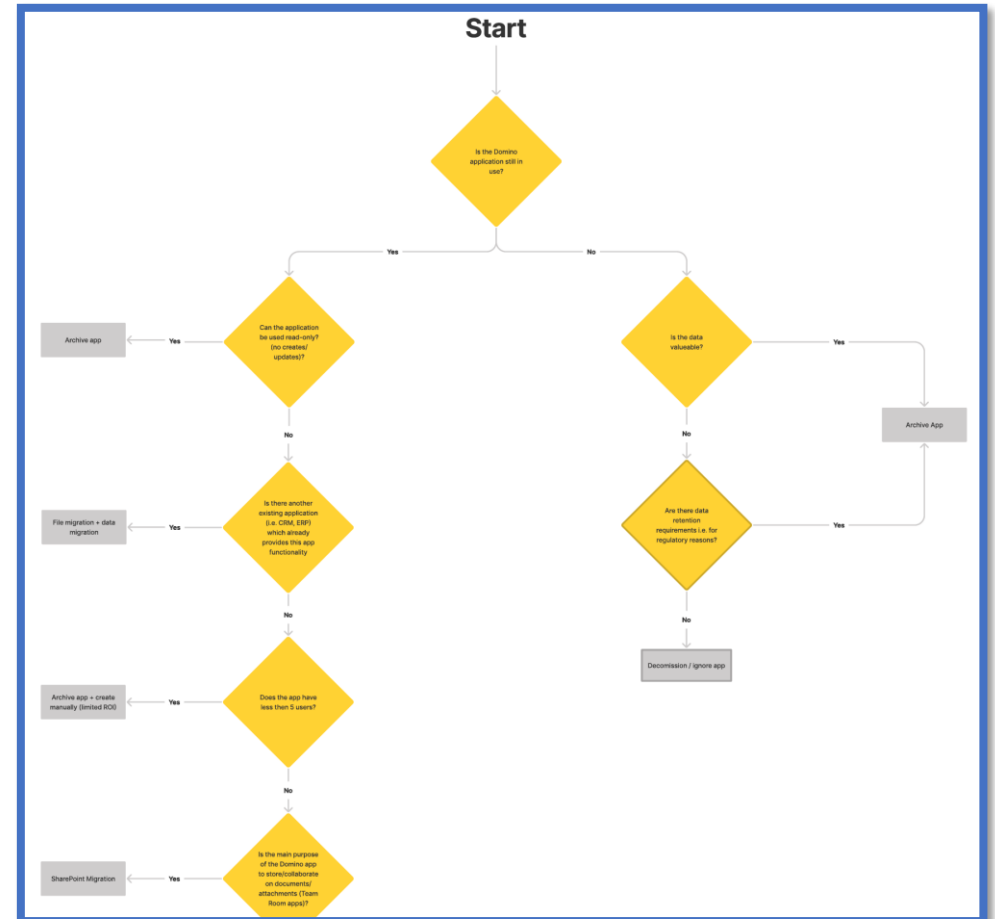




# Categorize, Scope and Prioritize based on KPI's



Domino migration decision tree





# Power Platform App Migration Targets



## Decommission

Decommission apps which are no longer needed/in use.

## Migrate with Microsoft Copilot

In-use simple apps with limited data and logic

## Archive to Copilot Studio

App that are not in use but contains important data that needs to be retained.

## Migrate with Power Accelerate

In-use medium-complex apps that are business data, process and/or workflow centric





# Our recommended migration journey



01

## Pilot

Rapid proof of value

Showcase value and outcomes fast  
Get real app in front of your end-users

02

## Assessment

Assessment, categorization  
and prioritization

Rapid assessment to  
gather main kpi's and  
decide destination

03

## Execution

Decommissioning, Archiving &  
Migration

Self-service citizen development  
archiving & migration  
Support from SI Partner



# New Zealand Department of Conservation



## Background

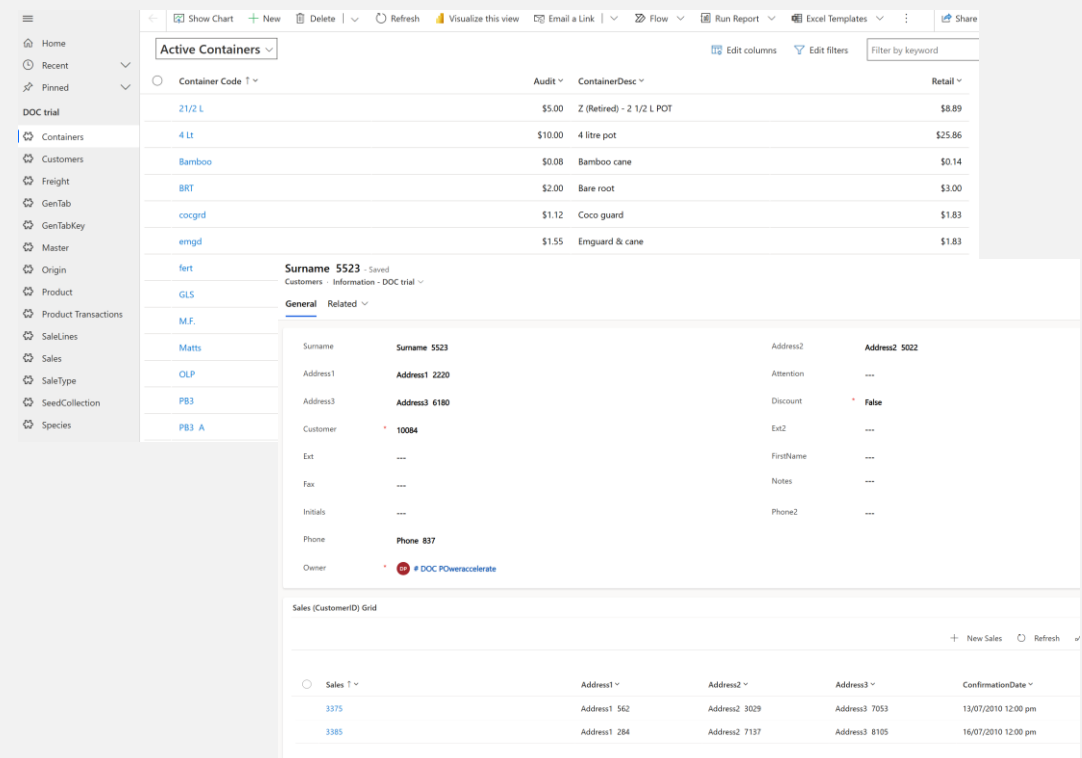
The New Zealand Department of Conservation (DOC) is responsible for preserving the country's natural environment, managing national parks, and promoting conservation efforts. They safeguard native species and ecosystems while fostering a strong connection between people and nature.

- 117 legacy (32-bit) Ms Access applications which can't be migrated to M365 in the cloud need to be migrated to Microsoft Power Platform
- Power Accelerate executed a pilot assessment and migration engagement migrating a complex Nursery Ms Access database using its migration automation features (**15 tables, 109 fields, 9 relationships, 154K records, 57 queries, 26 forms, 20 report and 7737 lines of VBA code**).



## Outcomes

217 hrs. of manual and repetitive work automated using Power Accelerate automation



The screenshot displays the Microsoft Power Apps interface. The top section shows a table titled 'Active Containers' with columns for Container Code, Audit, ContainerDesc, and Retail. Below this, a detailed view of a customer record is shown, including fields for Surname, Address, Customer, and Phone. The interface also includes a navigation pane on the left and various action buttons at the top.

Container Code	Audit	ContainerDesc	Retail
21/2 L	\$5.00	Z (Retired) - 2 1/2 L POT	\$8.89
4 Lt	\$10.00	4 litre pot	\$25.86
Bamboo	\$0.08	Bamboo cane	\$0.14
BRT	\$2.00	Bare root	\$3.00
cocgrd	\$1.12	Coco guard	\$1.83
emgd	\$1.55	Emguard & cane	\$1.83



# POWER ACCELERATE

Accelerate your Power Platform migration journey!

Contact us today at [info@poweraccelerate.com](mailto:info@poweraccelerate.com)