

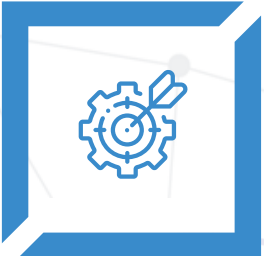


# PowerON Intro

Windows 365 & Azure Virtual  
Desktop – PoC & Pilot



# PowerON Introduction



Managed Services



Professional Services



Support Services

- Headcount** 50+
- Managed Devices** 32,500+
- Coverage** UK HQ, Global Mgmt.
- Marketplace** 6+ Co-Sell Services

Microsoft Partner



- Gold Security
- Gold Cloud Platform
- Gold Windows and Devices
- Gold Cloud Productivity
- Silver Enterprise Mobility Management



East Midlands Ambulance Service NHS Trust

Camden and Islington NHS Foundation Trust



ROYAL VOLUNTARY SERVICE



St. Helens Council



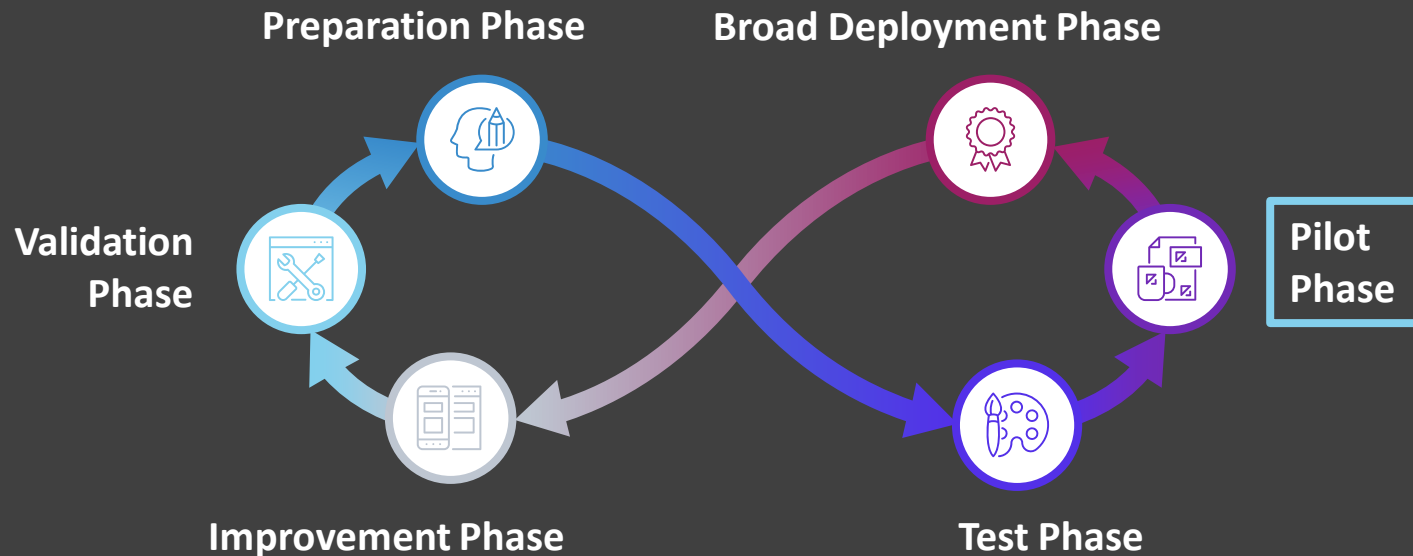
arcserve®

# Windows 365 & Azure Virtual Desktop

## Proof of Concept & Pilot Service

### Starting your W365 or AVD Journey...

Assessing, Testing, Designing your PoC or Pilot is the crucial first step in adopting new ways on empowering end users with EUC services in your organisation. Our Windows Lifecycle model helps you start and continue this journey with enterprise ready Windows 365 & Azure Virtual Desktop PoC or Pilot.



Windows 365 & Azure Virtual Desktop open new ways of working with Cloud PC, this service allows you to see that firsthand within your organisation.

#### Our Approach allows us to support IT with:

- The need to upgrade aging systems or replace large hardware footprint
- Lack of secure remote access for contractors, remote staff or BYOD scenarios
- Increased remote usage causing bandwidth and networking issues
- Legacy licensing costs for RDS and 3rd party VDI
- Low ROI from existing VDI due to fluctuating remote working requirements

Microsoft  
Partner

Gold Security  
Gold Cloud Platform  
Gold Windows and Devices  
Gold Cloud Productivity  
Silver Enterprise Mobility Management

MICROSOFT ADVANCED  
SPECIALISATION

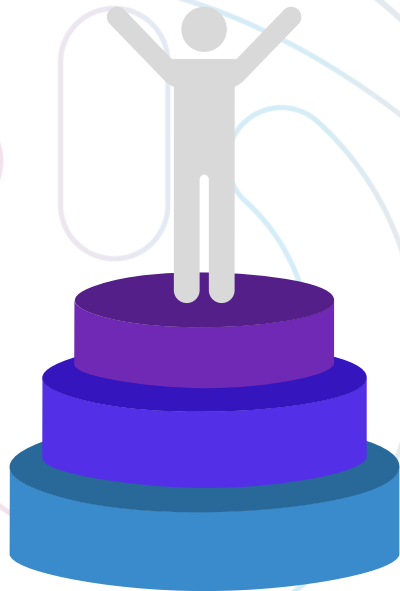
EMS ELITE PARTNER

# Customer Wins

[Details here](#)

## NHS South, Central & West CSU

Azure Virtual Desktop Proof Of Concept for NHS staff.



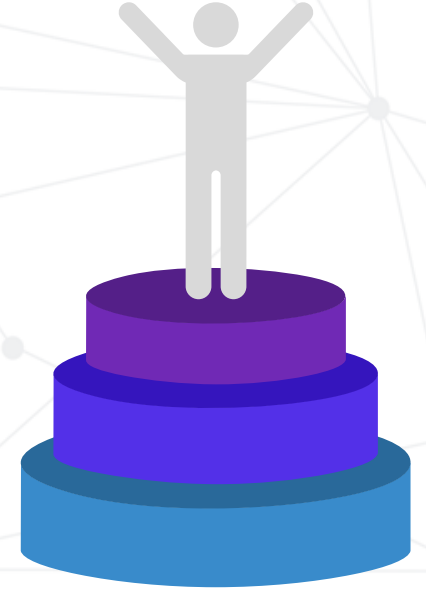
## Reckitt

Global PoC & Rollout of Azure Virtual Desktop across Global sites, users & languages.

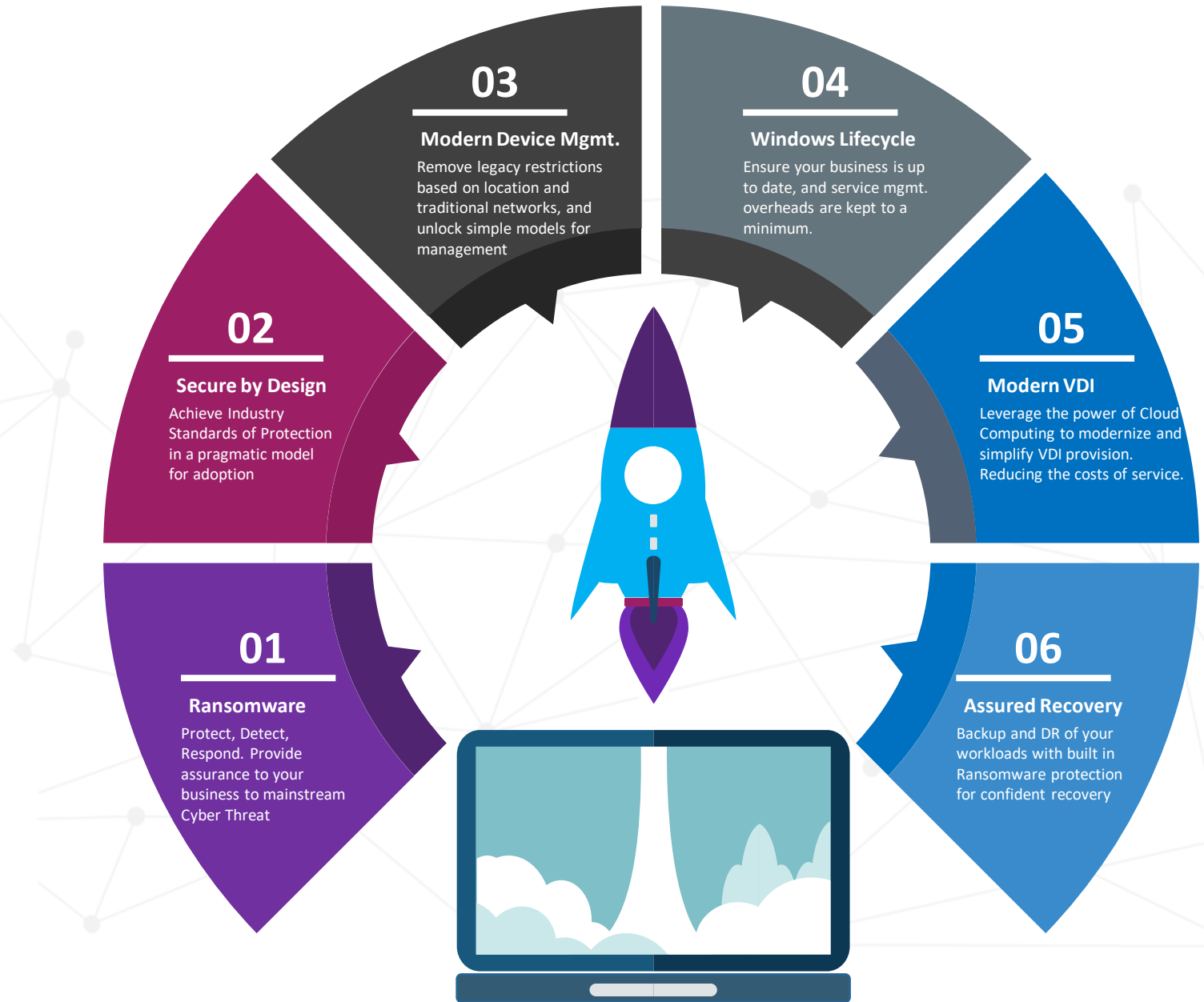


## Brunswick Group

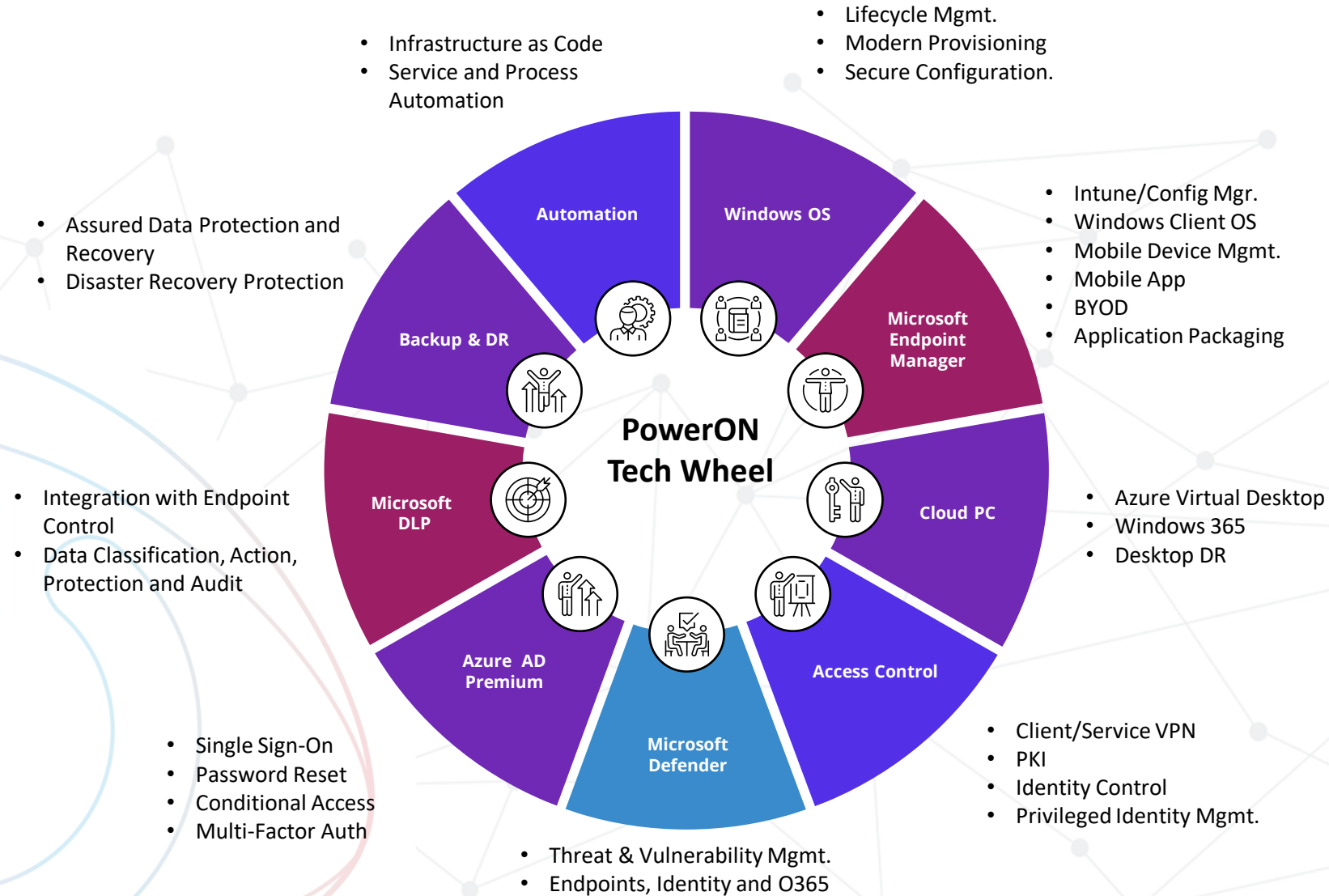
Azure Virtual Desktop Managed Service, to enhance EUC delivery across mixed user estate.



# Focus Business Solutions



# The PowerON Tech Wheel



# Social Responsibility



## Investing in our Communities



**Mental Health**



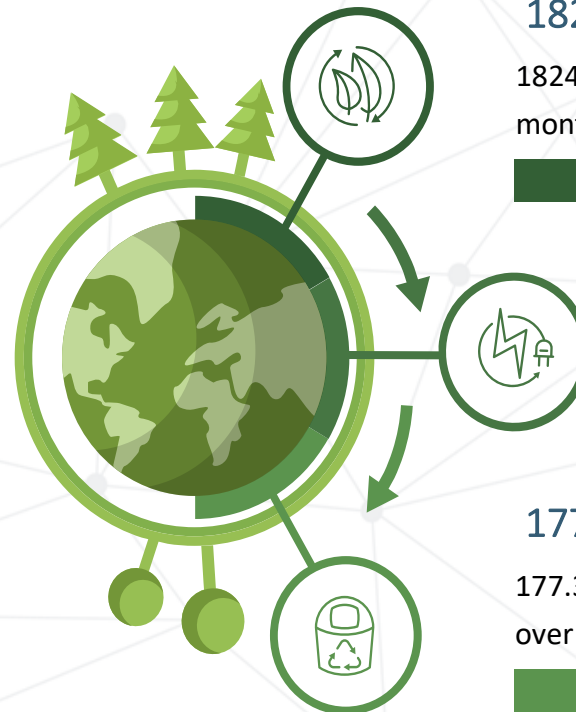
**Inclusion**



**Giving**



## Investing in our Environment



### 1824 Trees Planted Every Month

1824 trees planted every month growing to 2400 every month over the course the coming year.



### 177.3 Tonnes of CO2 Removed Every Month

177.3 rising to 233.3 tonnes of CO2 removed every month over the course of the coming year.



# GET IN TOUCH WITH US



<https://www.linkedin.com/company/poweronplatforms/>



@PowerON\_UK



PowerON Platforms, Units 15-16  
Escrick Business Park, York, YO19 6FD



+44800 3029280



[info@poweronplatforms.com](mailto:info@poweronplatforms.com)



[www.poweronplatforms.com](http://www.poweronplatforms.com)