

Simplify Office 365 Multi-tenant Management

Microsoft Office 365 is one of the most widely used enterprise cloud platforms. However, organizations that move between or manage multiple tenants due to mergers or acquisitions lack key capabilities their users normally rely upon.

Microsoft Office 365 Multi-tenant Integration and Inter-tenant Migration: 2-Day Assessment

Preeminent Solutions can assist with the common problems related to multi-tenant integration and inter-tenant migration, helping you avoid disruption while maintaining user productivity and collaboration. We'll help ensure a unified email domain, unified global address list, and unified calendar lookups to keep your users operating smoothly throughout the transition.



Why choose Preeminent's 2-Day Assessment?

- Get a complete assessment of your current environment, business requirements, and future needs for a customized integration and migration roadmap
- Understand the specific requirements needed for a successful migration and onboarding
- Maximize the value of your Office 365 investment and minimize costly disruptions throughout the transition

Experts you can trust

- Microsoft Gold Cloud Partner
- 15+ years of expertise helping organizations transform & succeed with Microsoft technology
- Trusted by industry leaders, including New York Times, BMW, & Capital One

**We're Microsoft certified in
Deployment Planning Services.**

Flexible to meet your needs

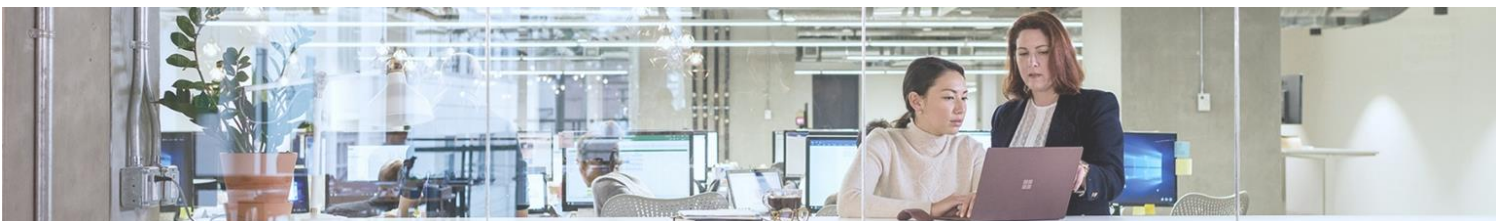
- Flexible service that adapts to your needs with no hidden surprises
- Proven methodology and thorough evaluation to help you get the most value out of your Office 365 migration

**We'll get you where you need to
be and get it done right.**

Support you can rely on

- Get help on the first call, with dedicated support to resolve your issues & questions swiftly
- We're with you every step of the way to navigate any challenges and ensure we will meet (or beat!) your expectations

**We're committed to your
success.**



Let us put Office 365 to work for you.

Office 365 Multi-tenant Integration and Inter-tenant Migration: 2-Day Assessment

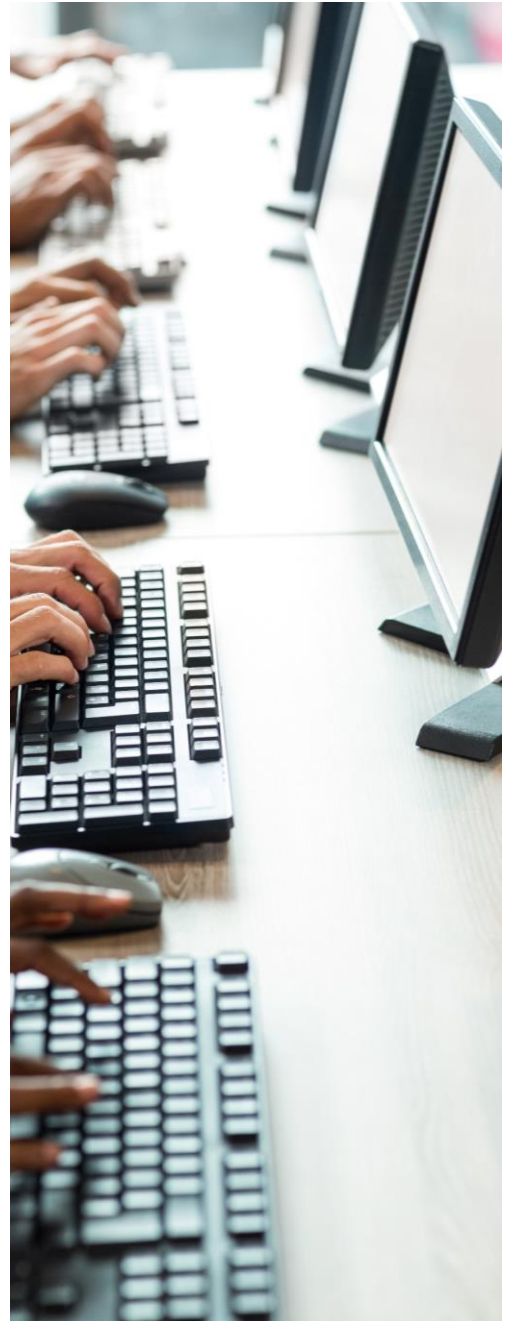
Many organizations today are faced with integrating multiple Office 365 accounts in situations like mergers and acquisitions. In other scenarios, there might be a need to consolidate tenants on different versions with the goal of reducing costs or the complexity of daily operations. Yet this process can be lengthy and requires careful planning in order to avoid disruptions.

This 2-day assessment by Preeminent will provide you with the guidance to onboard you to Microsoft Office 365 swiftly and successfully, removing the guesswork and potential pitfalls. **Tailored to your needs by specialized engineers who know the technologies inside-out, this engagement will provide:**

- **A thorough review of your**
 - Current environment
 - Business requirements
 - Technical requirements

- **Expert recommendations on**
 - Integration/Migration strategy using Microsoft best practices
 - Vendor agnostic tools to migrate your workloads
 - Data security and governance considerations

- **Guidance on other service migrations necessary, including**
 - Exchange
 - SharePoint
 - OneDrive
 - Teams
 - Intune
 - Azure AD



Why Preeminent Solutions, Inc?

With over 15 years of experience, we've helped leading Fortune 500 companies simplify their IT while transforming their environments for a digitally-driven future. We have the proven expertise to navigate any challenge and are passionate about our work – it shows in every project we manage. At Preeminent Solutions, we stand by our commitment to leaving your business better than when we joined you.