



PT Digital
Smart Manufacturing

Manufacturing Execution System

OpRizeTM

**By manufacturers
For manufacturers**

Campus Premier Tech
1 Avenue Premier, Rivière-du-Loup,
Québec, CANADA,
G5R 6C1

We solve your challenges.

Discover our revolutionary SaaS manufacturing execution system designed to meet the needs of manufacturers. Our solution eliminates the complexities of traditional systems and offers a modular platform, perfectly adapted to your needs to increase your productivity and profitability.



End-to-end Support

We support you throughout the process with comprehensive assistance, from project planning to deployment, evolution, and improvements. Benefit from 24/7 support to sustain your operations.



Rapid Implementation

Our SaaS solution allows for rapid implementation, requiring minimal involvement from your IT team and easily adapting to the changing needs of your manufacturing environment.



Security and Peace of Mind

We take care of the security of your data and ensure maximum availability through cloud infrastructure. Focus on growing your business, we manage maintenance and updates for you.



Quick Return on Investment

You can start modestly and deploy the modules as your business progresses. This way, you achieve a better return on investment and reduce risks.

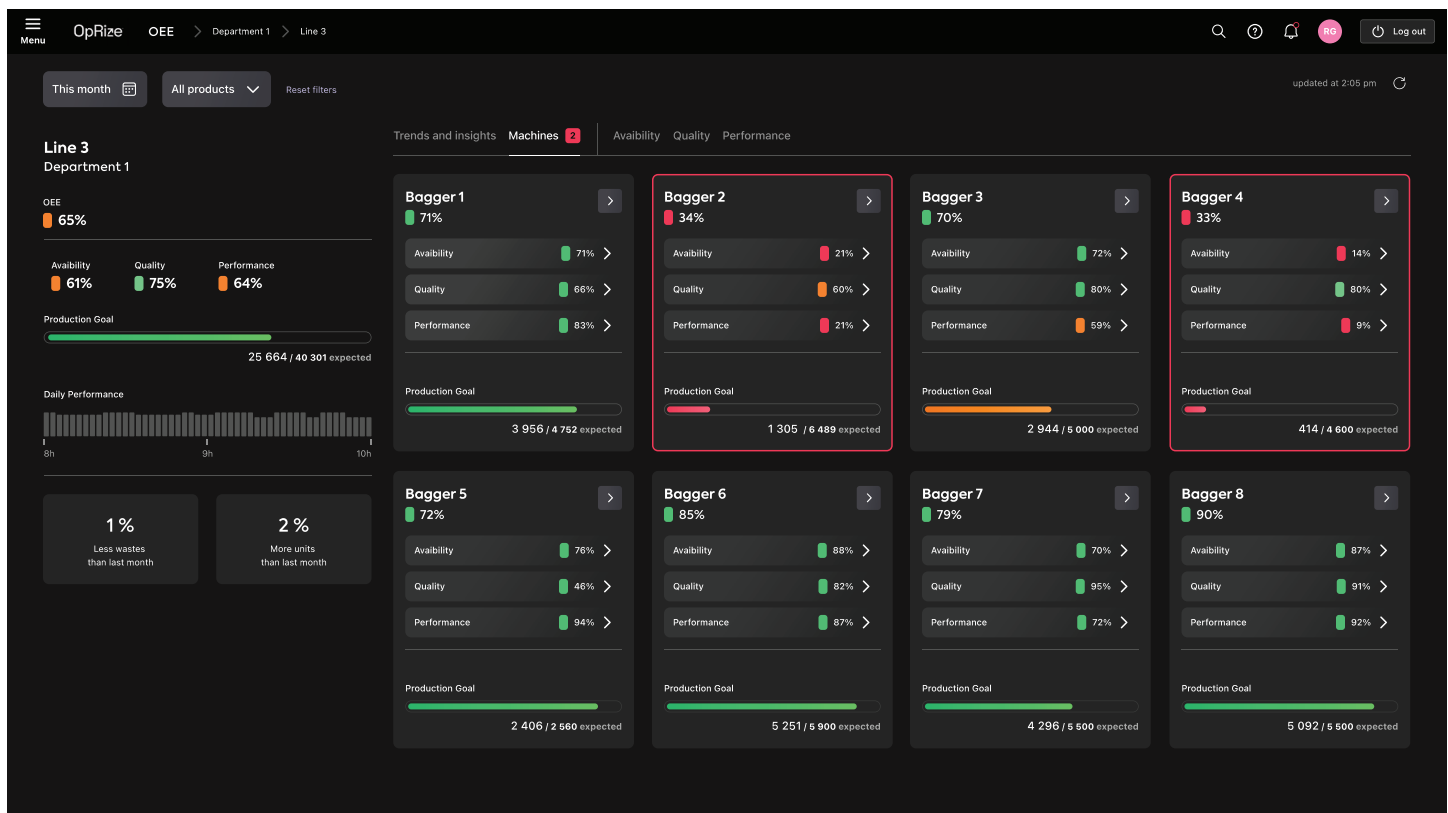


Real-time Visibility and Ease of Use

Access critical data about your production operations at any time with an interface that is easy for your operators to use.

Get Connected – Data Acquisition

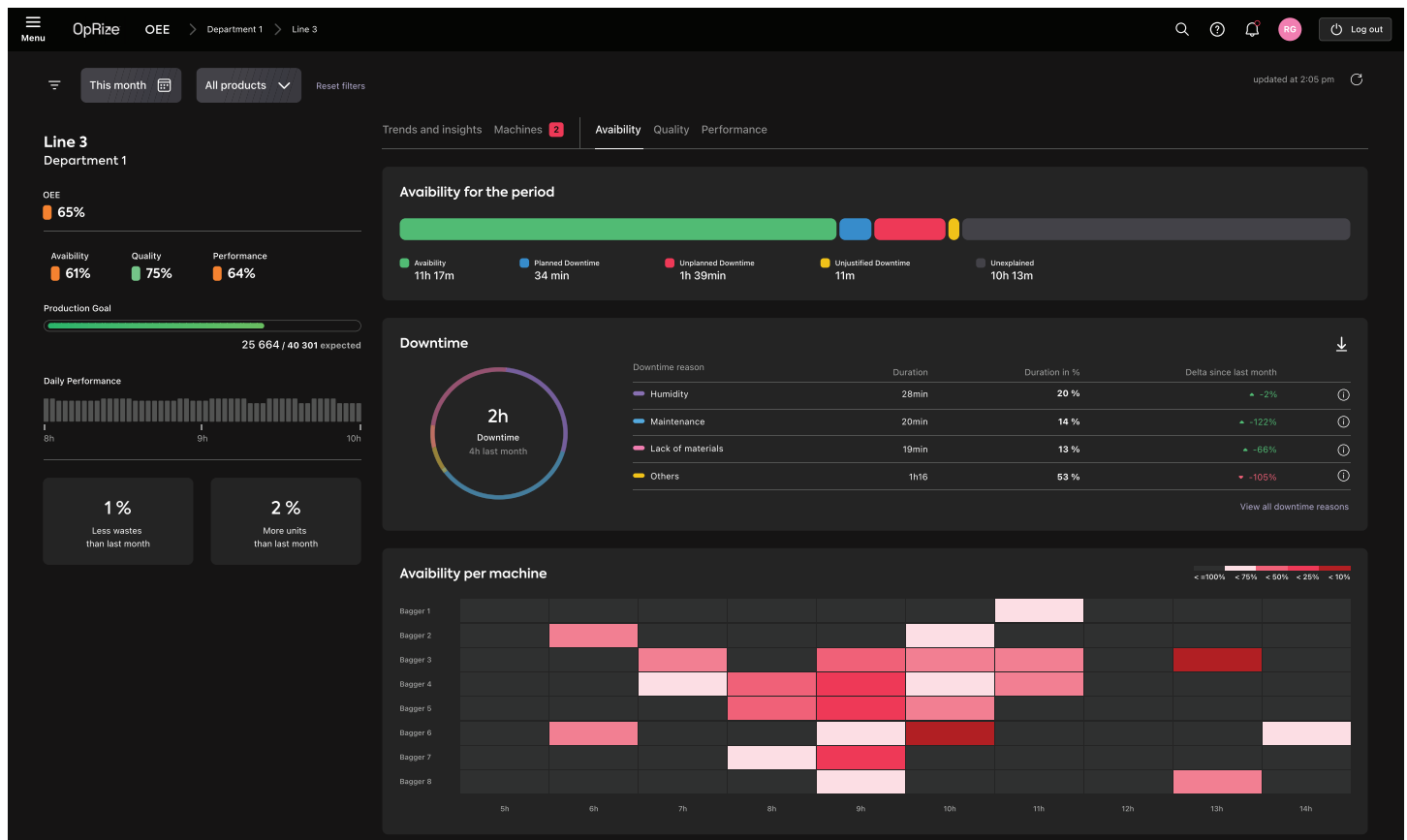
Connect your equipment, then collect and visualize the data generated from it.



- The connectivity of your equipment
- Real-time data collection
- Accessibility of data at any time and any place
- Correlation of data in various graphic forms
- Automatic analysis and comparison of key metrics
- Diagnosis of your equipment efficiency
- Data availability for other systems

Be Efficient - Data Analysis

Quality management, OEE measurement, downtime tracking, here's everything you need to improve your efficiency to reach operational excellence.



- Calculate the overall equipment efficiency - OEE
- Monitor equipment availability rate, quality rate, and performance rate according to its capacity.
- Monitor equipment status.
- Automatically account for downtime reasons and their duration.
- Set custom alarms for out-of-bounds data.
- Contextualize efficiency data by product/SKU.
- Centralize data from various quality systems.
- Support the decision-making process.
- Easily create dashboards and BI reports.

Keep Track – Traceability & genealogy

Track your products through all production steps.

Menu

Work Order

Downtimes

Events

Files

Time Sheets

OpRize

Residential assembly

Events

Edit the Event

?

RG

Logout

Edit the Event 45789

Informations

Edit Informations

Name:

2024-003-16-1608

Work Order Id:

456 899

Initial Length

47.5 m

Created at:

2024-03-17 16:44

Shift:

Morning (6-12h)

Initial Width

3.5 m

Last modified at:

2024-03-17 18:10

Assignment:

R.G.

Initial Height

38.5 mm

Asset:

Bagger 12

Event Status:

In progress

Initial Depth

64.5 mm

Event Type:

Downtime

Data Status:

-

Length

2.75 m

Product:

Promix 2.6kg

Quality Status:

Good

Width

45.5 mm

Start Time:

2024-03-16 16:08

Result on:

-

Height

31.5 mm

End Time:

2024-03-16 16:08

Depth

61.5 mm

1. Attributes

Field required

Attribute	08:10	08:30	08:50	09:10	LR	LW	Target	UW	UR
ZT-3 CS Vacuum	1.9	1.9	1.9		< 1	< 1.5	1.8	> 2.5	> 2.8
ZT-3 CS P1 Pressure	1.9	1.9	1.9		< 1	< 1.5	1.8	> 2.5	> 2.8
ZT-3 CS P2 Pressure	1.9	1.9	1.9		< 1	< 1.5	1.8	> 2.5	> 2.8
ZT-3 CS P3 Pressure	1.9	1.9	1.9	1	< 1	< 1.5	1.8	> 2.5	> 2.8
ZT-3 CS Extruder RPM	1.9	1.9	1.9		< 1	< 1.5	1.8	> 2.5	> 2.8

Reset Attributes

Back

Save modifications

- Track information on the components of a product
- Manufacturing Conditions

- Contextualize data based on production events, pallets, orders, bags, or other

About us

The expertise of Premier Tech Digital is based on 30 years of experience in implementing manufacturing execution systems internationally. We are manufacturers who accelerate the digitalization of manufacturers with human-centered technologies delivered as a service.

Premier Tech Digital is one of the business groups of Premier Tech, a company that has been around for over 100 years.

Contact :

Premier Tech Digital

Smart Manufacturing | America
info@ptdigital.com
1 (418) 932-4413

Smart Manufacturing | Europe
verl2@premiertech.com
+33.5.35.54.23.98

www.ptdigital.com