



Data

Integration

Break down your data silos and take the next step towards being **data-driven**



On average, a person generates 1.7 MB of data per second.



55% of company data is not available to decision makers.

Collecting data means large, disconnected, point-of-life efforts that take a long time, generate little credibility, and are not replicable.



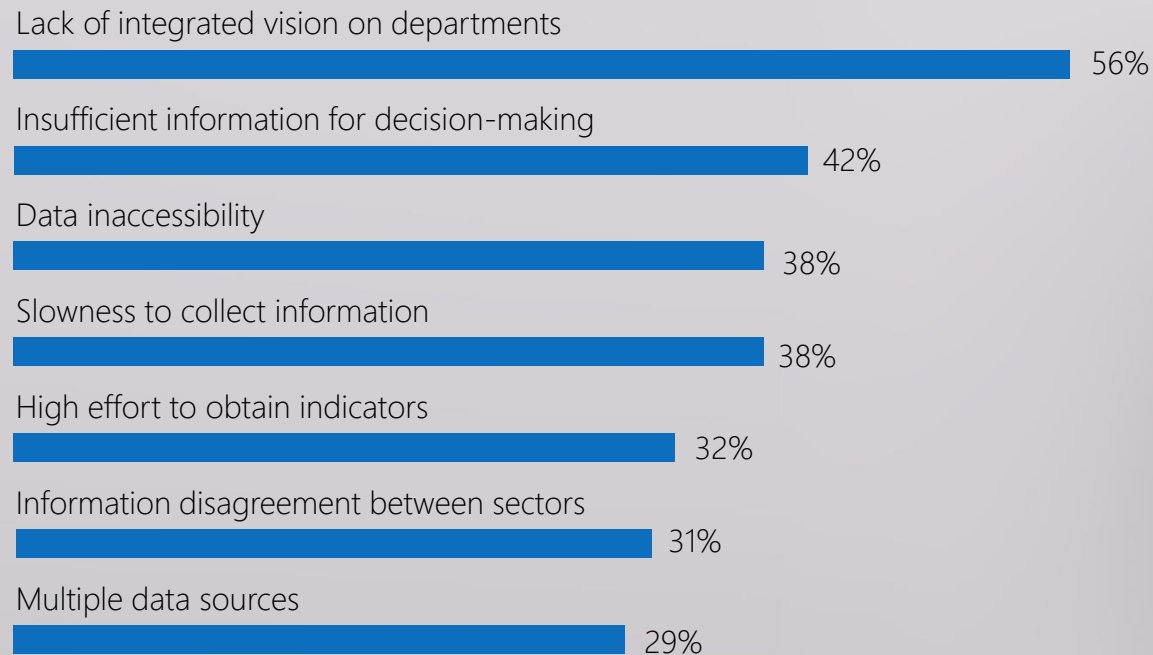
The information produced ends up being isolated within its departments, systems, devices, or business units in

DATA SILOS

No one has a full view of the situation, and the disconnect of information means communication and decision-making will fail.

Data is an **asset** of great value. When it's contained in silos, the company cannot use this asset to boost its growth.

45% of the time, BI users can't get the data in time for decision-making.



57% of decision makers say data silos are the biggest challenge for a data-driven culture.

- 2019 The State of Digital Experience

47%

CMOs say data silos are one of the most harmful things to customer experience.

- 2020 Vena Industry Benchmark Report

57%

CFOs say data silos and the number of data sources and varieties are a challenge.

- 2021 Logicalis Global CIO Survey

75%

CIOs struggle to unlock data insights across departments in their organization.



How about **breaking the silos** of your business and **reaching your entire perimeter** through an integrated and democratized **base of data?**

Data integration empowers your employees with the indicators they need to make the right decisions.

67%

Companies are relying on data integration to support analytics and BI platforms today, and 24% plan this for the next 12 months.

- Estudo de Mercado de Pipelines de Dados 2020 da Dresner Advisory Associates

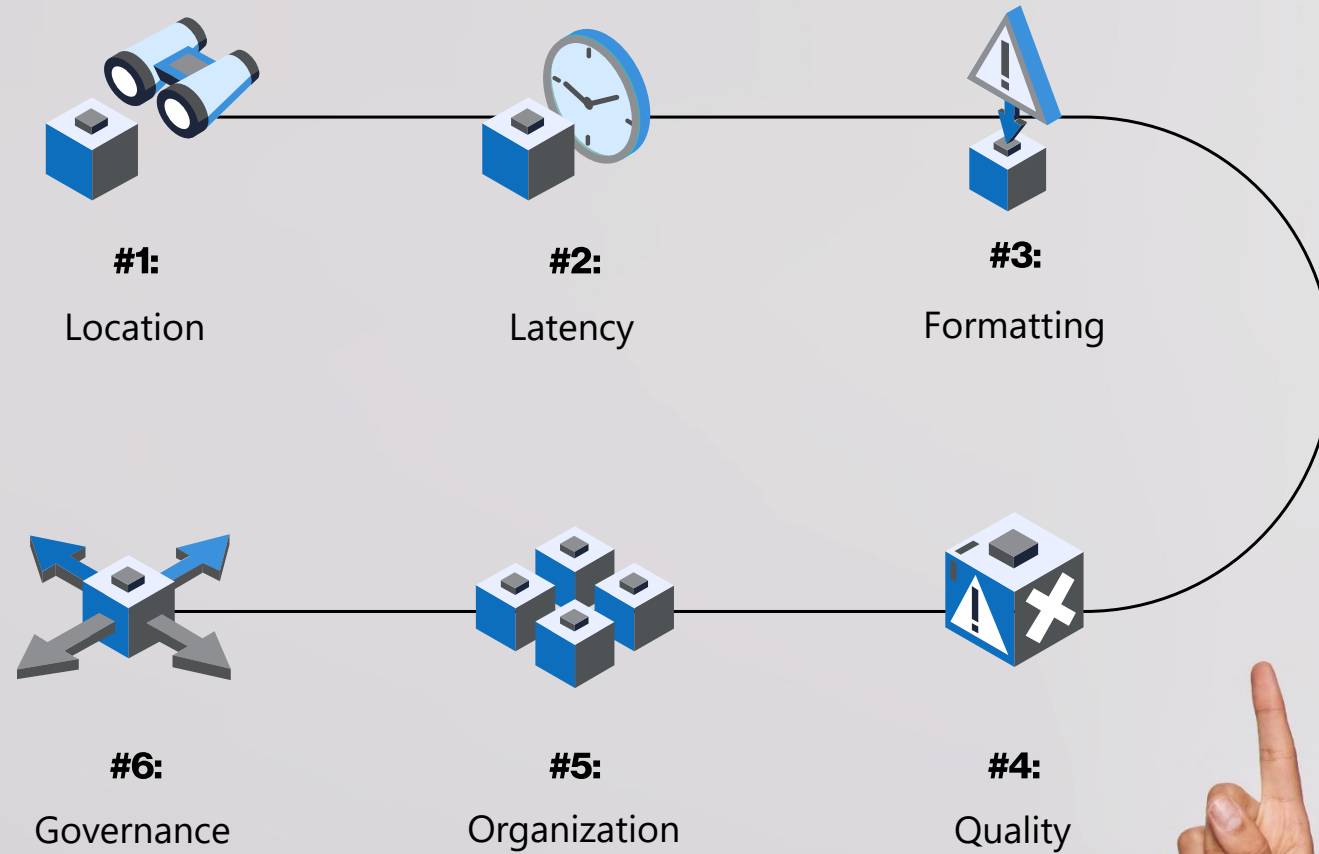
70%

Organizations plan to invest in data warehouses or cloud solutions for more advanced data analysis and modeling.

80%

Business leaders say data integration is critical to the success of their operations.

- Estudo de Mercado de Pipelines de Dados 2020 da Dresner Advisory Associates



Six biggest challenges of
integrating data





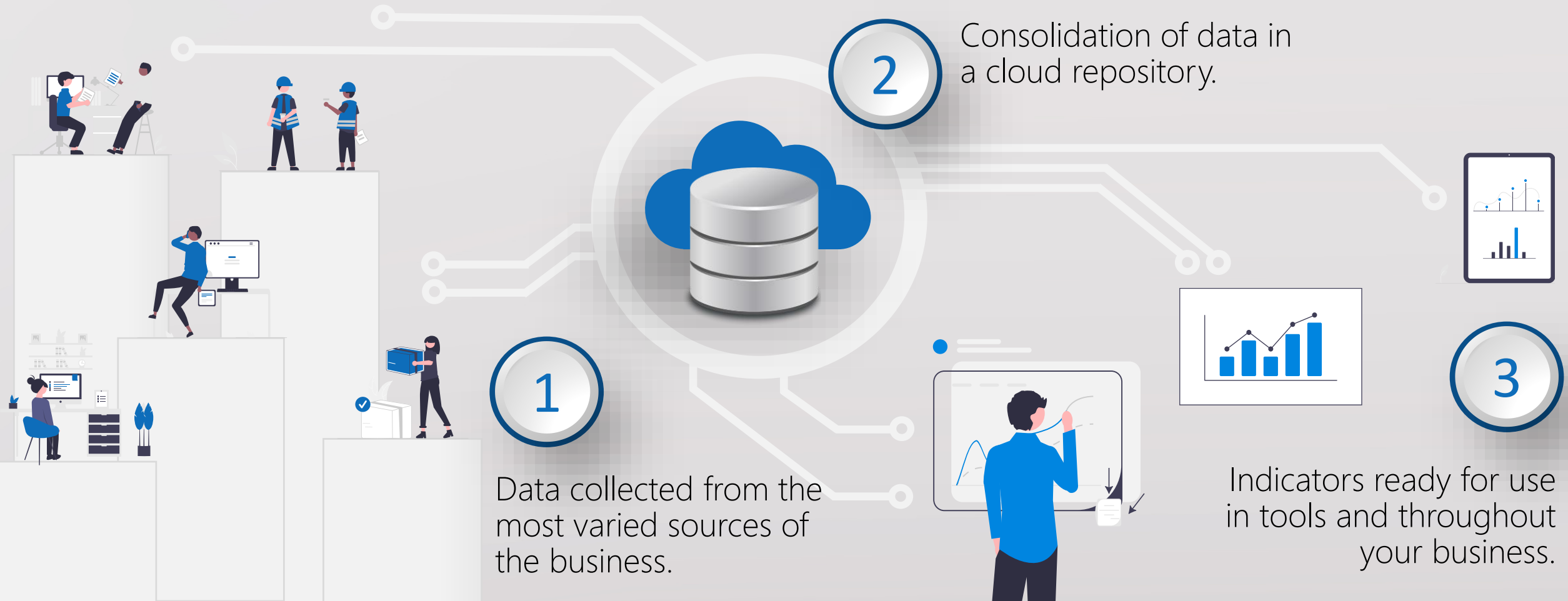
BRING
YOU

THE VISION

BEYOND
YOUR

REACH

Introduce a centralized repository of consumer-ready data from your business areas.



Break silos accurately and assertively with a lightweight, lean data integration start kit.

1 Choose from a **data lake**, **data warehouse**, **data lakehouse**, or combine these options.

Choose up to **3** distinct **sources** for **data collection**, be they systems, files, or storage bases.

3



Set up to **10** indicators of your choice, and receive it **modeled** and ready for **generating** dashboards, reports, and insights.

10

Count on a hands-on **service** that will use the optimal capabilities to **start your data integration.**

Integration Architecture

Design and implementation of a flexible architecture comprising the mechanisms and processes necessary for data collection, ingestion, transformation, storage, and availability.

Data Warehousing

Implementation of a relational data repository designed for BI querying and analysis. Includes data already transformed, cured, and derived from transactions from single and multiple sources.

Data Ingestion

Creation and orchestration of compatible tools for data collection, processing, synchronization, and monitored delivery in the unified repository.

Data Modeling

Organize the data and define the relationship between its elements, facts, measures, and dimensions to give it a structure aligned with the way your business needs to generate queries and reports.

Modern Data Lake

Construction of a centralized repository that allows you to store all your structured and unstructured data at any scale and without the need for prior transformation.

Data Lakehouse

Combine the storage power of a data lake with the transactional capacity of a data warehouse, and you get a modern hybrid tool to support BI, AI, and ML.

Data Quality

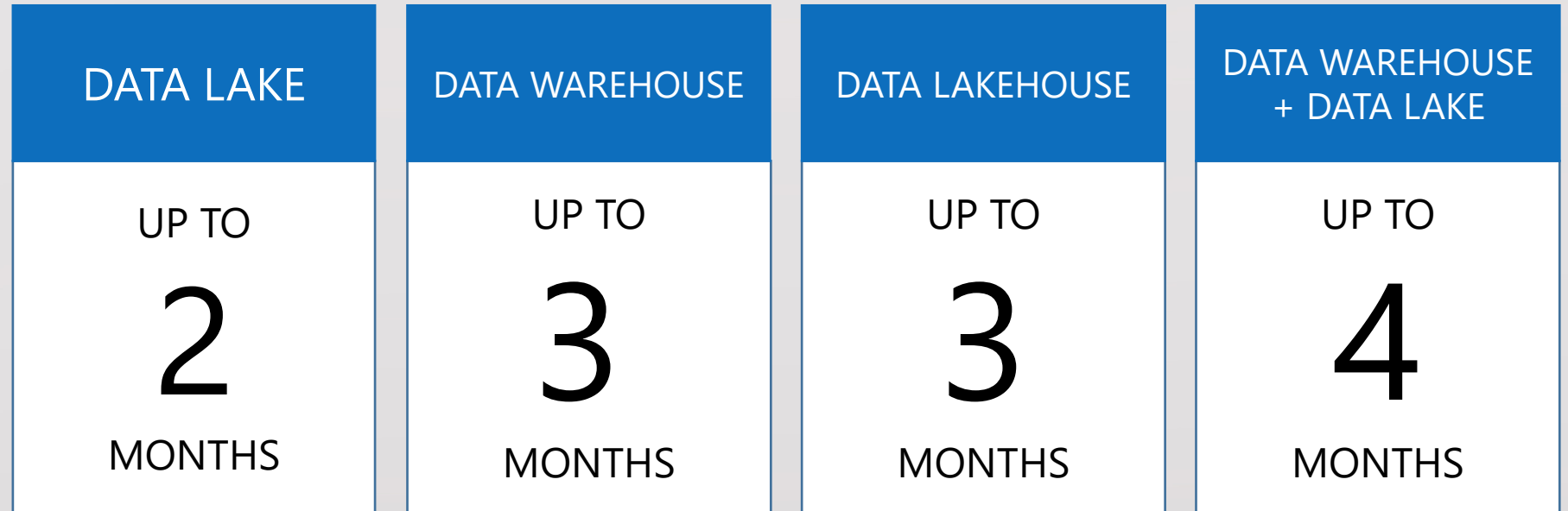
Ensure the persistence of clean data in your central repository by providing reliable decision-making support across all spheres of business based on uniform and complete information.

Data Success

Monitoring the success and evolution of data integration, providing visibility of progress, identification of opportunities and strategies for data democratization and accelerating journey to become data-driven.

Your strategy can't wait for extensive initiatives that take time to deliver metrics...

Short, lean projects that deliver





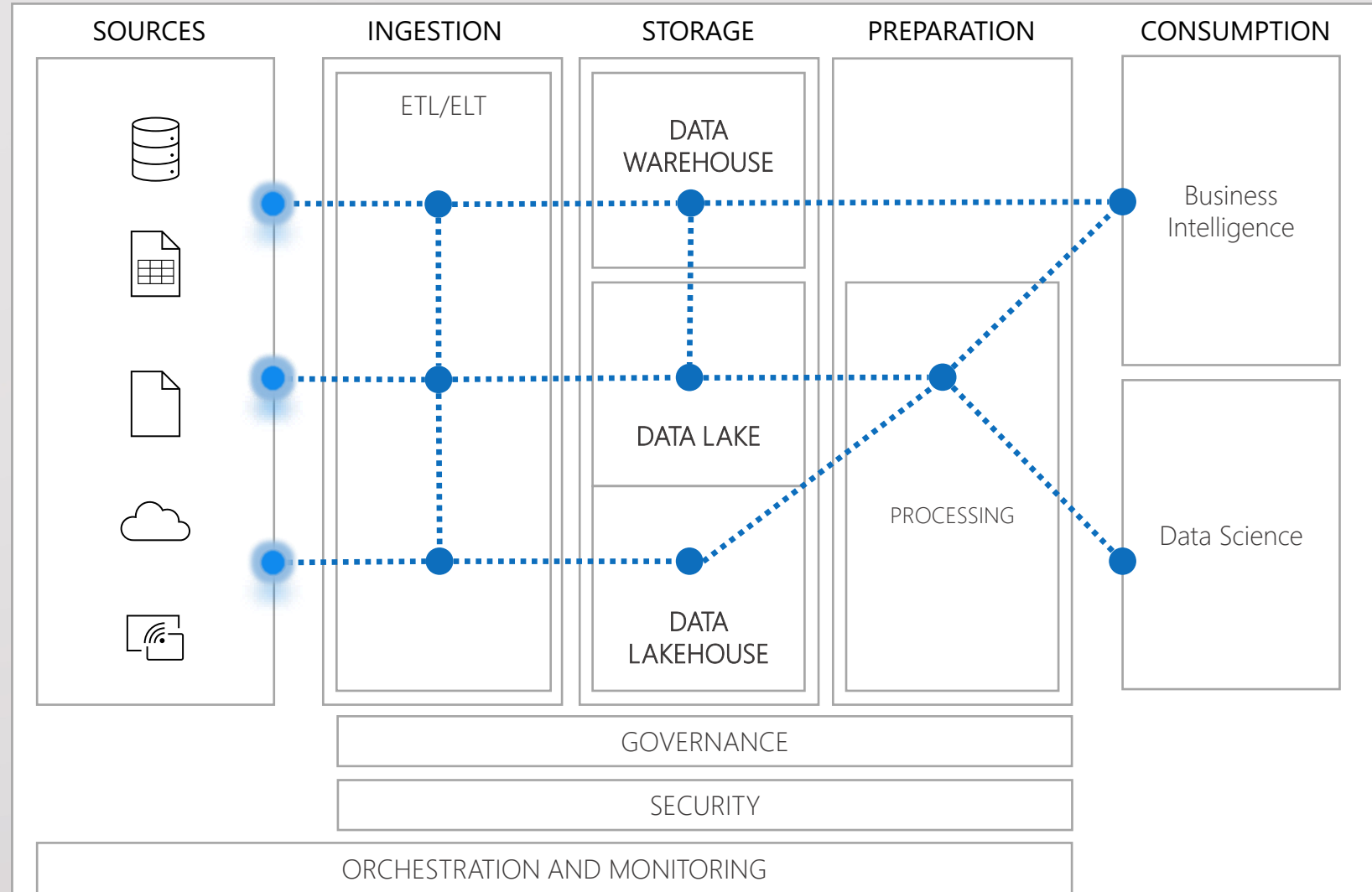
Harness the [full potential](#) of the [Azure cloud](#), and surprise your decision makers with the [high availability](#), flexibility, and efficiency of a specialized [data platform](#).



Simplified, flexible, data scale-ready architecture

INTEGRATION ARCHITECTURE

- Optimized integration
- Reuse and consistency
- Elasticity and performance
- Governance, security, and monitoring



Security and total availability of your data with the use of the best technologies.

INTEGRATION & TRANSFORMATION



Azure Databricks



Azure SQL Polybase



Azure Data Factory



Azure Data Share

BIG DATA & DW



Azure Data Lake Gen II



Azure Data Explorer



Azure Synapse



Azure HDInsights

DATA OPTIMIZATION



Azure SQL Elastic Pool



Azure Data Quality Service



Azure Storage Replication

SUPPORT SERVICES



Azure Monitor



Azure Key Vault



Azure Security Center



Azure Sentinel



Azure Blueprint



Azure ARM Templates



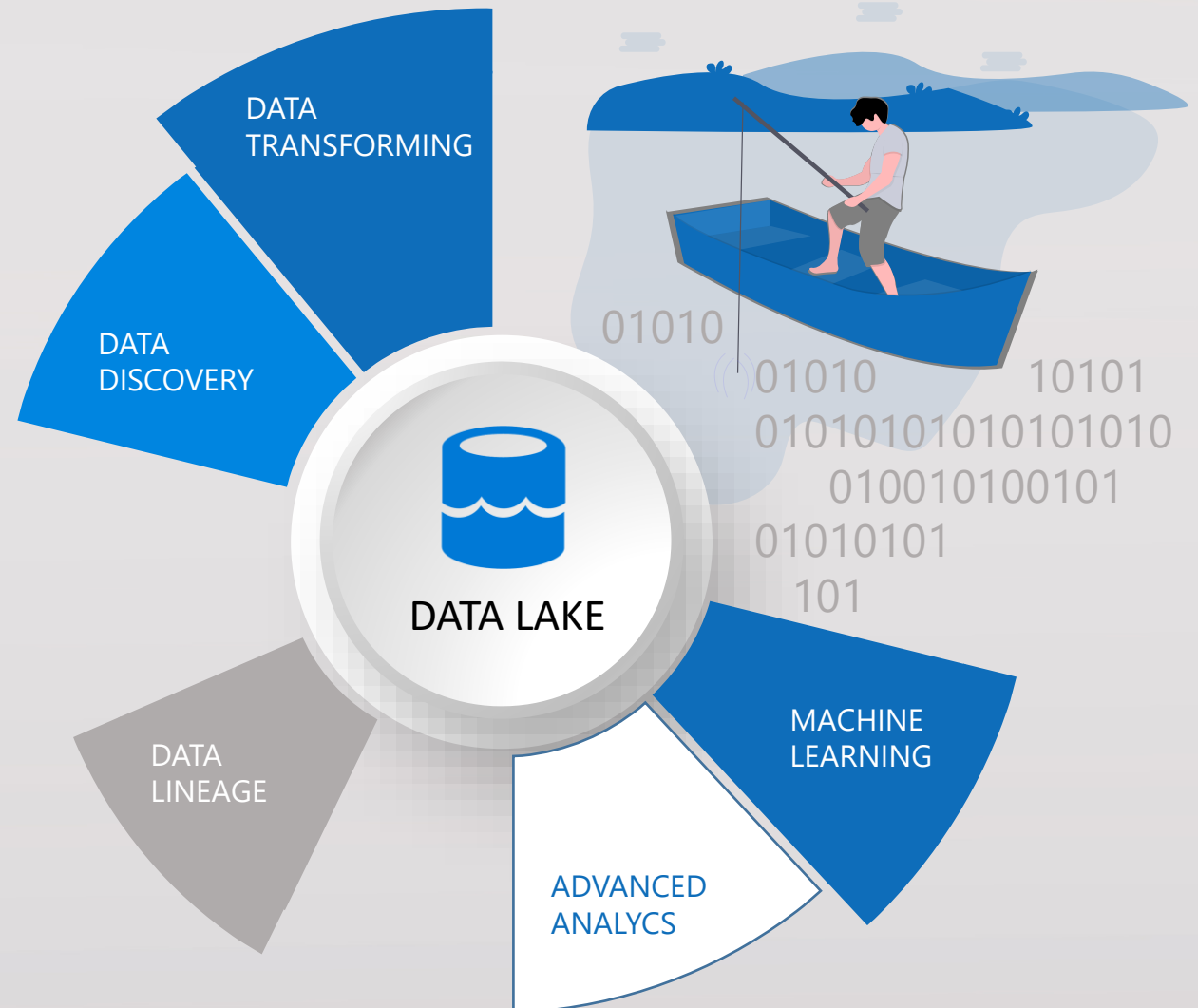
Azure Info Protection

Azure
Cloud
Services

Create an **economic** and robust repository for **any type** of data.

MODERN DATA LAKE

- Scalability for petabytes and beyond
- Optimization for cloud analytics tools
- Integration with big data analytics
- High availability and disaster recovery
- Access control, encryption, and network level
- Cost savings with self-sized storage.



Deliver a unified vision for standalone business area consumption



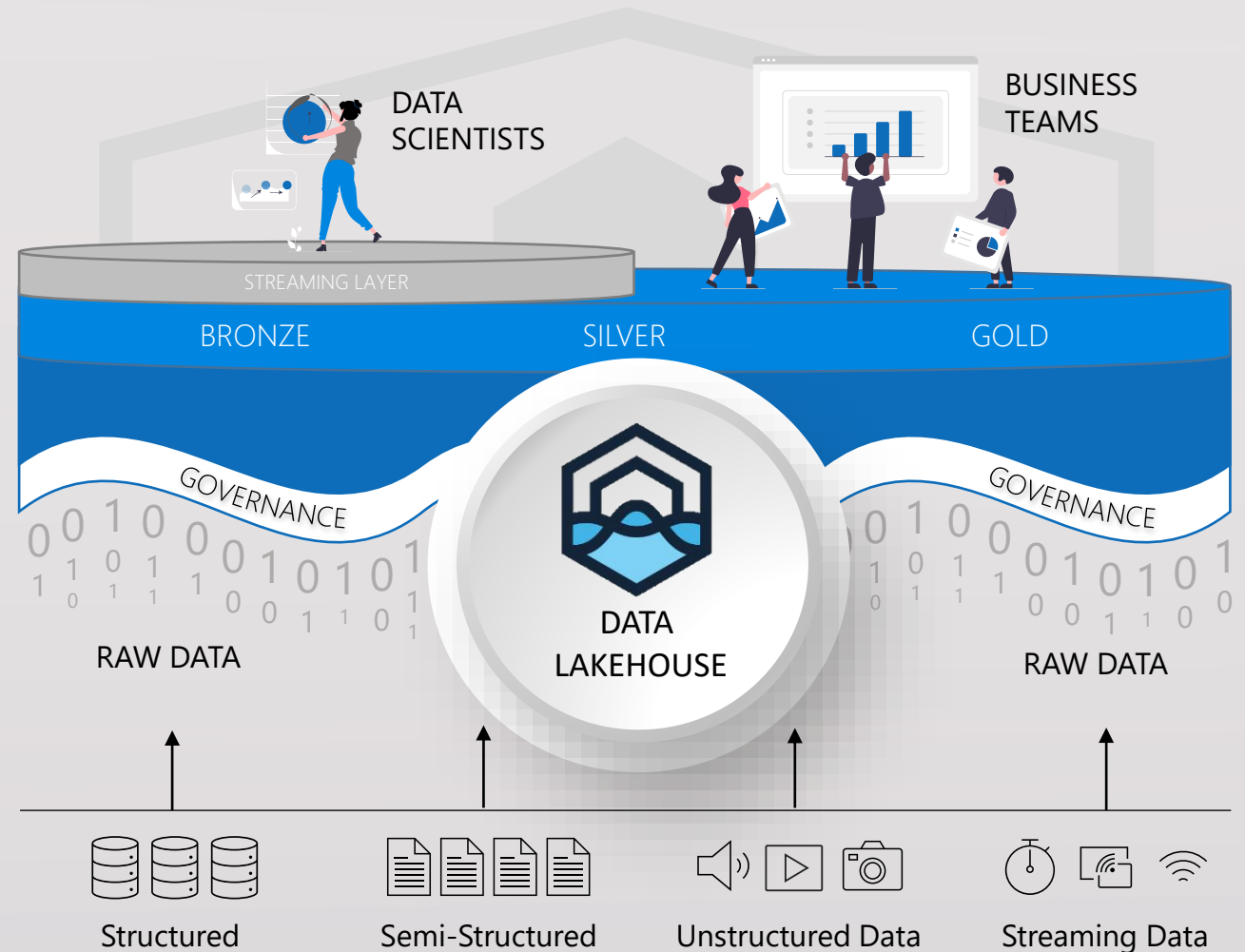
DATA WAREHOUSING

- StarSchema or Snowflake architecture;
- Apache Spark and SQL deeply integrated
- Support for T-SQL, KQL, Python, Scala, Spark SQL, and .NET languages
- Historical basis analysis, logging, and telemetry

All the power of a data warehouse and a data lake added to a full data lakehouse

DATA LAKEHOUSE

- Enable ACID transactions
- Get direct access to source data
- More storage and management savings
- Reduce data movement and redundancy



Collect data from a variety of sources with the maximum possible efficiency.

DATA INGESTION

- Multiple ETL No Code interfaces
- Uniform structuring
- Synchronization, coercion and automated correction
- Additional quality features
- Interrupt monitoring and control capabilities

DATABASES

SPREADSHEETS

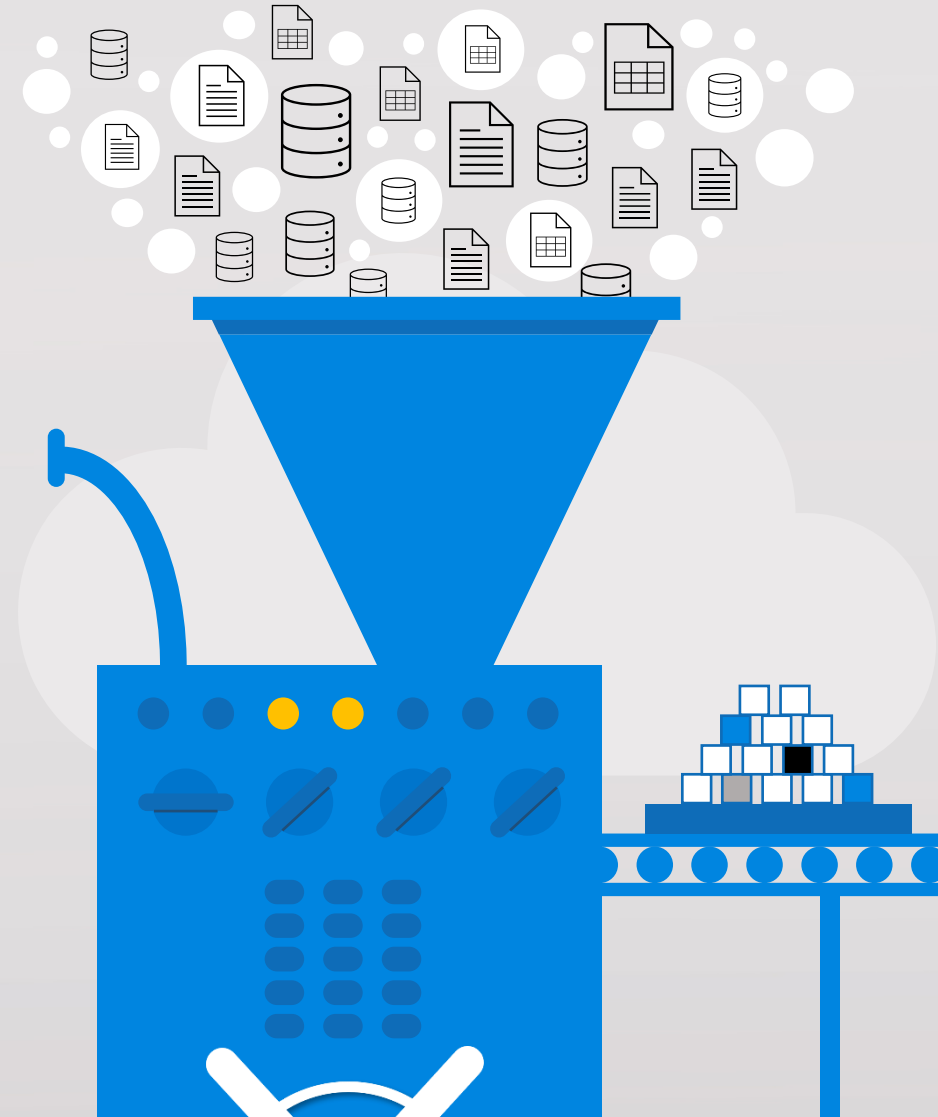
XML FILES

JSON FILES

ERP, CRM...

EDI FILES

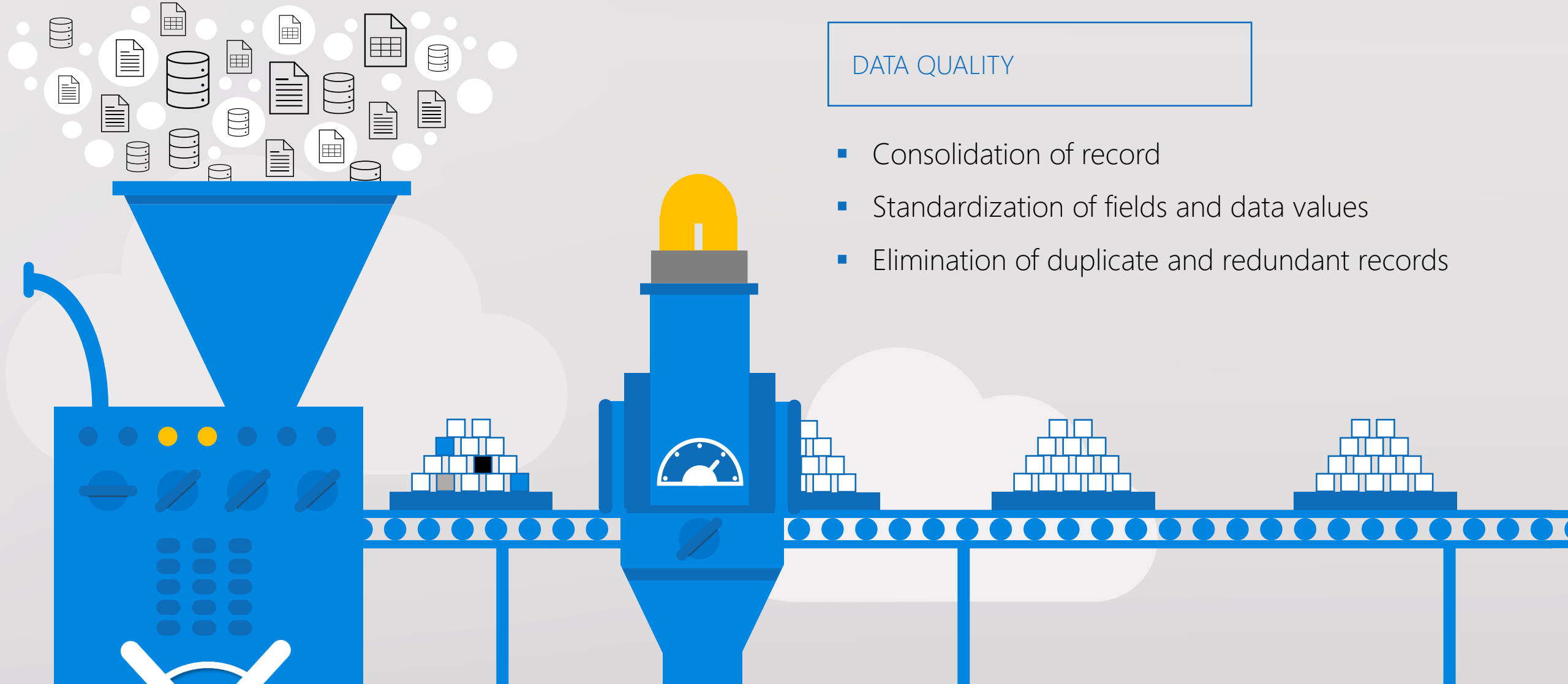
WEB LOGS/HTML



Ensure data **quality** and eliminate **risks** of inconsistencies in your insights

DATA QUALITY

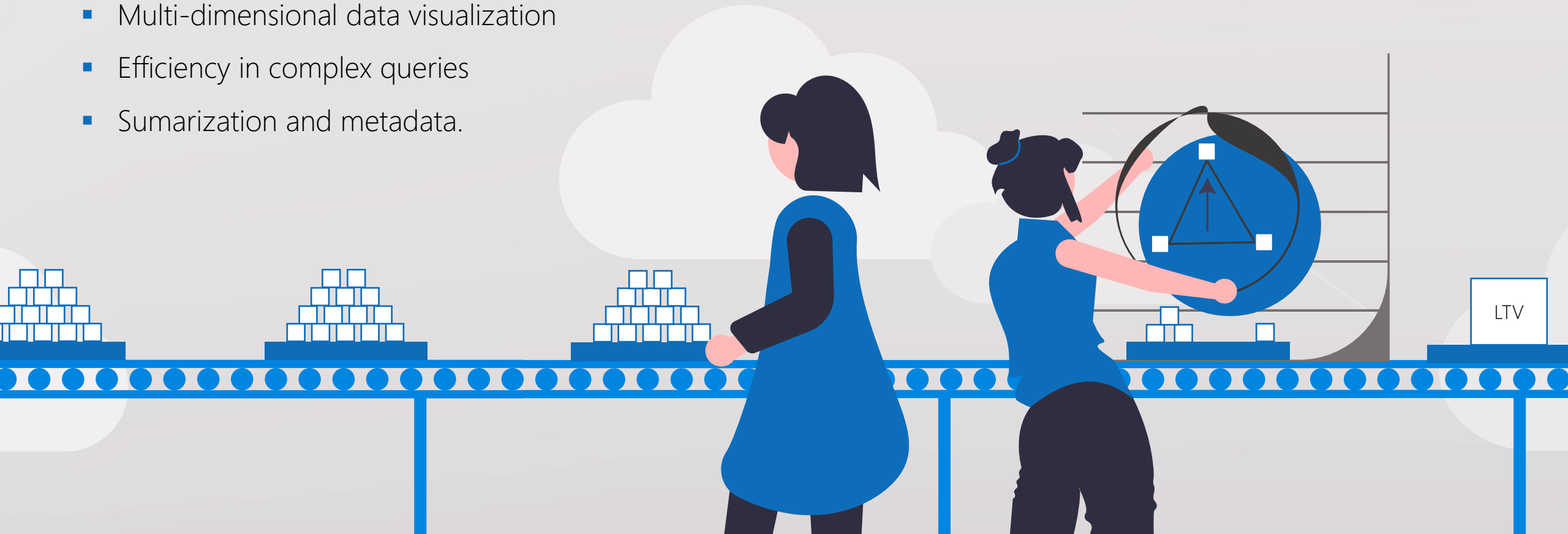
- Consolidation of record
- Standardization of fields and data values
- Elimination of duplicate and redundant records



Visualize all **relationships** between data to **use** it with extreme ease

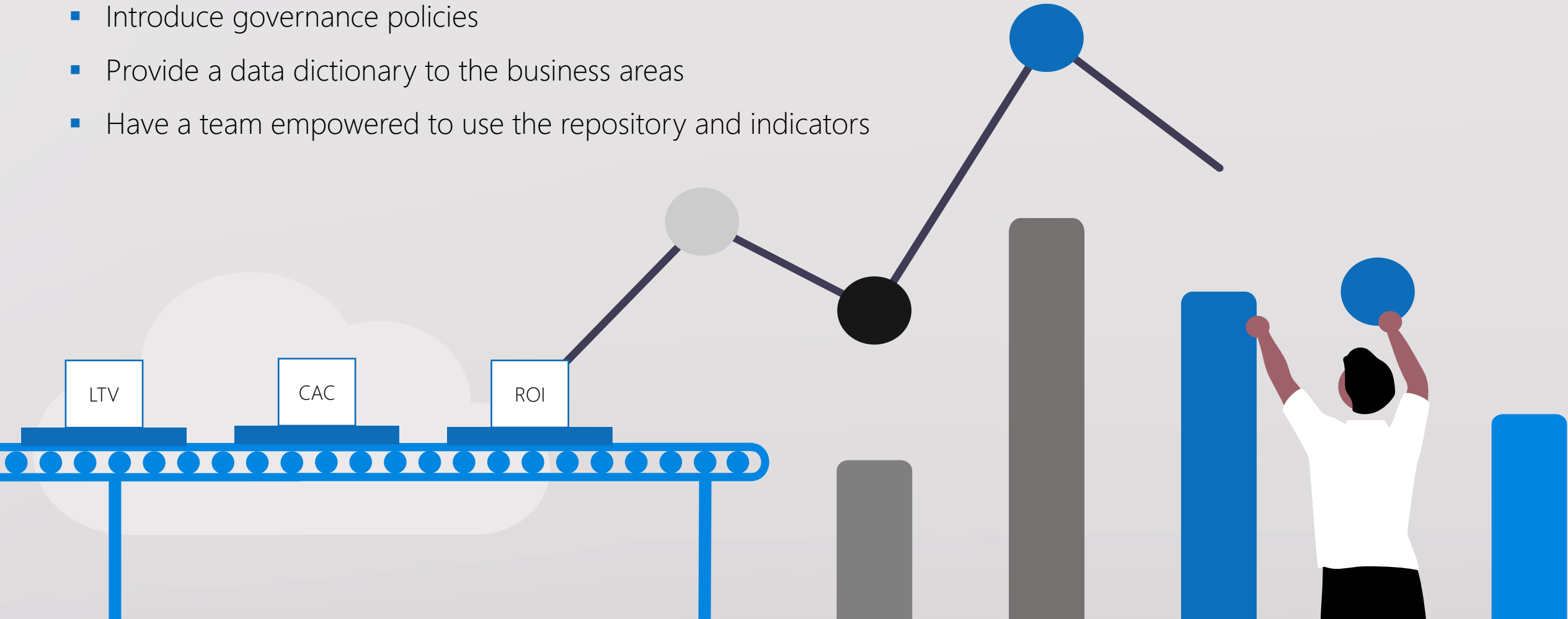
DATA MODELING

- Multi-dimensional data visualization
- Efficiency in complex queries
- Sumarization and metadata.



Empower your employees with the use of ready-to-use indicators.

- Control the security of your repository
- Introduce governance policies
- Provide a data dictionary to the business areas
- Have a team empowered to use the repository and indicators



We are **passionate** about the **success** of your business.

DATA SUCCESS

- Monitoring of success
- Monitoring and reporting of metrics
- Collection of internal feedback
- Periodic reports post-delivery
- Recommendations and evolution plans

Standardized and complete offerings, with the quality your business deserves.

Implementation Plan

- ✓ Project plan
- ✓ Source diagram
- ✓ Current and future architecture
- ✓ Non-functional requirements
- ✓ Execution plan

Data Repository

- ✓ Data lake
- ✓ Data warehouse
- ✓ Data lakehouse
- ✓ Data lake + data warehouse

Code Repository

- ✓ Code repository
- ✓ Documentation of tools
- ✓ Versioning of pipelines

User Guide

- ✓ User and administrator manual
- ✓ Characteristics of the solution
- ✓ Access policies

All built in an **iterative**, collaborative, and **validated** way, within each stage of the service

Weekly Status Report

- ✓ Activities completed
- ✓ Upcoming activities
- ✓ Monitoring progress
- ✓ Team feedback
- ✓ Project news;

Data Pipelines

- ✓ Data connectors
- ✓ Pipelines in Batch
- ✓ Pipelines in Low Code
- ✓ Pipeline Monitoring Interface;

Indicators List

- ✓ List of indicators modeled for consumption
- ✓ Gold layer for business data

Success Report

- ✓ Feedback statement
- ✓ Result metrics
- ✓ Suggestions for improvement
- ✓ Latest news
- ✓ Evolution plans

For over **20 years**, we've consulted with companies to discover the **best technology solutions**.

Microsoft Partner



Gold Data Analytics
Gold Data Platform
Gold Cloud Platform
Gold Cloud Productivity
Gold Application Integration



Programmers[®]
Beyond IT



We accelerate
great **ideas** with
technology and
innovation!