

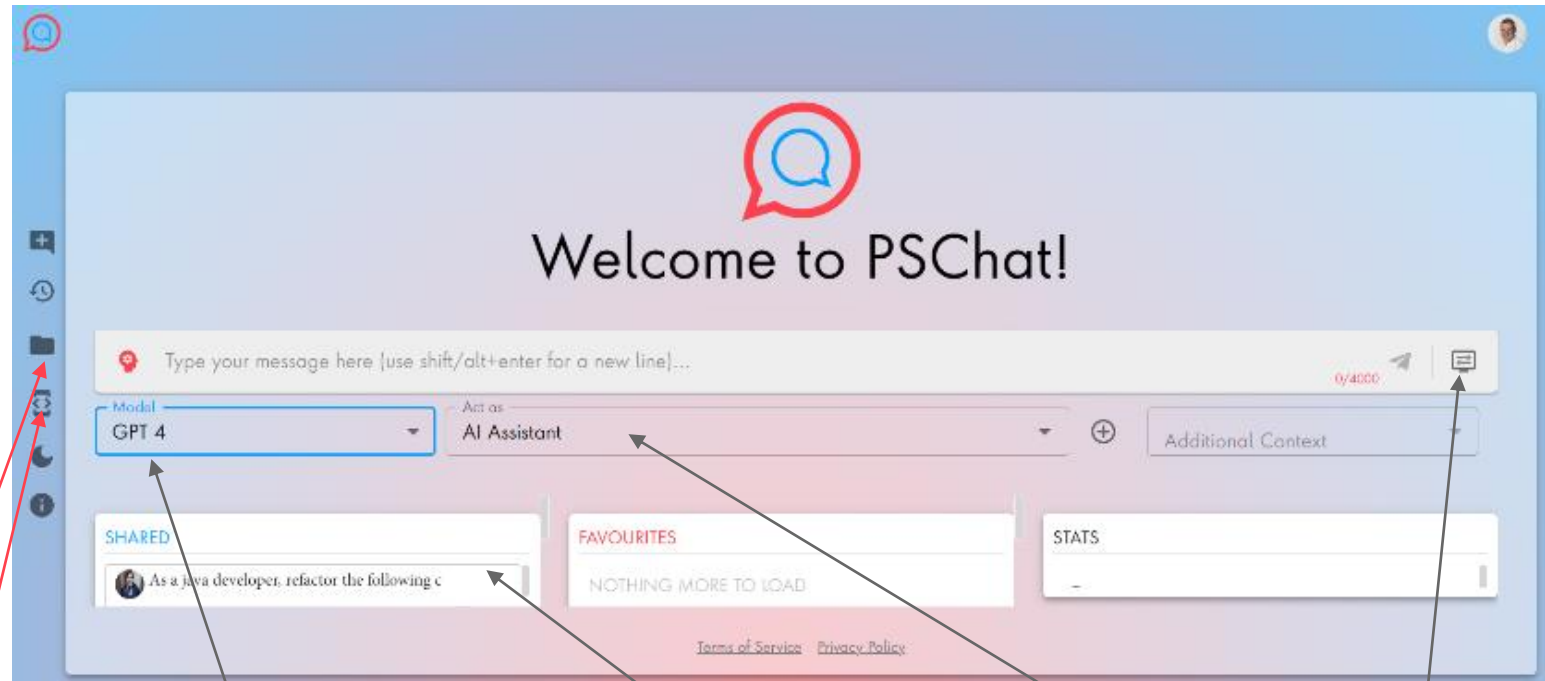
PS Chat: Enterprise AI Assistant & ChatGPT

publicis
sapient



PS Chat was one of the first private tenant implementations of chat on Azure

- Secure & private gen-AI implementation
- Hosted on Azure
- Allows colleagues to use generative AI tools without fear of leaking data or being hacked
- Easy to monitor usage and cost controls
- Chat today; developer environment tomorrow

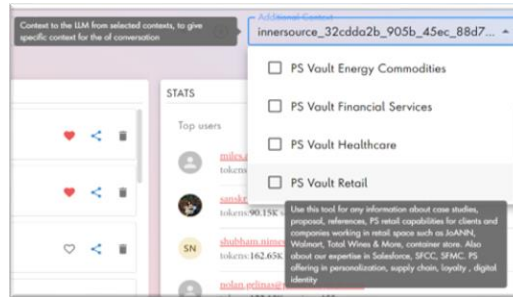


Choice of pretrained models Built in collaboration tools Number of specialist roles Configurable settings

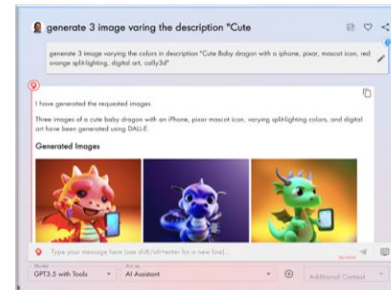
Generate API Keys

File & image storage

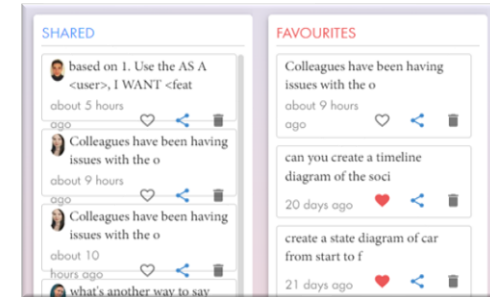
PS Chat provides Enterprise Grade Features



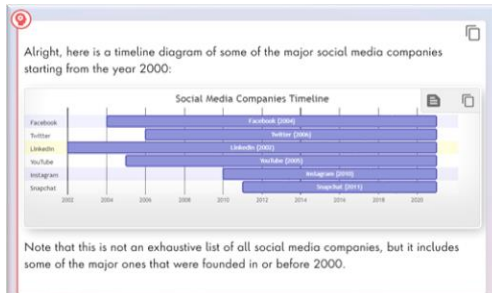
ENTERPRISE CONTEXT



PLUGINS AND TOOLS

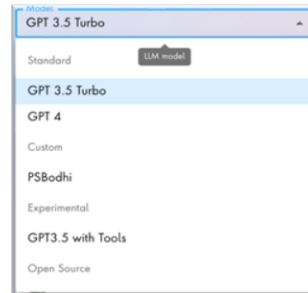


COLLABORATION



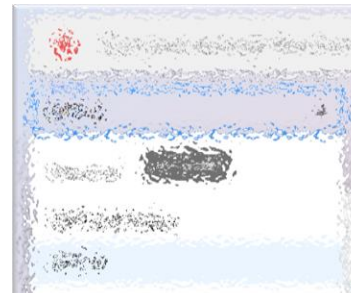
MULTI MODAL

Images, Diagrams, Code Notebooks, Mini Apps, Widgets



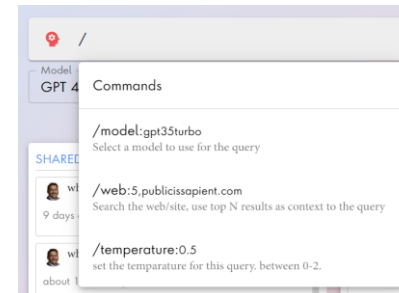
MULTI MODEL

Access to various models across vendors

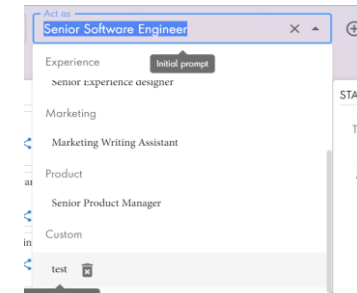


DATA PRIVACY

Enterprise / Tenant Data boundaries
Data masking



CUSTOM CONTEXTS / COMMANDS



CUSTOM WORKFLOWS VIA AGENTS