



# An Enterprise Multi-Agent Orchestration & Automation Platform

· Design · Orchestrate · Automate

## GUI-based No-Code Platform for Enterprise Agent Development & Deployment



## Supported Integrations & Differentiated Features



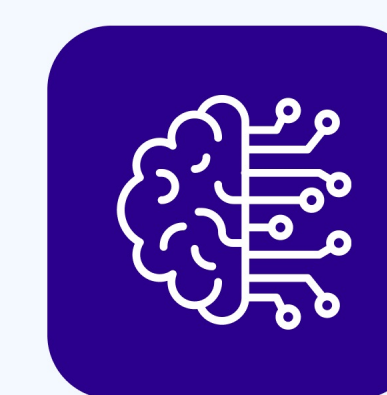
### Task Decomposition & Intelligent Routing

Automatically splits complex tasks and routes them to the best-suited agents—enabling faster execution and efficient multi-agent coordination.



### Cross-Agent Collaboration

Agents communicate and share memory in real time—solving problems collectively without hardcoded dependencies or manual coordination.



### Memory Graph Visualization

Persistent, interactive memory graph that tracks entities and timelines—maintaining context across sessions for personalized, long-term agent reasoning.



### Composable Agent Tools

Turn any workflow component into a reusable tool with dynamic discovery—enabling modular, scalable, and faster agent-based development.



### MCP Tool Integration

Connect securely to 50+ tools using native Model Control Protocol—ensuring governed access, auditability, and enterprise-grade compliance.



### Self-Improving Agent Framework

Agents optimize through continuous feedback and evaluation—improving over time with zero manual tuning.

## Flexible Deployment Options

QpiAI Pro supports enterprise on-premise, hybrid public clouds - bring your own cloud, and managed SaaS deployments.



## Key Product Highlights

### ✦ Multi-Agent Orchestration Platform

Coordinate specialized agents with intelligent routing and seamless collaboration.

### ✦ Unified No Code GUI

Design agent workflows with drag-and-drop—no coding required.

### ✦ Centralized Knowledge Discovery

Connect data sources with autonomous processing for informed agents.

### ✦ Contextual Intelligence

Persistent memory enables pattern recognition and personalized experiences.

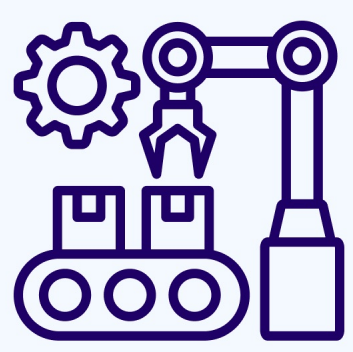
### ✦ Enterprise Security & Compliance

Granular permissions and audit trails ensure automated policy enforcement.

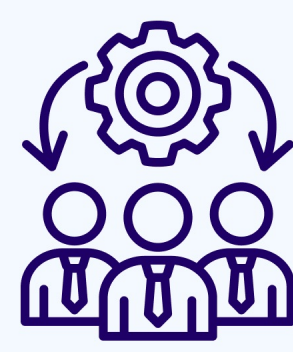
### ✦ Self-Improving Agents

Automatically optimize performance through analysis—evolving capabilities without intervention.

## Industry Verticals



Manufacturing  
& Industry 4.0



Enterprise Operations



Healthcare



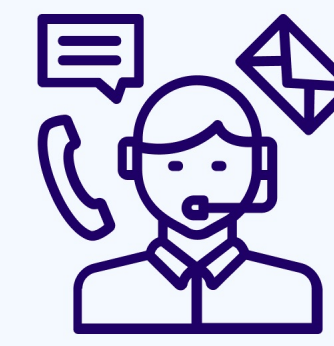
Supply Chain



Sales &  
Marketing Ops



Financial Services



Customer Service



Legal Services

## Awards & Recognitions

ISO 9001: 2015 Certified | ISO/IEC 27001: 2013 Certified



Future AI Pioneer at the  
Asia Pacific  
Conference of German  
Business - APK 2024



NASSCOM AI Game  
Changer of the Year  
2024



Mint DigitalInnovation  
Summit 2023 Winner  
for the AI category



NASSCOM Enterprise  
Product of the Year  
Award 2021

## About the Company

QpiAI is a deep-tech startup vertically integrating AI and quantum technology to provide the next-generation of extreme modeling, compute, and automation. We enable enterprises to maximize the first-mover advantage in quantum & AI adoption by providing value-based solutions today and a roadmap for seamless technology transition in the future.



### Connect with Us

+91 9035069453 | sales@qpiai.tech

**QpiAI India Pvt Ltd.**

Mezzanine Floor, Hub 1 SEZ Tower Karle Town Centre,  
Karle Infra Special Economic Zone, Nagavara, Bengaluru, Karnataka  
560045