



Quadrant AI Capabilities



15+
Years of Industry
Experience

100%
Managed Services

10+
Countries

3000+
Professionals

1000+
Projects

24/7
Project and Support Services



Awards & Recognitions

- #5 in Best Technology Companies to Work For in Redmond, WA
- Ranked #59 on Deloitte's Technology Fast 500 North America in 2020
- Consecutive 3 times into Deloitte's Fast 500 list
- Ranked #67 by Inc 5000 as the fastest-growing company in America, 2021
- Ranked #16 on Zippia as one of the top 20 companies to work in 2019
- Ranked #25 by Inc 5000 in Top software companies' category across the USA in 2019

Our Locations



Our Clients

Hi -Tech



BFSI



Retail



Health Care



Aviation



Others



Our Service Offerings



Cloud Operations

- Design and Development of Cloud Native Services
- Cloud Migrations
- Cloud Observability
- Design and Implementation of monitoring services
- Cloud Security Implementation
- BOTs



Application Development

- Application development and support
- Mobile application development and support
- Content management systems
- Accessibility
- UI/UX development



IOT

- Data Collection and Processing
- IoT Application Development
- Device Connectivity and Management
- Security and Privacy
- Azure IoT Hub



Dev Ops

- 24*7 Support with In-depth Technical Support
- Site Reliability Engineering
- Automation and Scripting
- CI/ CD Implementation.
- Buildouts



Power Platform

- Power BI
- Power Apps
- Power Automate
- Microsoft CoPilot Studio



AI & ML

- Generative AI / LLMs
- Computer Vison (OCR)
- Imaging (Image & Video)
- Speech to Text & Text to Speech
- Prompt Engineering
- AI Model Assessment
- Cloud based AI Solutions (MLOps)



Infra Managed Services

- End User Computing Services
- Infrastructure Maintenance
- Data Centre Management
- Enterprise Systems Management
- Converged Network
- Service Desk and Management
- Application Management
- Managed Security



Data and Analytics

- Data Migration
- Data Analytics tools
- Telemetry Data Curation
- DWH Architecture
- Data Pipeline Development
- Building Analytical Data Models
- Data Visualization tools
- Data Mining



Cybersecurity

- Network Security
- Data Encryption
- Threat Detection and Monitoring
- Vulnerability Management
- Compliance and Governance
- Incident Response and Recovery

■ Quadrant –Presence in Microsoft

- Azure Data** (Arun Ulagaratchagan) ● COSMOS DB, ORCAS DB/Magnet, R&D Data-SQL, SQL DB, HD Infra Core, Data Map, R&D-SQL, R&D-SQL DW, SQL Telemetry, SQL Synapse
- Search & Distribution** (Jordi Ribas) ● Bing
- Industry Cloud** (Sathish Thomas) ● C+AI
- Cloud Ops & Innovation** (Noelle Walsh-Elwell) ● Cloud Operation & Innovation Services
- Biz Apps and Platform** (Charles Lammana) ● Dataverse
- AHIS_Management_COGS_1010** (Rani Borkar) ● CHIE - COGS Engineering
- CELA** (Dev Stahlkopf, Shelley McKinley) ● CELA (IPG Patent Engineering), AI
- GDC** (Stephanie Ferguson) ● Project Management - Marketing
- Stores DS&S Strategy & Ops** (David Porter) ● Data Analyst
- Customer Service & Support (CSS)** (Mala Anand) ● Support Engineers
- Azure Core** (Girish Bablani) ● Singularity
- Security Platform** (Rohan Kumar) ● Azure Purview and Next Generation
- Prof & Perf Plat SWE R&D 1010** (Douglas Phillips) ● Cloud ES



Quadrant – AI Capabilities

AI specialization

GenAI

Generative AI / LLMS



Computer Vison (OCR)



Imaging (Image & Video)



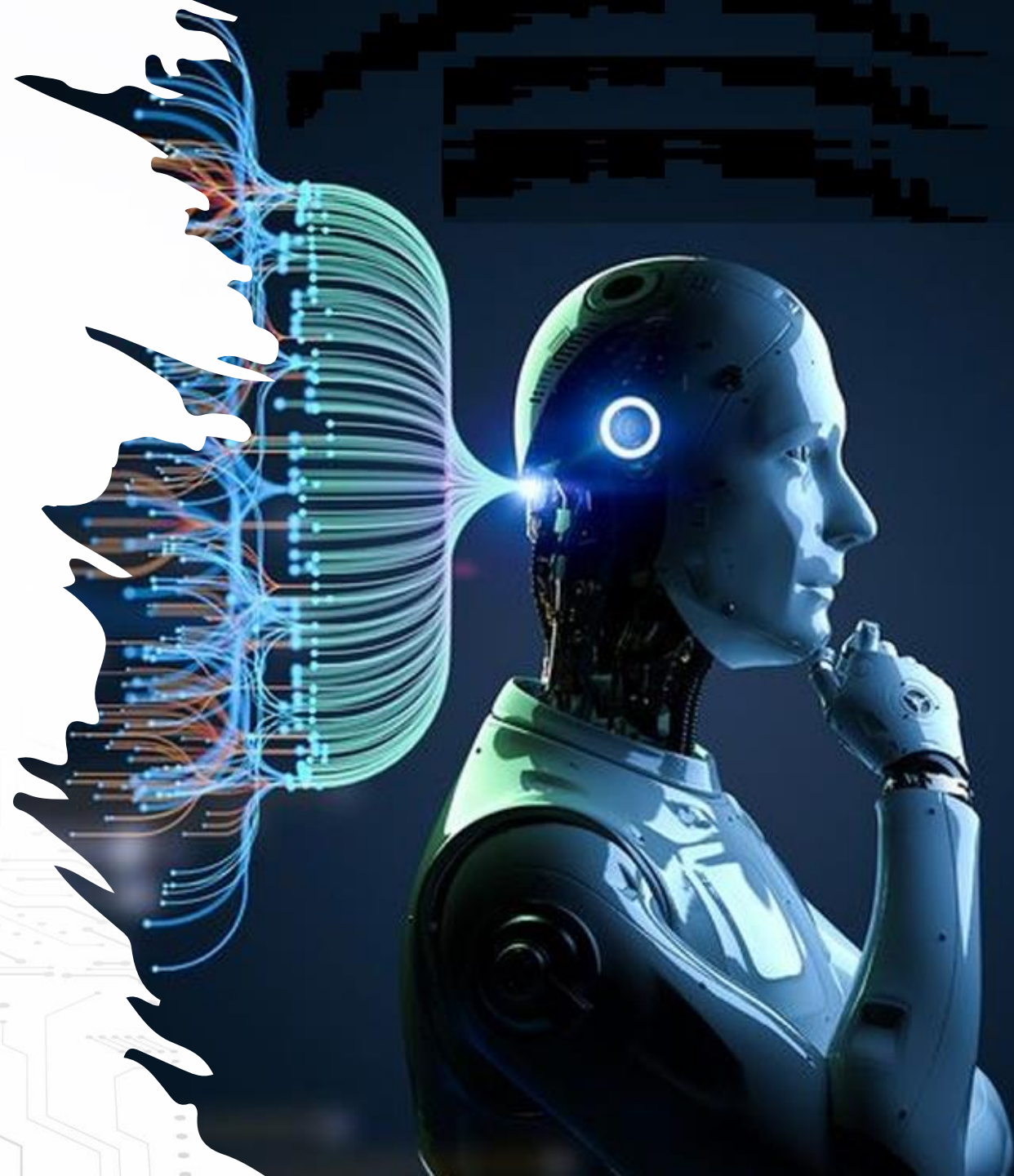
Speech to Text & Text to Speech

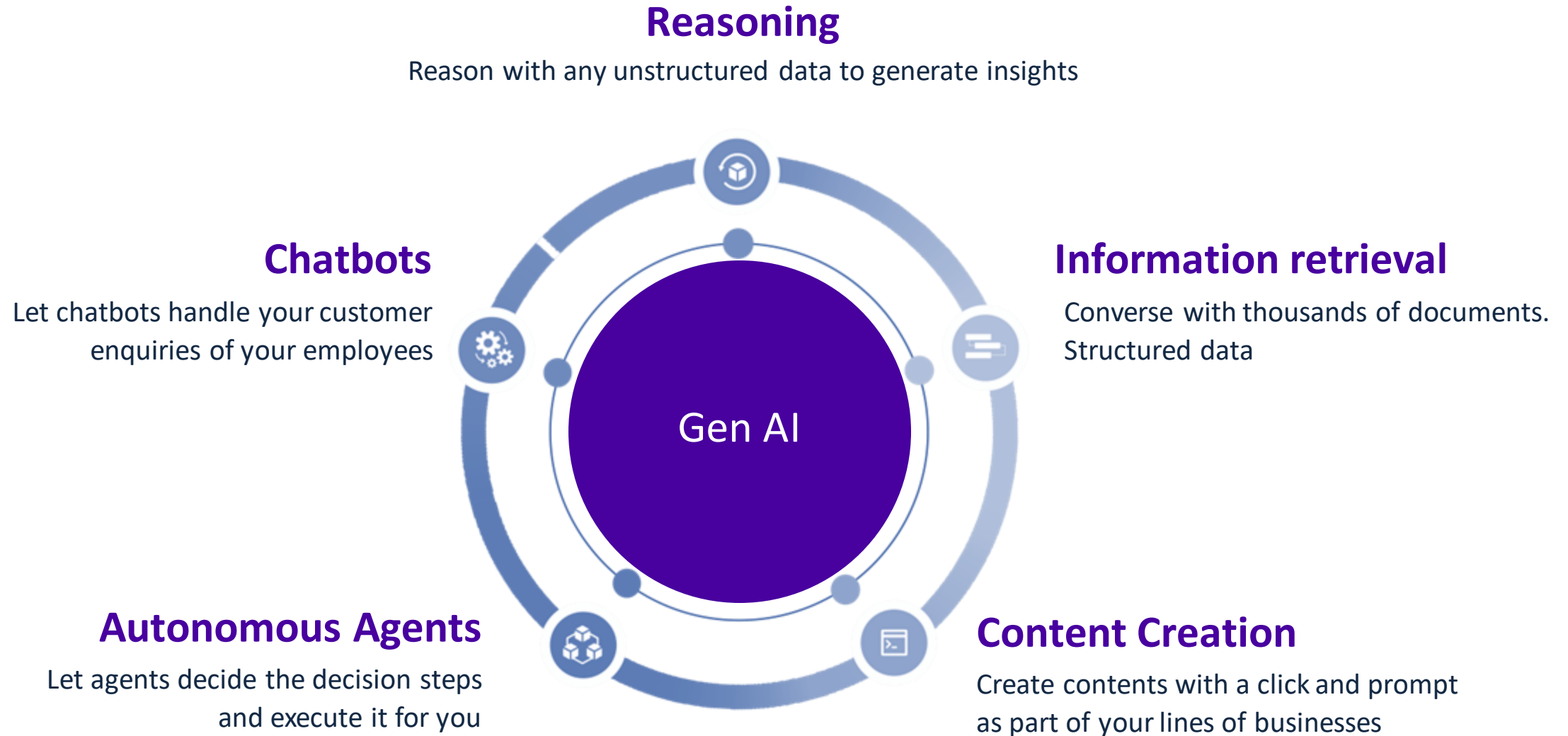


Cloud based AI Solutions (MLOps)



AI Model Assesment & Prompt Engineering





Quadrant's - Gen AI Layers

Modules that are instantly available to put together to create any innovative Gen AI solutions

Front-end

Monitoring Dashboards

Real-time analytics platforms that provide insights into model performance, usage, and health, facilitating informed decision-making.

Chatbots

Automated conversational agents that handle user queries or tasks, powered by LLMs to provide natural, efficient interactions.

Intelligent Search

Advanced search algorithms powered by AI, offering contextual and semantic understanding to retrieve highly relevant results.

Autonomous workflows

Self-managing processes that leverage AI to automate decision-making and task execution, enhancing operational efficiency.

Middle-end

Prompt Libraries

Curated sets of queries or commands designed to guide Large Language Models in generating specific, targeted outputs.

Vector Databases

Specialized storage systems for high-dimensional vectors, enabling fast retrieval and similarity checks to enhance model performance.

Auto fine-tuning

Automated processes for adapting pre-trained models to specific tasks, improving accuracy and reducing time-to-value.

Agent creation

Deploy intelligent agents, often driven by LLMs, to automate specific tasks or interactions within enterprise systems.

Back-end

Foundation Models

Core algorithms trained on extensive datasets for generalized tasks.

Document Parsers

Specialized models for understanding the structure and layout of documents.

Multi-Modal models

These models are capable of processing and integrating multiple types of data to perform more complex tasks.

LLM Apps & Ops

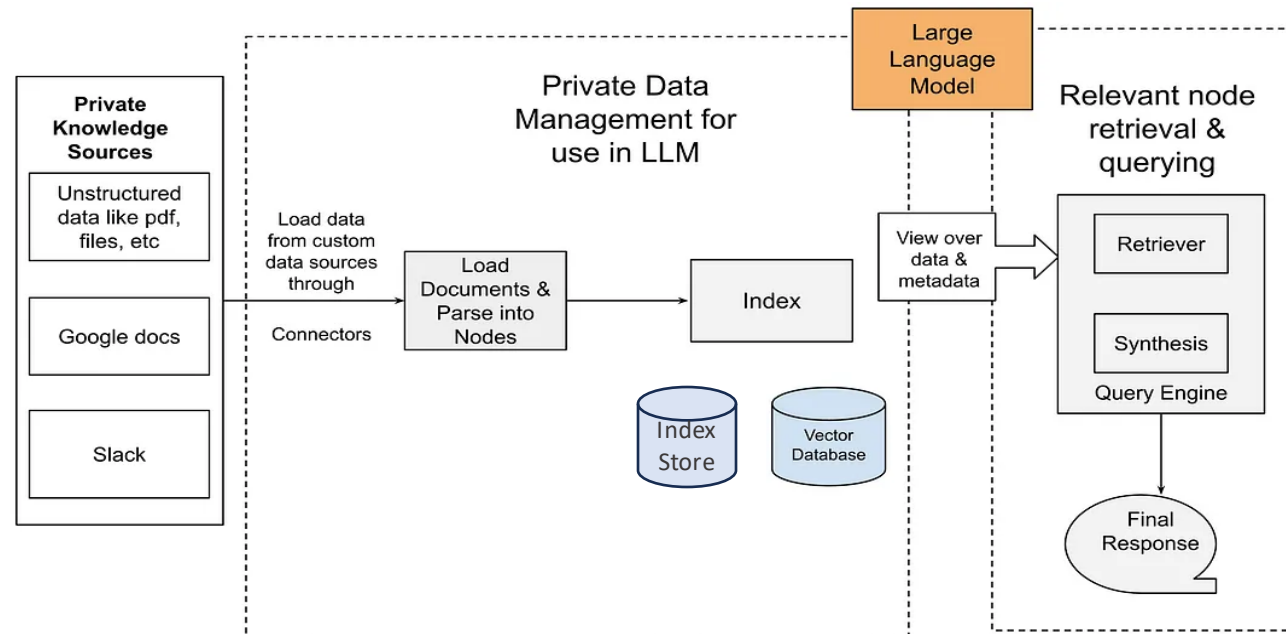
Centralizes the deployment and operational management of Large Language Models across enterprise workflows.

Quadrant using Generative AI to solve Operations Challenges



Quadrant leverages generative AI and LLMs (Language Model Models) to efficiently solve IT operations problems. Quadrant enables intelligent automation, proactive monitoring, and effective decision-making for streamlined IT operations management.

- Contextual Relevance
- Efficient Storage and Retrieval
- Scalability
- Compliance with Privacy Regulations
- Privacy Preservation





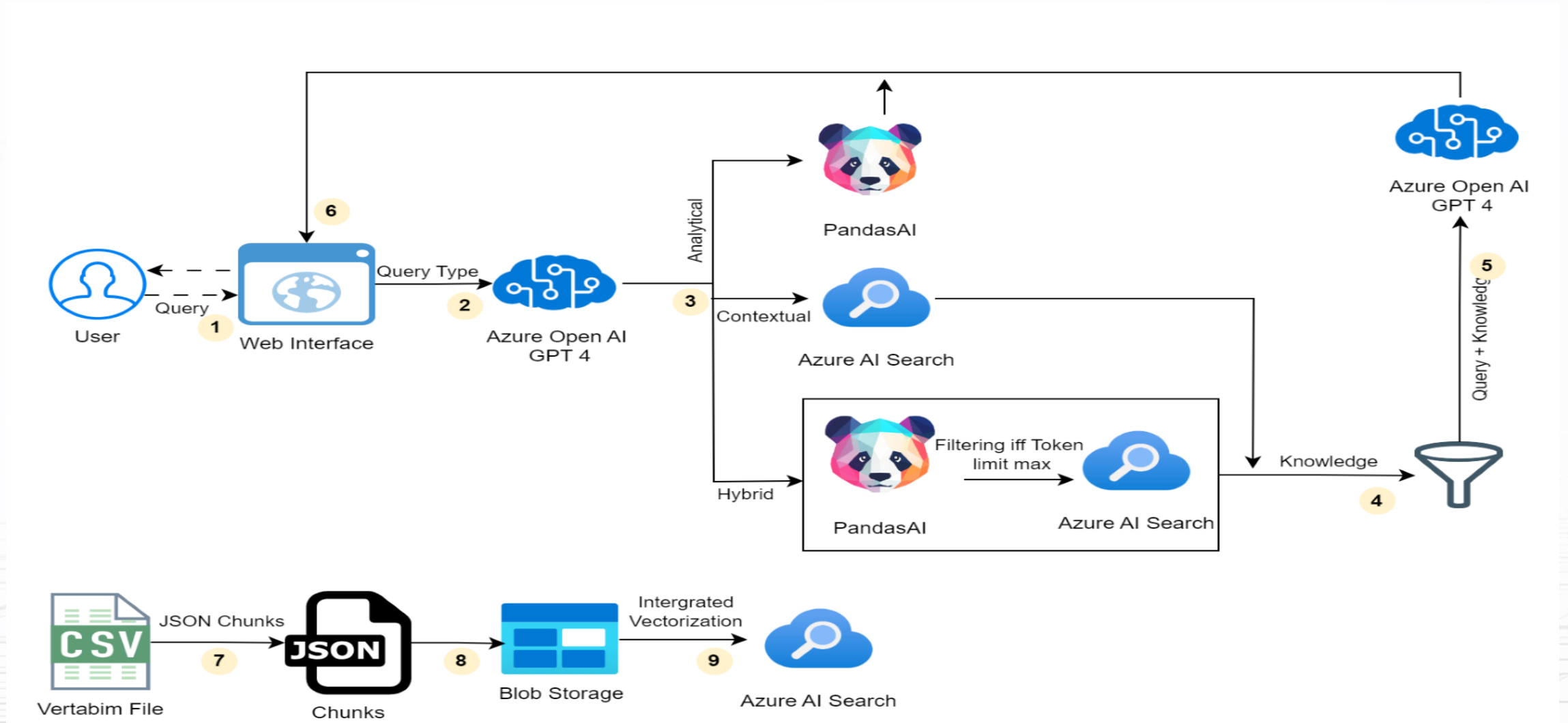
Use Case: Customer have raw survey data which consists of feedback on Azure products/services in comparison with its competitors. Currently this data is analyzed with manual classification. This is a time consuming and effort intensive and error prone. Customer wanted to automate this process with Azure AI Services and wanted to get query base inferences.

Solution: Quadrant build a DB Copilot with stack of RAG approach and multi agent approach. Quadrant used AzureAISearch and AzureOpenAI services. Solution separated qualitative and quantitative data and applied different approaches and enhance the response quality. Solution has a user-friendly UI to upload the survey data and customer has interface to prompt and get the data inferences.

Benefits:

- **80% analysis efforts saved**
- **90% faster reports**
- **No additional logic or efforts required for new data format.**

DB Copilot Architecture



Use Case – Improving CosmosDB BoT by NLP



Use Case: CosmosDB Operations team has TSG's for the ICM resolutions. As team is not effectively utilizing them as its time taken to search in documents. Quadrant to index TSG's using LLM's to improve the BoT so that user can prompt and get required resolutions.

Phase 1 (POC):

- Picked ~5 TSGs which are related.
- Indexed TSG's using different LLM models from OpenAI / Huggingface
- Compared the prompt response results and identified the right LLM model.
- Fixed anomalies, if TSG's need some structuring, and re-indexed them for desired results.
- Achieved 80% accuracy of responses.

Phase 2 (Implementation):

- Implement in Realtime environment.
- Indexed all CosmosDB TSG's in MS environment using LLM model which is identified in POC stage.
- Enhance current BOT and integrate LLM model to it.
- Test and validate the prompt and responses and deploy.

Azure
Cosmos DB





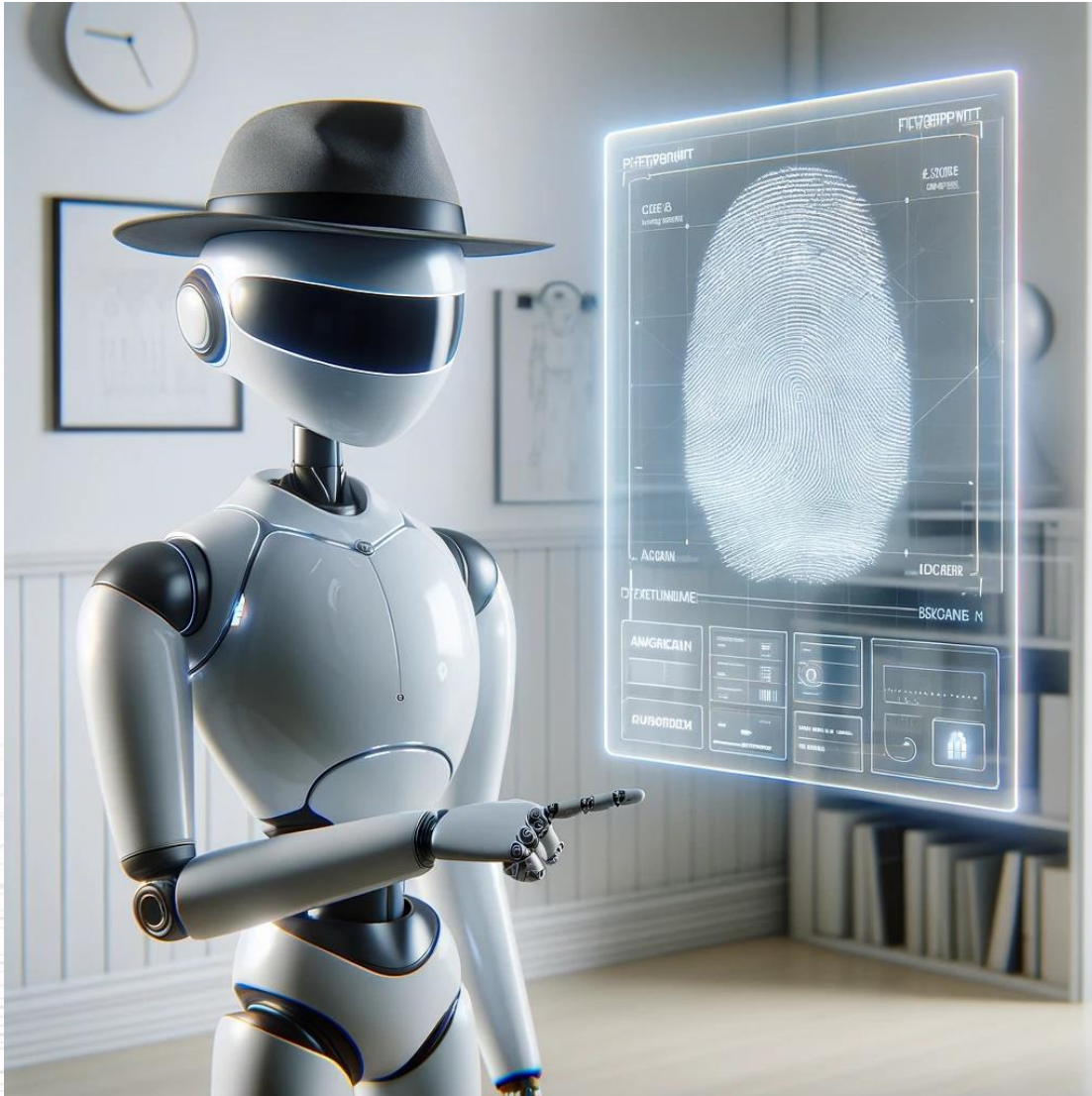
Problem Statement: Manually describing complex database tables is time-consuming and error-prone, hindering efficient data analysis and decision-making. There's a need for an automated solution to generate accurate table descriptions from schemas and table names.

Business Solution: Our solution address the challenges associated with manual table description generation through the implementation of an automated system that utilizes OpenAI's advanced language model, ChatGPT. The system will generate accurate and coherent table descriptions by analyzing the schema, column names, and data contained within the table.

Benefits:

- **Time Efficiency:** Rapid table description generation saves time for data professionals.
- **Consistency:** Automated descriptions ensure uniform and accurate information.
- **Scalability:** Solution adapts to various table structures and business needs.
- **Informed Decisions:** Clear descriptions empower data-driven insights.

Use Case - AI based Chatbot to assist the Narcotics case Investigations



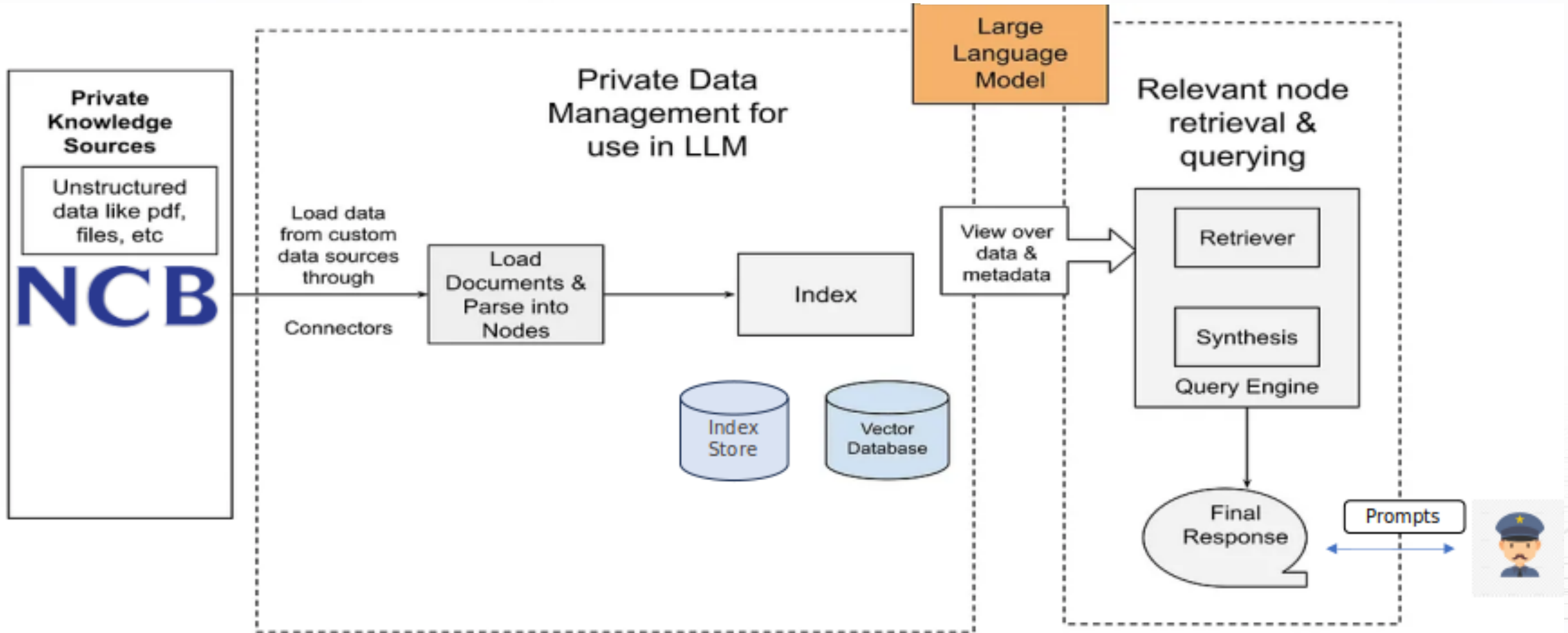
Problem Statement: Hyderabad Police Narcotics department is looking to use GenerativeAI to help their officers build watertight FIRs when investigating Narcotics related offences. The Investigating officers are expected to follow the Policies, Procedures and best practices laid down in the NDPS act and other related documentation available with them.

Business Solution: Quadrant and Microsoft partnered to help build a BOT platform using AzureOpenAI services, which can help answer queries raised by the officers. Quadrant Indexed there publicly available NCB act content and the internal private process content and case content to build the query response model.

Benefits:

- **Quick Access:** Quick access to all procedure information and guides on how to approach the case.
- **Efficiency:** Guide officers to series of actions to be taken on the incident.
- **Access from any ware:** The BOT is accessible over internet
- **Watertight FIR's:** Help officers build watertight FIRs when investigating Narcotics related offences.

Narcotics Architecture



THANK YOU!

Quadrant Technologies

Phone - +1 (425) 296 - 1122

Email - info@quadranttechnologies.com

Website - www.quadranttechnologies.com