

Company Profile



Knowledge, Experience, Professionalism, & Innovation.
PIONEER[®]
IT & Business Consulting

Microsoft[®] Partner

Gold Enterprise Resource Planning

About us

- Founded in 2009.
- Headquartered in Amman – Jordan with offices in KSA, Qatar and Kuwait.
- Winner of the Jordanian ERP Market in 2010 - as one of the best Microsoft ERP implementers.
- Operational in the MENA / GCC Regions.
- Microsoft Gold Certified Partner.



Why Pioneers ?

230% revenue growth for last 3 years



15% revenue growth in 2020



200% Growth in the number of employees in last two years only



Over 90% customer retentions



More than **100+** certified consultant, MBA, CMA, MCPs, industrial engineering's, and software engineers, with over 20 years of experience in ERP



100+ ERP projects implementations



Vertical Solutions



Microsoft Dynamics 365™

- Pharmaceutical Industry - GS1 Standards
- Health Information System (We Care®)
- IVF system - integrated with D365 finance and operation.
- Property Management / Real-estate management (Elite®)
- Payroll System fully localized for MENA / GCC regions (AXALARY®)



Microsoft

- Site Inspection system (Mobile App + Web Interface)
- Online Appointments Booking system
- Visitors Management system
- Online Portals and e-services



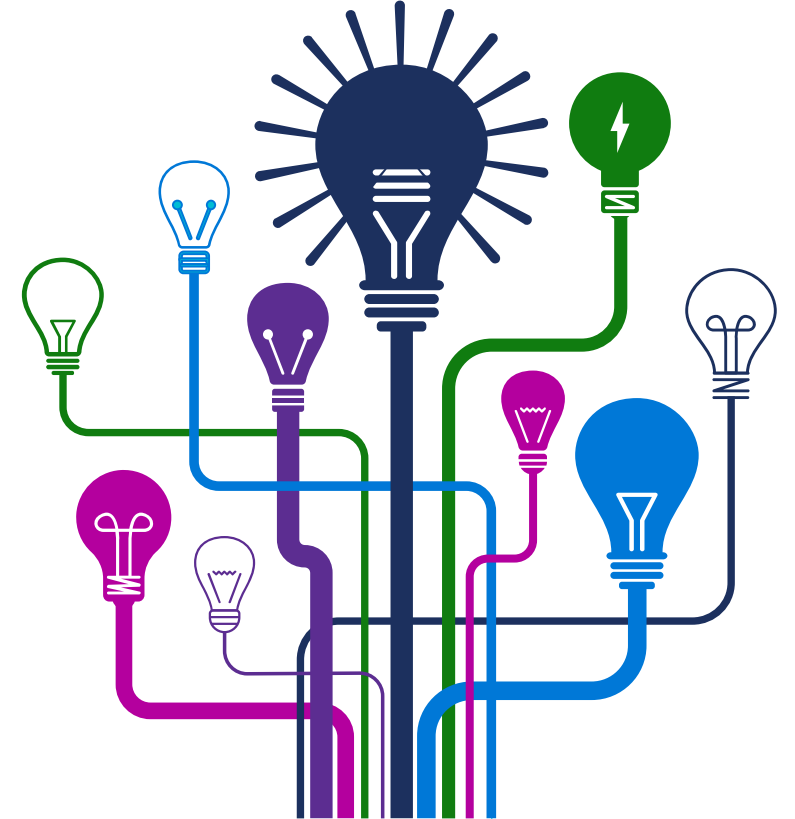
Professional Services

Business Consulting services:

1. Feasibility studies, and marketing research
2. Technology evaluation and vendor selection
3. Program / Project management
4. Activity based costing implementation services

IT professional services:

1. Dynamics 365 finance and operation ERP system implementation
2. Dynamics CRM system implementation services
3. Software development
4. Outsourcing



History of Microsoft's Enterprise ERP

We Support All Versions

1998



2006



2009



2012



Latest Releases

AX



Microsoft Dynamics



Microsoft Dynamics 365



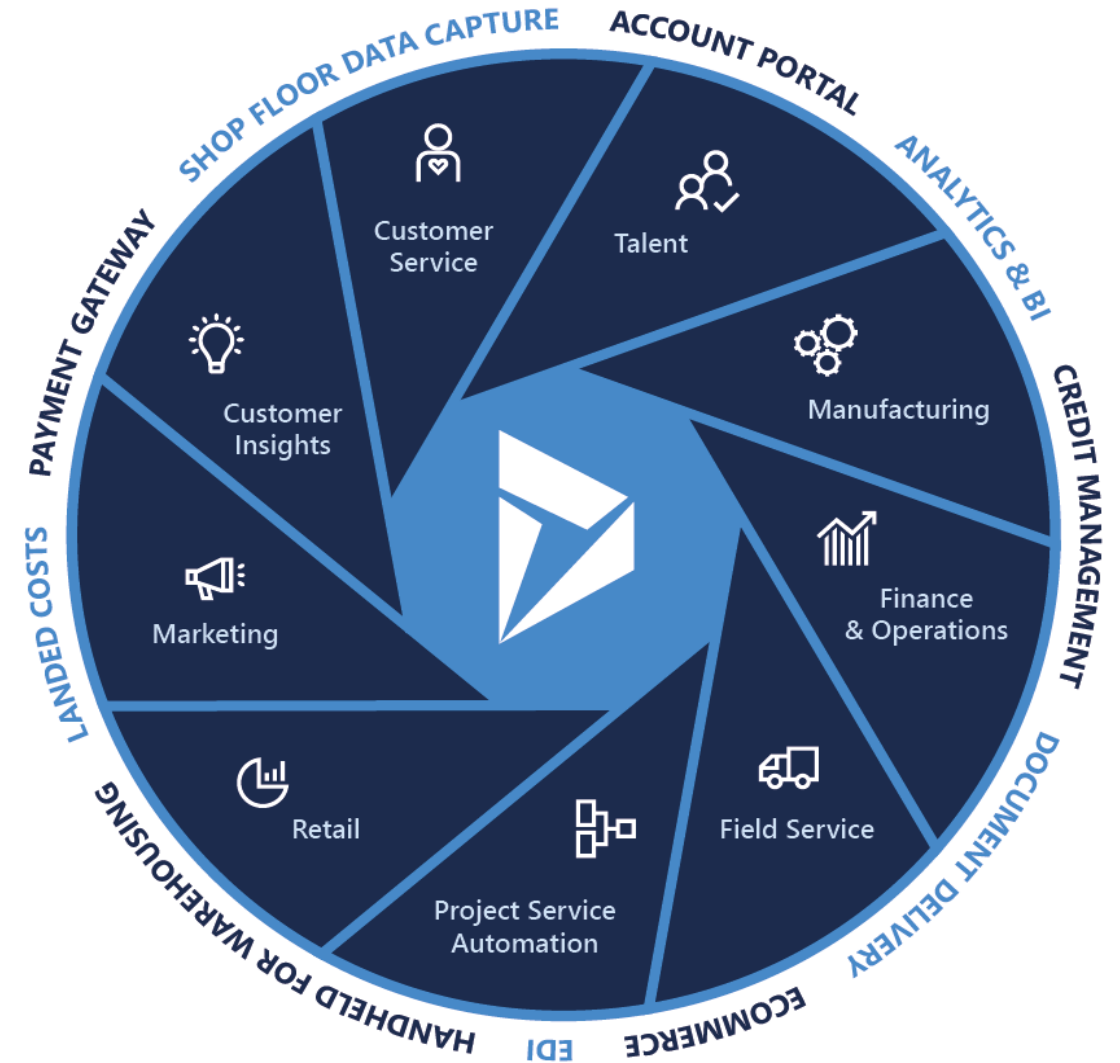
Microsoft Dynamics 365



Microsoft Dynamics 365 is a cloud-based business applications platform that combines components of customer relationship management (CRM) and enterprise resource planning (ERP), along with productivity applications and artificial intelligence tools.

Microsoft® Partner

Gold Enterprise Resource Planning



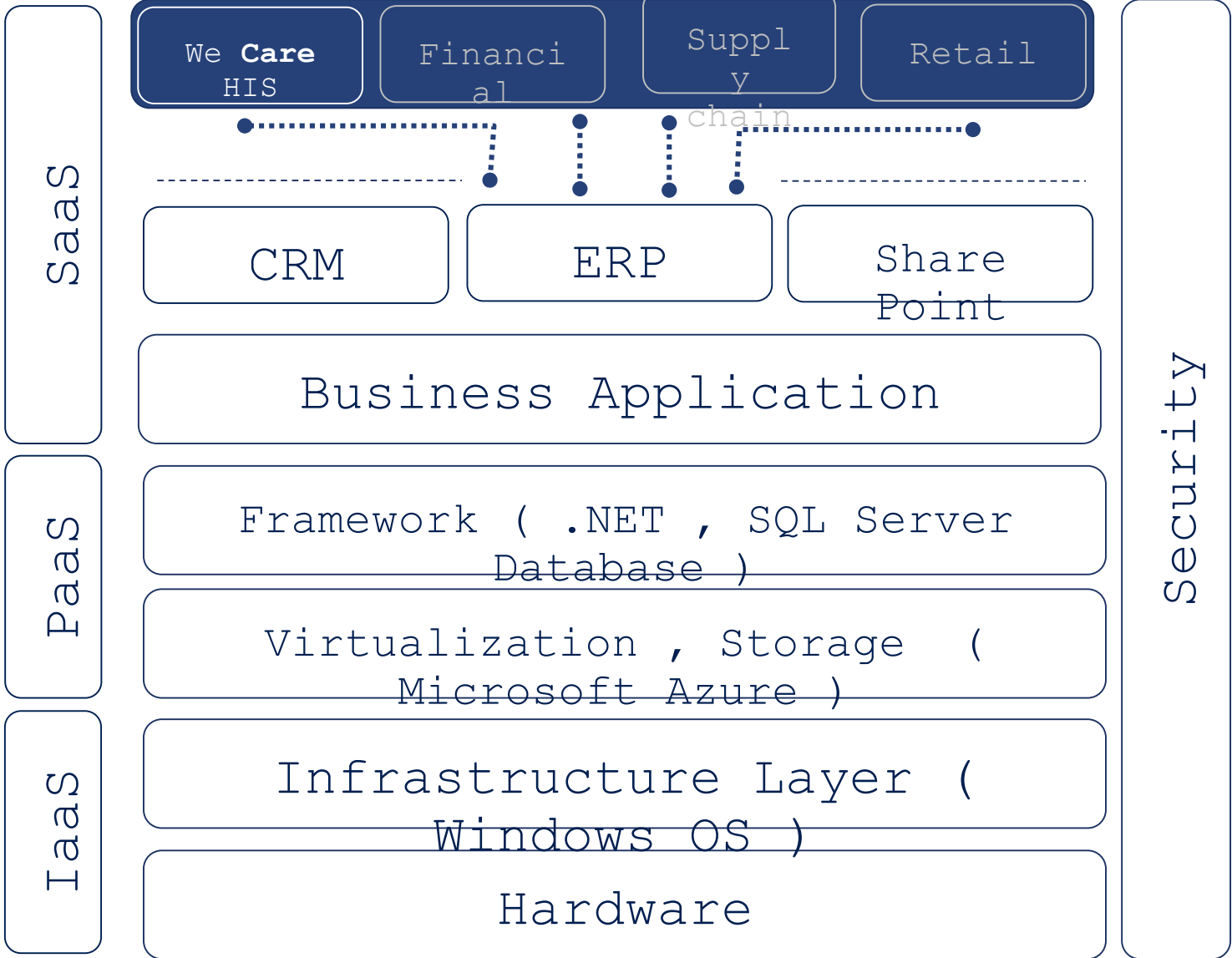
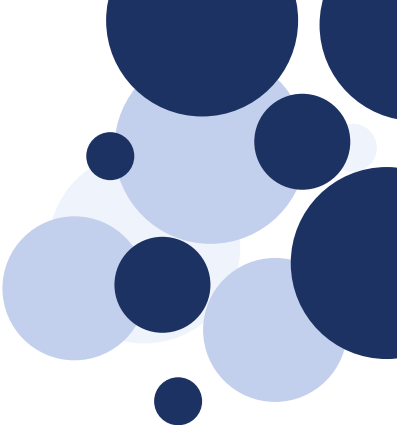
WeCare

WeCare HIS is a complete HIS (Hospital Information System) developed on top of Dynamics F&O.

Covers all medical and administrative workflows in hospital while Dynamics F&O is covering all corporate needs. With Dynamics F&O and We Care HIS add-on, all information management system required by hospitals including full medical billing and back office are solved in one comprehensive solution easily.



One-Complete HIS Solution



Core functions Business Challenges

- Centralized electrical medical records.
- Complying with new government requirements and mandates like (CBAHI, HIPAA Credential)
- Improve revenue cycle
- One fully integrated solution, that covers HIS, ERP, and HR requirements
- Reduce Cost
- Strong and automatic insurance claiming and collection process, that if it is not already integrated with insurance bodies in your country, it can be integrated easily



Real Estate & Property Management Solution

Microsoft D365 for Finance & Operations and Elite® Real Estate & Property Management solution offers one fully integrated platform, all in one ERP system automating manual processes and eliminating duplication of information from one system to the other.

PIONEERS IT & Business Consulting demonstrating its ability to meet Microsoft Corp. customers 'evolving needs in today's dynamic business environment, has built a complete solution to cater for the requirements and needs of real estate & property owners and property management companies.

The average real estate & property management company typically runs several different software solutions to manage its business.



Online Appointments Booking

- Online Booking / Notifications
- Appointment Details
- Contact Info
- Postponing, Deleting or Canceling
- List of Client's Services
- Dashboard features
- Reporting engine

قائمة المواعيد

تسجيل خروج قائمة المواعيد

Show 10 entries

Search

تاريخ الموعد	وقت الموعد	تاريخ الانشاء
01/06/2020	ص 9:40	30/05/2020
30/05/2020	ص 7:30	30/05/2020

Showing 1 to 2 of 2 entries

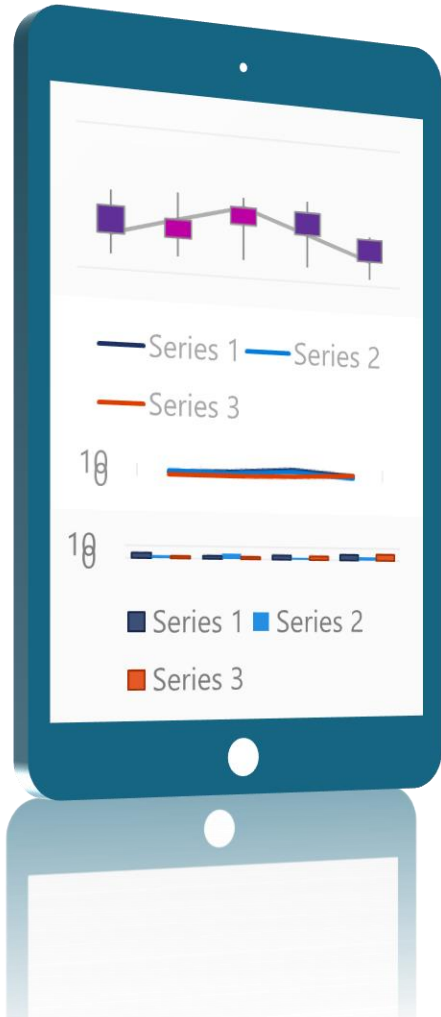
Next 1 Previous

المواعيد

تسجيل خروج قائمة المواعيد

الاثنين 01/06	الثلاثاء 02/06	الاربعاء 03/06	الخميس 04/06	الاحد 31/05
7:30 ص	7:30 ص	7:30 ص	7:30 ص	7:30 ص
7:40 ص	7:40 ص	7:40 ص	7:40 ص	7:40 ص
7:50 ص	7:50 ص	7:50 ص	7:50 ص	7:50 ص
8:00 ص	8:00 ص	8:00 ص	8:00 ص	8:00 ص
8:10 ص	8:10 ص	8:10 ص	8:10 ص	8:10 ص

Inspection & Site Checking System



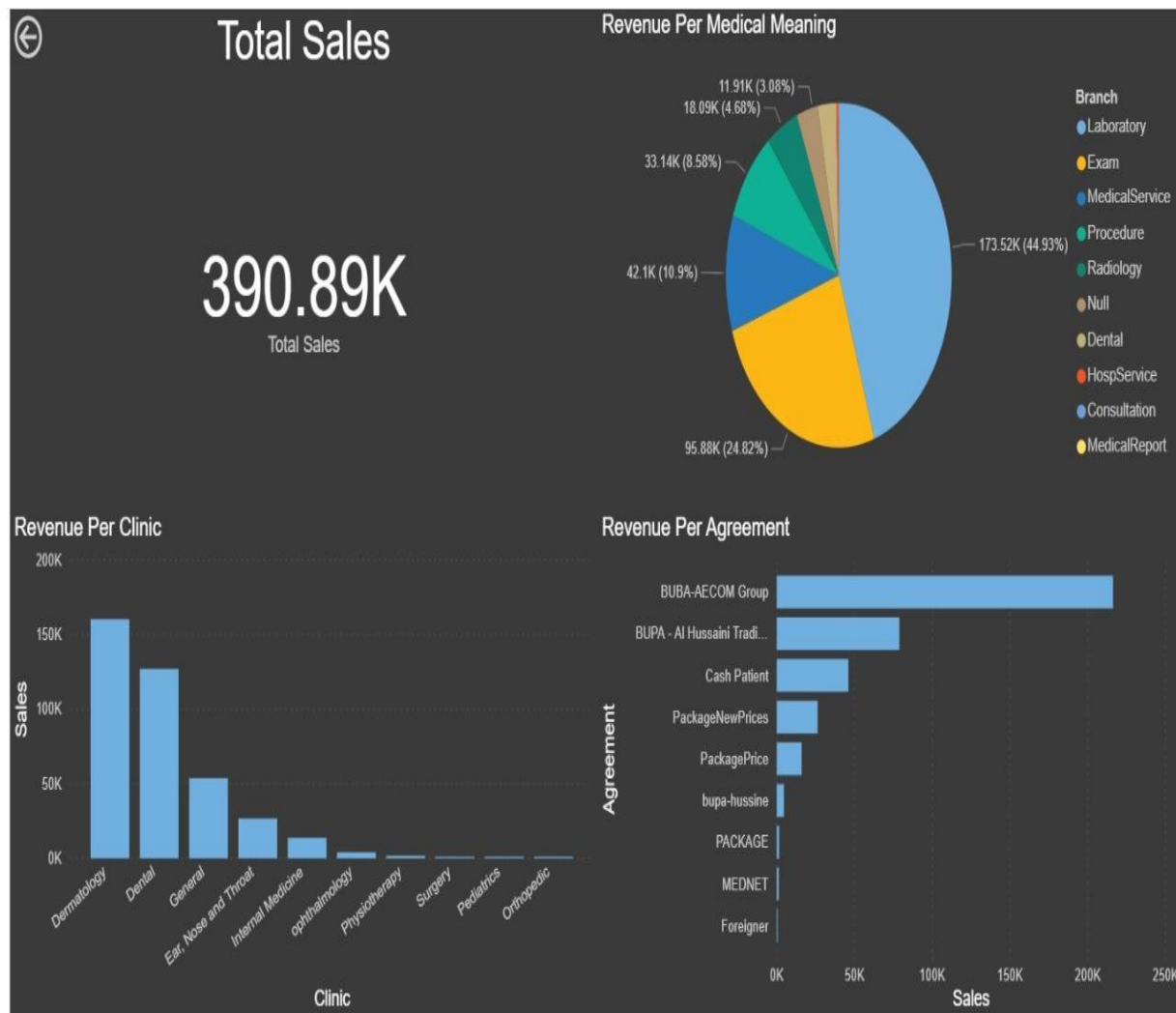
- Onsite inspection to help Organizations conduct the site visit on time and high possible accuracy of data.
- Different types of inspection:
 - Health
 - Safety
 - Environmental
 - Equipment
 - Personnel
 - Sudden visits (unscheduled)
- Audio & Video Recording, Snapshots and Screenshots.
- Dashboard showing visits results
- Follow up on Actions and Tasks

Visitors Management System



- Bilingual system (Arabic and English).
- Interoperable
- Parametrized Application
- Blacklist visitors or companies
- Different type of Visitors, VIP Visitors, Permanent, and Temporary workers at Reception / Pre-Registration by Employee or online
- Registration of Items IN and Material OUT (Laptops, Phone, or any other items carried to the premises)
- Captures basic information of a visitors
- Issue Visitor's card with photo and host details
- Ability to scan the card at every Department.
- View logs and charts.
- Reports on Daily, Monthly, Weekly basis.
- Mobile Application is available for both Android and iOS Systems.

Power BI



- Power BI is a suite of business analytics tools that deliver insights throughout your organization.
- Connect to hundreds of data sources, simplify data preparation, and drive ad-hoc analysis.
- Produce beautiful reports, then publish them for your organization to consume on the web and across mobile devices.
- Everyone can create personalized dashboards with a unique, 360-degree view of their business. And scale across the enterprise, with governance and security built-in.
- Such important dashboards, and BI tool, is available and integrated on cloud version only, it is not available on D365 on premise solutions.

Our Customers



SANA for Electrical & Telephone Co.Ltd.



المملكة الأردنية الهاشمية
وزارة الخارجية وشؤون المغتربين



MEDICANA



جوايكو | JWICO



قعوارة للطاقة
KAWARENERGY



مركز مستشفى الرشيد
AL RASHID HOSPITAL CENTER

Triumpharma
CLINICAL EVALUATION CENTER



Dünyagöz
ESTETİK

رعاية الأولية
Primary Care



Savvy Pharma



شركة مصانع الزيوت النباتية الأردنية م.ع.م.
Jordan Vegetable Oil Industries Co. Ltd.



JLUM
JORDAN LIGHT VEHICLE MANUFACTURING
الأردنية لصناعة الآليات الخفيفة

KADDB
المنطقة الصناعية
INDUSTRIAL PARK



مؤسسة
الملك خالد الخيرية
King Khalid Foundation

SHIFT
Secure and Fast



SABA

SmartBuy™
Electronics Megastore

اليوم

مستشفى الأمل
Al Amal Hospital



Dala
Arab Company For Modern Industries
الشركة العربية للصناعات الحديثة

sajdi
CONSULTING
ENGINEERING
CENTER



Our Partners





**THANK
YOU**