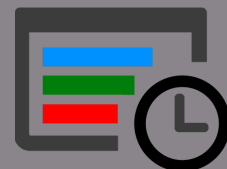


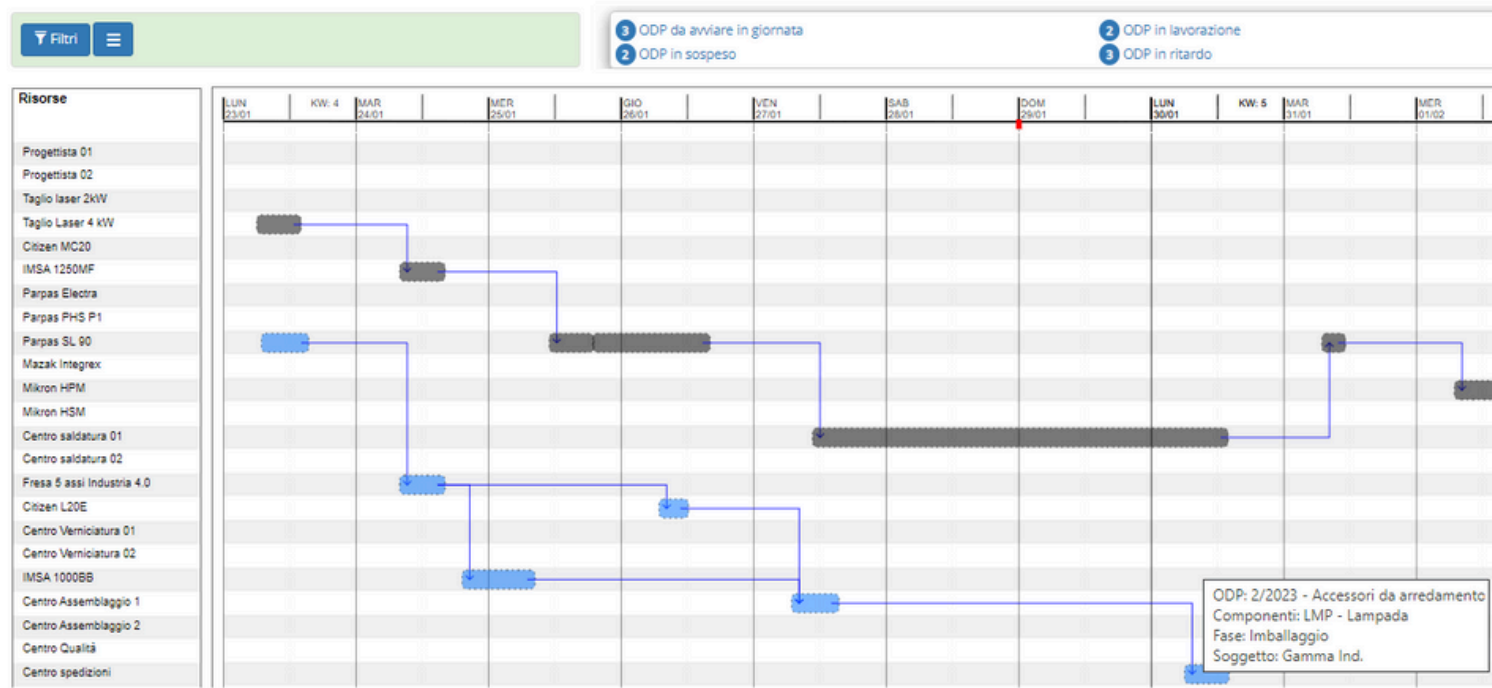
Have you got a need? Make it Real Comm

Real Comm  
Easy for real



# HyperSCHED®

Scheduler a capacità finita

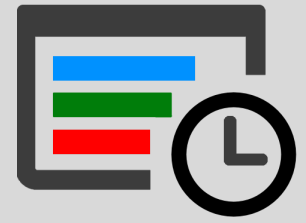


*Planning and Managing Production Resources*

Real Comm  
Via Dei Serviti, 12 - 33080 Porcia  
Via Branze, 45 - 25123 Brescia  
Tel. +39 0434 1831550  
www.realcomm.it - sales@realcomm.it



Real Comm  
Easy for real



HyperSCHED is the APS (Advanced Production System) module dedicated to finite capacity production scheduling.

Thanks to newly designed algorithms, it enables detailed planning of company resources (machines, operators, lines, and more) to manage expected commitments and keep production and delivery dates updated.

Modifications to the Gantt chart are made intuitively through drag-and-drop or by invoking specific functions. Thanks to a powerful simulation engine, it is possible to create scenarios and conduct what-if analyses.

Numerous configurations are available, ensuring maximum flexibility in use. Among these, we include:

- Aggregation of similar operations
- Advanced constraints between phases (same start/end, parallel execution, ...)
- Dynamic recalculation based on MES progress recorded on the shop floor
- Integration with material planning (MRP)
- Customizable notifications and alarms (e.g., delays, missing materials, ...)

For further information: [www.realcomm.it/en/hypersched](http://www.realcomm.it/en/hypersched)

*HyperSCHED is the visual scheduling software, highly versatile and customizable based on specific production needs and the application sector.*

