



Automation Solution for FACILITY MANAGEMENT

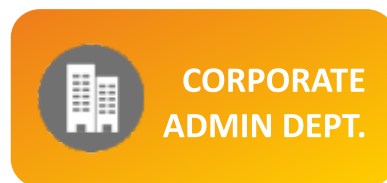
[www.tefmo.com](http://www.tefmo.com)

SPECTRAFM - is easy-to-use, practically works in all environments; customized software that will meet and exceed your expectations high performance, automation tool to supplement and integrate the facility management operations to meet and exceed the requirements of the organization to derive cost-effective solutions.

We have multiple modules developed as per market/industry requirements & the same can be customized as per your business needs:

- Facility Helpdesk Management
- Maintenance, SLA, Task & Escalation Matrix Management
- Asset, Inventory, Lease, AMC & Material movement Management
- Accommodation Management (Guesthouse, Villa, Club House, Township)
- Office Space Management (Conference, Cabins, Cubicles, Workstation)
- Transport Management (Employee, Visitor, Cargo, GPS Tracking)
- Food & Beverage Service Management (Cafeteria, Canteen & Dining)
- Contractual Staff Attendance & Vendor Contract Management
- Visitor, Pass, Incident and Material Gate Pass Management
- Expense and Bill Track Management

## SPECTRA FM DOMAINS



## Architect

SEPCTRA-FM – Web Application is an n-Tire architecture, developed on ASP.Net with C#.Net - Framework 4.5, Using Microsoft Visual Studio 2017 as the front end and MS SQL 2012 R2 as back-end database.

- On Premises Solution
- Cloud Solution
- Hybrid
- Email SMTP Rely Server
- SMS Gateway

## Mobile App.

SPECTRAFM application is enabled with Mobile application for End-user and Operation Team. Customized Screen design would be provided to match the Clients color scheme .



TEFMO stands for Technology Enabled Facility Monitoring. Over the years, TEFMO has analyzed and understood the challenges in facility management space across various industry segments in India and has developed and instituted the best industry practices in building SPECTRAFM.

## OUR VISION

To improve in a constant manner and mature as a leading developer of tech-savvy facilities management software products in an ever changing competitive world

## OUR MISSION

Keeping our customer's satisfaction atop, creatively designing and developing optimal software to meet market demands by superb quality solutions that creates value and reliable competitive advantages for our customers by continuously exploring innovative ideas and new techniques

## Flexible plan to meet your business needs

We can meet your specific solution through the individual module or integrate multiple modules, either as "Perpetual License" on a one-time payment or on a rental basis as "SaaS".

**Enterprise plan:** The ultimate solution that enables you to use the bundled software solutions in facility management space integrating several sites/facilities .

**Standard plan:** Scalable facility management solution module available for Select Module and single site installation.

### Training & Support

Our team of forward thinkers and revolutionizing people aspires to provide you with the best of solutions with perfection par excellence. Our key focus is always to provide you with reliable solutions which are carefully designed and premeditated with stringent quality standards. We follow extremely non-compromising strategies to deliver results which are completely based on the customer's requirements. Our every endeavor is in the direction of helping our customers streamline their operations in order, to take full advantage of the upcoming technologies and systems.

### Dashboard & Reports

Dashboard and Reports are part of the Application for both Web and Mobile. Each modules have around 15 reports and one dashboard. We help in developing further Reports or Dashboard based on the customers requirement.

### Advantage

TEFMO offers comprehensive and integrated solutions for business process functionalities. It is secured, scalable & has flexible implementation methodology with a guaranteed support system to ensuring a quick return on investment.



# WHY TEFMO

## Value Proposition

**Complete Solution Suite-** SPECTRA FM is an end-to-end solution for varied business segments.

**Functionality -** SPECTRA FM demonstrates full functional integration that gives accurate visibility, insight for improvement, mail triggers and comprehensive management reporting.

**Adaptability-** Integration capability with existing packages.

**User Friendly-** Easy to use forms, reports and queries; Message pop ups and help menu guide through the progression.

**Industry Experts-** A winning combination of effective management and strong technical skills. Concept experts of application software are experienced Facility Managers and domain experts who enhance the implementation with their experience

**Pricing-** By far the best value for money, most competitively priced

## Support & Customization

### Support at Arms' length

Effective localization - Build to suit working environment

Initial Customization to suit your specific requirement

No sale without support.

Dedicated resource for implementation

At SPECTRA FM, training is an integral part of the implementation.

Future up-gradation with add-on features and technology

## Our Clients

The logo for Adani, featuring the word "adani" in a lowercase, sans-serif font with a color gradient from blue to purple.

## TEFMO SOFTWARE SOLUTIONS PVT. LTD.

Chennai | Bengaluru | Mumbai | Delhi | Hyderabad | Ahmedabad

[www.tefmo.com](http://www.tefmo.com)

## Strategic Sales Partner

