

## RecoveryTools GoDaddy to Google Workspace Migration Tool

Migrate GoDaddy Emails to Google Workspace and Other Saving Platforms with the Top-Rated GoDaddy to G Suite Migration Tool

A lot of GoDaddy users struggle to migrate GoDaddy emails to Google Workspace and other platforms with quick and easy solution. We have a perfect tool for users who want to easily and instantly migrate GoDaddy emails to G Suite and another desired format. The GoDaddy to Google Workspace migration tool is capable of migrating multiple GoDaddy Accounts using batch mode to 20+ file formats, email clients and webmail accounts. The tool also offers advanced filters for selective migration of GoDaddy emails as per user's specific criteria like date range, subject, etc.

Visit the Official Page: [RecoveryTools GoDaddy to Google Workspace Migration Tool](#)

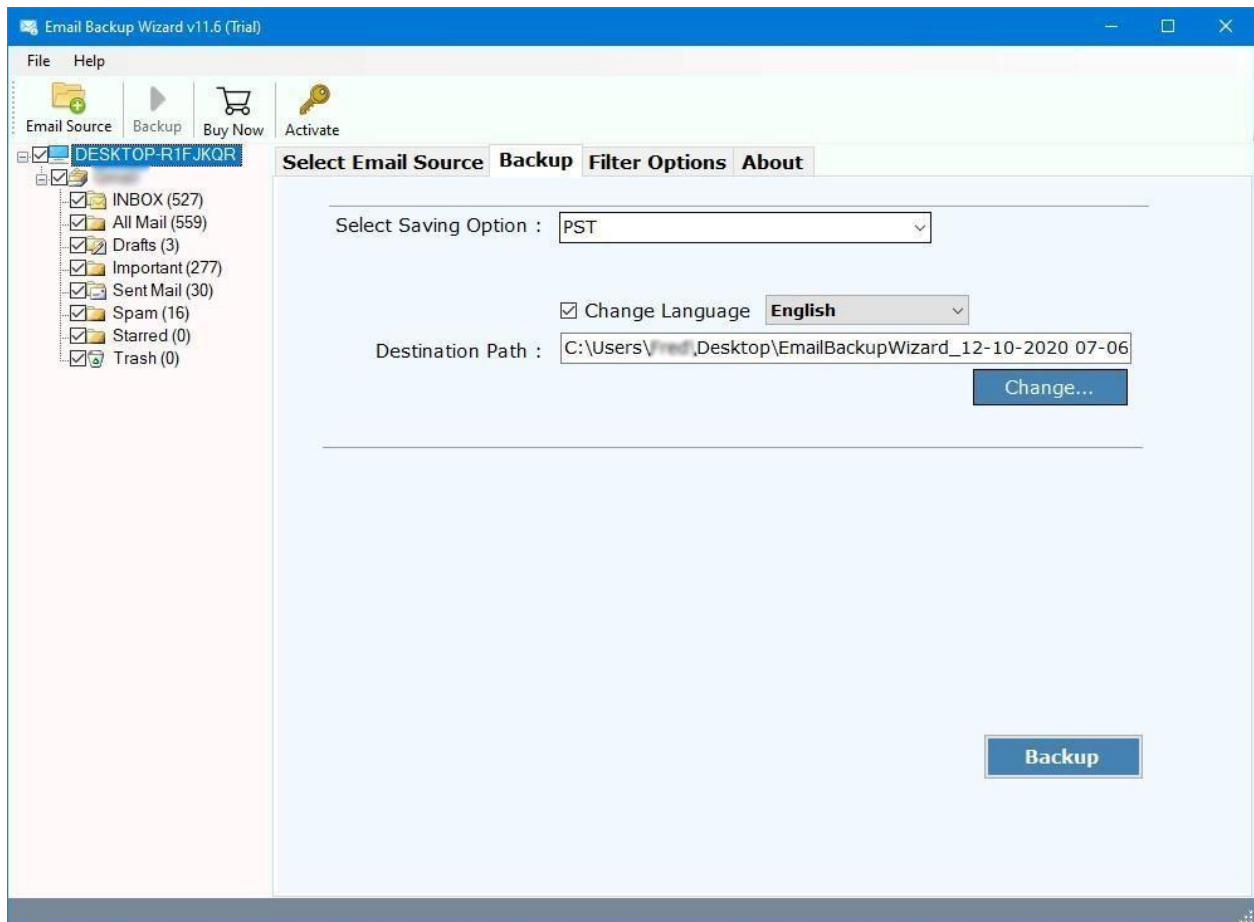
**Step 1: Run the software and select Email source.**

The screenshot shows the 'GoDaddy Email Backup Wizard v6.0 (Trial)' window. The interface includes a menu bar with 'File' and 'Help', and a toolbar with icons for 'Email Source', 'Backup', 'Buy Now', and 'Activate'. On the left, the 'Email Source' pane lists 'GoDaddy EMAIL', 'GoDaddy Office 365', and 'GoDaddy Exchange Se'. The main area has tabs for 'Select Email Source', 'Backup', 'Filter Options', and 'About'. The 'Select Email Source' tab is active, displaying a form titled 'Please Enter your Email Account Credentials'. This form contains fields for 'Email Address' and 'Password', and two checkboxes: 'Use Batch Mode' (with the note '(Use this for batch multiple Email Accounts backup)') and 'Use Proxy' (with the note '(Connecting Email Source using Proxy Server)'). Below the form, a green message states: 'If you are facing issues during login to your account. Please visit below tutorial to know, what exact settings are required to be enabled.' followed by a link '[ Visit Settings & Troubleshooting Tutorial ]'. At the bottom right, there are 'Reset' and 'Login' buttons.

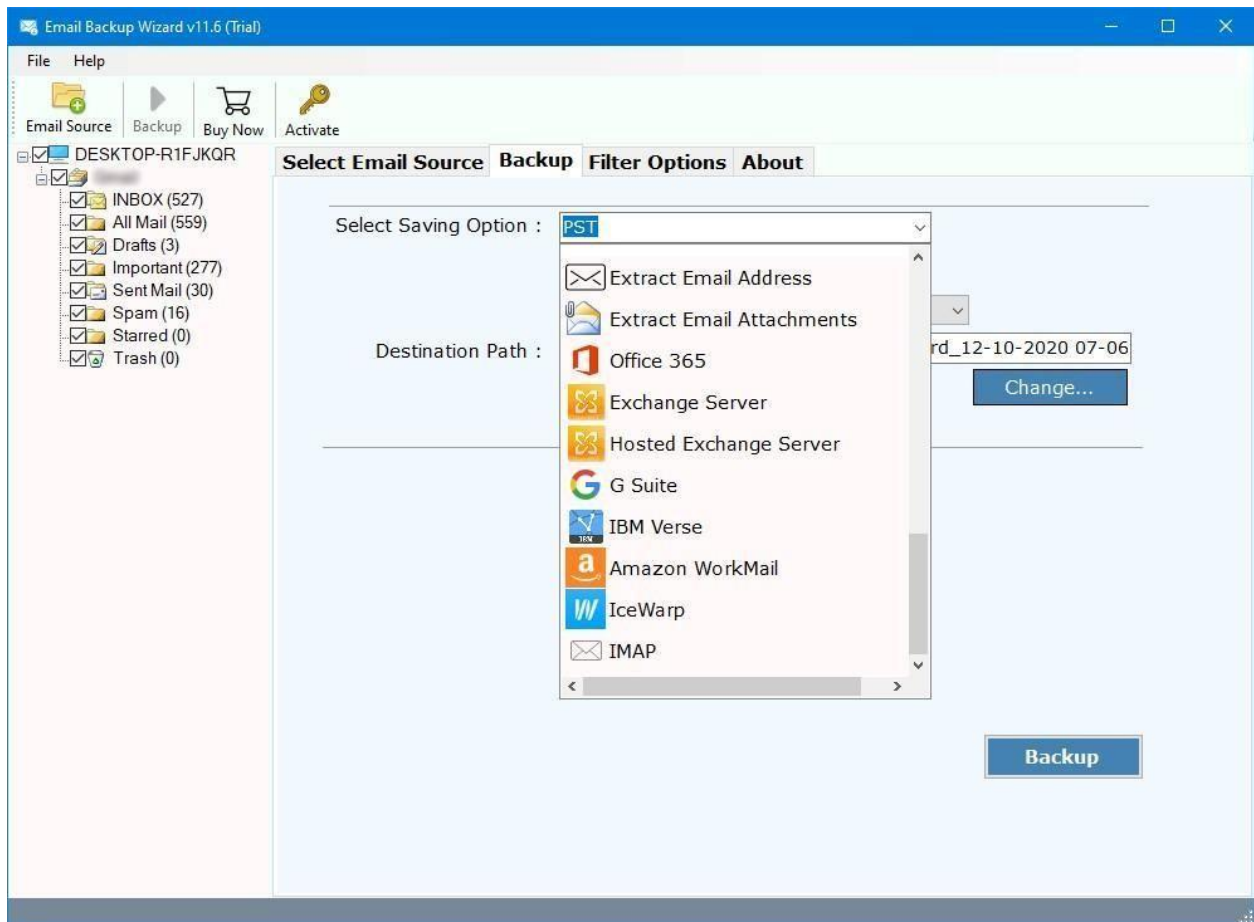
Step 2: Enter the **login details** of email account in the software panel.

The screenshot shows the 'GoDaddy Email Backup Wizard v6.0 (Trial)' window. The interface includes a menu bar with 'File' and 'Help', and a toolbar with icons for 'Email Source', 'Backup', 'Buy Now', and 'Activate'. A sidebar on the left, titled 'Email Source', lists three options: 'GoDaddy EMAIL' (selected), 'GoDaddy Office 365', and 'GoDaddy Exchange Se'. The main panel has tabs for 'Select Email Source', 'Backup', 'Filter Options', and 'About'. The 'Select Email Source' tab is active, displaying a form titled 'Please Enter your Email Account Credentials'. This form contains fields for 'Email Address' and 'Password' (masked with dots). Below these fields are two checkboxes: 'Use Batch Mode' (with the note '(Use this for batch multiple Email Accounts backup)') and 'Use Proxy' (with the note '(Connecting Email Source using Proxy Server)'). At the bottom of the form, there is a green text block: 'If you are facing issues during login to your account. Please visit below tutorial to know, what exact settings are required to be enabled.' followed by a link '[ Visit Settings & Troubleshooting Tutorial ]'. Two buttons, 'Reset' and 'Login', are located at the bottom right of the form area.

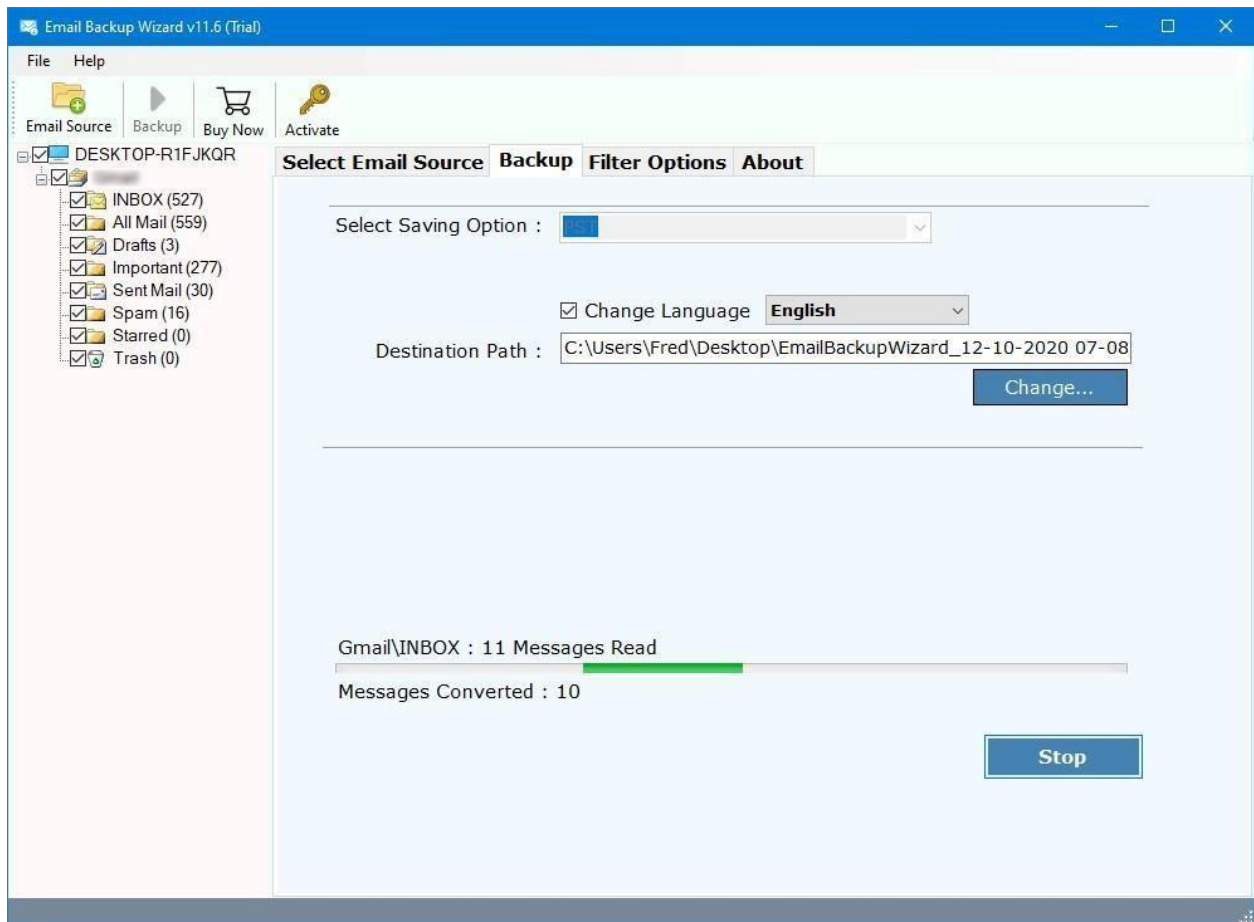
Step 3: Choose the **required email folders** from the list.



Step 4: Select the **desired saving option** from the list.



Step 5: Click the **Backup** button to migrate GoDaddy emails to Google Workspace account.



Following the above steps users can migrate all their GoDaddy emails along with attachments, contacts, calendars, etc. to your desired platform seamlessly without losing any data. The efficient tool migrates complete data from inbox, outbox, sent items, etc. from the GoDaddy mailbox.

## Conclusion

The GoDaddy to Google Workspace migration tool is the best rated software as per the experts as the tool is capable of migrating complete mailbox with high-speed and 100% accuracy. The safe and secured tool maintains the folder hierarchy and preserves the email components as original without changing it during the migration process. The tool also provides multiple file naming options for users to manage and organize data as per their convenience.