

RecoveryTools for MSG to Outlook Import

Import MSG to Outlook in Bulk with Attachments with the Professional Import Tool

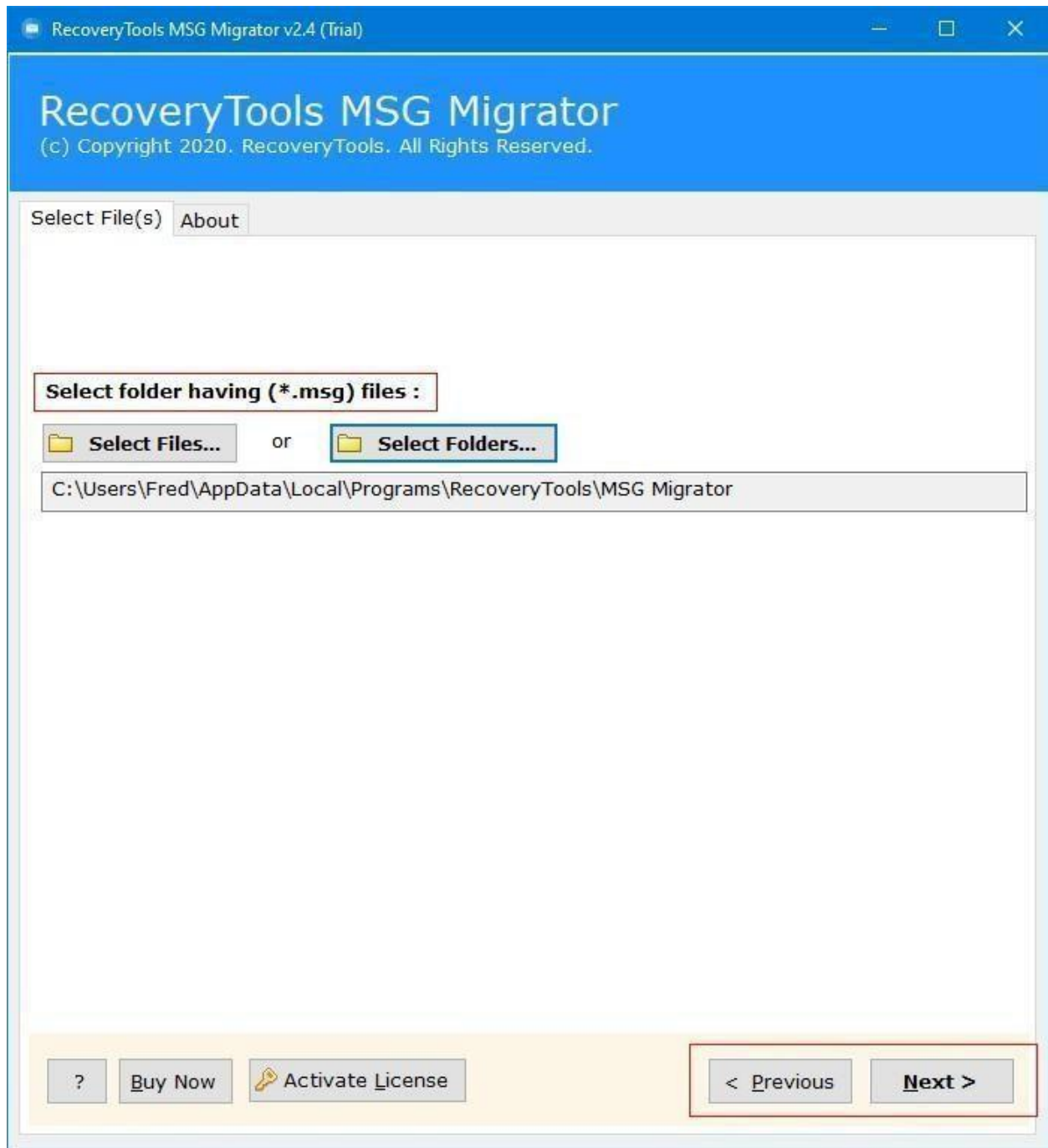
Many users look to import their important MSG files to Outlook format for multiple reasons. Well, we have got an advanced Import solution for the users who wish to import MSG files to Outlook smoothly without wasting any time and effort. The MSG to Outlook Import software is capable of converting multiple MSG Files to Outlook along with attachments, hyperlinks and metadata properties and other 30+ file formats and email clients like PST, EML, EMLX, Outlook, Yahoo Mail, Office 365 and more. The tool provides the batch export Outlook MSG files to Outlook option for users to import large volumes of data in a short time span. The software guarantees to preserves the original properties of the email data while protecting the privacy of the emails.

Visit the official page: [RecoveryTools for MSG to Outlook Import Software](#)

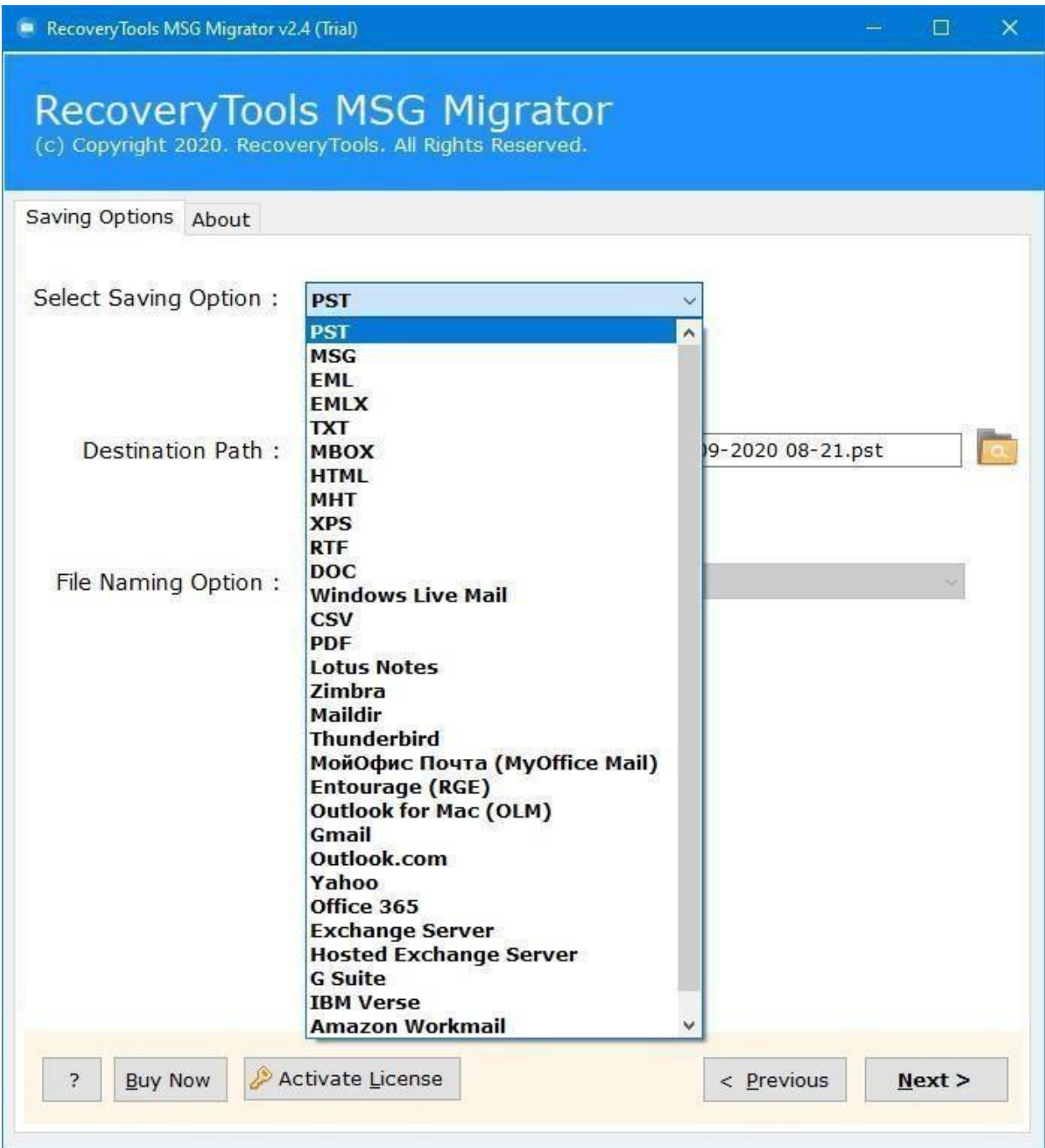
Step 1: Download and **Run** the software on your P.C.



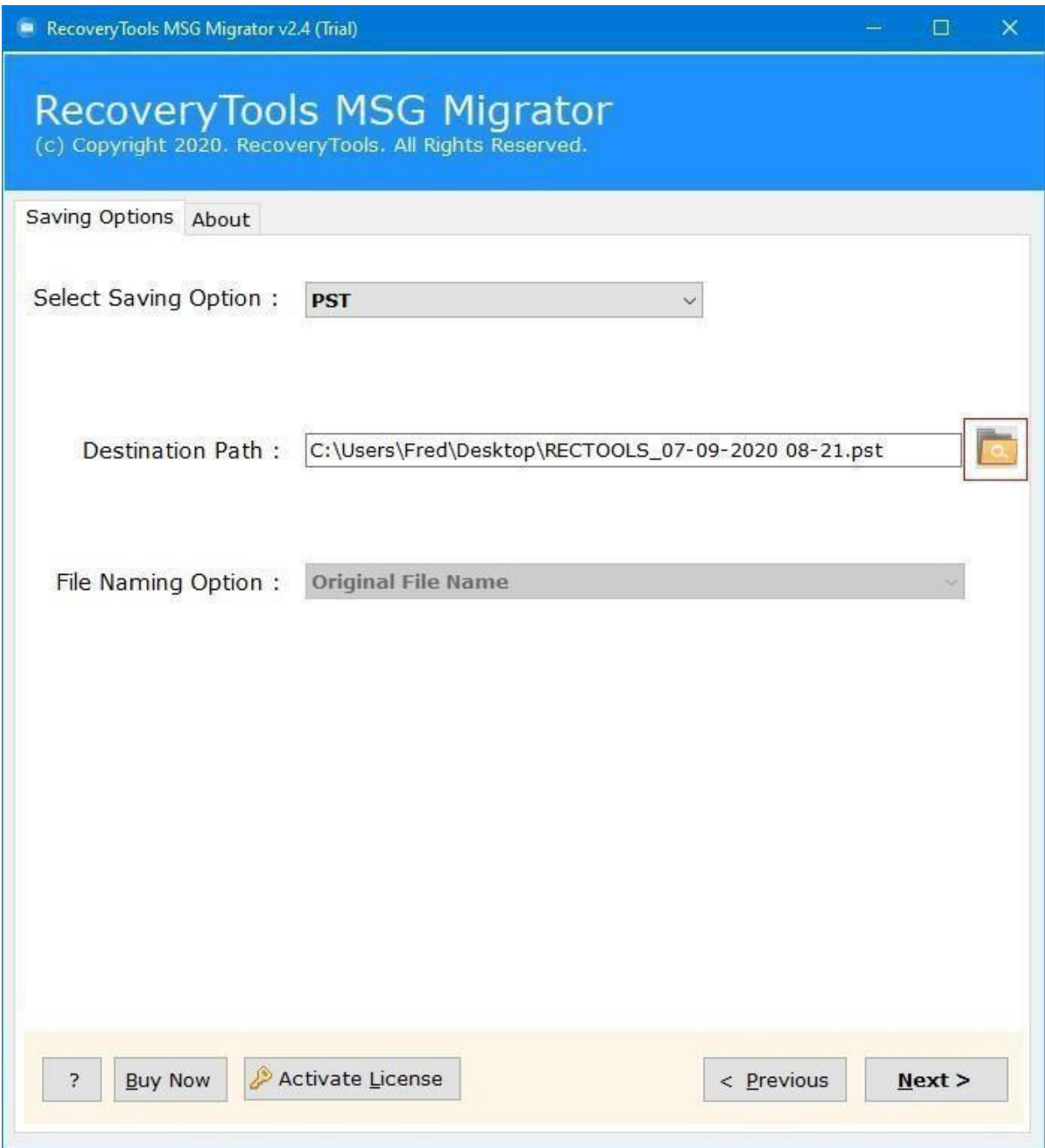
Step 2: Add the desired **MSG Files** or **Folders** to convert.



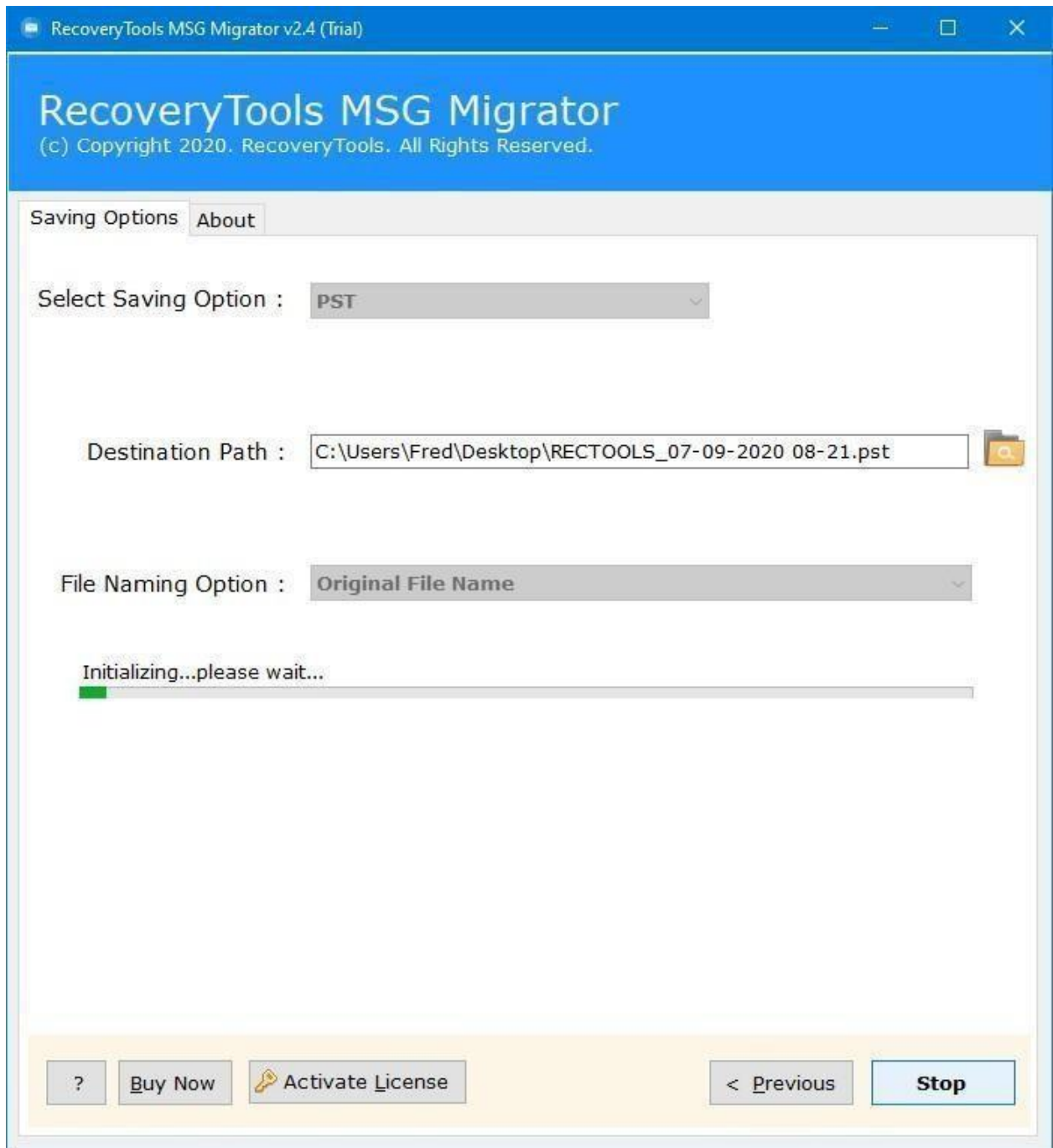
Step 3: Select the Outlook **saving format** from the list of options.



Step 4: Select the **location** to save your converted files



Step 5: Click the **Next** button to initiate the conversion process.



Users can import their MSG file data to Outlook in bulk at once using the above steps. The software offers the friendly interface so users with no technical background can also easily import MSG files to their desired formats. Download the tool to enjoy the smooth conversion of your email data.

Conclusion

The advanced software has been specifically designed to ease the MSG to Outlook conversion process for users who deal with large volumes of data. It provides multiple file naming options for users to manage large number of files in an organized manner. The efficient and secured tool preserves complete data accurately without making any changes the source MSG file.

