

## RecoveryTools Roundcube to Gmail Migration Tool

Ideal Solution to Migrate Bulk Roundcube Webmail to Gmail and Other 25+ File Format

The RecoveryTools Roundcube to Gmail migration tool is an all-in-one solution for all those users who are seeking a solution to convert their Roundcube webmail emails to Gmail. Using this tool, one can effortlessly download emails from any webmail such as Roundcube, Horde webmail, or SquirrelMail to the desired standard file format, email clients, or mail servers. Moreover, this Roundcube to Gmail migration tool maintains the original label hierarchy of the email source and also keeps the attributes such as header information, email data, email addresses, layout, and so on intact throughout the Roundcube to Gmail migration process. Plus, to make the result more specific and organized, the tool offers various advanced filters such as From, To, Subject, Date Range, etc., and multiple file naming options.

Visit the official page: [RecoveryTools Roundcube to Gmail Migrator](#)

**Step 1: Install and run** the Roundcube to Gmail migration tool on your system.

Webmail Backup Wizard v6.0 (Trial)

File Help

Email Source Backup Buy Now Activate

Email Source

- Roundcube Webmail
- Horde Webmail
- SquirrelMail Webmail

Select Email Source Backup Filter Options About

Please Enter your Email Account Credentials

Email Address :

Password :

☐ Use Batch Mode (Use this for batch multiple Email Accounts backup)

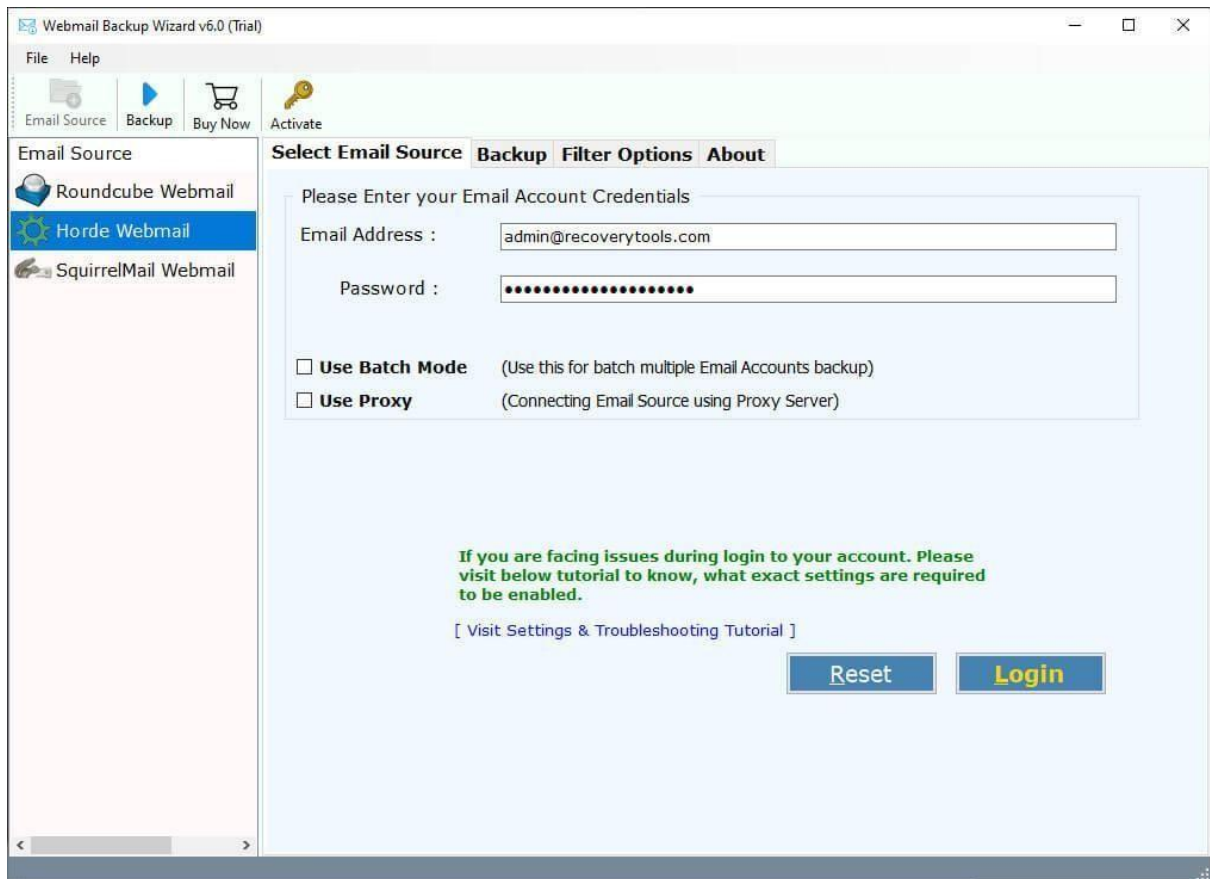
☐ Use Proxy (Connecting Email Source using Proxy Server)

If you are facing issues during login to your account. Please visit below tutorial to know, what exact settings are required to be enabled.

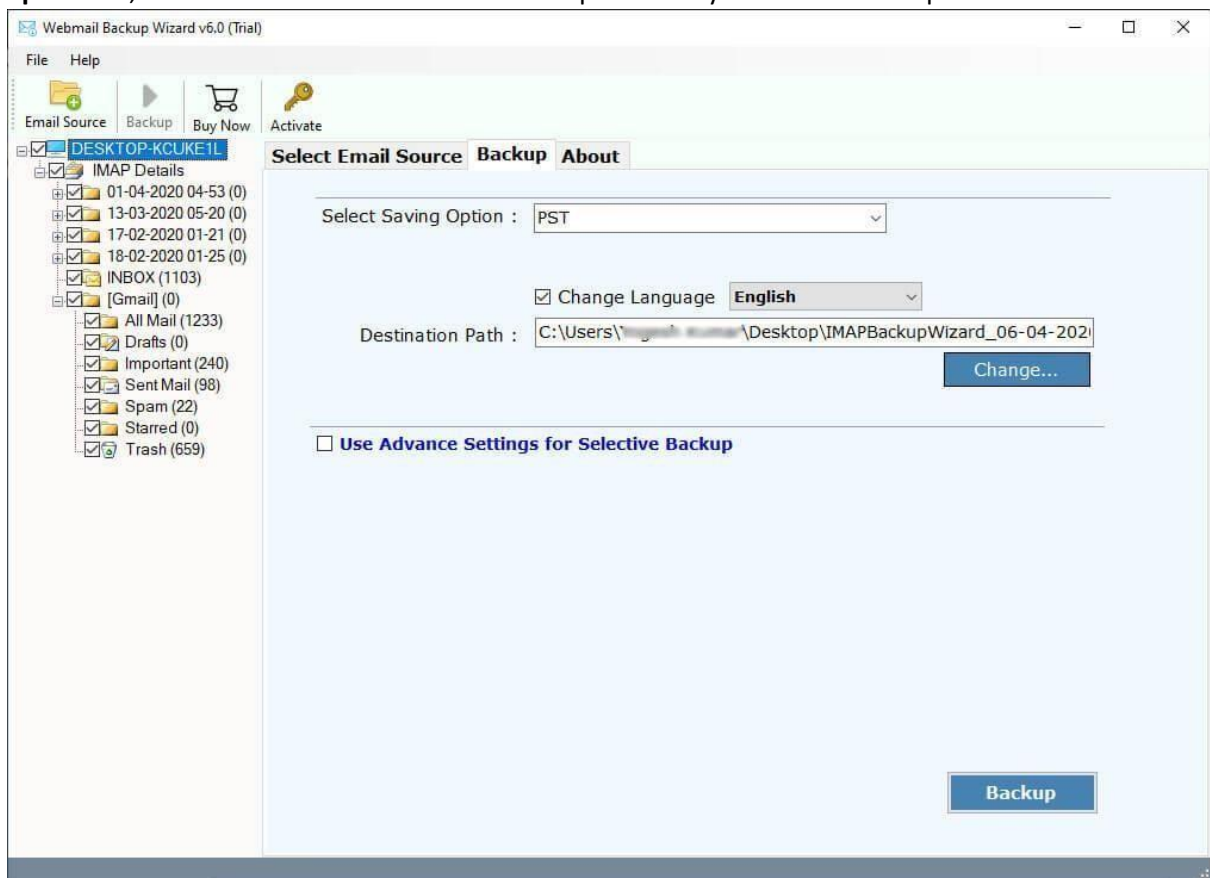
[ Visit Settings & Troubleshooting Tutorial ]

Reset Login

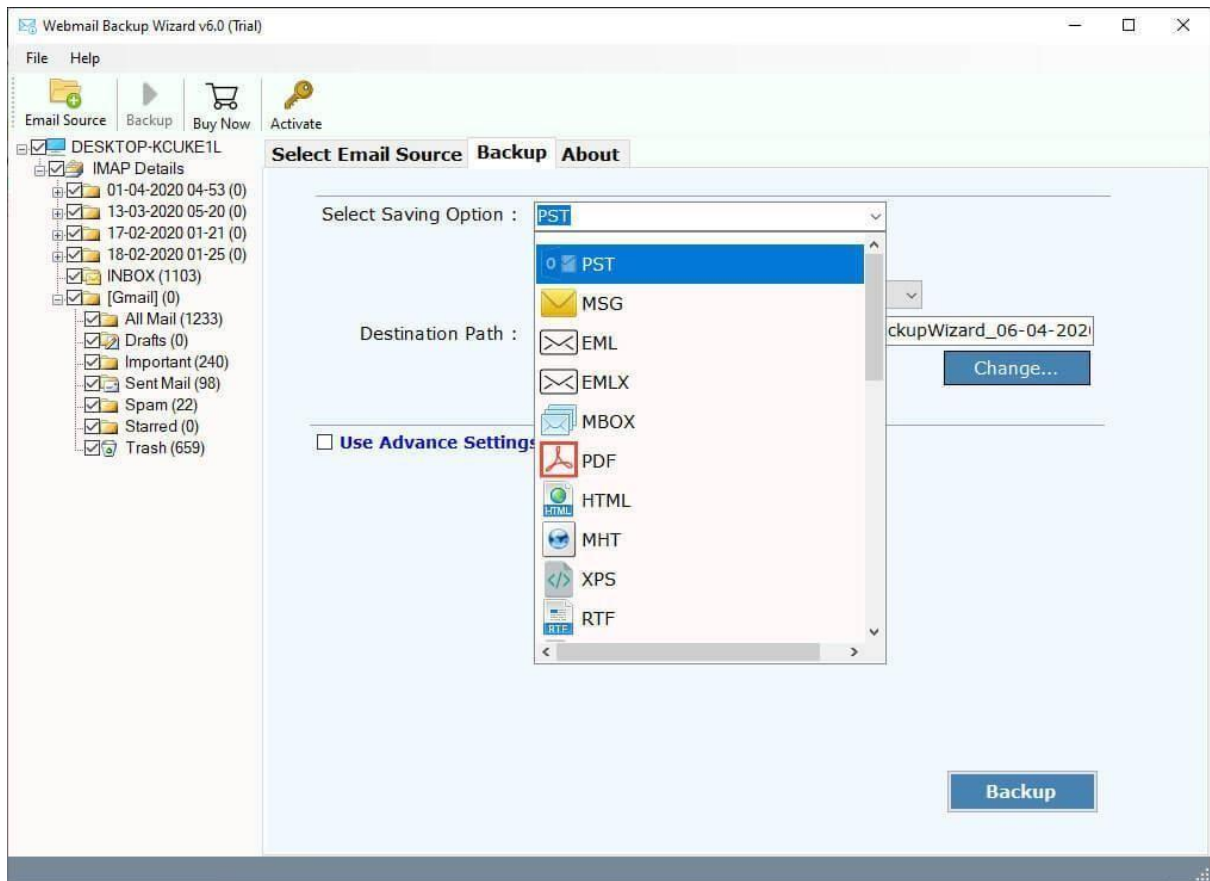
**Step 2: Choose the email source and share the credentials.**



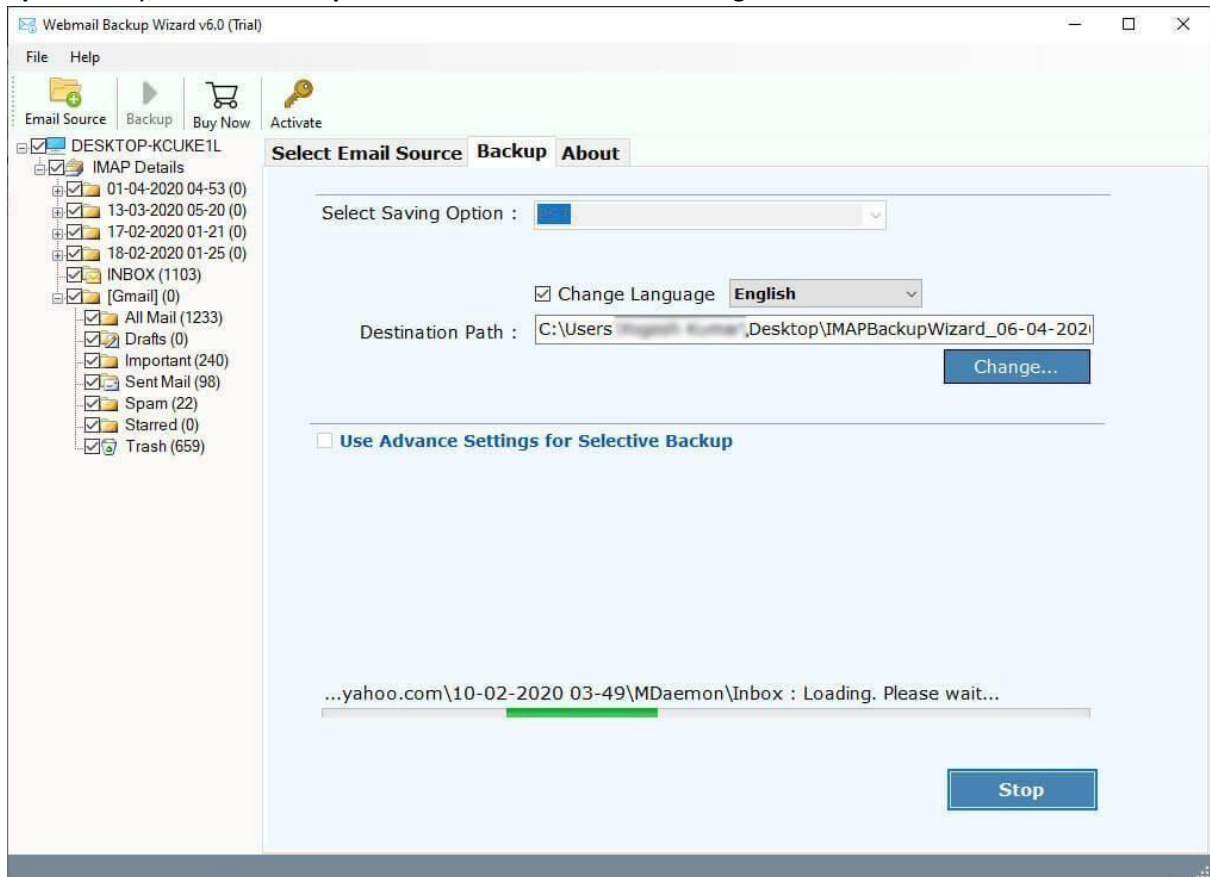
**Step 3:** Next, select the files and folders from the panel that you want to backup.



**Step 4:** Now, choose the file-saving option and apply advanced filters.



**Step 5:** Finally, click on **Backup** and the Roundcube to Gmail migration is done.



When the process to download Roundcube webmail emails to Gmail is completed, the tool automatically shares a notification on the screen stating the success status of the process and the file saving destination of the output.

## **Conclusion**

The RecoveryTools Roundcube to Gmail migration tool is very versatile and compatible enough to run in all editions of the Windows operating system. Over and above that, to let the users understand this utility's features, the developers have also introduced a demo version which is completely free of cost. Therefore, by downloading this, one can explore the tech-friendly interface and straightforward features of this Roundcube to Gmail migration tool.