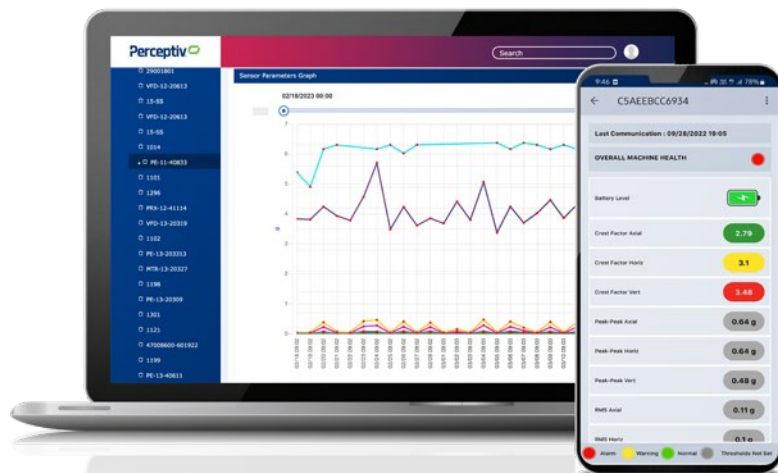




INTELLIGENT RELIABILITY SOLUTIONS



A GLOBAL MANUFACTURING LEADER

125
YEARS

>220
GLOBAL
SITES

~36,100
GLOBAL
ASSOCIATES

**A LEGACY OF ENGINEERING
EXPERTISE & INNOVATION**



DRIVES



BEARINGS



CONVEYING



AUTOMATION



COUPLINGS



GEARING



COMPONENTS



INTELLIGENCE



WE PREDICT A MORE RELIABLE TOMORROW

Driving next generation outcomes through digital reliability solutions, creating intelligent industrial equipment.



DIGITAL TRANSFORMATION TRENDS

SMART FACTORY OF THE FUTURE

- Artificial Intelligence (AI)
- Machine Learning (ML)
- Industrial Internet of Things (IIOT)
- Data Analytics & Visualizations
- Networked Digital Ecosystems

DIGITAL RELIABILITY

- Remote Condition Monitoring
- Predictive Maintenance
- Reliability as a Service
- Intelligent Automation
- Data Driven Supply Chain

TECH ENABLED WORKFORCE

- IT/OT Convergence
- Digital, Automated Processes
- Maintenance & Predictive Tools
- Cost Optimization
- Staff Augmentation

PREDICTIVE MAINTENANCE DRIVES RESULTS

Reduces Maintenance Costs By **50%***

Increases Machine Life Up To **40%****

Decreases Spare Parts Inventory By **30%***

Reduces Unexpected Failures By **55%***

* Reliabilityweb.com. "The Top 6 Benefits of Predictive Maintenance." *Reliabilityweb*, Reliabilityweb, 16 Dec. 2021.

** Dilda, Valerio, et al. "Manufacturing: Analytics Unleashes Productivity and Profitability." *McKinsey & Company*, McKinsey & Company, 14 Aug. 2017.

WHY PERCEPTIV™ INTELLIGENCE

TRUSTED EXPERTISE

125 years engineering experience and millions of products in the field uniquely position us to monitor performance & efficiency

PRESCRIPTIVE RELIABILITY INSIGHTS

Our team of reliability analysts with deep industry knowledge deliver solutions that support your outcomes

BROAD PORTFOLIO

Full breadth of sensors in a single, unified system to connect all your Powertrain and Automation equipment

OPEN ARCHITECTURE

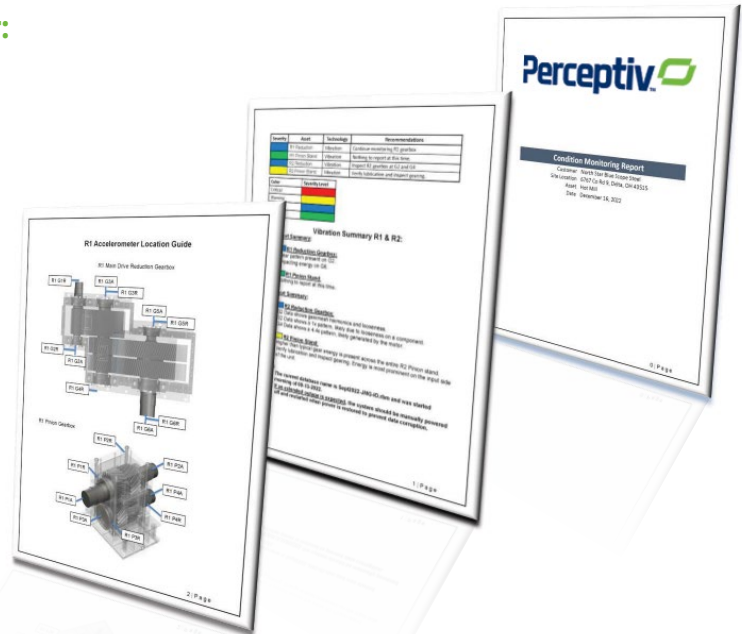
Flexible integration options to support interoperability with your manufacturing and control systems

RELIABILITY SERVICES

Expert support for reliable equipment:

- On-site Diagnostics
- Solution Design
- Installation & Implementation
- Statistical Alarm Calculations
- Predictive Analytics
- Customer Success Management
- Asset Tagging
- Prescriptive Reports From Certified Analysts

Various Service Packages Available



Asset Management: Tag-It Program

The Tag-It Program, an asset tagging service, streamlines maintenance, repair and operations (MRO) processes, increases order accuracy, consolidates inventory, and reduces time to reorder equipment by 30%.



1

TAG ASSETS WITH QR CODES



2

SCAN QR CODE WHEN PROBLEM ARISES



3

VIEW ASSET, INTERCHANGE COMPONENTS



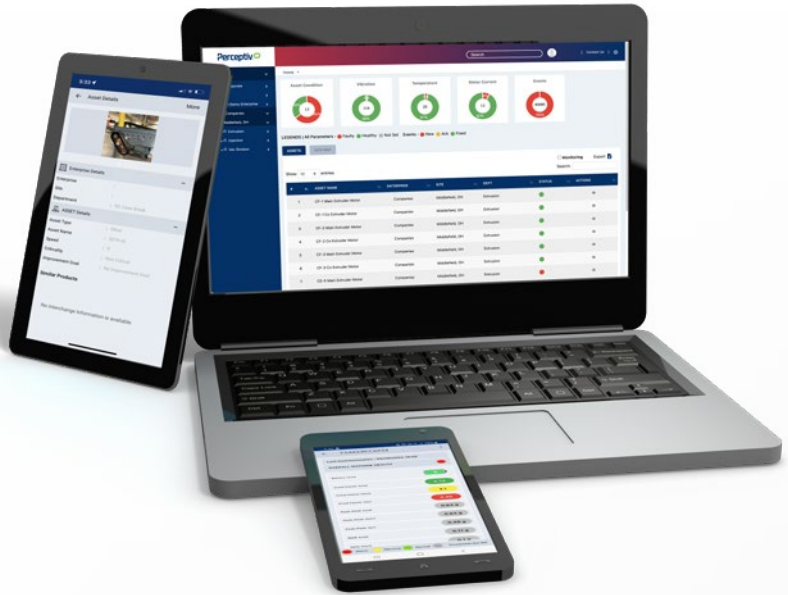
4

CLICK TO REORDER COMPONENTS OR PARTS

PERCEPTIV™ PLATFORM

Prescriptive insights at your fingertips:

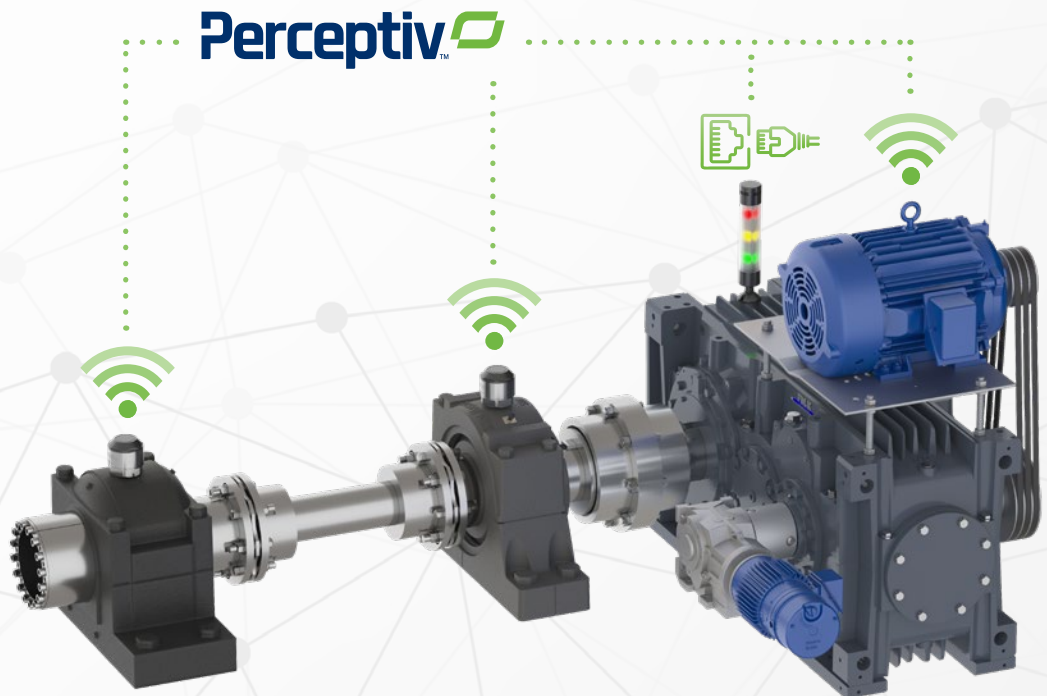
- Predictive Maintenance
- Condition Monitoring
- Asset Management
- Interchange Insights
- Mobile
- Analytics
- Alert Configuration & Notification
- Asset Identification & Hierarchy
- Data Visualization
- E-Commerce Integration
- Location Management
- User Management



INTELLIGENT SENSORS

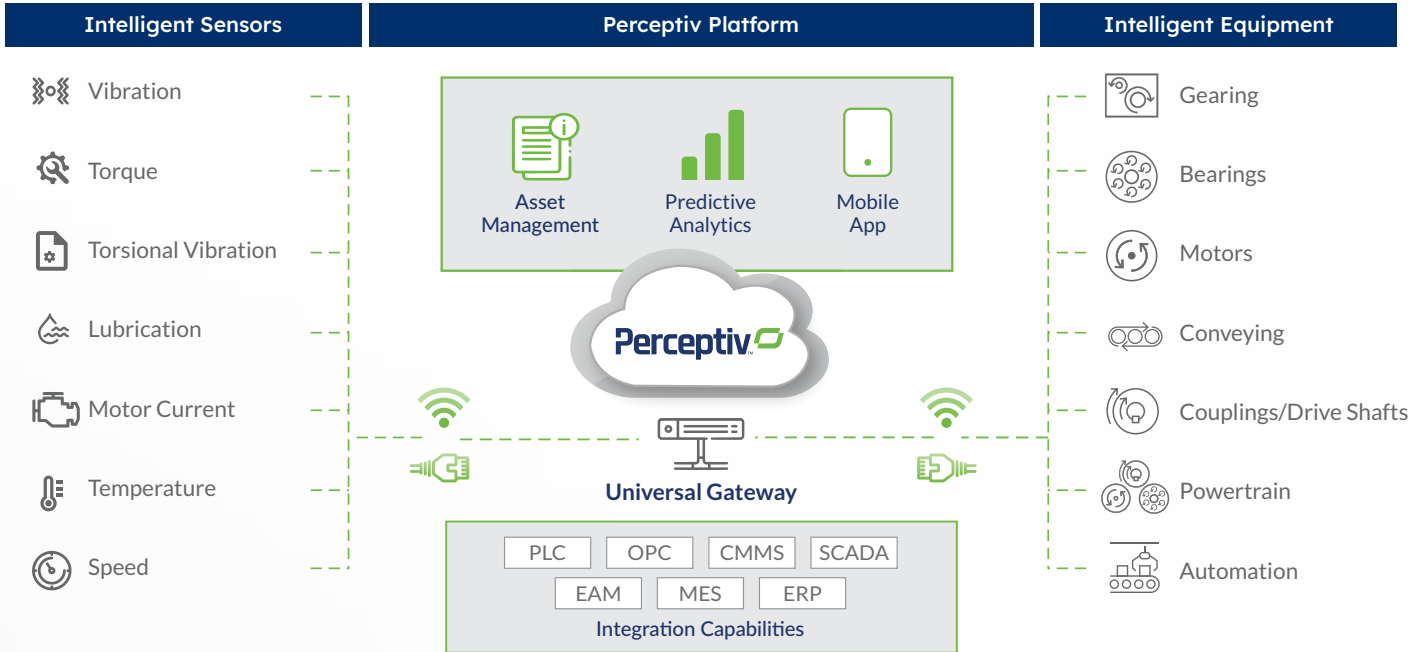
Broad portfolio to detect most common failures:

- Vibration
- Temperature
- Torque
- Torsional Vibration
- Lubrication
- Motor Diagnostics
- Speed



Basic to advanced sensing to meet your asset criticality needs.

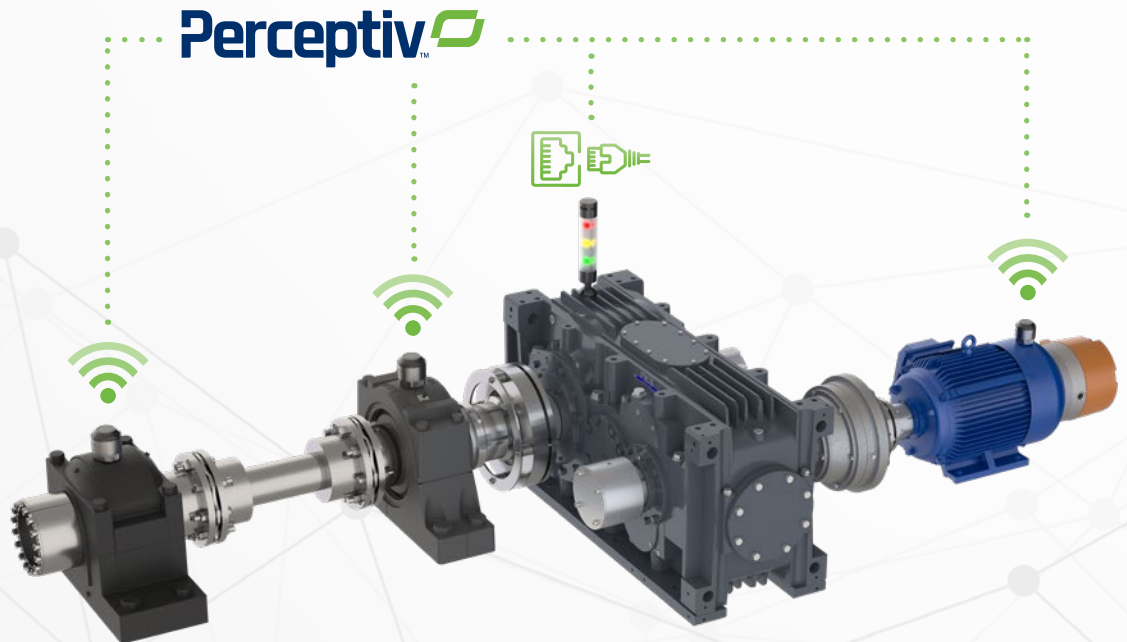
PERCEPTIV™ INTELLIGENT RELIABILITY SOLUTIONS



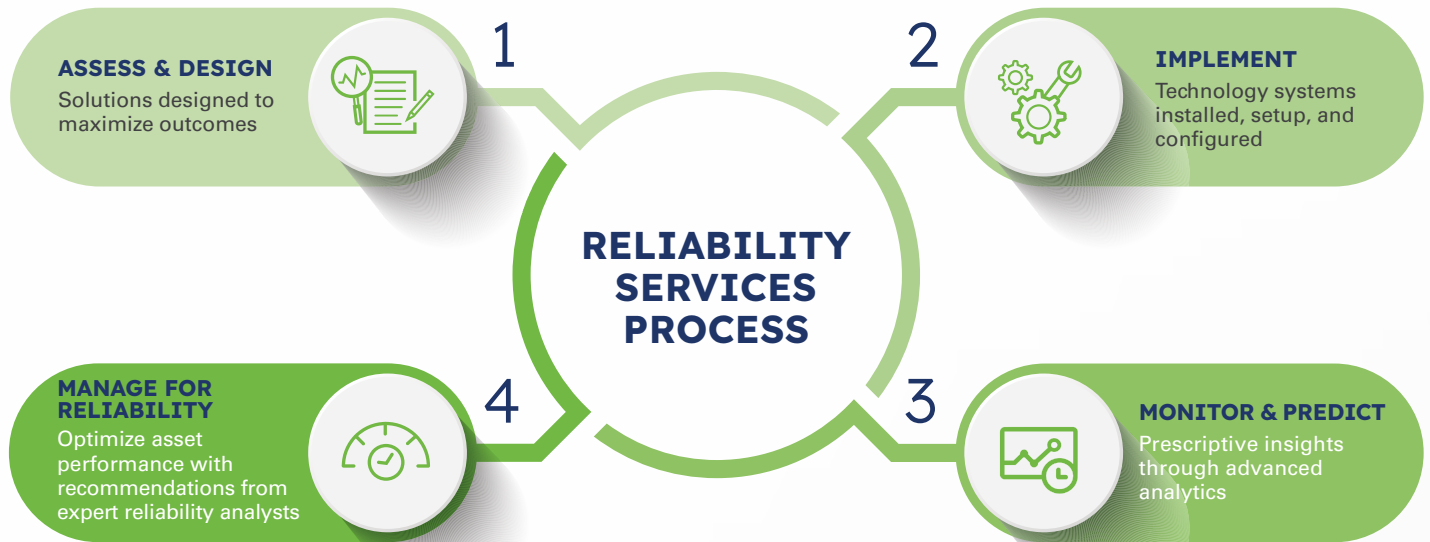
INTELLIGENT POWERTRAIN

Monitor health and optimize performance:

- Lubrication
- Alignment
- Overload
- Cyclical loads
- Vibration
- Torque
- Motor Current
- Temperature
- Speed



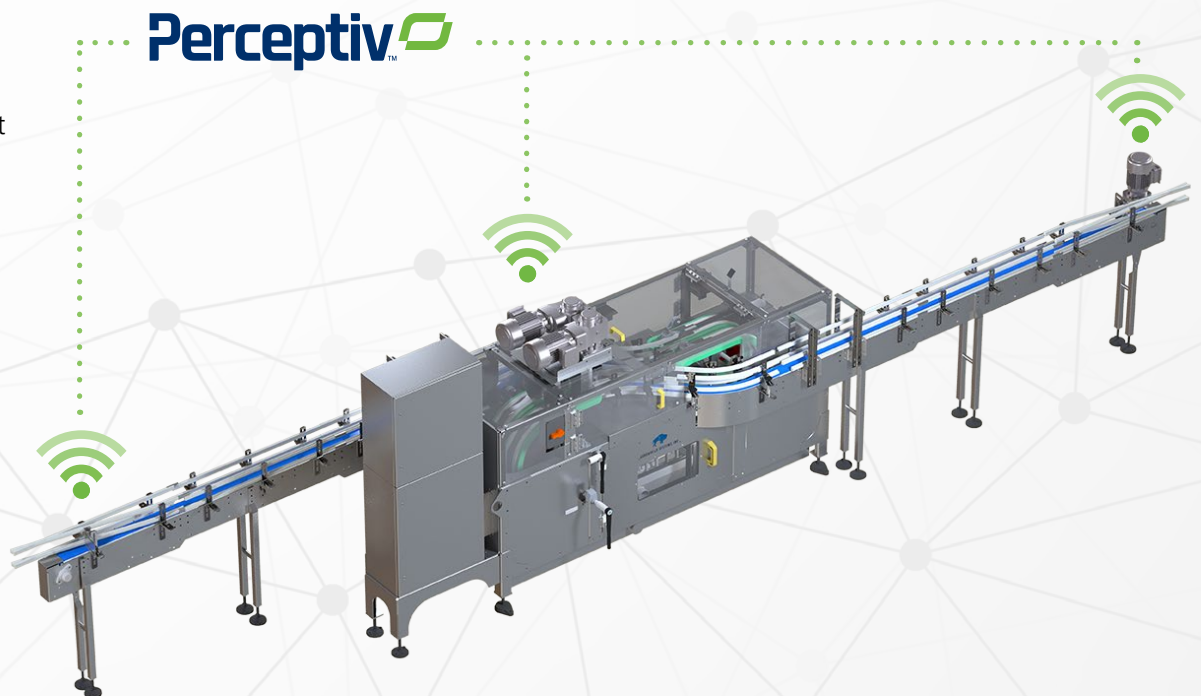
OUR PROCESS



INTELLIGENT AUTOMATION

Maximize uptime and increase efficiency:

- Vibration
- Lubrication
- Alignment
- Motor Current
- Temperature
- Speed



WE PREDICT A MORE RELIABLE TOMORROW

REACH OUT TODAY to learn how you can begin the journey to a more reliable future!

Sales@Perceptiv.com

Scan to Schedule a Meeting:



PERCEPTIV™ CUSTOMERS ENJOY...

IMPROVED

- Asset Uptime
- Profitability
- Regulatory Compliance
- Asset Utilization
- Product Quality
- Staff Productivity

ENHANCED

- Innovation
- Operational Visibility
- Production Scheduling
- Staff Mobility
- Operational Safety
- Sustainability

DECREASED

- Maintenance Costs
- Unplanned Downtime
- Operating & Energy Costs
- Process Inefficiencies



Learn More!

www.regalrexnord.com/brands/perceptiv



Motion Control Solutions Regal Rexnord

Customer Service: 800-626-2120

Technical Service: 800-626-2093

CustomerService.PTSolutions@regalrexnord.com

regalrexnord.com

The proper selection and application of products and components, including assuring that the product is safe for its intended use, are the responsibility of the customer. To view our Application Considerations, please visit <https://www.regalrexnord.com/Application-Considerations>.

To view our Standard Terms and Conditions of Sale, please visit <https://www.regalrexnord.com/Terms-and-Conditions-of-Sale> (which may redirect to other website locations based on product family).

"Regal Rexnord" is not indicative of legal entity. Refer to product purchase documentation for the applicable legal entity.

Regal Rexnord, perceptiv, Rexnord, Link-Belt, Falk, Marathon, Browning, Hub City, Leeson, Jaure, Kop-Flex, Grove and Sealmaster are trademarks of Regal Rexnord Corporation or one of its affiliated companies.

© 2023 Regal Rexnord Corporation, All Rights Reserved. MCB23032E • Form# 10593E

RegalRexnord