



WM Reply

# Purview – 2-day Assessment, Roadmap, and Recommendations

James Mace

# AGENDA

1. The Risks
2. Why Purview?
3. Purview Key Capabilities
4. Assessment, Roadmap, and Recommendations
5. Outcome



# The Risks



Exposure of confidential company data



Everchanging threats and attacks



Data loss and IP theft



Data sprawl and unrestricted growth



Regulatory non-compliance and legal risk



# Why Purview?



Gain visibility into data across your organization



Safeguard and manage sensitive data across its lifecycle, wherever it lives



Govern data seamlessly in new, comprehensive ways



AI-Powered Security and adaptive protection

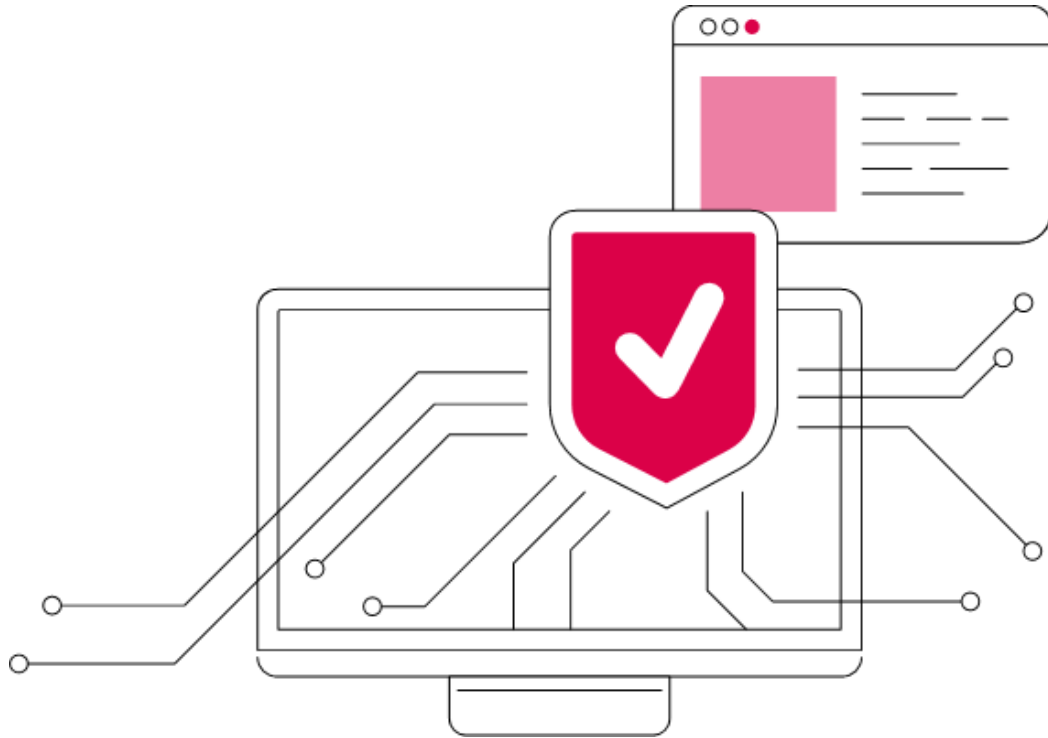


# Purview Key Capabilities

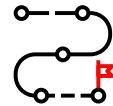
- **Data Discovery & Classification**
  - Identify sensitive information
  - Label data for streamlined oversight
- **Data Lifecycle Management**
  - Automate retention processes
  - Manage archival and disposal
  - Enable eDiscovery cases and holds
- **Information Protection & DLP**
  - Implement encryption
  - Set access controls
  - Establish DLP policies
- **AI-Driven Insights**
  - Real-time monitoring



# Purview Assessment, Roadmap and Recommendations



**High level assessment of environment**



**High level roadmap**



**Report and recommendations**



# Outcome

## Assessment

- Review of current configuration of Purview
- Review of current security configuration

## Roadmap

- Review compliance objectives
- Discuss risk of litigation and legal action

## Recommendations

- Recommendations and approach for mitigating risk



# Thank You

**AUCKLAND**

Level 1/ 28  
Customs Street  
East, Auckland,  
New Zealand 1010

**CHESTER**

One City Place  
Queen's Rd  
Chester CH1 3BQ

**CHICAGO**

71 South Wacker  
Drive, Suite 3090  
Chicago, IL 60606

**HAMBURG**

Palmaille 33,  
22767 Hamburg,  
Germany

**KATOWICE**

Wrocławska 54, 40 -  
217 Katowice,  
Poland

**LONDON**

160 Victoria St  
Nova South  
London SW1E  
5LB

**MANCHESTER**

1st Floor, Cubo The  
Lincoln Building  
Brazennose St,  
Manchester M2 5AD

**TURIN**

C.so Francia, 110  
10143 Turin  
Italy