



# Lotus Notes to Power Platform

EN

DE

Migrate Database • Migrate Data • Upgrade Business Logic

Migrate from Lotus Notes to the Power Platform in record time with our templates and established approach! 

Make digitization simple!

# Notes Migration with Reply

**SEEKING  
FOR INNOVATION?**



IBM Lotus Notes was for many years the first choice for creating business applications – from small to large – including an easily modifiable graphical interface. A rights and roles model is also included. Today, however, scaling is a mission-critical issue - along with high availability and collaboration features. Take the plunge and switch to Microsoft Power Platform - with best practices from Reply and our partners.

- Migration at the **speed of light** through the use of Power Accelerate – our partner framework for fully integrated migrations to the Microsoft Power Platform incl. data structures, data sets, intelligent app creation + more
- Transfer of data structures through **import templates and scripts** created by us with simultaneous **adoption of the existing rights and role model** – scalable and perfectly customizable
- With the Microsoft Power Platform, you get a **consistent data model, real-time data, accurate and pixel-perfect renderings**, and with Power Fx, a low-code programming language for everyone.
- Take the **chance to redesign**: throw out complex administration and outdated interfaces and embrace the modern low-code world – with 700+ predefined interfaces for **third party vendors** and collaboration options.
- Efforts can be flexibly shared** between you and Reply because through our accompanying training concept (experienced and certified trainers) you can also quickly lend a hand (optional)
- We are happy to **share our knowledge** and train Citizen Developers so that you can independently develop and manage your apps and workflows – we then support you with the technically complex tasks

**UNLEASH  
THE POWER NOW!**



**3×**

**faster migrations**

**65%**

**less effort**

Are you eager to innovate while reducing complexity? We are pleased to introduce you to the Microsoft Power Platform! Through enterprise-grade technology and the simultaneous use of the low-code philosophy, you can digitize and automate your business processes in record time.



MICROSOFT POWER PLATFORM

# Drive Digitalization



Multiple versions of Excel sheets



Consolidated Excel sheets



Massive Excel databases



No historization automatism



Missing interfaces



Flat data, no normalization



No role model



No (responsive) user interface



Old fashioned UI



Disadvantageous overview



Inconsistent structured databases and apps



Missing overall search function



Suboptimal search algorithms



Suboptimal search result sorting



Laborious content update



Difficulties with scaling



Limitations with data types



No modern cloud connection



Unprofessional detours for achieving results



No workflow automation



Limited reporting capabilities



Paper is not searchable



Once gone, always gone



Difficulty with historization, long-term retention



No collaboration features



Difficult to see connections



# Typical & Exemplary Use Cases



## Personal Productivity

- Automate personal workflows, e.g. in Outlook, SharePoint, Microsoft Teams and Office 365
- Increase your own productivity with 750+ connectors



## Sales & Field Service

- Appointment Tracking
- Route planning
- AI-powered lead nurturing
- Sales coordination
- Site inspection



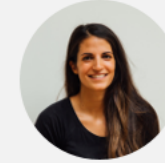
## IT Department

- Cross-system automatic license and group assignments
- Data consolidations on a central platform
- Helpdesk organization & support desk



## Personnel and HR

- Skill Matrix
- Training and event booking
- Workplace booking and Modern Work
- Onboarding and Offboarding
- Employee surveys



## Culture & Innovations

- Innovation and Idea Management
- Lessons Learnt App
- Decision Management
- Knowledge Management



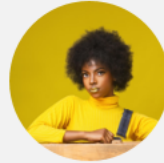
## Dispatching

- Deployment planning
- Dashboards
- Optimization of appointment management



## Procurement & Logistics

- Purchasing and logistics automation
- Approval processes and cross-departmental automations
- Automation and connection of SAP and CRM (overcoming silos)
- Portfolio and inventory management



## Marketing

- Automate marketing lists
- Requirements management
- Marketing campaigns and feedback
- Task coordination



## Customer Service

- Status queries
- Feedback portal
- Self-service customer dashboards
- Automatic email reports



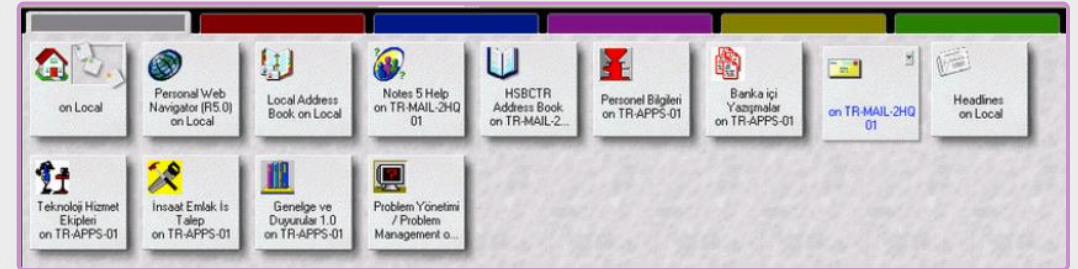
## Sustainability

- Emission measurements and management
- Reporting and dashboards
- Calculations and data specification



# Upgrade Your Experience

- **No guarantee of consistent data** – Possible replication conflicts due to distributed storage models
- **No real-time data** – Applications that rely on a centrally available, immediately updated data source cannot be realized
- **Incorrect rendering of text** – Proprietary format for storing rich text, which often yields unsatisfactory results when converting HTML
- **Old web development** – Tools and frameworks for web development massively outdated
- **Lack of integration with third-party vendors** – Seamless integration with Office products is not possible



	Art	Bezeichnung	Nr.	Ausgabe
▼		<b>Kreditabteilung</b>		
▶		<b>Bürgschaft</b>		
▼		<b>Ergänzung</b>		
☺	intern	Belehrung über das Widerrufsrecht	9012 SG01	01.03.2011
▼		<b>Grundpfandrechte</b>		
☺	intern	Lichtbild Beleihungsobjekt	9027 SG01	01.04.2010
▼		<b>Lebensversicherung</b>		
☺	intern	Empfangsbestätigung Versicherungspolice	9016 SG01	01.12.2011
▼		<b>Sicherungsübereignung</b>		
☺	intern	Empfangsbestätigung Kfz.-Brief	9006 SG01	01.03.2010
▶		<b>Standard</b>		
▶		<b>Kreditberatung</b>		
▶		<b>Marketing</b>		
▼		<b>Markt</b>		
▶		<b>Aktiv</b>		
▶		<b>Dienstleistung/Sonstiges</b>		
▼		<b>Kontoführung</b>		

Replace databases and forms with a modern platform!  
Migrate in record time with our templates.  
Citizen and Pro Developer Training included! 🚀



# Upgrade Your Experience

Companies Directory - All Companies - IBM Lotus Notes

File Edit View Create Actions Tools Window Help

Companies Directory - All Companies (Untitled) Contact Company Company

Companies Directory

- New Company
- New Product
- Companies By Name
- Contacts By Company
- Contacts By Name
- All Docs
- Inspection
- Products
- Exit

Company	ID Number	Phone	Business	Status	Type	Contact Name	Product Name	Product Code	Author	User	InspectionDate
4623001D5278612 ACME FINANCE	346455656	+5492232323	Finance	Active	Medium-sized				CN=UIForms Admin		
00F18DF3A28E00:ACME FINANCE							test product	prod1		CN=UIForms Admin	08/23/2021 07:35:5
0E3D102CEB9F35 ACME FINANCE										CN=UIForms Admin	09/30/2021 06:45:0
9C0A06458FA29F ACME FINANCE										CN=UIForms Admin	09/30/2021 06:54:0
748783E76185D66 ACME FINANCE											
D00FCDBA7A5CAIACME FINANCE		4646465				Melinda Taylor					
E60D85C8E81F3 ACME FINANCE		5345345345				Bert				CN=UIForms Admin	
9A3E2C94D15786 ACME FINANCE		568787866				Peter Johnson				CN=UIForms Admin	
BF44F938E38FA ACME FINANCE		4545454545				Emilio Roqueta				CN=UIForms Admin	
ACT7AE8E28FEECI:MICROSOFT CORPORATION						John Doe				CN=UIForms Admin	
903B7BBA7A0D2:MICROSOFT CORPORATION	44443434		Technology	Active	Large						
BB325D58BE96A1:MICROSOFT CORPORATION							Office 365	O365			08/23/2021
2702E318C2D368:MICROSOFT CORPORATION										CN=UIForms Admin	08/23/2021 07:36:2
35C29A0374146:MICROSOFT CORPORATION										CN=UIForms Admin	08/22/2021
7CCE19B5A6D3A:MICROSOFT CORPORATION							Coca Cola 50ml	C2			
D9EF873A35191:MICROSOFT CORPORATION							Coca Cola 33ml	CC1			
73410F3575B9CC1:New Company	123				Medium-sized					CN=UIForms Admin	
88C1A0FE77C2EA											
82248B1A132E91											
A80C301BE763F01											
38978CFA3481E21											
3873800B874B78B											
7FC2B2A40500E9											
8FD3A3D738883C											
C3C24671D25CF0											

Old fashioned design

Complex Client-Server-administration

Desktop only

Not Integrated to Microsoft office ecosystem

No prebuild interfaces

No collaboration features

Power Apps new Lotus Notes proj 18 jan

Show Chart + New Delete Refresh Email a Link Flow Run Report Excel Templates Export to Excel Import from Excel Create view

Active Company

Search this view

Name	InternalIDCompany	IDNumber	Phone	Address	Business
ACME FINANCE	4623001D5278612903258721004...	346,455,656	+5492232323	Lexington Av 1500 New York City	Finance
MICROSOFT CORPORATION55	903B7BBA7A0DA580325872200...	44,443,434		One Was Microoft, Redmond	Technology
New Company 555	73410F3575B9CC828725872D006...	123			

Home Recent Pinned new Lotus Notes proj 18 jan Inspection Company Contact Products

Responsive Design

Low-Code Approach

Accessible from anywhere

Integrated to Microsoft ecosystem

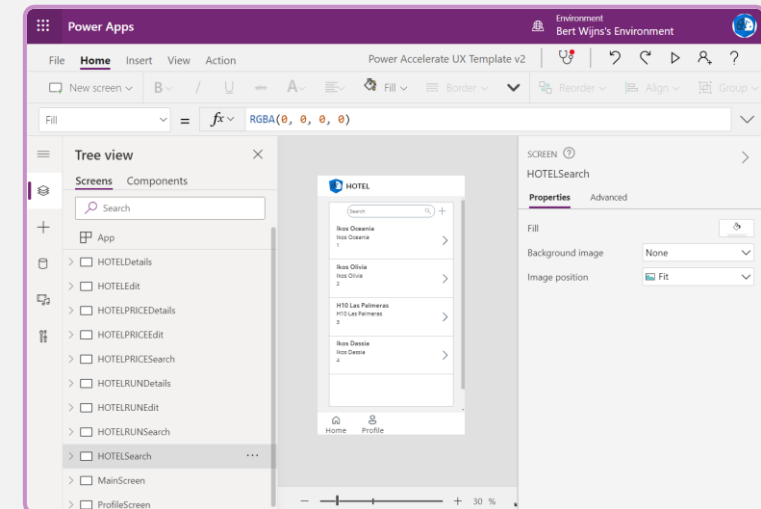
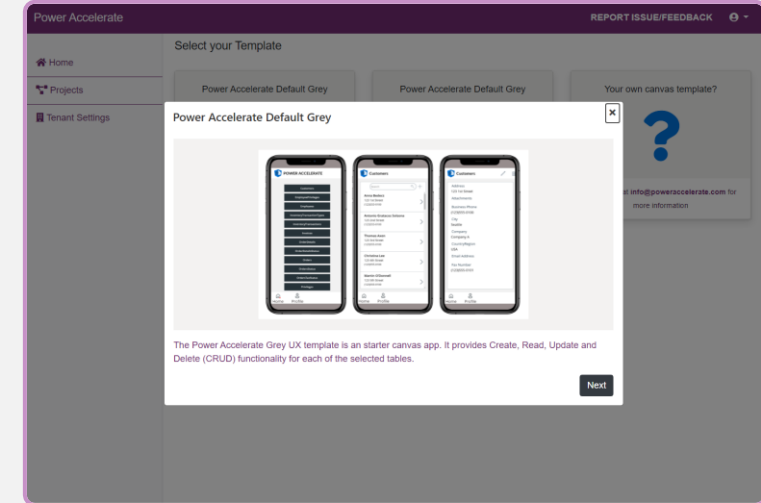
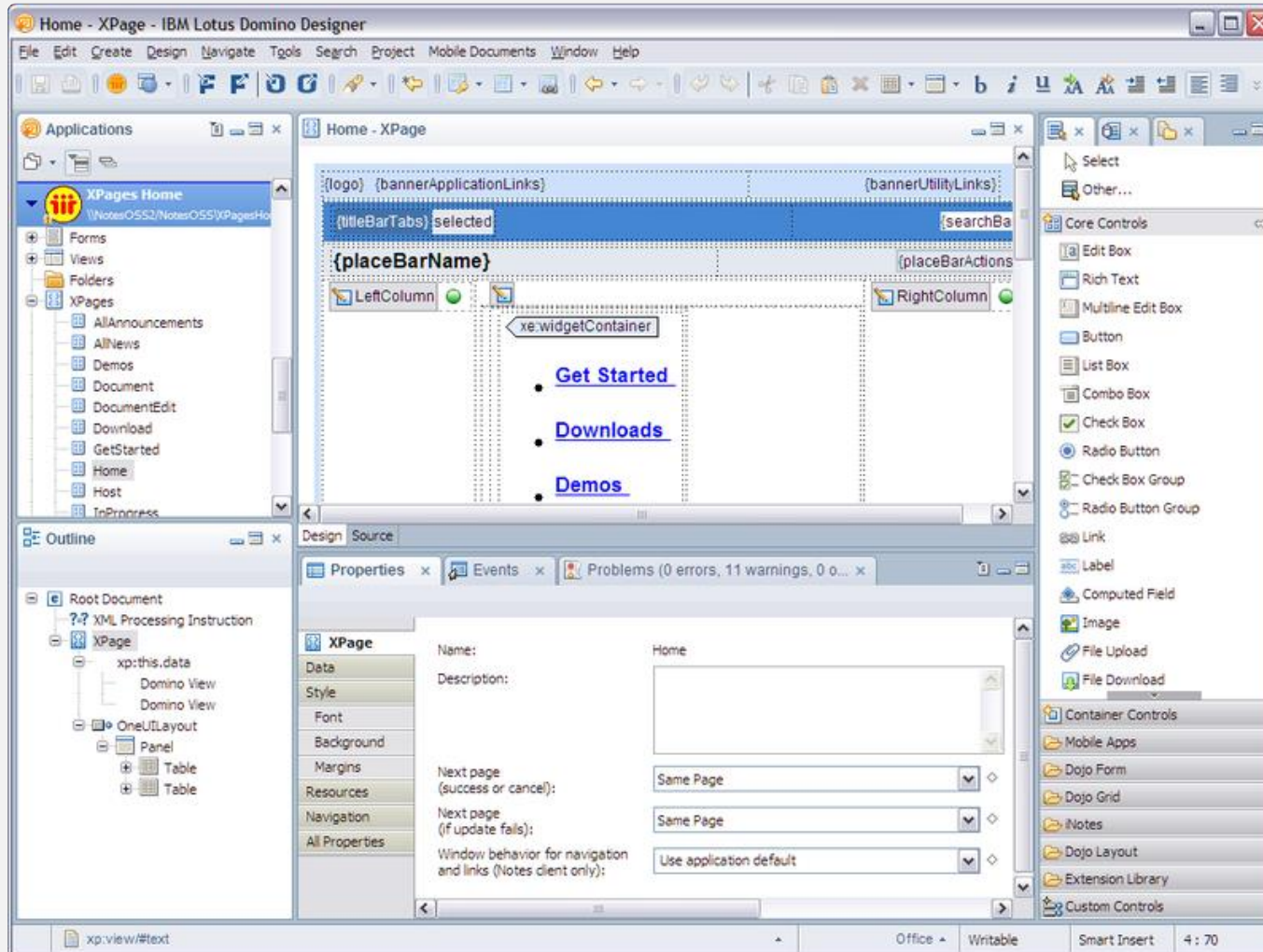
700+ pre-built interfaces available

Collaboration features





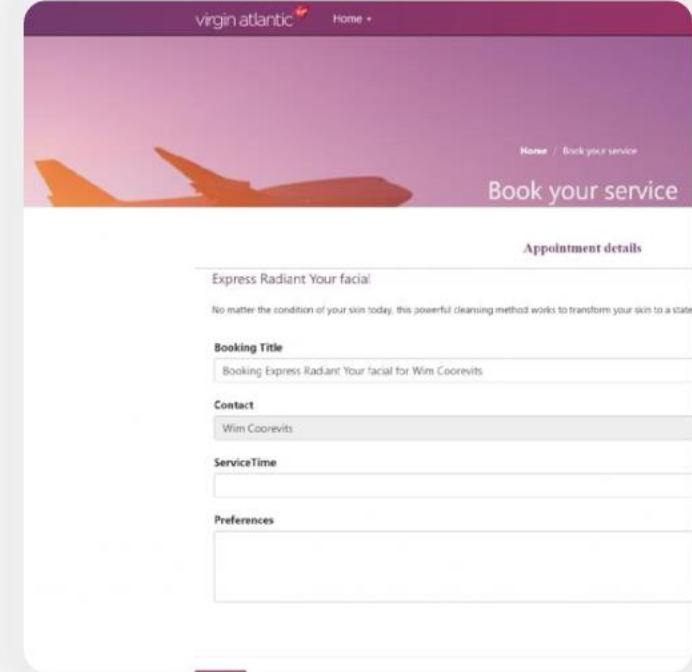
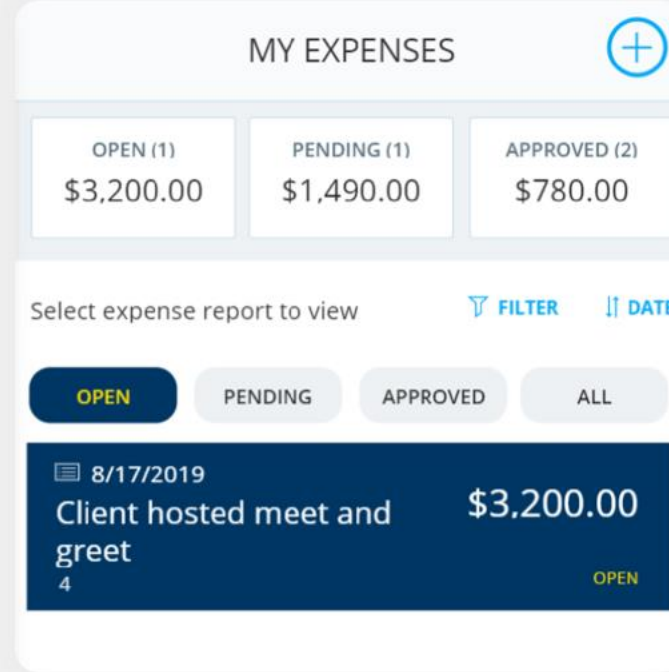
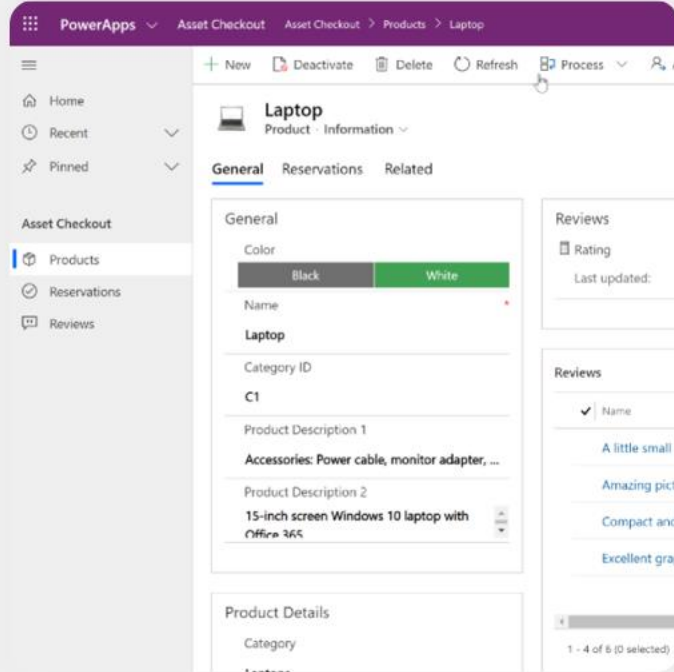
# Domino Designer vs. Canvas App Designer



# Apps & Pages

Internal target group

External target group



## Model-Driven Apps

Standardized apps that are based on Dataverse and bring a unified framework with them (focus on data model)

## Canvas Apps

Freely designable apps with a wide range of integration scenarios and connection options (focus on user experience)

## Power Pages

Website with access to data stored in Dataverse for the creation of a customer and partner portal





# Lotus Notes Migration Procedure

## 1 Analysis

- **You show us your Notes system** including data structures, processes and groups of people (roles).
- We identify necessary steps to migrate your Notes application to the Microsoft Power Platform in the best possible way.

## 2 Migration

- Migration of **data structures** through templates provided by us
- Migration of **databases** through templates provided by us
- Assumption of **rights and roles**
- Reduction of tables and specially written methods to standard functions
- Joint creation of **UI/UX** as well as extensions through business rules, plugins, Power Automate, ...

## 3 Setup

- **Together**, we will set up the Microsoft Power Platform according to your needs.
- We create an individual **rights and role model** based on Lotus Notes.
- We configure the **governance** according to your ideas and contribute our expertise.
- We are also happy to advise you on **licenses**.
- **Congratulations** – that's how fast you've made it and you're live! 🎉



# Fast Migrations with Reply's Methodology

3x

faster migrations

65%

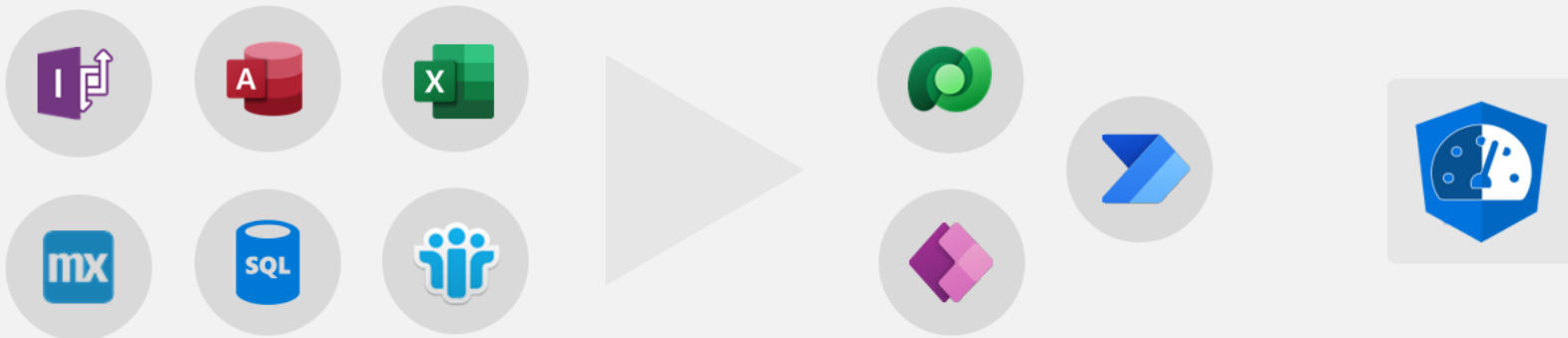
less effort

## Reply's Methodology

Reply's approach enables rapid migration of legacy systems to the innovative Microsoft Power Platform, where you can individually expand, scale and digitize your processes. Whether you are coming from Excel, Access, SQL, IBM Lotus Notes or other databases, our migration templates ensure reliable migrations of tables, fields and data. As an accompanying measure, we recommend the professional anchoring of the Microsoft Power Platform in the company.

## Power Accelerate

Our partnership with Power Accelerate enables rapid migration of data structures and data to the Microsoft Power Platform - securely, customizable, and following current best practices.



# Power Accelerate – Fast & Smart Migration



Support for Microsoft Excel, Access, SQL, InfoPath, Mendix, Lotus Notes



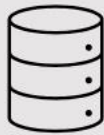
Microsoft Dataverse data model creation incl. tables and fields



Generation of Model-Driven Apps incl. forms, views and sitemap



Security model creation



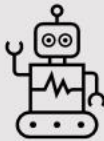
Data migration incl. relational data



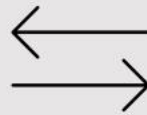
Canvas App generation from a provided template



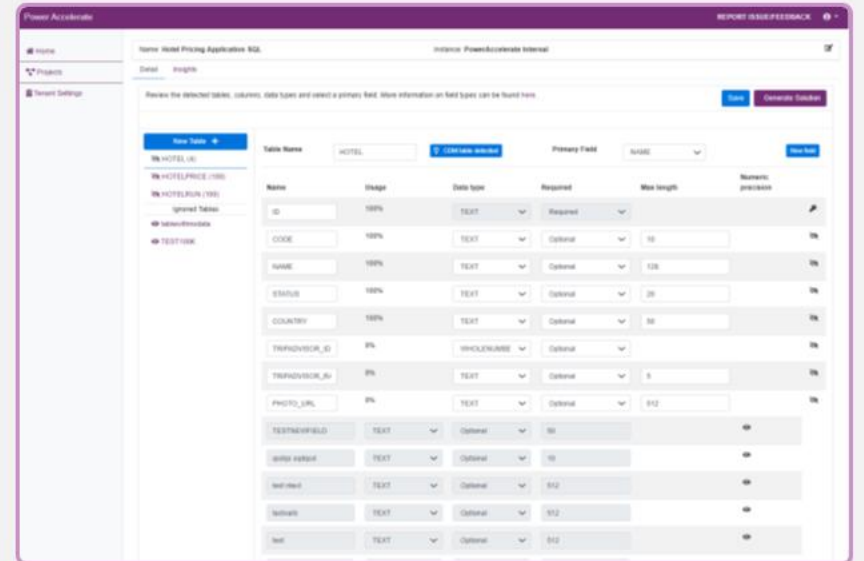
Microsoft Common Data Model (CDM) matching



Smart data model and field type detection



Data transformation when migrating to Power Platform



Graphical user interface with high security standards.



POWER ACCELERATE



# Migration decision tree



# Power Platform – More than Notes online!

- Effectively prevent the emergence of **shadow IT!**
- Standardize your **data storage** and processes across departments in a central business data layer (Dataverse).
- Use **collaboration** features to collaborate in the best possible way.
- Use different **rights and roles** to adjust editing and visibility.
- Employees use their Azure AD account for **authentication**. Don't remember Excel passwords anymore.
- Work on an **encrypted**, secure and established data layer.
- Use different **data types** and link different data together.



- Gain important **insights** through Power BI reports.
- Use **synergies** of the Power Platform.



- **Automate** across systems.
- **Connect** Microsoft Teams, Outlook, SharePoint, and **APIs**.










- Enrich data with **business logic** and a **rights and role model**.
- Powerful **visualizations** and diagrams.








- Create **different types** of apps.
- Expose your **data to external parties**, e.g. in portals for customers or suppliers.



# Microsoft Cloud

-  **Microsoft 365**  
Office, Teams, SharePoint, Outlook
-  **LinkedIn**  
B2B Social Network, Insights
-  **Dynamics 365**  
CRM, ERP
-  **GitHub**  
Open-Source Code Management
-  **Power Platform**  
Apps, Flows, Pages, RPA, Automation, Bots, BI, AI
-  **Microsoft Azure**  
Cloud Services, AI, ML, IoT, Data Lake, ...
-  **Microsoft Cyber Security**  
Identity, Access Management, Compliance

*Our industry does not respect tradition. It only respects innovation & trust.*

- Power BI** 
- Power Automate** 
- Power Pages** 
- Power Apps** 
- Power Virtual Agents** 



# Microsoft Power Platform



## Power BI

BUSINESS ANALYTICS



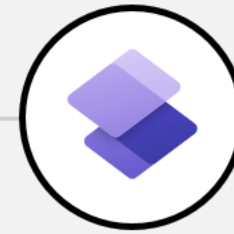
## Power Apps

APPLICATION DEVELOPMENT



## Power Automate

PROCESS AUTOMATION



## Power Pages

PORTALS & COLLABORATION



## Power Virtual Agents

INTELLIGENT CHATBOTS



Dataverse



Data Connectors



AI Builder



Power Fx



Managed Environments

The Microsoft Power Platform is the no-code and low-code platform from Microsoft, with which innovative scenarios can be implemented agilely and quickly. Numerous internal and external connectivity options round off the platform.



- MODULAR DEVELOPMENT**  
High agility and transparency
- LOW-CODE APPROACH**  
Cost reduction
- DIGITIZATION AND HARMONIZATION**  
Productivity increase
- TOOLBOX**  
Extensibility and adaptability
- BUSINESS VIEW CORRESPONDS TO DEVELOPER VIEW**  
User interface equals developer view resulting in equal understanding of IT and business departments
- SOFTWARE AS A SERVICE (SAAS)**  
Reduction of maintenance costs
- DEMOCRATIZATION**  
Combating the shortage of IT specialists and relieving the burden on the company's internal IT department
- AZURE ACTIVE DIRECTORY (AAD)**  
Integration into existing user identity administration

# Chances

Take advantage of the low-code approach with Microsoft Power Platform

# What are you waiting for?

- Do you want to **evaluate** a project?
- How do I **digitize and automate my processes** with the Microsoft Power Platform?
- Do you need **best practices** and hands-on support from our motivated experts?
- Do you have questions about **opportunities** with Microsoft Power Platform?
- How do I organize **governance and compliance**?
- What makes the **Power Platform particularly fast** to work with?
- How does **democratization** play into your hands and how can I start with **envisioning** and business value assessments?

BOOK AN APPOINTMENT



## Lennart Wörmer

Manager and responsible for the Microsoft Power Platform business within Reply in Germany

+49 152 54934257  
l.woermer@reply.de



## Lea Michel

Your first point of contact for Lotus Notes migrations to Power Apps / Power Platform

+49 151 19567093  
l.michel@reply.de



Advanced Specialization  
Low-Code Application Development

