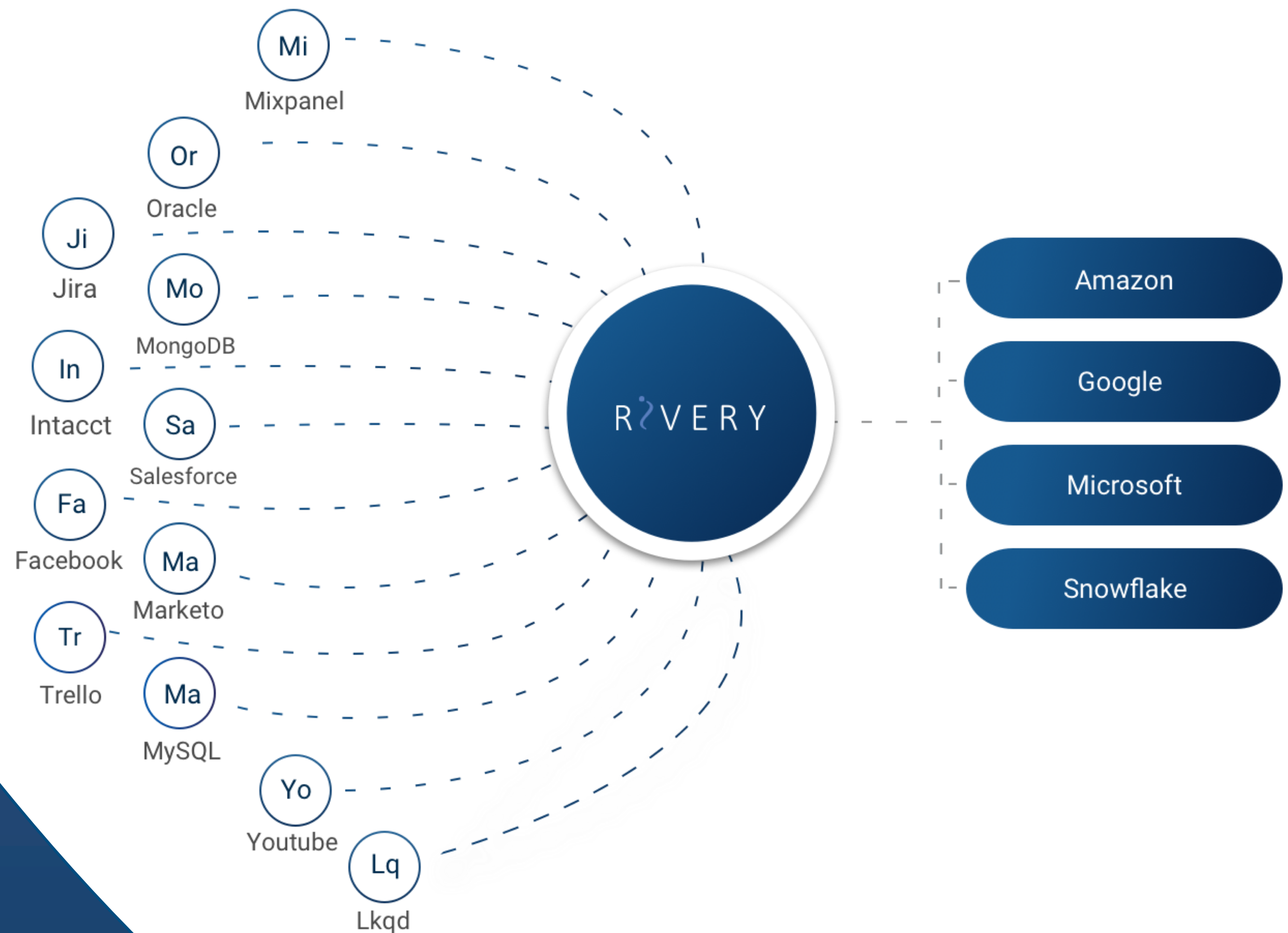


The background consists of several overlapping, curved, organic shapes in various shades of blue, ranging from a deep navy blue to a light sky blue. The shapes are layered, creating a sense of depth and movement. The word "Rivery" is centered in the middle of the composition.

Rivery

What is Rivery?

Rivery enables companies to manage & build their cloud analytics platform by streaming their data in an easy, fast & controlled way.



API Support

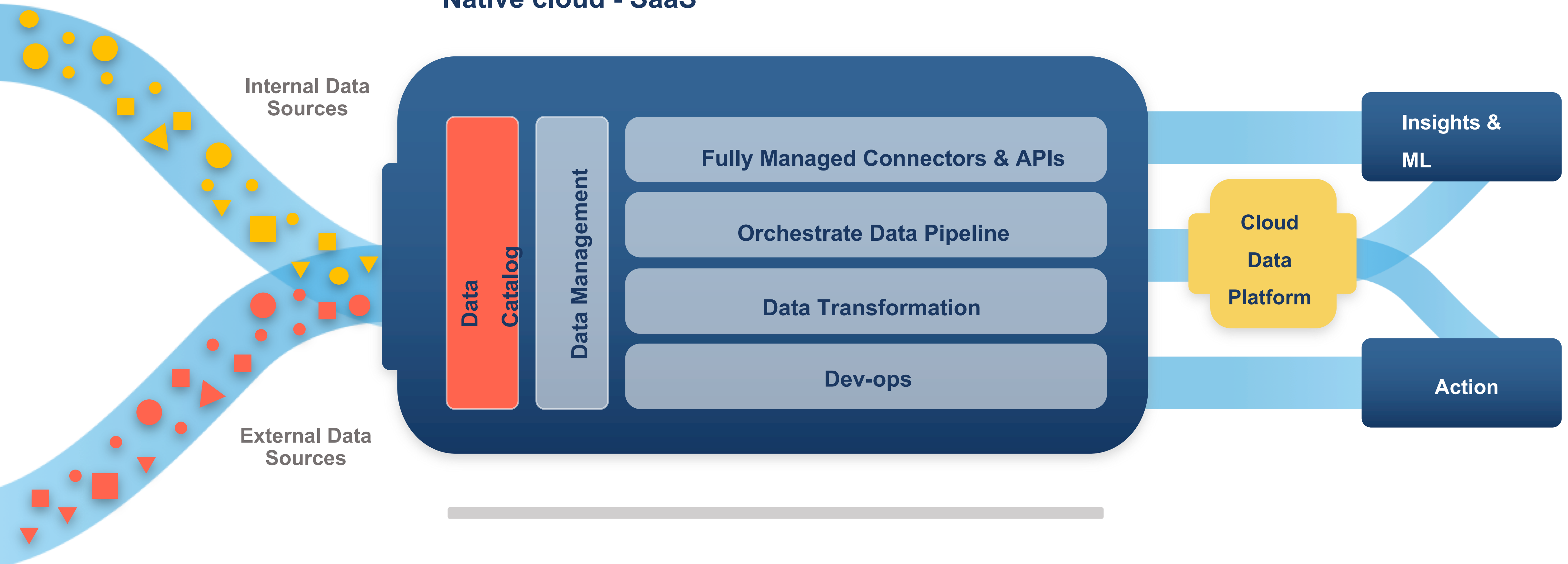
Data transformations

Serverless, fully managed data pipeline

The Product: AI and ML Enabler

CONNECT ▶ INTEGRATE ▶ PREPARE ▶ ANALYSE ▶ ACT

Native cloud - SaaS



Modern Cloud Data Architecture

OLD WORLD

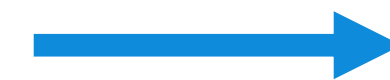
ETL - Extract, Transform & Load

Support Internal sources (Mainly DBs)

Local Installation

Software License & Services

Data Management For Technical Audience



NEW WORLD

ELT - Extract, Load & Transform

Support All Sources (DBs, APIs, CDC, Semi-Structure, Streaming, more...)

Fully Managed (SaaS) in Multi-Cloud Environment

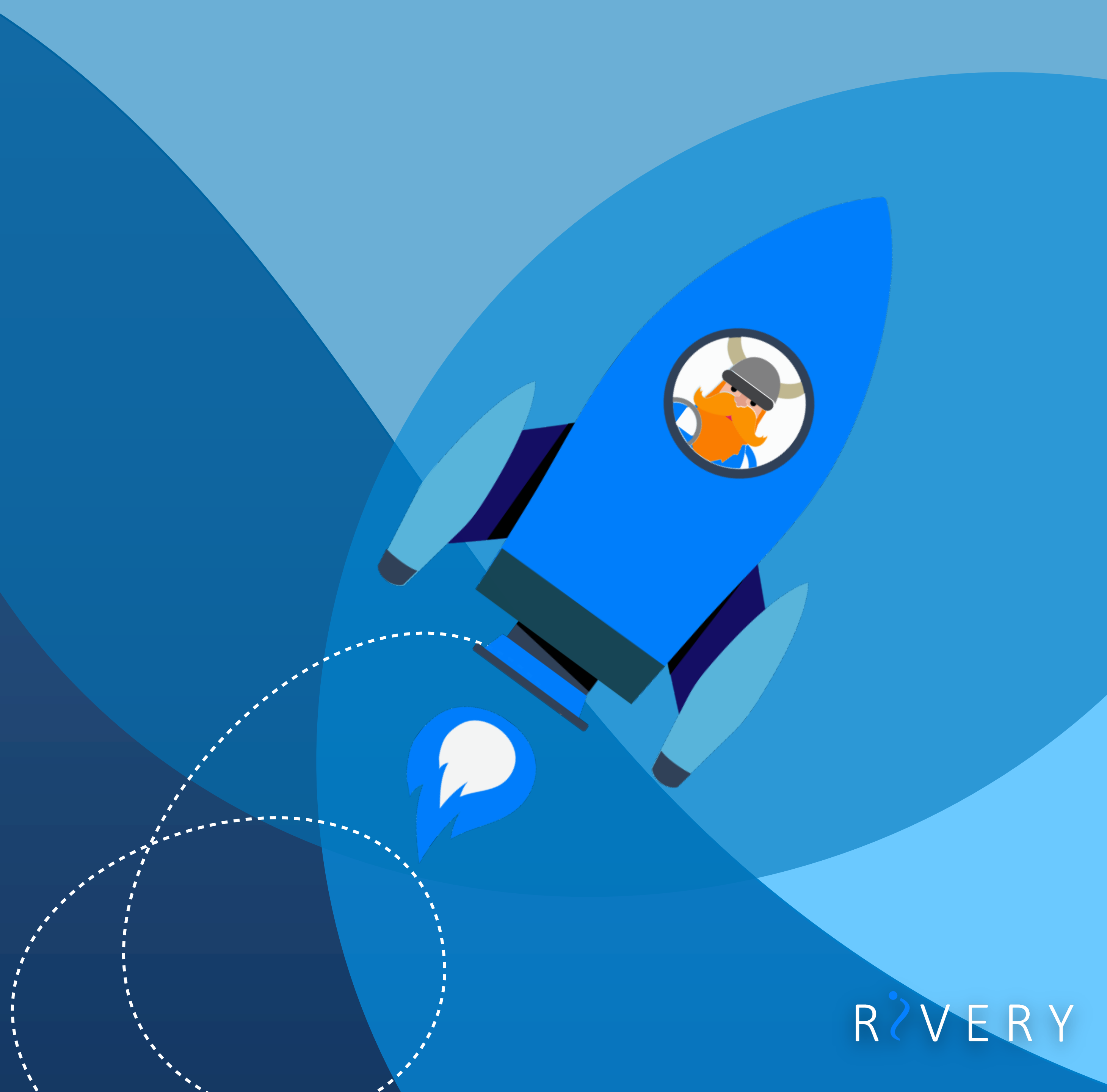
Consumption base cost structure

Augmented Data Management



Speed

Shortens Time-To-Cloud
from months to hours.

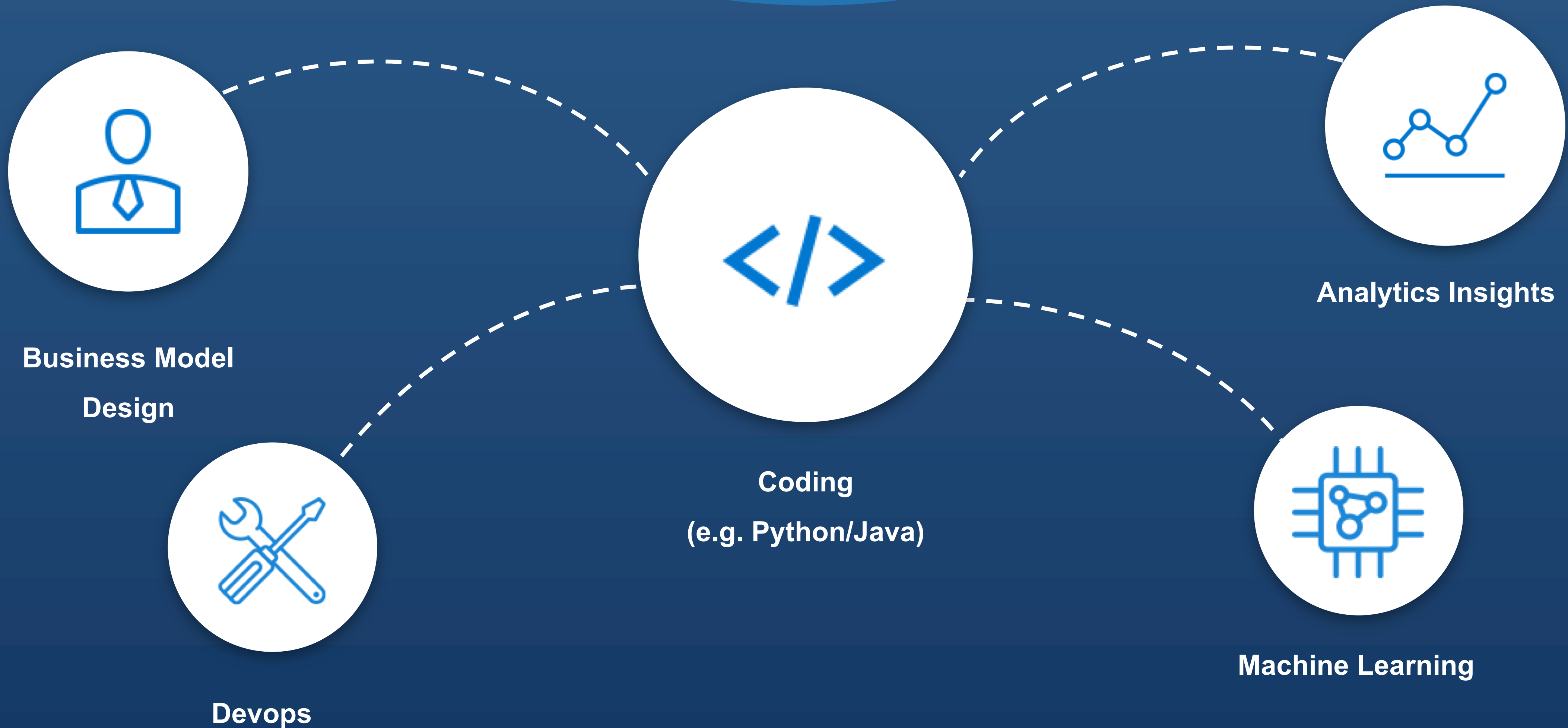




Flexibility

Development powerhouse with dedicated framework allowing us to add any new source requested by clients within 7-21 days.

A Typical Data Architecture



Using Rivery



**Business Model
Design**



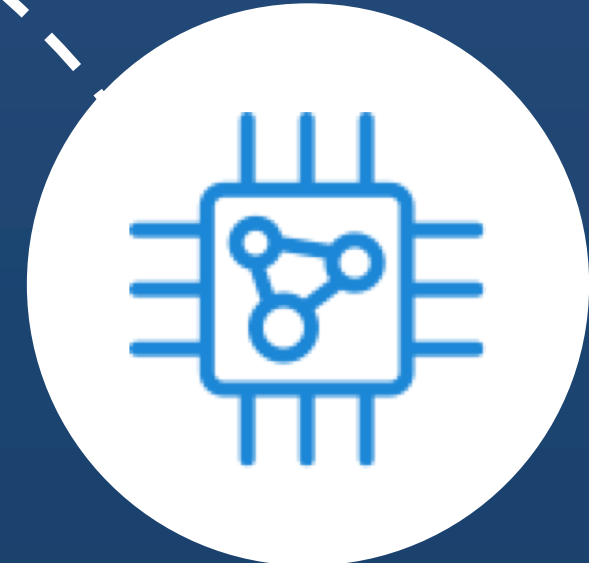
NO DEVOPS!



NO CODING!



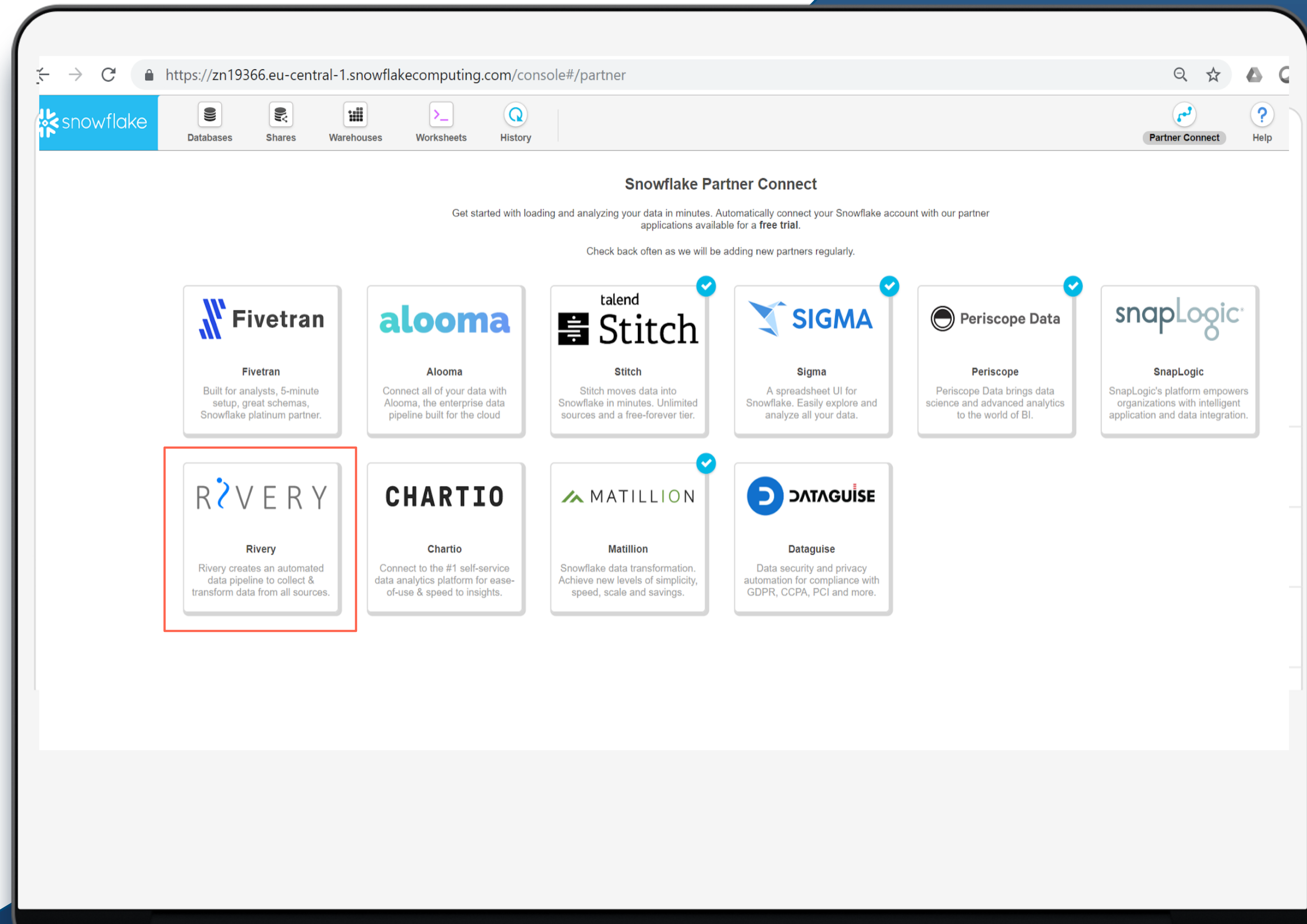
Analytics Insights



Machine Learning

Embedded in Snowflake connect

Rivery is proud to be positioned
alongside other market leaders in
Snowflake's preferred partners page
(1 Click integration)





Rivery's Key Strengths

01

Marketing Landscape –
Ingest & Transform

02

Rich connectivity to
Social media

03

Best in breed Netsuite
integration

04

On-demand program
to add APIs

05

SaaS DBs compatibility
Snowflake / BQ / Redshift, Azure

06

Support & customer
satisfaction

07

Scale-out capabilities - the
technology behind Rivery

08

Cost effective pricing –
Unlimited APIs access

Let's demo !



The screenshot displays the R2VERY website interface. At the top, a navigation menu includes the R2VERY logo and links for Platform, Solutions, Integrations, Case Studies, and Resources. The main content area features a diagram where data from Appsflyer and MySQL is processed by R2VERY and then sent to Snowflake, which is connected to a data visualization icon. A yellow 'Start Now' button is visible on the right side. The footer contains logos for AWS, Google Cloud Platform, and Microsoft Azure.