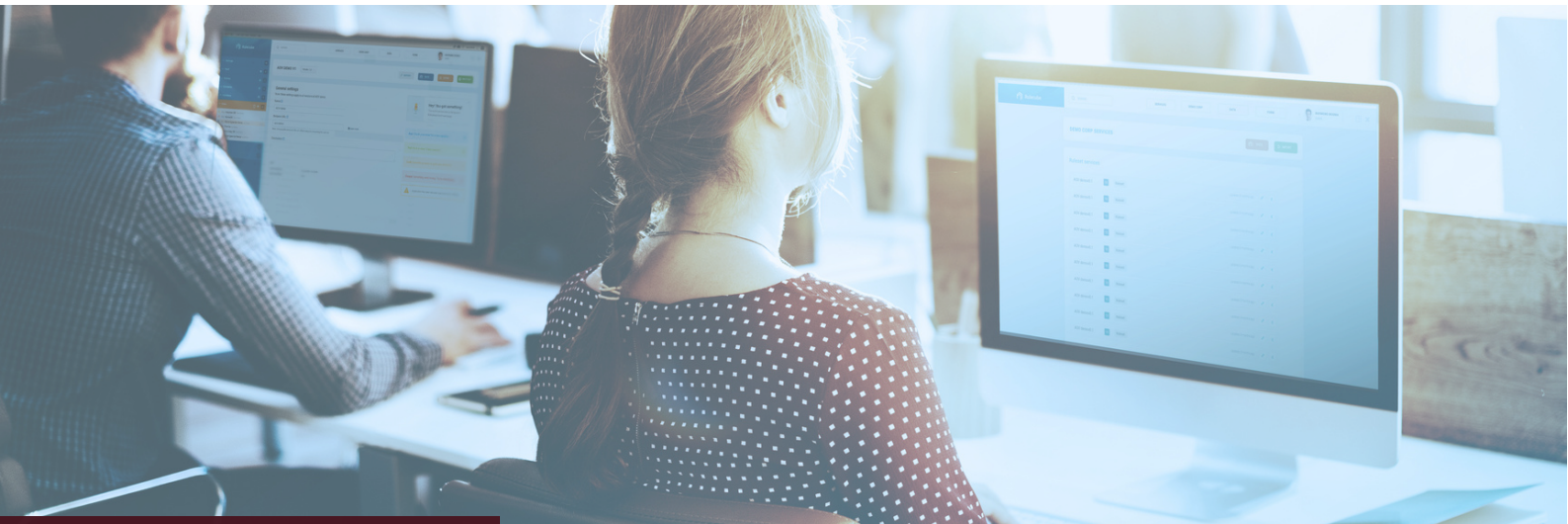


## The low code api builder and business rule engine

Create and maintain APIs within seconds. Run multiple API versions side-by-side, so integration of third parties do not affect your development pace. Clear separation of concern between business and IT. That's how we like our software.



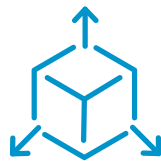
### Agility at its best

Our mission is to enable companies to innovate by creating value using their unique business knowledge.

Every feature in our product offering is developed with our mission in mind. Fully focused on this one task, we help both the business and IT to become truly agile.

Stop making excuses for slow business innovation. Start redefining your business today.

### Here is how we improve your agility



#### Cubed extensibility

No need to re-invent the wheel. Easily re-use what you've done before. Inherit rulesets, use templates and libraries.



#### Model driven design

Drag and drop. It's that simple to integrate complex data models and rules. Start defining business rules in seconds. And create APIs on the fly.



#### built-in profiler

Our built-in profiler shows exactly where your ruleset needs attention. This way you can be faster and more efficient.

# The Rulecube components



## Documentation, always

Your rulesets and API are automatically documented. No more tedious documenting.



## API versioning

All of your API versions run side-by-side. Clients or suppliers can integrate at their own pace. IT changes won't hold you back in your innovation anymore.



## Ruleset versioning

New day, new rules. But you do want to keep track of which rules applied at what time. Each Ruleset revision is tracked automatically. Nothing is lost..



## No deployment

We're SAAS. You're always on. Always.



## Test driven design

Create test cases and let us keep track of the integrity of your rules. Any mistake will be visible immediately.



## Undo at any time

Don't like the results of your new business rules? Just hit undo. The source versioning and change history will ensure nothing is lost.



## Audits included

Record every step of your model execution. Reviewing what happened is as easy as hitting playback, down to every last detail.



## Create a feedback loop

Use your rules to create new data and feed this back to your dataset. Train your Artificial Intelligence with your newly gathered data and open up a whole new world. Integrating AI in your business processes has never been easier.

# Our Tech Stack



Front end: **Vue-JS**



API: **.Net Core**



Back-end: **NodeJS**



AI: **Tensorflow**



Database: **MongoDB**



Hosting: **MS Azure**

## About Rulecube

We develop Enterprise solutions and Knowledge management systems for more than 20 years now. We believe that many existing systems are way too complex. Our experience and beliefs combined, result in a new and refreshing way to turn your company's knowledge into ready-to-use IT building blocks.

+31 (0)6 53 67 43 19

contact@rulecube.com

rulecube.com

