

# IS YOUR SCHOOL READY FOR THE FUTURE?

Move to Sentral in the Cloud today! Secure, trusted and compliant.



Compliant with:



Education

Powered by:



Microsoft  
Azure

[sentral.com.au](http://sentral.com.au)

# WHAT IS CLOUD COMPUTING?

- Simply put, cloud computing is the delivery of computing services – servers, storage, databases, networking, software, analytics and more – over the Internet (the cloud).
- Companies offering these computing services are called cloud providers and typically charge for cloud computing services based on data usage.
- Cloud computing essentially replaces traditional on premise server & storage IT models.



# WHAT IS SaaS?

- Software as a Service (SaaS) is a method for delivering software applications over the Internet, on demand and typically on a subscription / license fee basis.
- With SaaS, cloud providers host & manage the software application and underlying infrastructure, and handle any maintenance, such as software upgrades and security patching.
- Users connect to the application over the Internet, usually with a web browser on their phone, tablet or PC.

## SCHOOL MANAGES & PAYS FOR

### ON PREMISE SERVER

|                       |
|-----------------------|
| APPLICATIONS          |
| SERVER SOFTWARE       |
| SERVER HARDWARE       |
| DATA SECURITY         |
| BACKUPS               |
| STORAGE               |
| NETWORKING            |
| DATABASES             |
| INTEGRATIONS          |
| RUNTIME & PERFORMANCE |

Cloud computing delivers a fundamental change in how your school IT operates. It means that the majority of the infrastructure, work & cost is provided by your partners, not the school itself.

Powered by:



## SENTRAL MANAGES & PAYS FOR

### CLOUD SaaS

|                       |
|-----------------------|
| APPLICATIONS          |
| SERVER SOFTWARE       |
| SERVER HARDWARE       |
| DATA SECURITY         |
| BACKUPS               |
| STORAGE               |
| NETWORKING            |
| DATABASES             |
| INTEGRATIONS          |
| RUNTIME & PERFORMANCE |

# THE 4 KEY REASONS TO MOVE TO THE CLOUD TODAY



- ✓ Reduce IT support requirements
- ✓ Reduce infrastructure
- ✓ Automatic updates
- ✓ Seamless expansion of data requirements

## SIMPLE & FLEXIBLE

- ✓ Lower total cost of ownership for most schools
- ✓ Reduces capital costs in IT infrastructure
- ✓ No data limits
- ✓ Reduce IT support costs

## FAST, ALWAYS ON & ACCESSIBLE

## COST EFFECTIVE

- ✓ 99.9% uptime
- ✓ Staff can easily access anywhere / anytime
- ✓ No risk of outages during peak / critical times
- ✓ High speed at peak times

## DATA IS SAFE & SECURE

- ✓ Complies with all govt privacy requirements
- ✓ Stored in numerous geo-redundant locations
- ✓ Regular data backups & fast restore

## TOTAL COST OF OWNERSHIP [TCO]

The current On Premise Server + Software License Model can have hidden costs for schools when you consider:

- Server Depreciation
- Air Conditioning
- Uninterruptible Power Supply Equipment
- Backups
- Security
- IT Support
- Server Downtime
- Other Hardware

With a SaaS Cloud Model these costs are included in the License Fee – meaning the TCO is usually lower than the On Premise Server + License model

# IMPORTANT QUESTIONS FOR YOUR SCHOOL TO CONSIDER:



- What would you do if your local school server crashed, got damaged or was stolen in the middle of reports season?
- What are the hidden costs of server downtime for teachers and your school?
- What are the upcoming capital and operating costs associated with your current IT infrastructure and resourcing setup?

## THE FUTURE OF SENTRAL IS IN THE CLOUD

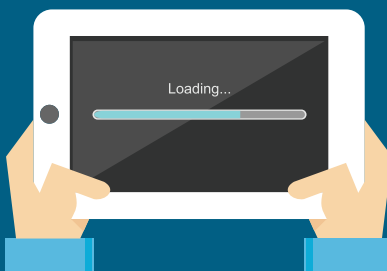
### IMPROVED FUNCTIONALITY

- All base modules are immediately available to your school
- Fast setup of additional purchased modules [eg Insights / Class Builder]
- New UI & UX major refresh and improvements coming soon
- Enterprise level & multi campus functionality
- Faster speeds at peak times



### FASTER & MORE REGULAR UPGRADES

- Upgrades will occur on an ongoing basis, rather than the 'big bang' approach
- Upgrades happen seamlessly in the background
- Reduced bugs & systems issues



### MODULE RELEASES & 3RD PARTY INTEGRATIONS

- New development work on Portal, Timetables, Activities, Daily Organisation, Enrolments and many others
- Continued growth in 3rd Party Integrations from leading software providers
- MS Office365 Integration



## UPGRADE TO SENTRAL IN THE CLOUD TODAY.

Visit [bit.ly/sentralcloud](https://bit.ly/sentralcloud) or call us on 02 9029 3993 to register your interest

Our Smart Backup product means we already have an updated copy of your current data, so the change over is seamless and takes approximately one hour of downtime to complete.