

Cloud Consulting for investment Optimization: 4-Wk Imp.



Would you like to monitor your azure environment on a daily basis? Is it important to keep a compliance management, comparing planned budget with the actual cost?

SGA provides a monitoring tool for azure platform; exclusive dashboards allows fast problem identifications at the environment and tracking other resources usages for a better sizing.

The Solution allows:

- . Management and Monitoring Costs on Azure,
- . Identify potential for investment optimization,
- . Present trimestral reports with best practices regarding security, performance and costs.

Why should you use it:

- Tranquility and Transparency with Azure Services;
- Appoint subtilized compute subtilized resources to reduce cloud consumption;
- Clear vision of an action Plan in cases of critical stops, disasters or related situations;
- Apply recommendations bases on technical and financial criteria.

Governance

- . Day by day management focused on transforming IT team in an innovation catalyzer focused at the business
- . Clear vision of an action Plan in cases of critical stops, disasters or related situations

Billing Management

- . Detect sub-utilized resources to reduce cloud consumption therefore billing value.
- . Monitor public cloud consumption, alerting the client about any changes that might affect the costs for the following months.

Advisor / Report Trimestral

- . Trimestral reports with best practices regarding security, performance and costs.

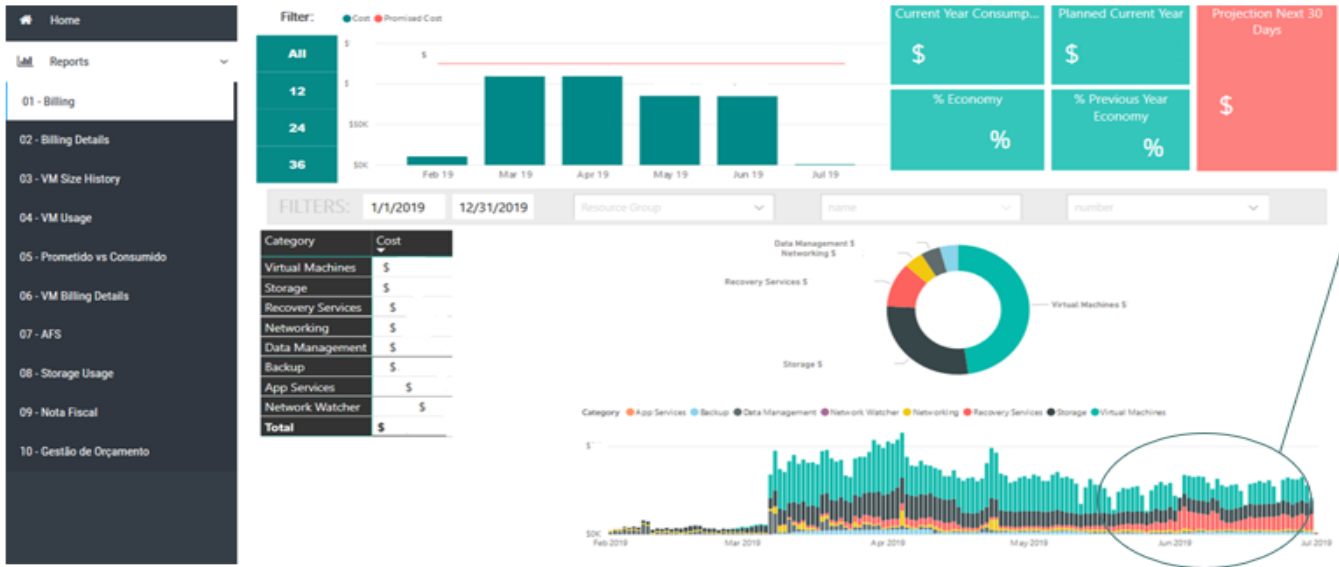
Management

Investment Reduction

Optimization

"We receive the amount of Core's, memory, disc space and verified if what we reserved and allocate for our services it is, indeed, what we operate. We monitored that and follow it through, even because of the own need of the business". - Manuel Landeiro, CIO of Patrus Transportes.

SGA MONITORING for Cloud



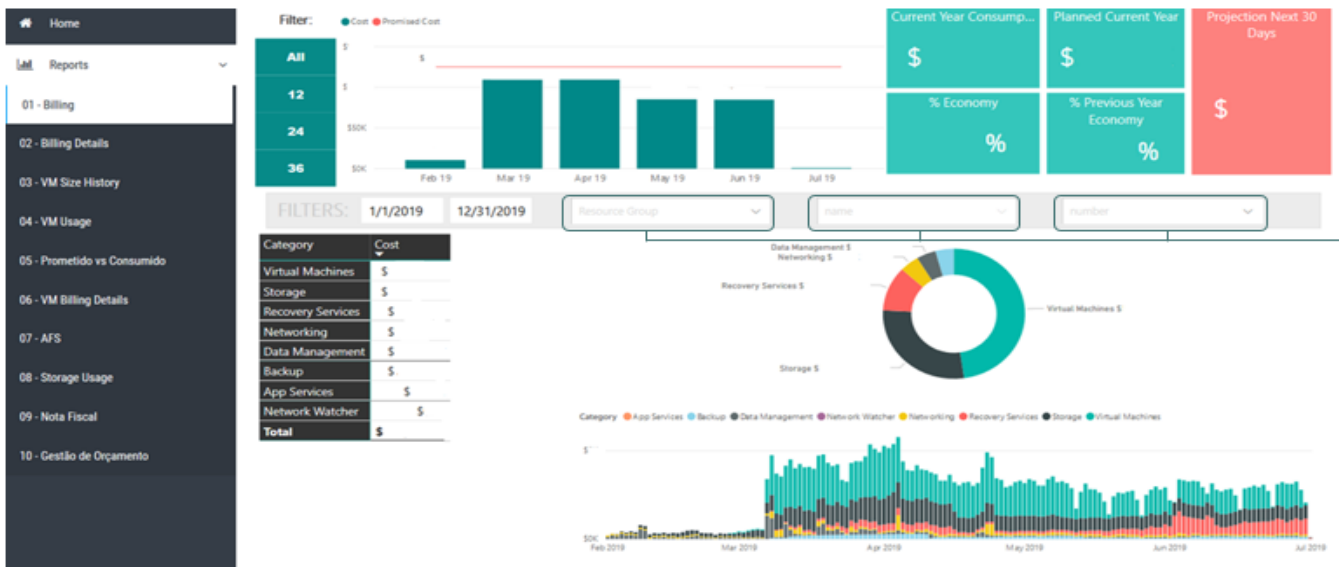
- Usage deviations monitoring
- Alerts based on a daily, weekly and monthly threshold.
- Customer Success and Intelligent Services engagement in case of alerts.
- Deviation analysis and identification of the core reason.
- Client actioning with recommendations and an Action Plan.

The SMFC is the first platform in Brazil that manages cloud 100% focused on Azure.

It displays clearly the current consumption and the planned consumption of the year. Based on its information, the percentage of economy, compared to the previous year percentage.

Furthermore, is the only one that presents the budget available for cloud consumption.

SGA MONITORING for Cloud



- Resources Groups Filters
- Tag Filters
- Invoice Filter

Scope	Deliverables
Monitoring	Budget Management
	Alert Management
	Analysis of daily, weekly and monthly consumption tendencies
	VM usage
	Storage usage

Scope	Deliverables	Coverage
Report	Investment Optimization	Tenant, Subscription, Resource Group and Tag
		VM Sizing
		Reserved Instances
		VM Automation
		Datacenter Location
		AHUB
		Storage
		Network
	Performance	VM
	Licensing Agreement	Licensing usage
	Best Practices	VM
		Storage

Benefits:

- Complete monitoring;
- Plaint sight management;
- Enlargement of efficiency;
- Rapid provisioning;
- Centered management;
- All as a service;
- Intelligent services;
- Tranquility and safety.

Smart cloud as a tool to Digital Transformation of Datacenters

- We act as a business partner , supporting in its process of digital transformation of the enterprise through technology.
- We support the diagnosis realization and provide the strategy to implement a new cloud datacenter, on a scalable process.
- After the implementation, we offer backing on the environment's support for it to maintain itself healthy and available to be used.

Advanced Partner Support - ASFP

The SGA has an advanced support level that only 40 of Microsoft Partners in Brazil have. Also, direct access to senior level Engineers; one of the fastest customer support, with 1, 2 and 4 hours for categorized SLA as A, B e C; Named Services Manager; Roadmap access of the products before market display; Exclusive workshops for the Engineering team of SGA; exclusive partner trainings; Cloud architect to support in projects drawings.