



Shape develops **advanced artificial intelligence solutions** to **enhance your industry**

About Shape

Shape is a company that provides digital products and services for various industrial sectors, belonging to the MODEC and Mitsui groups. Shape's mission is:

Create sustainable business value through the combination of data, technology, and real-world industry experience.

Our solutions

Shape's solutions are unique in the market because they use the latest data-driven approaches (Artificial Intelligence) in conjunction with in-depth knowledge of equipment engineering and maintenance.

Furthermore, Shape's tools are integrated with sensors, equipment and software from any manufacturer, in addition to being designed and tested using data generated by hundreds of equipment in more than 10 FPSOs.

Finally, the operator's experience is always prioritized through a customizable interface that is intuitive to use, which optimizes the delivery of insights into accurate alarms and alerts, facilitating operation and maintenance team's performance.

Shape also has an experienced Customer Experience and Value Assurance team that follows each client's journey, ensuring value generation in the business in all project plans.

Schedule a demo

Contact us at sales@shapedigital.com or open the camera app and point it toward the QR code.

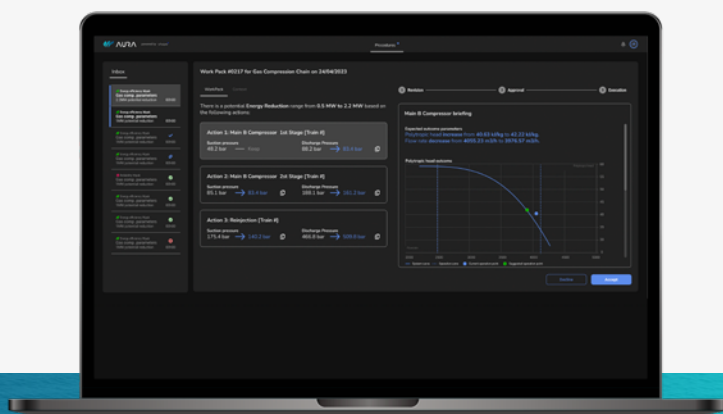




The use of new innovative technologies is a key element in the industry's decarbonization strategy. However, most companies have a portfolio of assets that will continue to operate for decades, and complete modernization is not a viable option - technically or financially.

Shape Aura acts by helping these companies to improve energy efficiency and reduce greenhouse gas emissions by up to 10% through real-time operational optimization recommendations, an approach that requires no CAPEX investments, as it does not require design modifications of these assets.

Shape Aura automates the identification of adjustment opportunities throughout the production process while issuing optimization recommendations directly to the operations team. This automation makes it easier and less costly to keep assets optimized at all times, ensuring a consistent and resilient approach across different assets over time.



How Shape Aura works

The solution was built taking into account operational constraints, aiming to use as little time and attention from the team as possible. It delivers notifications through everyday communication platforms, such as Microsoft Teams and WhatsApp, and structures the recommendations as short and easy-to-understand workpacks.

These workpacks enable a quick assessment, precisely indicating which operational maneuvers the team needs to make (such as adjusting setpoints for a set of equipment) and their expected consequences, making the entire process, from recommendation to execution, extraordinarily user-friendly and efficient.

By combining energy optimization and greenhouse gas emission reduction, Shape Aura can help your operation achieve a high level of operational excellence without modernizing your plant and CAPEX-free.

