



Shape develops **advanced artificial intelligence solutions** to **enhance your industry**

About Shape

Shape is a company that provides digital products and services for various industrial sectors, belonging to the MODEC and Mitsui groups. Shape's mission is:

Create sustainable business value through the combination of data, technology, and real-world industry experience.

Our solutions

Shape's solutions are unique in the market because they use the latest data-driven approaches (Artificial Intelligence) in conjunction with in-depth knowledge of equipment engineering and maintenance.

Furthermore, Shape's tools are integrated with sensors, equipment and software from any manufacturer, in addition to being designed and tested using data generated by hundreds of equipment in more than 10 FPSOs.

Finally, the operator's experience is always prioritized through a customizable interface that is intuitive to use, which optimizes the delivery of insights into accurate alarms and alerts, facilitating operation and maintenance team's performance.

Shape also has an experienced Customer Experience and Value Assurance team that follows each client's journey, ensuring value generation in the business in all project plans.

Schedule a demo

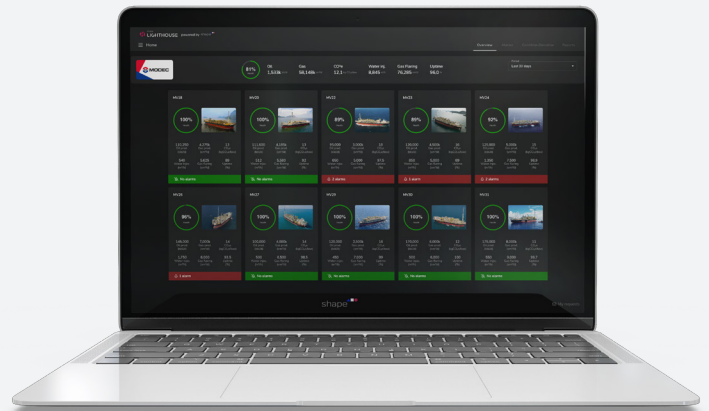
Contact us at sales@shapedigital.com or open the camera app and point it toward the QR code.





Shape Lighthouse is an Intelligent Asset Management platform focused on improving reliability, reducing maintenance costs, increasing production, mitigating risk exposure and reducing GHG emissions.

These gains are possible through the use of two main functionalities. The first is to centralize, organize and contextualize all existing data, classifying equipment and subsystems by their state of health, i.e. you can see all process variables, maintenance notes, offline inspection results, complete alarm history and notes written by staff on a particular equipment page.



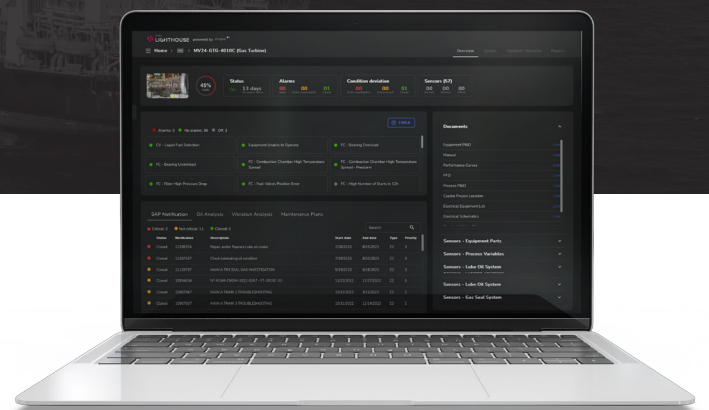
The second is a library of more than 200 pre-built AI-powered models that not only detect events, but are also related to an FMEA analysis tree. In other words, the user is informed about which failure mode or failure causes are associated with a given alarm, and what action is suggested for this scenario.

How Shape Lighthouse can help the oil and gas sector

In the oil and gas sector, Shape Lighthouse can be deployed and generate value for customers at all stages of digital maturity.

It can leverage all existing information through connections with third-party software, equipment and sensors, centralizing information in a single location, while using all this data to run artificial intelligence models.

Shape Lighthouse's track record in this sector speaks for itself. At Shape's clients, this platform has reduced FPSO downtime by 15%, saving more than \$1 million per year per vessel in repair costs, while enabling more than \$100 million in additional oil production.



Learn how the online monitoring journey works



Data + Expertise
= **Models**



Call user
attention



Find **root cause** and
build **action plan**



Control action
plan execution



Execute action
(value generated)