



Shape develops **advanced artificial intelligence solutions** to **enhance your industry**

About Shape

Shape is a company that provides digital products and services for various industrial sectors, belonging to the MODEC and Mitsui groups. Shape's mission is:

Create sustainable business value through the combination of data, technology, and real-world industry experience.

Our solutions

Shape's solutions are unique in the market because they use the latest data-driven approaches (Artificial Intelligence) in conjunction with in-depth knowledge of equipment engineering and maintenance.

Furthermore, Shape's tools are integrated with sensors, equipment and software from any manufacturer, in addition to being designed and tested using data generated by hundreds of equipment in more than 10 FPSOs.

Finally, the operator's experience is always prioritized through a customizable interface that is intuitive to use, which optimizes the delivery of insights into accurate alarms and alerts, facilitating operation and maintenance team's performance.

Shape also has an experienced Customer Experience and Value Assurance team that follows each client's journey, ensuring value generation in the business in all project plans.

Schedule a demo

Contact us at sales@shapedigital.com or open the camera app and point it toward the QR code.



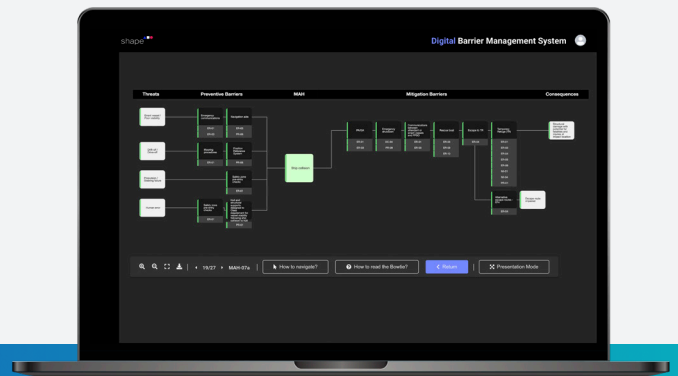


Safety Barriers exist to mitigate risks and operation disasters. However, effectively monitoring barriers' integrity is a challenge without an appropriate tool.

The purpose of Shape Reef is to prevent vessels from operating in high-risk conditions, thus avoiding unplanned downtime, production losses, fines and, above all, disasters.

Shape Reef provides real-time status visualization of each Safety Critical Element (SCE), revealing which components are degraded.

Shape Reef then facilitates the rapid identification of risk sources and even enables operators to initiate a process in order to adjust degraded equipment, maintaining all the necessary risk mitigation.



How Shape Reef works

This is the current structure of Shape Reef, where Work Orders (WO) reflect on the TAGs' health, which together result in the Safety Critical Elements (SCE) health.

If they are degraded, they create a risk of a serious accident occurring.

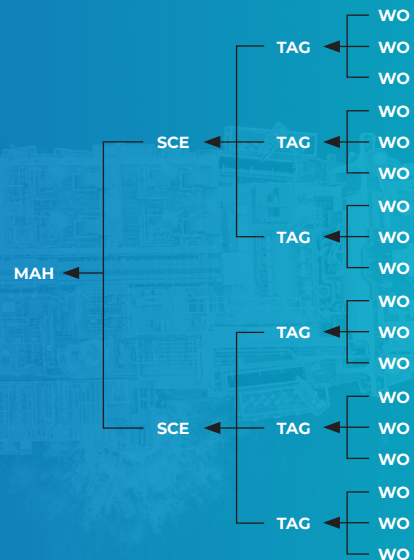
Where:

WO: Work Order

TAG: Component or System

SCE: Safety Critical Elements

MAH: Major Accident Hazards



Classification logic

Shape Reef works with heat map logic to indicate the worst-case scenario. This way, the operator has a clear and quick view of the potential risks.

Where:

Green: Healthy

Yellow: Degraded

Red: Critical

