

Education is one of few sectors that is not disrupted over the decades. Many Institutions realized the significance of the digital transformation lately or thinking about it post pandemic. Unfortunately, the ERP solutions comes as a default solution, which don't address the student's experience or needs in spite of spending millions.

Si6 founders with a decades of ERP & SIS implementation experience for customers across the geographies have identified the need for a simplified and specialized software solution to manage and deliver education with the best of the breed solution, which is compatible with the ERP or digital core solutions, with this approach the Institute can see true "cost of delivery" of education and optimize its back-office.

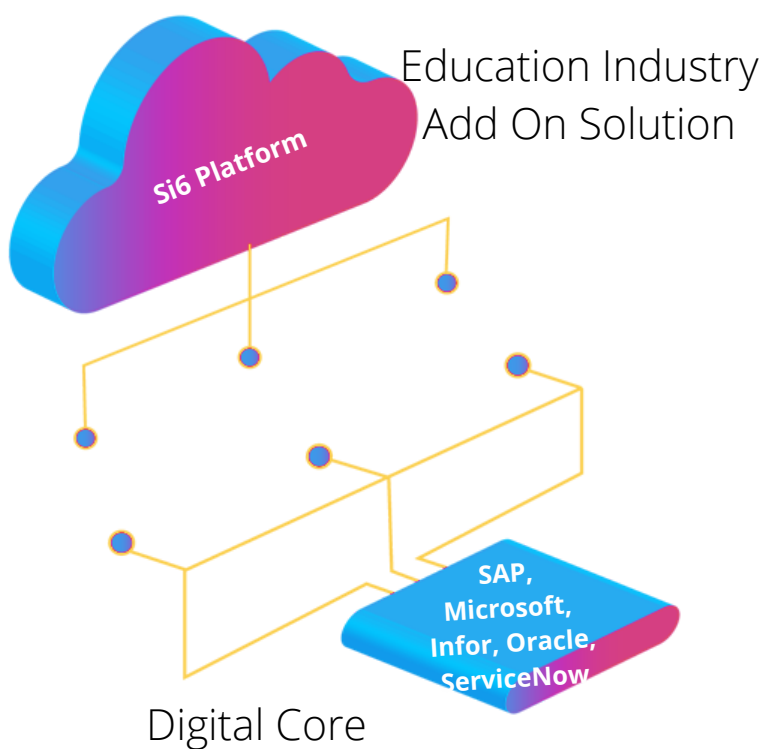
Simply put, Si6 is a next gen cloud based "**Student Information System with Student Accounting Software**", to manage both the academic and financial ledger with pre-integrated to SAP and other ERPs.

Si6 teamed up with a group of senior educational analysts across the globe from various verticals to create an Enterprise Platform for Education. The one and only platform that supports managing all the educational needs of *K-12, Higher Ed, awarding bodies, Skills, Vocational, Further education, training institutions, state and central government Ministries offering regular, MOOC's, be it Open and Distance Educational or regular mode of learning.*

The reality is most institutes are moving towards a desire to adopt industry standard solutions & best practices. But they also need flexibility and agile solutions. Si6 Solution's extensibility framework will allow (without expensive customizations) the Institute to differentiate and provide that unique student experience, as well as help the Institute insure against change, as higher education academic teaching and delivery models evolve.

Si6 Solution will help the Institute Impress its students with a student/parent portal where they can manage all their academic affairs in one place, which is built with responsive design standards geared towards today's tech-savvy mobile user. Can be customized to match the look and feel based on the institutional branding.

The digital assistant technology now offers conversational ways for students and faculty to interact with many common administrative tasks on the go. This ability to significantly upgrade the student experience is a game changer.



## Business Models & Scope

Si6 supports traditional single campus, multi-campus, multi-institution, Open and Distance learning, Online, Retail Short term Programs, Executive Programs, Test Evaluation and Training institutes.

Si6 solution addresses need of local and international Collaborations, Partnerships, Clusters. It has the requisite features for Institutes to become NEP ready.

## Need for this Platform

Education is getting disrupted like never before due to the Shifts in student preferences and policy changes. This has direct impact on the 1. Recruitment, 2. Revenues and 3. Retention and the only way the institutions can overcome these challenges is their Readiness to adopt new business models on demand and to that, institutions need an academic system that offer flexibility to innovate with the best of the breed technologies without disrupting core.

The platform architecture is designed for enterprises in mind and to work seamlessly with the choice of their preferred ERP vendor or the new age digital technology platforms for HR/Finance/Research etc.

**Technology:** We intend to reduce the technology costs per student by at least 50 % thereby making education more affordable and accessible to more students. Hence our stack is built up from ground using FOSS and the best of the 3rd party applications that are widely used by the educational institutions today.

## Benefits

A Cloud based Industry Software Solution that works like an add-On to the leading ERPs in the market

Engage all stakeholders throughout their journey and provide mobile experiences

Reduce costs with true cloud delivery model with your preferred hyperscaler

Si6 comes with CORE, ENROL, STUDY, ASSES, STUDENT ACCOUNTING, LMS and Scheduling Modules

Self-service capabilities for all stakeholders like Applicants, Students, Teachers, Parents, Sponsors, Campus administrators, External Partners and Leaders

Leverage your licenses shelf ware, be it SAP ERP modules or Power BI analytics offered by Microsoft to the educational institutions

## Transformation Features

Standard features like any SIS plus

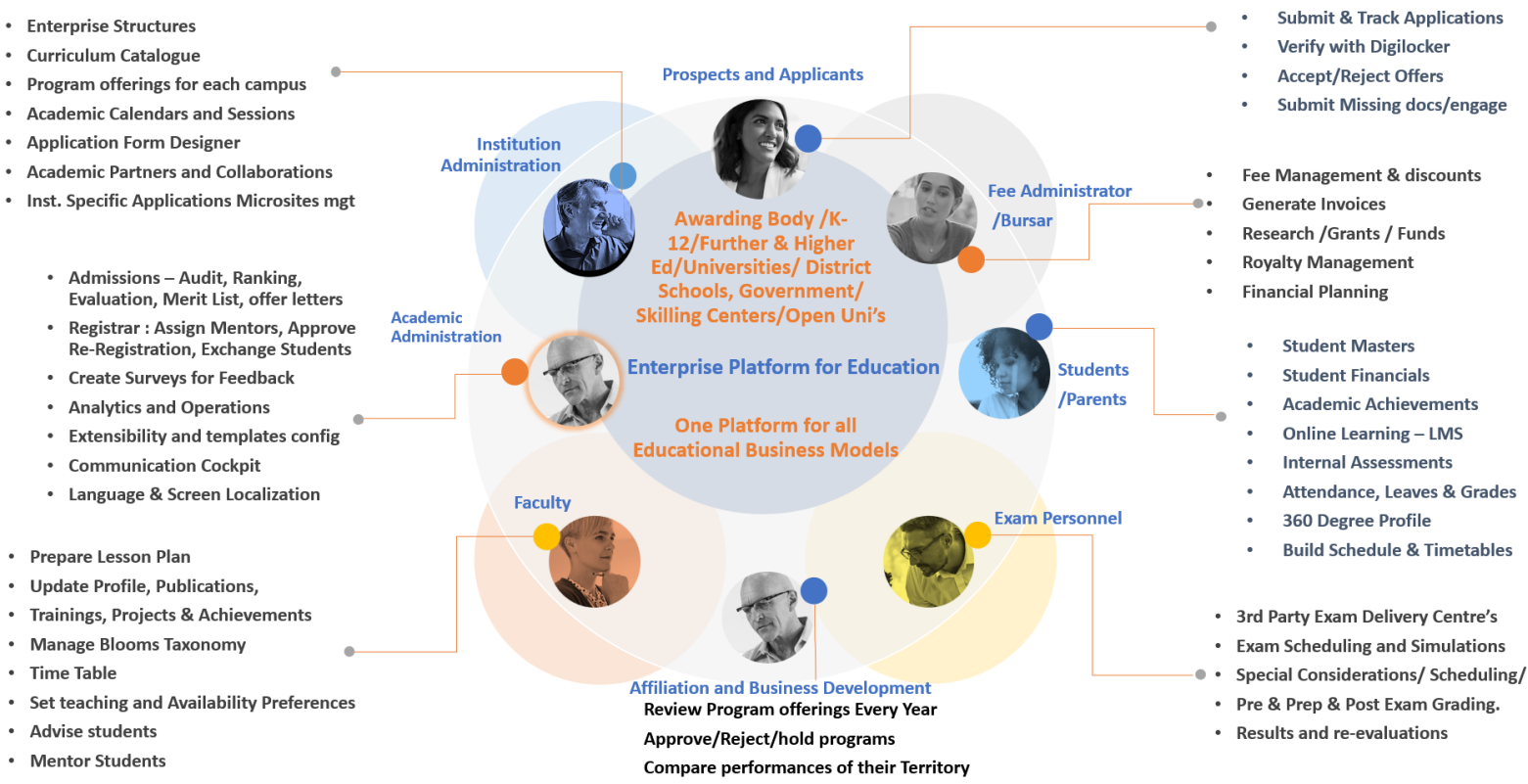
- Unique Student Record for lifetime.
- Multidisciplinary
- Multiple Entry /Exit
- Institute Specific Microsite for course catalogue
- Pre-Integration to MS Teams, Zoom, Google Meet for virtual learning.
- Applicant Portal
- Fee Calculation Engine
- Form Builder
- Rule Engine
- Scheduling Engine for Timetable, exam and Events
- Workflows
- Extensibility
- Personal Branding
- Digilocker Integration's
- GDPR
- Multilingual
- Role Based Authorizations
- Multilingual Support
- Communication Framework
- SMS and Payment Gateways
- Analytics with Numerous KPIS.
- Operational Reports
- Predictive Analytics

**Scope:** Si6 has a vision to offer a Truly educational Industry Platform that covers all functions end to end for all the educational institutions without depending on the numerous third-party applications.

*“New beginnings bring new possibilities. A chance to this time get it right.” – Lynn M. McHale*

**The quote synonyms with Si6 culture, we strongly believe in getting it right for the first time and offer new possibilities for our partners and the enterprise educational customers to innovate and get faster returns on their investment.**

## Solution by Personas



## Roadmap

There are many additional module and features on our roadmap like Hostel Management, Transportation Management, 3rd Party Integrations like RM, Plagiarism, Career, Alumni, Placement and Industry engagement.

## Innovations

New innovations features are released every once in 3 months

**Thank You for your Interest!**

**For demo or partnership details write to us**

INDIA +9 1 9901982818  
UK + 44 7919034600  
info@si6.io



The Profile West, 950 Great West Road, Brentford (West London), England, TW8 9ES

565, Kempaiah Block, Palace Guttahalli, Bangalore, India 560003