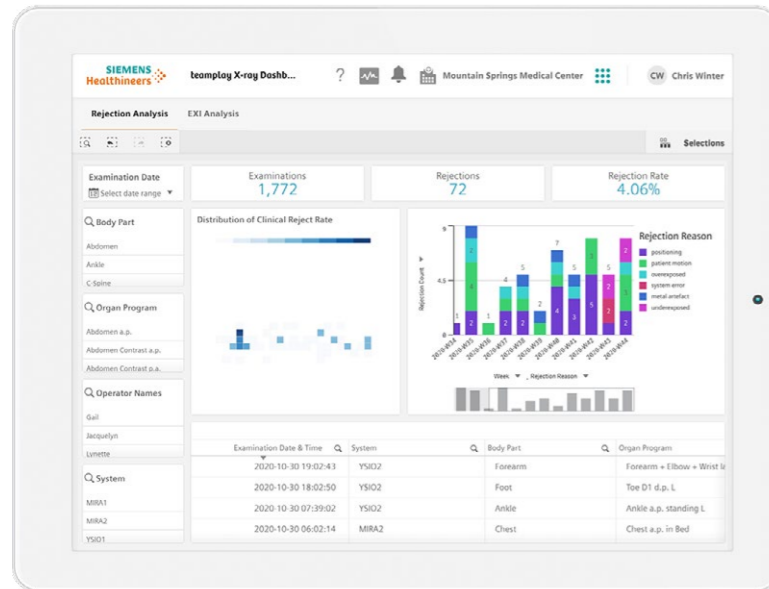


teamplay X-ray Dashboard – Increase quality of imaging through transparency

Get transparency on rejected images as well as imaging variances based on EXI and deviation index values



teamplay applications for performance management¹ in radiology help you to make quick and well-informed decisions by offering a clear overview of your performance data. Monitor quantities like imaging throughput, dose levels, utilization of staff, rooms, and your department's resources down to each device and procedure. Simplify your reporting and gain insights into where workflows need adjustments. Link with other teamwork users and their data for comparable benchmarks and an effortless exchange of images and reports.

Healthcare professionals, hospitals, and institutions come together in teamwork's rich cloud-based network. Access both the metrics from your own imaging fleet and from a shared pool of imaging data. As a community, you connect and collaborate in a trusted environment with high data privacy and security standards to improve patient outcomes and quality of care.

¹ teamwork products are not commercially available in all countries. Due to regulatory reasons their future availability cannot be guaranteed. Please contact your local Siemens Healthineers organization for further details.

² teamwork X-ray Dashboard supports selected Siemens scanners. Please contact your Siemens representative for more details.

³ The statements by Siemens Healthineers' customers described herein are based on results that were achieved in the customer's unique setting. Since there is no "typical" hospital and many variables exist (e.g. hospital size, case mix, level of IT adoption) there can be no guarantee that other customers will achieve the same results.

⁴ With registration, receiver installation and PACS connection, access is granted to teamwork BASIC applications. BASIC applications include basic functionalities of the teamwork performance management applications teamwork Dose, teamwork Usage, teamwork Images and teamwork Fleet.

⁵ The DICOM viewer is not intended for diagnostic display.

⁶ Due to regulations data exchange between data center regions is restricted. The products/features/service offerings are not commercially available in all countries. If the services are not marketed in countries due to regulatory or other reasons, the service offering cannot be guaranteed. Please contact your local Siemens organization for further details.

Main challenge



How do you achieve transparency on image rejection (rejection rate, reasons for rejection, operator) on a departmental level and thus, identify areas which need improvement?

How do you make sure radiation dose is applied correctly and your patients are not exposed to levels of radiation dose that are higher than necessary, whilst still ensuring high quality of X-ray images?

How do you stay compliant with the ever-increasing requirements for exam patient documentation?

Our solution for increased quality in X-ray imaging

teamplay X-ray Dashboard² provides you with a full analysis of rejected images, identification of the root cause of the rejection, and an overview of variances in imaging based on exposure index (EXI) and deviation index (DI) values. For example, based on the number of rejected images, measures can be taken to reduce the number of retakes and therefore the radiation dose across your X-ray department. Reducing the retake rate can also result in higher patient throughput. teamwork X-ray Dashboard also helps you comply with strict guidelines for exam documentation. If you can identify inefficiencies, improvements can be made. More transparency, boosted efficiency.

What teamwork X-ray Dashboard is doing for you:

- Track and document your institution's rejection rate for quality control and regulatory requirements
- Conduct in-depth rejection analysis on various levels, ranging from reject reasons to clinical protocols
- Monitor under- or overexposure of X-ray images with Exposure Index (EXI) and Deviation Index (DI)

Customer voice:



"We save around 6 hours per month on reject analysis and we can now identify the root cause of repeated image rejections much more easily to take further measures to improve our patient's outcomes."³

Martin Poesen, Leading technologist medical imaging, az Vesalius, Belgium

Automatically get access to further teamwork performance management applications⁴:

- **teamplay Dose – Simplify your radiation dose management**
Get easy to use tools to monitor, report, and benchmark radiation dose values for your entire imaging fleet.
- **teamplay Usage – Increase your efficiency and optimize your imaging fleet utilization**
Analyze your imaging fleet utilization and understand how you can increase your productivity.
- **teamplay Images – Share and discuss images in a secured environment**
Access and share imaging studies with peers to discuss relevant cases in a secured environment.^{5,6}
- **teamplay Fleet – Streamline your fleet management**
Streamline your fleet management and optimize your asset performance.